

## 2003 Mazda MX-5 Miata Shinsen

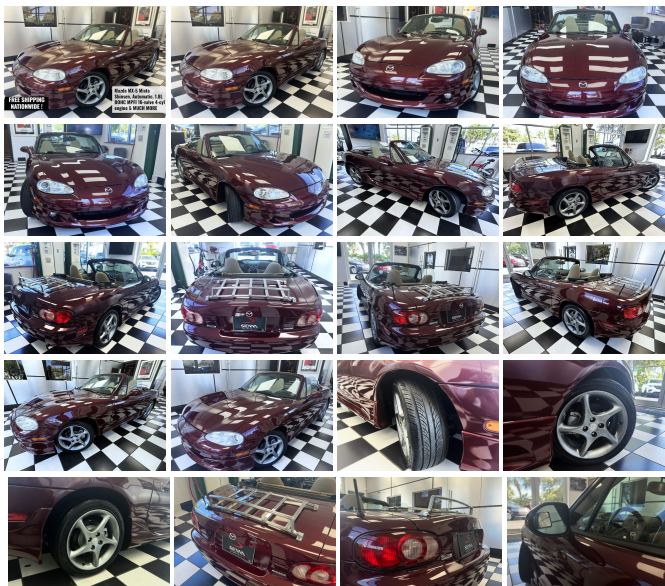
View this car on our website at [siennamotors.com/7198804/ebrochure](http://siennamotors.com/7198804/ebrochure)



Our Price **\$6,900**

### Specifications:

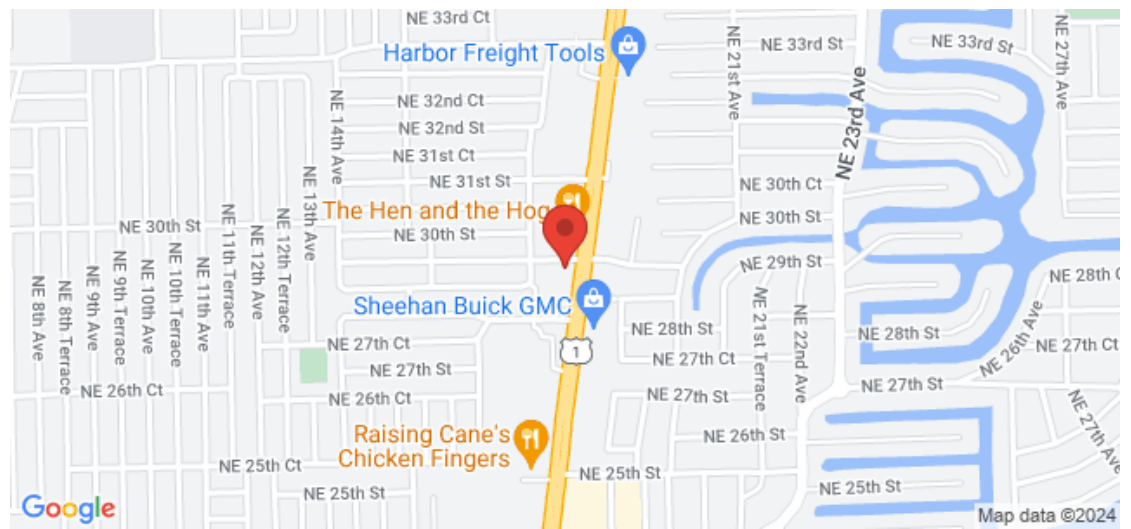
<b>Year:</b>	2003
<b>VIN:</b>	JM1NB353830312494
<b>Make:</b>	Mazda
<b>Model/Trim:</b>	MX-5 Miata Shinsen
<b>Condition:</b>	Pre-Owned
<b>Body:</b>	Convertible
<b>Exterior:</b>	Red
<b>Engine:</b>	1.8L DOHC MPFI 16-valve 4-cyl engine
<b>Interior:</b>	Tan Cloth
<b>Transmission:</b>	Manual w/OD
<b>Mileage:</b>	178
<b>Drivetrain:</b>	Rear Wheel Drive
<b>Economy:</b>	City 23 / Highway 28



2003 Mazda MX-5 Miata Shinsen

Sienna Motors - 954-784-7181 - View this car on our website at [siennamotors.com/7198804/ebrochure](http://siennamotors.com/7198804/ebrochure)

**Our Location :**



2003 Mazda MX-5 Miata Shinsen  
Sienna Motors - 954-784-7181 - View this car on our website at [siennamotors.com/7198804/ebrochure](https://siennamotors.com/7198804/ebrochure)

## Installed Options

### Interior

- AM/FM stereo w/CD player, (2) speakers, door mounted tweeters
- Pwr door locks w/dual stage unlock system- Remote keyless entry w/(2) transmitters
- 12V power outlet- Air conditioning- Cigar lighter/ashtray- Cruise control
- Dark blue cloth upholstery- Dark blue vinyl door inserts- Digital clock- Engine immobilizer
- Faux aluminum trim accents-inc: air vent bezels, door handles, parking brake button, center instrument panel, gear shifter base
- Full center console w/lockable storage/dual cup holders
- Instrumentation-inc: tachometer, digital trip odometer, oil pressure indicator, engine coolant gauge
- Interior lighting-inc: room lamp, cargo area, delayed courtesy dome light
- Locking glove box- Passenger-side seatback pocket- Pwr antenna
- Pwr windows w/driver-side auto down- Rear window defogger
- Reclining high-back bucket seats - Remote releases-inc: fuel door, trunk
- Shinsen version floor mats- Sunvisors w/passenger-side vanity mirror
- Two-tone color-keyed leather-wrapped shift knob
- Warning lamps-inc: parking brake, high-beam, check engine, oil pressure, battery charge, seatbelts, airbags
- White instrument dials w/chrome rings- Windblocker anti-draft panel w/storage pouch

### Exterior

- 2-speed intermittent windshield wipers- Body-color door handles
- Body-color pwr exterior mirrors
- Dark blue cloth manual convertible top w/rear glass window, boot cover - Front fog lights
- Multi-reflector/projector halogen headlights

### Safety

- AM/FM stereo w/CD player, (2) speakers, door mounted tweeters
- Pwr door locks w/dual stage unlock system- Remote keyless entry w/(2) transmitters
- 12V power outlet- Air conditioning- Cigar lighter/ashtray- Cruise control
- Dark blue cloth upholstery- Dark blue vinyl door inserts- Digital clock- Engine immobilizer
- Faux aluminum trim accents-inc: air vent bezels, door handles, parking brake button, center instrument panel, gear shifter base
- Full center console w/lockable storage/dual cup holders
- Instrumentation-inc: tachometer, digital trip odometer, oil pressure indicator, engine coolant gauge
- Interior lighting-inc: room lamp, cargo area, delayed courtesy dome light
- Locking glove box- Passenger-side seatback pocket- Pwr antenna
- Pwr windows w/driver-side auto down- Rear window defogger
- Reclining high-back bucket seats - Remote releases-inc: fuel door, trunk
- Shinsen version floor mats- Sunvisors w/passenger-side vanity mirror
- Two-tone color-keyed leather-wrapped shift knob
- Warning lamps-inc: parking brake, high-beam, check engine, oil pressure, battery charge, seatbelts, airbags
- White instrument dials w/chrome rings- Windblocker anti-draft panel w/storage pouch

### Mechanical

- 1.8L DOHC MPFI 16-valve 4-cyl engine- 12.7 gallon fuel tank
- 16" x 6" alloy wheels w/locks- 5-speed manual transmission w/OD
- Engine-speed-sensing variable pwr rack & pinion steering
- Front/rear independent double-wishbone suspension- Front/rear stabilizer bar
- Limited slip differential- Mini spare wheel/tire- P205/45WR16 high-performance SBR tires
- Pwr front ventilated/rear solid disc brakes- Rear wheel drive- Sport-tuned exhaust system
- Strut tower brace

While great effort is made to ensure the accuracy of the information on our website, errors do occur. All specifications, prices and equipment are subject to change without notice to correct error or omissions. Prices and payments do not include sales tax or other taxes, tag, title, registration fees, government fees, tag agency/electronic filing fee and \$995 dealer service fee are not included in quoted price.

954-784-7181

2891 N Federal Hwy

Pompano Beach, Florida 33064

© 2024 AutoRevo - All rights reserved. - Powered by AutoRevo