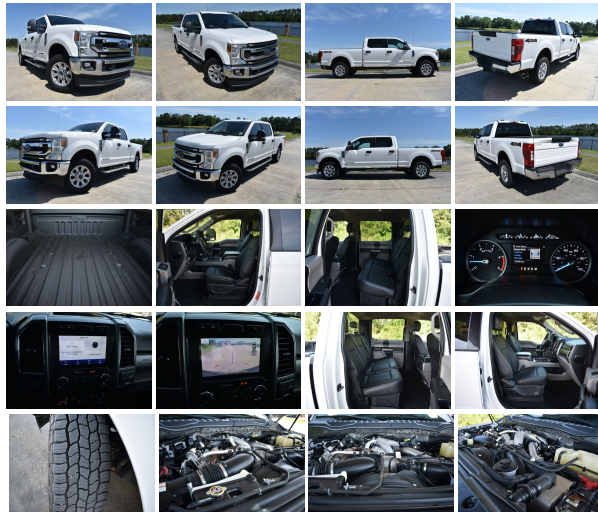


2020 Ford F250SD XLT

View this car on our website at trucksinlouisiana.com/7197531/ebrochure



Our Price **\$34,500**

Retail Value **\$48,975**

Specifications:

Year: 2020
VIN: 1FT7W2BT9LED36575
Make: Ford
Model/Trim: F250SD XLT
Condition: Pre-Owned
Body: Pickup Truck
Exterior: White
Engine: ENGINE: 6.7L 4V OHV POWER STROKE
V8 TURBO DIESEL B20
Interior: Gray
Transmission: Automatic w/OD
Mileage: 179,561
Drivetrain: 4 Wheel Drive

SHOP IT OUT . WE
PRICED IT ALMOST
\$3000 BELOW THE
SAME

COMPARABLE
TRUCKS

LEATHER BUCKET SEATS

FACTORY HITCH MOUNTS

You are looking at a
2020 Ford F-250 Crew Cab
XLT FX4 . It is powered with a

6.7L Powerstroke Diesel V-8 and automatic transmission. It is equipped with tilt, cruise, power drivers seat, power windows, power locks, power mirrors, touchscreen radio, spray in bed liner, factory hitch mounts, and receiver hitch. Also included are the owner's manuals and one keyless remote.

The interior of this truck is in great shape for the mileage. The seats are in good shape. The carpet is in good shape. Everything appears to function properly. It was not smoked in.

The exterior of this truck overall is in great shape. There are no major flaws to speak of, but there maybe a normal flaw associated with the miles, but overall it is nice. If you are a serious buyer please call us and we will give you a thorough walk around to make sure it meets your criteria. The windshield is NEW.

Mechanically this F-250 starts right up and runs smooth. The transmission shifts smooth. The a/c blows ice cold. The front end is tight. The four

wheel drive functions properly. The tires are in good shape.

NADA VALUES

ROUGH TRADE IN
\$40,750

AVERAGE TRADE
IN \$42,675

CLEAN TRADE IN \$44,250

RETAIL
\$48,975

FINANCING: We do not do financing/ in house financing. However, if you have good credit (650 score or higher) we can suggest a lender within the state of Louisiana. If you are outside of Louisiana and have good credit we can also help with locate a lender.

Call any of our sales people to look at this truck!!!

This truck is located @ 13359 Miller Rd. Walker, LA 70785.

Exit I-12 at the Walker Rd.,
Exit #15

If you have any questions about this truck or would like to receive a CarFax, please

call one of our Sales
Representatives @ 225-326-
2639 or 225-445-5381

Visit WWW.TRUCKSINLOUISIANA.C

It is the customer's responsibility to inspect the truck before agreement to purchase. Upon agreement to purchase, there is a \$500 deposit due within 48 hours. The deposit is non refundable unless a major issue was not disclosed by the seller. The remaining balance is due via cash, cashiers check, or bank wire within 5 days. If you need help with shipping call PJ @ All States Auto Transport: 1-866-342-1082, or 1-712-898-5727. There is also a mandatory \$195 Documentation charge.


At our dealership we work very hard to accurately describe our vehicles through text descriptions and elaborate photos. When you purchase a pre-owned vehicle it is not a new vehicle. Any used vehicle can have normal wear and blemishes. Before placing a bid please read the descriptions thoroughly, view

all pictures and call one of our sales representatives for a complete walk a round description of the vehicle. All vehicles are sold as is no warranty.

2020 Ford F250SD XLT

Boardwalk Motorcars LLC - 225-326-2639 - View this car on our website at trucksinlouisiana.com/7197531/ebrochure

Vehicle History Report : as Of 04/27/2024



Snapshot

2020 FORD F-250 SUPER DUTY XLT

✓

No accidents or damage reported to CARFAX

✂

3 Service history records

📄

At least 1 open recall

1


CARFAX 1-Owner vehicle

🚚

Commercial vehicle

00M

179,735 Last reported odometer reading



FREE CARFAX Report

See the full CARFAX Report for additional information

*carfax Snapshot is a reflection of available information on the date the report was pulled. carfax is constantly being updated with new information and is subject to change at any time.

Our Location :



2020 Ford F250SD XLT

Boardwalk Motorcars LLC - 225-326-2639 - View this car on our website at trucksinlouisiana.com/7197531/ebrochure

Installed Options

Interior

- 10-Way Power Driver Seat -inc: Power Recline, Height Adjustment, Fore/Aft Movement, Cushion Tilt and Power 2-Way Lumbar Support
- 10-Way Power Passenger Seat -inc: Power Recline, Height Adjustment, Fore/Aft Movement, Cushion Tilt and Power 2-Way Lumbar Support
- 110V/400W Outlet -inc: 1 in-dash mounted outlet - 2 12V DC Power Outlets
- 2 Seatback Storage Pockets- 3 12V DC Power Outlets
- 4-Way Driver Seat -inc: Manual Recline and Fore/Aft Movement

Option Packages

Factory Installed Packages

ENGINE: 6.7L 4V OHV POWER STROKE V8 TURBO DIESEL B20
\$10,495

Option Packages Total
\$10,495

- 4-Way Passenger Seat -inc: Manual Recline and Fore/Aft Movement
- 60-40 Folding Split-Bench Front Facing Fold-Up Cushion Rear Seat - Analog Appearance
- Cloth 40/20/40 Split Bench Seat -inc: 20% locking center under-seat storage, center armrest, cupholder, storage, 4-way adjustable driver/passenger headrests and driver's side manual lumbar
- Cruise Control w/Steering Wheel Controls- Day-Night Auto-Dimming Rearview Mirror
- Day-Night Rearview Mirror- Delayed Accessory Power- Distance Pacing
- Driver And Passenger Visor Vanity Mirrors
- Driver And Passenger Visor Vanity Mirrors w/Driver And Passenger Illumination
- Driver Seat- FOB Controls -inc: Cargo Access and Remote Engine Start
- Flow-Through Console -inc: 110V/400W outlet in rear - Front Cupholder
- Front Facing Fold-Up Cushion Rear Seat- Front Facing Rear Seat
- Front Leather Seating Surfaces 40/Console/40 -inc: 10-way power driver and passenger seating (includes power lumbar) and 4-way adjustable driver/passenger headrests
- Front Seats w/Leatherette Back Material and Power 2-Way Driver Lumbar
- Full Carpet Floor Covering -inc: Carpet Front And Rear Floor Mats - Full Cloth Headliner
- Full Miko Simulated Suede Headliner- Full Overhead Console w/Storage
- Full Overhead Console w/Storage and 2 12V DC Power Outlets
- Full Overhead Console w/Storage and 3 12V DC Power Outlets
- Full Vinyl/Rubber Floor Covering- Garage Door Transmitter
- Gauges -inc: Speedometer, Odometer, Engine Coolant Temp, Tachometer, Inclinator, Turbo/Supercharger Boost, Transmission Fluid Temp, Engine Hour Meter, Trip Odometer and Trip Computer
- Gauges -inc: Speedometer, Odometer, Oil Pressure, Engine Coolant Temp, Tachometer, Inclinator, Transmission Fluid Temp, Engine Hour Meter, Trip Odometer and Trip Computer
- Gauges -inc: Speedometer, Odometer, Oil Pressure, Engine Coolant Temp, Tachometer, Transmission Fluid Temp, Engine Hour Meter, Trip Odometer and Trip Computer
- HD Vinyl 40/20/40 Split Bench Seat -inc: center armrest, cupholder, storage and driver's side manual lumbar
- Heated Leather Steering Wheel w/Auto Tilt-Away
- Instrument Panel Covered Bin and Dashboard Storage
- Instrument Panel Covered Bin, Dashboard Storage, Driver / Passenger And Rear Door Bins
- Instrument Panel Covered Bin, Dashboard Storage, Driver / Passenger And Rear Door Bins and Locking 2nd Row Underseat Storage
- Integrated Navigation System w/Voice Activation
- Interior Trim -inc: Chrome Interior Accents
- Interior Trim -inc: Metal-Look Instrument Panel Insert and Chrome Interior Accents
- Interior Trim -inc: Metal-Look Instrument Panel Insert, Genuine Wood/Chrome Door Panel Insert and Chrome/Metal-Look Interior Accents
- Interior Trim -inc: Metal-Look Instrument Panel Insert, Genuine Wood/Chrome Door Panel Insert, Chrome/Metal-Look Interior Accents and Leather Upholstered Dashboard
- Interior Trim -inc: Metal-Look Instrument Panel Insert, Simulated Wood/Metal-Look Door Panel Insert and Chrome/Metal-Look Interior Accents
- Keypad- Leather Door Trim Insert- Leather Steering Wheel- Manual 1st Row Windows
- Manual Adjustable Front Head Restraints and Manual Adjustable Rear Head Restraints
- Manual Adjustable Rear Head Restraints- Manual Air Conditioning
- Manual Rear Windows- Manual Tilt/Telescoping Steering Column
- Memory Settings -inc: Door Mirrors, Steering Wheel and Pedals
- Memory Settings -inc: Driver Seat, Door Mirrors, Steering Wheel and Pedals
- Passenger Seat- Passenger Visor Vanity Mirror- Perimeter Alarm
- Power 1st Row Windows w/Driver And Passenger 1-Touch Up/Down
- Power Adjustable Pedals- Power Door Locks- Power Door Locks w/Autolock Feature
- Power Rear Windows- Power Tilt/Telescoping Steering Column
- Proximity Key For Doors And Push Button Start
- Remote Keyless Entry w/Integrated Key Transmitter, Illuminated Entry and Panic Button
- Seats w/Cloth Back Material- Seats w/Leatherette Back Material
- Seats w/Vinyl Back Material- Securilock Anti-Theft Ignition (pats) Immobilizer
- Smart Device Remote Engine Start- Split-Bench Front Facing Rear Seat
- Unique King Ranch Leather 40/Console/40 Front Seats -inc: Kingsville Antique Affect leather seating surfaces, dual integrated cupholders in armrest, 2 outboard head restraints, 10-way power (includes power lumbar), memory, easy-entry/exit driver's seat and heated/ventilated driver and passenger seating
- Unique Limited 2-Tone Leather 40/Console/40 Seats -inc: premium luxury leather, multi-contour, heated/ventilated, 10-way power driver and passenger seats (includes power lumbar), memory, 4-way adjustable driver and passenger headrests
- Unique Platinum Leather 40/Console/40 Seats -inc: multi-contour, heated/ventilated, 10-way power driver and passenger seats (includes power lumbar), memory, 4-way adjustable driver and passenger headrests
- Voice Activated Dual Zone Front Automatic Air Conditioning
- Voice Activated Dual Zone Front Automatic Air Conditioning w/Steering Wheel Controls
- Air Filtration- Engine Compartment And Pickup Cargo Box Lights
- Fade-To-Off Interior Lighting- FordPass Connect 4G Mobile Hotspot Internet Access
- Front And Rear Map Lights- HVAC -inc: Underseat Ducts- Illuminated Locking Glove Box
- Outside Temp Gauge- Rear Cupholder- Systems Monitor- Trip Computer
- Urethane Gear Shifter Material

Exterior

- Aluminum Grille
- Autolamp Auto On/Off Aero-Composite Halogen Auto High-Beam Daytime Running Lights Preference Setting Headlamps w/Delay-Off
- Autolamp Auto On/Off Aero-Composite Halogen Daytime Running Lights Preference Setting Headlamps w/Delay-Off

- Autolamp Auto On/Off Aero-Composite Led Low/High Beam Auto High-Beam Daytime Running Lights Preference Setting Headlamps w/Delay-Off
- Black Door Handles
- Black Front Bumper w/Black Rub Strip/Fascia Accent and 2 Tow Hooks - Black Grille
- Black Grille w/Chrome Accents- Black Manual Side Mirrors w/Manual Folding
- Black Power Heated Side Mirrors w/Convex Spotter, Manual Folding and Turn Signal Indicator
- Black Rear Step Bumper- Body-Colored Door Handles
- Body-Colored Front Bumper w/2 Tow Hooks- Body-Colored Grille w/Chrome Accents
- Body-Colored Power Heated Side Mirrors w/Convex Spotter, Power Folding and Turn Signal Indicator
- Body-Colored Rear Step Bumper- Body-Colored Side Mirrors- Chrome Door Handles
- Chrome Front Bumper w/Body-Colored Rub Strip/Fascia Accent and 2 Tow Hooks
- Chrome Grille
- Chrome Power Heated Side Mirrors w/Convex Spotter, Power Folding and Turn Signal Indicator
- Chrome Rear Step Bumper- Colored Front Bumper w/2 Tow Hooks
- Colored Rear Step Bumper- Deep Tinted Glass
- Express Open/Close Sliding And Tilting Glass 1st And 2nd Row Sunroof w/Power Sunshade
- Fixed Rear Window- Front Fog Lamps- Headlights-Automatic Highbeams
- Illuminated Running Boards- LED Brake Lights- Light Tinted Glass
- Manual Extendable Trailer Style Mirrors- Manual Tailgate/Rear Door Lock
- Perimeter/Approach Lights- Power Extendable Trailer Style Mirrors
- Power Rear Window w/Defroster- Power Running Boards
- PowerScope Trailer Tow Mirrors w/Heat -inc: power-folding w/Autofold, telescoping, power glass, turn signal, high intensity LED security approach lamps and utility lighting system (LED side-mirror spotlights)
- Privacy Glass- Rain Detecting Variable Intermittent Wipers w/Heated Wiper Park
- Retractable Rear Step- Silver Grille
- Tailgate/Rear Door Lock Included w/Power Door Locks
- Tires: LT245/75R17E BSW A/S (4) -inc: Spare may not be the same as road tire
- Tires: LT275/65R18E BSW A/S -inc: Spare may not be the same as road tire
- Tires: LT275/65R20E OWL A/T -inc: Spare may not be the same as road tire
- Variable Intermittent Wipers
- Wheels: 17" Argent Painted Steel -inc: painted hub covers/center ornaments
- Wheels: 18" Bright Machined Cast Aluminum -inc: magnetic painted pockets and bright hub covers/center ornaments
- Wheels: 18" Bright Machined Cast Aluminum -inc: magnetic painted pockets and light caribou wheel ornaments w/King Ranch logo
- Wheels: 18" Sparkle Silver Painted Cast Aluminum -inc: bright hub covers/center ornaments
- Wheels: 20" Polished Aluminum- Wheels: 20" Polished Aluminum -inc: painted pockets
- Aluminum Panels- Black Side Windows Trim and Black Front Windshield Trim
- Cargo Lamp w/High Mount Stop Light- Clearcoat Paint- Front License Plate Bracket
- Regular Box Style- Spare Tire Stored Underbody w/Crankdown- Steel Spare Wheel
- Tailgate Rear Cargo Access

Safety

- 10-Way Power Driver Seat -inc: Power Recline, Height Adjustment, Fore/Aft Movement, Cushion Tilt and Power 2-Way Lumbar Support
- 10-Way Power Passenger Seat -inc: Power Recline, Height Adjustment, Fore/Aft Movement, Cushion Tilt and Power 2-Way Lumbar Support
- 110V/400W Outlet -inc: 1 in-dash mounted outlet - 2 12V DC Power Outlets
- 2 Seatback Storage Pockets- 3 12V DC Power Outlets
- 4-Way Driver Seat -inc: Manual Recline and Fore/Aft Movement
- 4-Way Passenger Seat -inc: Manual Recline and Fore/Aft Movement
- 60-40 Folding Split-Bench Front Facing Fold-Up Cushion Rear Seat - Analog Appearance
- Cloth 40/20/40 Split Bench Seat -inc: 20% locking center under-seat storage, center armrest, cupholder, storage, 4-way adjustable driver/passenger headrests and driver's side manual lumbar
- Cruise Control w/Steering Wheel Controls- Day-Night Auto-Dimming Rearview Mirror
- Day-Night Rearview Mirror- Delayed Accessory Power- Distance Pacing
- Driver And Passenger Visor Vanity Mirrors
- Driver And Passenger Visor Vanity Mirrors w/Driver And Passenger Illumination
- Driver Seat- FOB Controls -inc: Cargo Access and Remote Engine Start
- Flow-Through Console -inc: 110V/400W outlet in rear - Front Cupholder
- Front Facing Fold-Up Cushion Rear Seat- Front Facing Rear Seat
- Front Leather Seating Surfaces 40/Console/40 -inc: 10-way power driver and passenger seating (includes power lumbar) and 4-way adjustable driver/passenger headrests
- Front Seats w/Leatherette Back Material and Power 2-Way Driver Lumbar
- Full Carpet Floor Covering -inc: Carpet Front And Rear Floor Mats - Full Cloth Headliner
- Full Miko Simulated Suede Headliner- Full Overhead Console w/Storage
- Full Overhead Console w/Storage and 2 12V DC Power Outlets
- Full Overhead Console w/Storage and 3 12V DC Power Outlets
- Full Vinyl/Rubber Floor Covering- Garage Door Transmitter
- Gauges -inc: Speedometer, Odometer, Engine Coolant Temp, Tachometer, Inclinator, Turbo/Supercharger Boost, Transmission Fluid Temp, Engine Hour Meter, Trip Odometer and Trip Computer
- Gauges -inc: Speedometer, Odometer, Oil Pressure, Engine Coolant Temp, Tachometer, Inclinator, Transmission Fluid Temp, Engine Hour Meter, Trip Odometer and Trip Computer
- Gauges -inc: Speedometer, Odometer, Oil Pressure, Engine Coolant Temp, Tachometer,

- Transmission Fluid Temp, Engine Hour Meter, Trip Odometer and Trip Computer
- HD Vinyl 40/20/40 Split Bench Seat -inc: center armrest, cupholder, storage and driver's side manual lumbar
- Heated Leather Steering Wheel w/Auto Tilt-Away
- Instrument Panel Covered Bin and Dashboard Storage
- Instrument Panel Covered Bin, Dashboard Storage, Driver / Passenger And Rear Door Bins
- Instrument Panel Covered Bin, Dashboard Storage, Driver / Passenger And Rear Door Bins and Locking 2nd Row Underseat Storage
- Integrated Navigation System w/Voice Activation
- Interior Trim -inc: Chrome Interior Accents
- Interior Trim -inc: Metal-Look Instrument Panel Insert and Chrome Interior Accents
- Interior Trim -inc: Metal-Look Instrument Panel Insert, Genuine Wood/Chrome Door Panel Insert and Chrome/Metal-Look Interior Accents
- Interior Trim -inc: Metal-Look Instrument Panel Insert, Genuine Wood/Chrome Door Panel Insert, Chrome/Metal-Look Interior Accents and Leather Upholstered Dashboard
- Interior Trim -inc: Metal-Look Instrument Panel Insert, Simulated Wood/Metal-Look Door Panel Insert and Chrome/Metal-Look Interior Accents
- Keypad- Leather Door Trim Insert- Leather Steering Wheel- Manual 1st Row Windows
- Manual Adjustable Front Head Restraints and Manual Adjustable Rear Head Restraints
- Manual Adjustable Rear Head Restraints- Manual Air Conditioning
- Manual Rear Windows- Manual Tilt/Telescoping Steering Column
- Memory Settings -inc: Door Mirrors, Steering Wheel and Pedals
- Memory Settings -inc: Driver Seat, Door Mirrors, Steering Wheel and Pedals
- Passenger Seat- Passenger Visor Vanity Mirror- Perimeter Alarm
- Power 1st Row Windows w/Driver And Passenger 1-Touch Up/Down
- Power Adjustable Pedals- Power Door Locks- Power Door Locks w/Autolock Feature
- Power Rear Windows- Power Tilt/Telescoping Steering Column
- Proximity Key For Doors And Push Button Start
- Remote Keyless Entry w/Integrated Key Transmitter, Illuminated Entry and Panic Button
- Seats w/Cloth Back Material- Seats w/Leatherette Back Material
- Seats w/Vinyl Back Material- Securilock Anti-Theft Ignition (pats) Immobilizer
- Smart Device Remote Engine Start- Split-Bench Front Facing Rear Seat
- Unique King Ranch Leather 40/Console/40 Front Seats -inc: Kingsville Antique Affect leather seating surfaces, dual integrated cupholders in armrest, 2 outboard head restraints, 10-way power (includes power lumbar), memory, easy-entry/exit driver's seat and heated/ventilated driver and passenger seating
- Unique Limited 2-Tone Leather 40/Console/40 Seats -inc: premium luxury leather, multi-contour, heated/ventilated, 10-way power driver and passenger seats (includes power lumbar), memory, 4-way adjustable driver and passenger headrests
- Unique Platinum Leather 40/Console/40 Seats -inc: multi-contour, heated/ventilated, 10-way power driver and passenger seats (includes power lumbar), memory, 4-way adjustable driver and passenger headrests
- Voice Activated Dual Zone Front Automatic Air Conditioning
- Voice Activated Dual Zone Front Automatic Air Conditioning w/Steering Wheel Controls
- Air Filtration- Engine Compartment And Pickup Cargo Box Lights
- Fade-To-Off Interior Lighting- FordPass Connect 4G Mobile Hotspot Internet Access
- Front And Rear Map Lights- HVAC -inc: Underseat Ducts- Illuminated Locking Glove Box
- Outside Temp Gauge- Rear Cupholder- Systems Monitor- Trip Computer
- Urethane Gear Shifter Material

Mechanical

- 157 Amp Alternator- 2380# Maximum Payload- 2660# Maximum Payload
- 3.31 Axle Ratio- 3.73 Axle Ratio- 3210# Maximum Payload- 34 Gal. Fuel Tank
- 3470# Maximum Payload- 48 Gal. Fuel Tank
- 72-Amp/Hr 650CCA Maintenance-Free Battery w/Run Down Protection
- 78-Amp/Hr 750CCA Maintenance-Free Battery w/Run Down Protection
- Class V Towing Equipment -inc: Hitch and Trailer Sway Control
- Class V Towing Equipment -inc: Hitch, Brake Controller and Trailer Sway Control
- Dual 157 Amp Alternator- Engine: 6.2L 2-Valve SOHC EFI NA V8 Flex-Fuel
- Engine: 6.7L 4V OHV Power Stroke V8 Turbo Diesel B20 -inc: manual push-button engine-exhaust braking and intelligent oil-life monitor
- HD 200 Amp Alternator- Hydraulic Power-Assist Speed-Sensing Steering
- Hydraulic Power-Assist Steering- Single Stainless Steel Exhaust
- Single Stainless Steel Exhaust w/Chrome Tailpipe Finisher
- Transmission: TorqShift 10-Speed Automatic -inc: SelectShift and selectable drive modes: normal, tow/haul, eco, deep sand/snow and slippery
- Transmission: TorqShift-G 6-Spd Auto w/SelectShift- Upfitter Switches
- 4-Wheel Disc Brakes w/4-Wheel ABS, Front And Rear Vented Discs, Brake Assist and Hill Hold Control
- 50-State Emissions System- Auto Locking Hubs- Electronic Transfer Case
- Firm Suspension- Front Anti-Roll Bar- Front Suspension w/Coil Springs
- GVWR: 10,000 lb Payload Package- HD Shock Absorbers- Part-Time Four-Wheel Drive
- Solid Axle Rear Suspension w/Leaf Springs- Trailer Wiring Harness
- Transmission w/Oil Cooler

225-326-2639

13359 Miller Rd

Walker, LA 70785

© 2024 AutoRevo - All rights reserved. - Powered by AutoRevo