

# 2017 Ford F-150 XLT

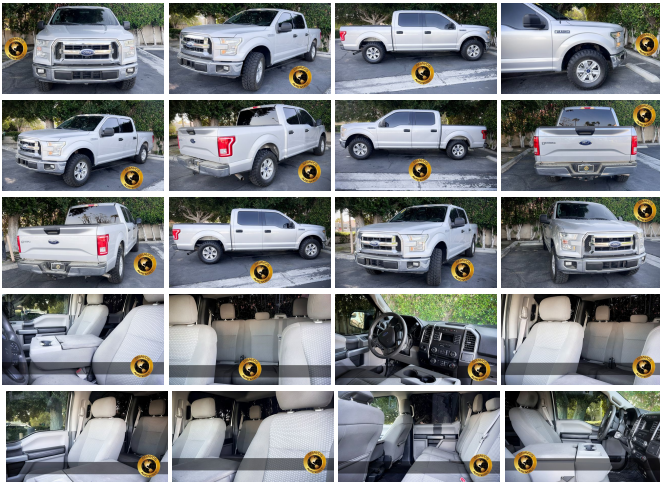
View this car on our website at [bravosautoworld.com/7197372/ebrochure](http://bravosautoworld.com/7197372/ebrochure)



Our Price **\$25,995**

## Specifications:

<b>Year:</b>	2017
<b>VIN:</b>	1FTEW1CG1HKD45234
<b>Make:</b>	Ford
<b>Stock:</b>	D45234-E
<b>Model/Trim:</b>	F-150 XLT
<b>Condition:</b>	Pre-Owned
<b>Body:</b>	Pickup Truck
<b>Exterior:</b>	Ingot Silver Metallic
<b>Engine:</b>	ENGINE: 3.5L V6 ECOBOOST
<b>Interior:</b>	Medium Earth Gray Cloth
<b>Transmission:</b>	Automatic w/OD
<b>Mileage:</b>	89,485
<b>Drivetrain:</b>	Rear Wheel Drive
<b>Economy:</b>	City 17 / Highway 24



2017 Ford F-150 XLT

Bravo's Auto World - (760) 409-7781 - View this car on our website at [bravosautoworld.com/7197372/ebrochure](http://bravosautoworld.com/7197372/ebrochure)

**Our Location :**



2017 Ford F-150 XLT

Bravo's Auto World - (760) 409-7781 - View this car on our website at [bravosautoworld.com/7197372/ebrochure](http://bravosautoworld.com/7197372/ebrochure)

**Installed Options**

**Interior**

- Cloth 40/20/40 Front Seat -inc: 4-way adjustable driver/passenger headrests, manual driver/passenger lumbar and armrest w/storage
- Full Carpet Floor Covering -inc: Carpet Front And Rear Floor Mats
- Power 1st Row Windows w/Driver And Passenger 1-Touch Up/Down
- Power Door Locks w/Autolock Feature- Power Rear Windows
- Remote Keyless Entry w/Integrated Key Transmitter, Illuminated Entry and Panic Button
- 2 Seatback Storage Pockets- 3 12V DC Power Outlets
- 4-Way Driver Seat -inc: Manual Recline and Fore/Aft Movement
- 4-Way Passenger Seat -inc: Manual Recline and Fore/Aft Movement
- 60-40 Folding Split-Bench Front Facing Fold-Up Cushion Rear Seat - Air Filtration
- Analog Appearance- Compass- Cruise Control w/Steering Wheel Controls
- Day-Night Rearview Mirror- Delayed Accessory Power
- Driver And Passenger Visor Vanity Mirrors- Fade-To-Off Interior Lighting
- Front And Rear Map Lights- Front Cupholder- Full Cloth Headliner
- Gauges -inc: Speedometer, Odometer, Voltmeter, Oil Pressure, Engine Coolant Temp, Tachometer, Transmission Fluid Temp and Trip Odometer
- Glove Box- HVAC -inc: Underseat Ducts
- Instrument Panel Bin, Dashboard Storage, Driver / Passenger And Rear Door Bins and 1st Row Underseat Storage
- Interior Trim -inc: Metal-Look Instrument Panel Insert, Cabback Insulator and Chrome Interior Accents
- Keypad- Manual Adjustable Rear Head Restraints- Manual Air Conditioning
- Manual Tilt/Telescoping Steering Column- Outside Temp Gauge- Perimeter Alarm
- Pickup Cargo Box Lights- Rear Cupholder
- Securilock Anti-Theft Ignition (pats) Immobilizer- Urethane Gear Shifter Material

**Exterior**

- Auto On/Off Aero-Composite Halogen Daytime Running Lights Preference Setting Headlamps w/Delay-Off

**Option Packages**

**Factory Installed Packages**

<b>ENGINE: 3.5L V6 ECOBOOST</b>	
-inc: auto start/stop, GVWR: 6,750 lbs Payload Package, 3.15 Axle Ratio	<b>\$2,095</b>
<b>Option Packages Total</b>	<b>\$2,095</b>

- Black Power Side Mirrors w/Convex Spotter and Manual Folding- Deep Tinted Glass
- Full-Size Spare Tire Stored Underbody w/Crankdown
- Tailgate/Rear Door Lock Included w/Power Door Locks- Tires: P245/70R17 BSW A/S
- Wheels: 17" Silver Painted Aluminum- Aluminum Panels- Black Door Handles
- Black Side Windows Trim- Cargo Lamp w/High Mount Stop Light
- Chrome Front Bumper w/Body-Colored Rub Strip/Fascia Accent- Chrome Grille
- Chrome Rear Step Bumper- Clearcoat Paint- Fixed Rear Window- Front Fog Lamps
- Perimeter/Approach Lights- Regular Box Style- Steel Spare Wheel
- Tailgate Rear Cargo Access- Variable Intermittent Wipers

## Safety

- Cloth 40/20/40 Front Seat -inc: 4-way adjustable driver/passenger headrests, manual driver/passenger lumbar and armrest w/storage
- Full Carpet Floor Covering -inc: Carpet Front And Rear Floor Mats
- Power 1st Row Windows w/Driver And Passenger 1-Touch Up/Down
- Power Door Locks w/Autolock Feature- Power Rear Windows
- Remote Keyless Entry w/Integrated Key Transmitter, Illuminated Entry and Panic Button
- 2 Seatback Storage Pockets- 3 12V DC Power Outlets
- 4-Way Driver Seat -inc: Manual Recline and Fore/Aft Movement
- 4-Way Passenger Seat -inc: Manual Recline and Fore/Aft Movement
- 60-40 Folding Split-Bench Front Facing Fold-Up Cushion Rear Seat - Air Filtration
- Analog Appearance- Compass- Cruise Control w/Steering Wheel Controls
- Day-Night Rearview Mirror- Delayed Accessory Power
- Driver And Passenger Visor Vanity Mirrors- Fade-To-Off Interior Lighting
- Front And Rear Map Lights- Front Cupholder- Full Cloth Headliner
- Gauges -inc: Speedometer, Odometer, Voltmeter, Oil Pressure, Engine Coolant Temp, Tachometer, Transmission Fluid Temp and Trip Odometer
- Glove Box- HVAC -inc: Underseat Ducts
- Instrument Panel Bin, Dashboard Storage, Driver / Passenger And Rear Door Bins and 1st Row Underseat Storage
- Interior Trim -inc: Metal-Look Instrument Panel Insert, Cabback Insulator and Chrome Interior Accents
- Keypad- Manual Adjustable Rear Head Restraints- Manual Air Conditioning
- Manual Tilt/Telescoping Steering Column- Outside Temp Gauge- Perimeter Alarm
- Pickup Cargo Box Lights- Rear Cupholder
- Securilock Anti-Theft Ignition (pats) Immobilizer- Urethane Gear Shifter Material

## Mechanical

- Engine: 3.5L V6 Ti-VCT FFV
- Transmission: Electronic 6-Speed Automatic -inc: tow/haul and sport mode
- 1610# Maximum Payload- 200 Amp Alternator- 23 Gal. Fuel Tank- 3.55 Axle Ratio
- 4-Wheel Disc Brakes w/4-Wheel ABS, Front And Rear Vented Discs, Brake Assist, Hill Hold Control and Electric Parking Brake
- 70-Amp/Hr 610CCA Maintenance-Free Battery w/Run Down Protection
- Double Wishbone Front Suspension w/Coil Springs
- Electric Power-Assist Speed-Sensing Steering- Front Anti-Roll Bar
- GVWR: 6,150 lbs Payload Package- HD Shock Absorbers- Rear-Wheel Drive
- Single Stainless Steel Exhaust- Solid Axle Rear Suspension w/Leaf Springs
- Towing Equipment -inc: Trailer Sway Control- Trailer Wiring Harness

Bravo's Auto World

[bravosautoworld.com](http://bravosautoworld.com)

(760) 409-7781

68750 RAMON RD

Cathedral, California 92234

© 2024 AutoRevo - All rights reserved. - Powered by AutoRevo