



2018 Chevrolet Malibu LS

Our Price \$10,500

View this vehicle on our website at jmconnectedauto.com

JM Connected Auto Sales

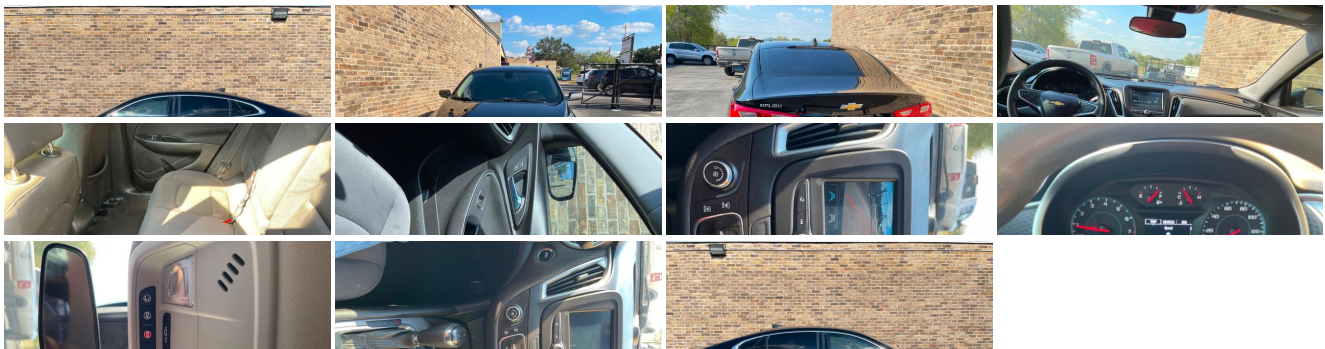
[\(830\) 663-5545](tel:8306635545)

303 E Hondo Ave , Devine, Texas 78016

Photos

Details

Contact



Specifications:

Year:	2018
VIN:	1G1ZB5STXJF120885
Make:	Chevrolet

Stock:	R20885_1
Model/Trim:	Malibu LS
Condition:	Pre-Owned
Body:	Sedan
Exterior:	BLACK
Engine:	ENGINE, 1.5L TURBO DOHC 4-CYLINDER DI
Transmission:	Automatic
Mileage:	138,017
Drivetrain:	Front Wheel Drive
Economy:	City 27 / Highway 36

Vehicle Description

Vehicle History Report : as Of 07/15/2025

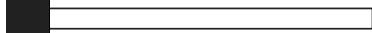


Snapshot

2018 CHEVROLET MALIBU LS



Accident reported: very minor damage



MINOR



MODERATE

SEVERE

20 Service history records



3 Previous owners



Personal vehicle



181,377 Last reported odometer reading



FREE CARFAX Report

See the full CARFAX Report for additional information

*carfax Snapshot is a reflection of available information on the date the report was pulled. carfax is constantly being updated with new information and is subject to change at any time.

Installed Options

Interior

- Seats, front bucket- Floor mats, carpeted front- Floor mats, carpeted rear
- Steering wheel controls, mounted controls for audio, phone and cruise
- Theft-deterrent system, content theft alarm - Remote panic alarm
- Door locks, power programmable
- Passive Entry System includes Remote Keyless Entry, extended range
- Cruise control, electronic with set and resume speed
- Seat adjuster, driver 6-way manual- Seat adjuster, front passenger 6-way manual
- Seat, rear 60/40 split-folding- Armrest, rear center with cupholders
- Map pockets, driver and front passenger seatbacks - Steering wheel, 3-spoke
- Steering column, tilt and telescopic- Warning indicator, front passenger safety belt
- Driver Information Center, monochromatic display
- Windows, power with Express-Down on all- Keyless start- Compass display
- Temperature display, outside- Air conditioning, single-zone manual- Air filter, cabin
- Defogger, rear-window, electric- Power outlet, auxiliary, 12-volt
- Mirror, inside rearview manual day/night
- Visors, driver and front passenger vanity mirrors, covered
- Assist handle, front passenger
- Lighting, interior overhead courtesy lamp, dual reading lamps and illuminated trunk area
- Trunk cargo anchors

Exterior

- Wheels, 16" (40.6 cm) aluminum- Tires, P205/65R16 all-season, blackwall
- Wheel, spare, 16" (40.6 cm) steel- Tire, compact spare, T125/80R16
- Headlamp control, automatic on and off- Headlamps, halogen
- Glass, acoustic, laminated, windshield and front side windows
- Mirrors, outside power-adjustable, manual-folding

Safety

- Seats, front bucket- Floor mats, carpeted front- Floor mats, carpeted rear
- Steering wheel controls, mounted controls for audio, phone and cruise
- Theft-deterrent system, content theft alarm - Remote panic alarm
- Door locks, power programmable
- Passive Entry System includes Remote Keyless Entry, extended range
- Cruise control, electronic with set and resume speed
- Seat adjuster, driver 6-way manual- Seat adjuster, front passenger 6-way manual
- Seat, rear 60/40 split-folding- Armrest, rear center with cupholders
- Map pockets, driver and front passenger seatbacks - Steering wheel, 3-spoke
- Steering column, tilt and telescopic- Warning indicator, front passenger safety belt
- Driver Information Center, monochromatic display
- Windows, power with Express-Down on all- Keyless start- Compass display
- Temperature display, outside- Air conditioning, single-zone manual- Air filter, cabin
- Defogger, rear-window, electric- Power outlet, auxiliary, 12-volt
- Mirror, inside rearview manual day/night
- Visors, driver and front passenger vanity mirrors, covered
- Assist handle, front passenger
- Lighting, interior overhead courtesy lamp, dual reading lamps and illuminated trunk area
- Trunk cargo anchors

Mechanical

- Transmission, 6-speed automatic
- Engine, 1.5L turbo DOHC 4-cylinder DI with Variable Valve Timing (VVT) (160 hp [119.3 kW] @ 5700 rpm, 184 lb-ft torque [248.4 N-m] @ 2500-3000 rpm)
- Engine control, stop-start system- Axle, 3.23 final drive ratio- Front wheel drive
- Suspension, front MacPherson strut- Suspension, rear 4-link, independent
- Brakes, 4-wheel antilock, 4-wheel disc- Brake rotors, Duralife
- Brake lining, high-performance, noise and dust performance- Brake, parking, manual
- Fueling system, capless- Fuel door, push open- Tool kit, road emergency

Option Packages

Factory Installed Packages

ENGINE, 1.5L TURBO DOHC 4-CYLINDER DI
with Variable Valve Timing (VVT) (160 hp [119.3
kW] @ 5700 rpm, 184 lb-ft torque [248.4 N-m] @
2500-3000 rpm)

JM Connected Auto Sales

JM Connected Auto Sales

View this car on our website at jmconnectedauto.com/7194164

Website: jmconnectedauto.com

Phone: (830) 663-5545

Map: [303 E Hondo Ave, Devine, Texas 78016](#)

