

soundautowholesalers.com
(203) 466-2622
139 W Main St
Branford, CT 06405

Sound Auto Wholesalers

2021 Jeep Gladiator Sport S

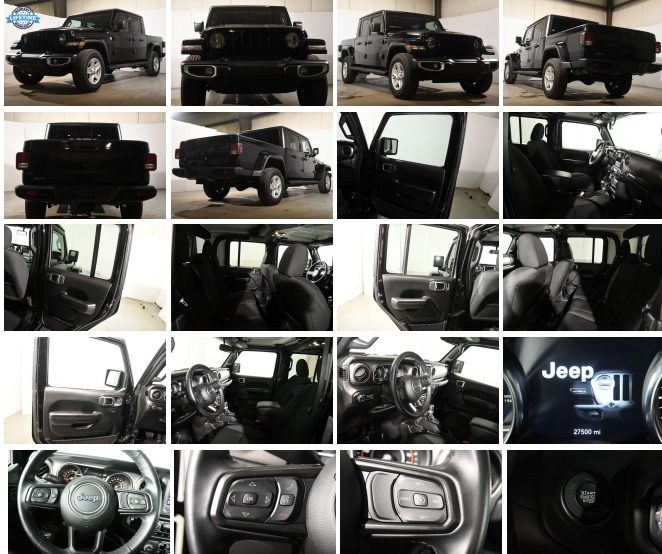
View this car on our website at soundautowholesalers.com/7193884/ebrochure



No-Haggle Price **\$35,995**

Specifications:

Year: 2021
VIN: 1C6HJTAG6ML539005
Make: Jeep
Stock: 5557
Model/Trim: Gladiator Sport S
Condition: Pre-Owned
Body: Pickup Truck
Exterior: Black Clearcoat
Engine: ENGINE: 3.6L V6 24V VVT UPG I W/ESS
Interior: Black Cloth
Transmission: TRANSMISSION: 8-SPEED AUTOMATIC (850RE)
Mileage: 27,492
Drivetrain: 4 Wheel Drive
Economy: City 16 / Highway 22



Are you ready to take your off-road adventures to the next level? Look no further than this 2021 Jeep Gladiator Sport S, with just 27,492 miles on the odometer. This rugged and reliable vehicle is the perfect choice for anyone who wants to explore the great outdoors in style and comfort.

First, let's talk about the exterior. This Jeep Gladiator Sport S comes in a sleek and stylish black color that is sure to turn heads wherever you go. The black 3-piece hard top adds an extra layer of protection from the elements, so you can take on any terrain with confidence. Whether you're cruising down the highway or tackling a rocky trail, this Jeep Gladiator Sport S is sure to impress.

Inside, you'll find a spacious and comfortable cabin with black cloth seats that are designed to keep you comfortable on even the longest drives. The low-back bucket seats provide excellent support, while the black interior adds a touch of sophistication to the overall design.

Under the hood, this Jeep Gladiator Sport S is powered by a powerful 3.6L V6 24V VVT UPG I engine with ESS technology, which delivers impressive performance and fuel efficiency. The 8-speed automatic transmission (850RE) provides smooth and seamless shifting, so you can focus on the road ahead.

But that's not all. This Jeep Gladiator Sport S also comes with a range of manufacturer options and packages that add even more value and convenience to your driving experience. The Convenience Group includes features like power windows and remote keyless entry, while the Technology Group adds advanced safety features like blind-spot monitoring and rear cross-path detection.

And let's not forget about the warranty. Click on the Warranty Tab to see all the details about the warranty that comes with this Jeep Gladiator Sport S, so you can drive with confidence and peace of mind.


Overall, this 2021 Jeep Gladiator Sport S is the perfect choice for anyone who wants a versatile and reliable vehicle that can handle anything life throws their way. With its rugged design, powerful engine, and advanced features, this Jeep Gladiator Sport S is sure to impress. So why wait? Come see it for yourself today and take your off-road adventures to the next level!

Vehicle History Report : as Of 09/24/2023



Snapshot


2021 JEEP GLADIATOR SPORT S


 No accidents or damage reported to CARFAX

 **8** Service history records

 **1** CARFAX 1-Owner vehicle

 Commercial vehicle

 Last owned in Ohio

 **28,286** Last reported odometer reading



FREE CARFAX Report

See the full CARFAX Report for additional information

*carfax Snapshot is a reflection of available information on the date the report was pulled. carfax is constantly being updated with new information and is subject to change at any time.

Our Location :



Installed Options

Interior

- 110 mph Vehicle Max Speed Calibration- 2 12V DC Power Outlets
- 2 Seatback Storage Pockets
- 4-Way Passenger Seat -inc: Manual Recline and Fore/Aft Movement
- 6-Way Driver Seat -inc: Manual Recline, Height Adjustment, Fore/Aft Movement and Manual Lumbar Support
- 60-40 Folding Split-Bench Front Facing Fold Forward Seatback Cloth Rear Seat
- Air Filtration- Analog Appearance- Cloth Low-Back Bucket Seats- Compass
- Cruise Control w/Steering Wheel Controls- Day-Night Rearview Mirror
- Delayed Accessory Power- Fade-To-Off Interior Lighting- Front And Rear Map Lights
- Front Center Armrest w/Storage
- Front Seats w/Cloth Back Material and Manual Driver Lumbar
- Full Carpet Floor Covering -inc: Carpet Front And Rear Floor Mats
- Full Floor Console w/Locking Storage and 2 12V DC Power Outlets
- Gauges -inc: Speedometer, Odometer, Engine Coolant Temp, Tachometer, Engine Hour Meter, Trip Odometer and Trip Computer

Option Packages

Factory Installed Packages

["TECHNOLOGY GROUP", "-inc: Google Android Auto, SiriusXM Satellite Radio, SiriusXM Radio Service, For More Info, Call 800-643-2112, GPS Antenna Input, USB Host Flip, Cluster 7.0" TFT Color Display, Integrated Center Stack Radio, 7.0" Touch Screen Display, Air Conditioning w/Auto Temp Control, Integrated Voice Command w/Bluetooth, Apple CarPlay"]

\$995

Option Packages Total

\$995

- HVAC -inc: Console Ducts- Illuminated Front Cupholder- Illuminated Rear Cupholder
- Instrument Panel Bin, Dashboard Storage, Driver / Passenger And Rear Door Bins
- Interior Trim -inc: Metal-Look Instrument Panel Insert and Metal-Look Console Insert
- Locking Glove Box
- Manual Adjustable Front Head Restraints and Foldable Rear Head Restraints
- Manual Air Conditioning- Manual Tilt/Telescoping Steering Column
- Outside Temp Gauge- Proximity Key For Push Button Start Only
- Redundant Digital Speedometer- Sentry Key Immobilizer- Systems Monitor
- Trip Computer- Urethane Gear Shifter Material
- Vanity w/Driver And Passenger Auxiliary Mirror

Exterior

- Aero-Composite Halogen Headlamps w/Delay-Off- Black Door Handles
- Black Front Bumper w/2 Tow Hooks- Black Rear Bumper w/1 Tow Hook
- Black Side Windows Trim- Body-Colored Grille- Clearcoat Paint
- Deep Tint Sunscreen Windows- Front Fog Lamps
- Full-Size Spare Tire Stored Underbody w/Crankdown- Galvanized Steel/Aluminum Panels
- Manual Convertible Top w/Fixed Roll-Over Protection- Regular Box Style
- Removable Rear Window- Steel Spare Wheel- Tailgate Rear Cargo Access
- Tires: 245/75R17 H/T- Variable Intermittent Wipers
- Wheels: 17" x 7.5" Black Steel Styled

Safety

- 110 mph Vehicle Max Speed Calibration- 2 12V DC Power Outlets
- 2 Seatback Storage Pockets
- 4-Way Passenger Seat -inc: Manual Recline and Fore/Aft Movement
- 6-Way Driver Seat -inc: Manual Recline, Height Adjustment, Fore/Aft Movement and Manual Lumbar Support
- 60-40 Folding Split-Bench Front Facing Fold Forward Seatback Cloth Rear Seat
- Air Filtration- Analog Appearance- Cloth Low-Back Bucket Seats- Compass
- Cruise Control w/Steering Wheel Controls- Day-Night Rearview Mirror
- Delayed Accessory Power- Fade-To-Off Interior Lighting- Front And Rear Map Lights
- Front Center Armrest w/Storage
- Front Seats w/Cloth Back Material and Manual Driver Lumbar
- Full Carpet Floor Covering -inc: Carpet Front And Rear Floor Mats
- Full Floor Console w/Locking Storage and 2 12V DC Power Outlets
- Gauges -inc: Speedometer, Odometer, Engine Coolant Temp, Tachometer, Engine Hour Meter, Trip Odometer and Trip Computer
- HVAC -inc: Console Ducts- Illuminated Front Cupholder- Illuminated Rear Cupholder
- Instrument Panel Bin, Dashboard Storage, Driver / Passenger And Rear Door Bins
- Interior Trim -inc: Metal-Look Instrument Panel Insert and Metal-Look Console Insert
- Locking Glove Box
- Manual Adjustable Front Head Restraints and Foldable Rear Head Restraints
- Manual Air Conditioning- Manual Tilt/Telescoping Steering Column
- Outside Temp Gauge- Proximity Key For Push Button Start Only
- Redundant Digital Speedometer- Sentry Key Immobilizer- Systems Monitor
- Trip Computer- Urethane Gear Shifter Material
- Vanity w/Driver And Passenger Auxiliary Mirror

Mechanical

- 1700# Maximum Payload- 180 Amp Alternator- 22 Gal. Fuel Tank- 3 Skid Plates
- 3.73 Rear Axle Ratio- 50 State Emissions
- 650CCA Maintenance-Free Battery w/Run Down Protection
- Anti-Lock 4-Wheel Disc Heavy Duty Brakes- Auto Locking Hubs
- Brake Actuated Limited Slip Differential
- Brakes w/Front And Rear Vented Discs, Brake Assist and Hill Hold Control
- Class II Towing Equipment -inc: Hitch and Trailer Sway Control
- Electro-Hydraulic Power Assist Steering- Engine Auto Stop-Start Feature
- Engine Oil Cooler- Engine: 3.6L V6 24V VVT UPG I w/ESS
- Front And Rear Anti-Roll Bars- GVWR: 5,800 lbs- HD Shock Absorbers
- Leading Link Front Suspension w/Coil Springs- Manual Transfer Case
- Normal Duty Plus Suspension- Part-Time Four-Wheel Drive
- Single Stainless Steel Exhaust- Solid Axle Rear Suspension w/Coil Springs
- Trailer Wiring Harness- Transmission: 6-Speed Manual

Prices do not include sales tax, registration fees and dealer conveyance fee of 799. If you have a trade-in your sales tax will be reduced based on the difference between the car you are purchasing and your trade-in. Final credit decisions are made by lenders. The advertised price is the price for this vehicle in its current condition. Any alterations, upgrades, installations, cosmetic work, or any other additions requested by the customer would incur an additional cost, to be added to the selling price of the vehicle. The price does not

include sales tax, vehicle registration charges, cost of additional requests by the customer, finance charges, processing charges, or any other charges required by law. The dealer reserves the right to pass all vehicles through Connecticut State inspection prior to delivery. The dealer attempts to update this inventory on a regular basis, however, there can be a delay between the sale of a vehicle and the update of the dealer's online inventory. Advertised price does not include sales tax, vehicle registration charges, cost of additional requests by the customer, finance charges, processing charges, or any other charges required by law. Vehicles are sold cosmetically as is and equipped as is. Costs incurred by Sound Auto Wholesalers as a result of customer requests are not included in advertised prices. Customer must present a signed copy of this ad at the time of purchase. Online pricing excludes all prior offers, and may not be combined with any other offers, coupons, or discounts. Vehicle options and pricing are subject to change. Special price includes all dealer rebates and incentives. Finance promotions based on tier 1 credit approval after 20% down payment. All online prices expire at 12:01 PM today. Sound Auto Wholesalers will honor expired advertised prices up to 24 hours after expiration, provided the customer presents a signed, printed copy of the advertised price at the start of their visit. We make every effort to adequately represent the condition and features of all our inventory including vehicle information, pictures, pricing, and status but there may be inaccuracies. Sound Auto Wholesalers assumes no responsibility for inaccuracies in online information nor is it responsible for errors in any third-party advertisements. Please confirm any questions or concerns by contacting Sound Auto Wholesalers directly. EPA mileage estimates are based on model year EPA mileage ratings and are for comparison purposes only. Your actual mileage will vary depending on how you drive and maintain your vehicle. Before purchasing this vehicle, it is solely the customer's responsibility to address any and all differences between the information on this website and the actual vehicle specifications and/or warranties offered prior to the sale of this vehicle. Vehicle data on this website is compiled from publicly available sources believed by the publisher to be reliable. Vehicle data is subject to change without notice. The publisher assumes no responsibility for errors and/or omissions in this data and its compilation, and makes no representations expressed or implied to any actual or prospective purchaser of the vehicle as to the condition of the vehicle, vehicle specifications, ownership, vehicle history, equipment/accessories, price, or warranties.

Sound Auto Wholesalers
soundautowholesalers.com
(203) 466-2622
139 W Main St
Branford, CT 06405

© 2023 AutoRevo - All rights reserved. - Powered by AutoRevo