

## 2002 Mercedes-Benz E320 4-Matic

View this car on our website at [carbuffs.com/7192405/ebrochure](http://carbuffs.com/7192405/ebrochure)



Our Price **\$0**

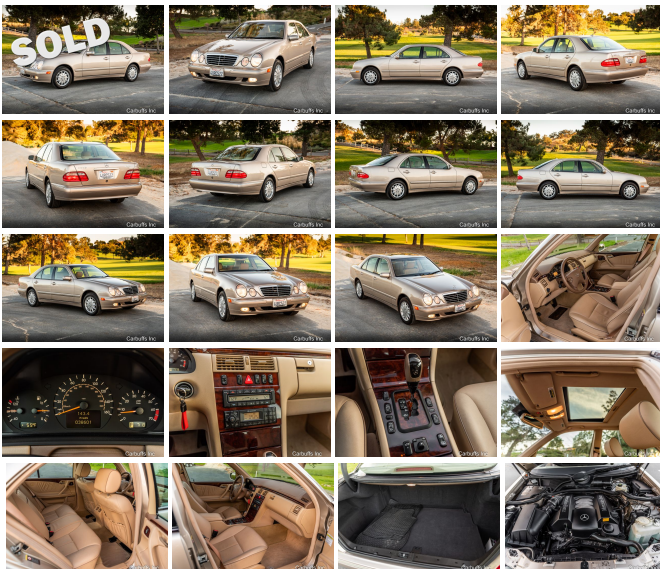
### Specifications:

<b>Year:</b>	2002
<b>VIN:</b>	WDBJF82J92X063565
<b>Make:</b>	Mercedes-Benz
<b>Model/Trim:</b>	E320 4-Matic
<b>Condition:</b>	Pre-Owned
<b>Body:</b>	Sedan
<b>Exterior:</b>	Desert Silver Metallic
<b>Engine:</b>	3.2L SOHC SMPI 18-valve aluminum-alloy V6 engine
<b>Interior:</b>	Java Leather
<b>Transmission:</b>	Automatic w/OD
<b>Mileage:</b>	38,600
<b>Drivetrain:</b>	All Wheel Drive
<b>Economy:</b>	City 20 / Highway 27

One family owned with only 38k miles!

Description from the owner:

*"This 2002 Mercedes E320 sedan has remained with the same family since new. The car is finished in metallic Desert Silver over java leather and it is powered by a 3.2-liter V6 with a five-speed automatic transmission and 4-Matic all-wheel drive system. Always garaged and in super clean condition, the equipment includes a glass sunroof, dual-zone automatic climate control, heated front seats, a rear retractable sunshade, and a factory stereo with weather band and cassette tape. Work in preparation for sale included a Service B, new rear main seal, new oil level sending unit, rebuilt digital instrument display, new windshield wiper, engine oil,*



*transmission fluid and rear end fluid changes. In addition the valve cover gaskets were changed and cooling system was flushed and renewed. Climate control system was serviced and a new Mercedes heater fan motor installed. This W210 sedan has just 38k miles and is offered with manufacturer's literature, service invoices, a clean Carfax report, and a clean California title.*

*The cabin features power-adjustable and heated front seats trimmed in java leather along a color-coordinated dashboard, steering wheel, carpeting, and door panel inserts. Wood trim accents the interior and appointments include dual-zone automatic climate control, front seat memory settings, beige floor mats and Mercedes all-weather black rubber floor mats, and factory cassette stereo."*

**Our Location :**



2002 Mercedes-Benz E320 4-Matic  
 Carbuffs - (925) 671-2010 - View this car on our website at [carbuffs.com/7192405/ebrochure](http://carbuffs.com/7192405/ebrochure)

**Installed Options**

**Interior**

- 10-way pwr front bucket seats w/head restraints
- 3 position memory for driver/front passenger seats/steering column/mirrors/ headrests
- 8-speaker sound system- Anti-theft alarm system- Auto dimming rearview mirror
- Automatic dual-zone climate control-inc: air/dust filters, sun/smog sensors, engine heat recirculation feature (REST)
- Center console-inc: front armrest w/upper & climate controlled lower storage
- Compact disc/cellular telephone pre-wiring- Cruise control
- Dual front/rear retractable cup holders
- Dual-mode Smartkey system-inc: remote window opening, trunk opener w/valet lockout, doors/trunk/filler cap unlocking & key copy protection
- Electrically heated rear window- Entrance lamps
- Fiber-optic AM/FM/weather band stereo radio w/concealed auto-reverse cassette -inc: seek/scan, multifunction keypad, 4 in 1 control soft keys, CD changer/ phone controls, anti-theft coding, speed compensated volume
- Fold-down second seat armrest w/dual slide-out cup holders
- Front courtesy lights w/delay shutoff- Front passenger reading lamp
- Genuine burl walnut trim
- Instrumentation-inc: speedometer, odometer, trip odometer, tachometer, fuel/ temp gauges, outside temp display, quartz clock
- Leather interior-inc: seating surfaces, door trim inserts, head restraints, front seat backs, & map pockets
- Leather-covered steering wheel/shift knob- Pwr door locks
- Pwr tilt/telescoping steering column- Pwr windows w/express down/up
- Rear courtesy light- Universal garage door opener- Velour floor carpeting/mats
- Warning lights-inc: seat belt, key-in-ignition, headlamps on, brake, ABS, Brake Assist, parking brake on, airbag, traction control, exterior lamp failure, low fuel/oil/coolant/washer fluid, check engine

**Exterior**

- Auto dimming driver mirror

**Option Packages**

**Factory Installed Packages**

METALLIC PAINT	\$640
<b>Option Packages Total</b>	<b>\$640</b>

- Dual heated pwr remote outside rearview mirrors w/RH mirror reverse tilt down
- Front halogen fog lamps- Halogen headlamps
- Intermittent single-arm windshield wiper/heated washer system- Single red rear fog lamp
- Wraparound taillamps

---

## Safety

- 10-way pwr front bucket seats w/head restraints
- 3 position memory for driver/front passenger seats/steering column/mirrors/ headrests
- 8-speaker sound system- Anti-theft alarm system- Auto dimming rearview mirror
- Automatic dual-zone climate control-inc: air/dust filters, sun/smog sensors, engine heat recirculation feature (REST)
- Center console-inc: front armrest w/upper & climate controlled lower storage
- Compact disc/cellular telephone pre-wiring- Cruise control
- Dual front/rear retractable cup holders
- Dual-mode Smartkey system-inc: remote window opening, trunk opener w/valet lockout, doors/trunk/filler cap unlocking & key copy protection
- Electrically heated rear window- Entrance lamps
- Fiber-optic AM/FM/weather band stereo radio w/concealed auto-reverse cassette -inc: seek/scan, multifunction keypad, 4 in 1 control soft keys, CD changer/ phone controls, anti-theft coding, speed compensated volume
- Fold-down second seat armrest w/dual slide-out cup holders
- Front courtesy lights w/delay shutoff- Front passenger reading lamp
- Genuine burl walnut trim
- Instrumentation-inc: speedometer, odometer, trip odometer, tachometer, fuel/ temp gauges, outside temp display, quartz clock
- Leather interior-inc: seating surfaces, door trim inserts, head restraints, front seat backs, & map pockets
- Leather-covered steering wheel/shift knob- Pwr door locks
- Pwr tilt/telescoping steering column- Pwr windows w/express down/up
- Rear courtesy light- Universal garage door opener- Velour floor carpeting/mats
- Warning lights-inc: seat belt, key-in-ignition, headlamps on, brake, ABS, Brake Assist, parking brake on, airbag, traction control, exterior lamp failure, low fuel/oil/coolant/washer fluid, check engine

---

## Mechanical

- 16" X 7.5" aluminum wheels- 215/55HR16 all season SBR tires
- 3.2L SOHC SMPI 18-valve aluminum-alloy V6 engine
- 4-wheel pwr disc brakes (front vented)
- 5-speed automatic transmission-inc: "winter" mode, adaptive controls, OD - All wheel drive
- Anti-lock brake system (ABS)- Automatic slip control (ASR)
- Brake assist system (applies full braking pwr automatically when needed)
- Dual path intake manifold- Electronic Stability Program (ESP)
- Front/rear stabilizer bar, gas-pressurized shock absorbers, coil springs
- Independent double wishbone front suspension w/triangular lower control arms, anti-dive geometry
- Independent five-link rear suspension-inc: anti-lift/anti-squat geometry, alignment control
- Speed sensitive pwr rack & pinion steering

---

Carbuffs

[carbuffs.com](http://carbuffs.com)

(925) 671-2010

2281-A Via De Mercados

Concord, CA 94520

© 2024 AutoRevo - All rights reserved. - Powered by AutoRevo