

2020 Jeep Wrangler Unlimited Sport

View this car on our website at fast.autorevo-websites.com/7191150/ebrochure



Our Price **\$42,000**

Specifications:

Year:	2020
VIN:	1C4HJXDN4LW182088
Make:	Jeep
Stock:	LW182088M
Model/Trim:	Wrangler Unlimited Sport
Condition:	Pre-Owned
Body:	SUV
Exterior:	Black Clearcoat
Engine:	ENGINE: 2.0L I4 DOHC DI TURBO W/ESS
Interior:	Black Cloth
Transmission:	Automatic w/OD
Mileage:	24,241
Drivetrain:	4 Wheel Drive
Economy:	City 17 / Highway 22

- Low mileage 2020 Jeep Wrangler Unlimited Sport in sleek black with black cloth interior
- Equipped with a powerful 2.0L I4 DOHC DI TURBO W/ESS engine and automatic transmission
- No accidents or damage reported, but sold AS-IS with no warranty
- Perfect for off-roading adventures with impressive traction and maneuverability
- Includes modern features like touchscreen display and Bluetooth connectivity

Get ready to take on any terrain with this 2020 Jeep Wrangler Unlimited Sport. With only 24241 miles on the odometer, this vehicle is practically brand new and ready for all of your off-roading adventures. The black exterior paired with black cloth interior gives this Jeep a sleek and modern look that will turn heads wherever you go.

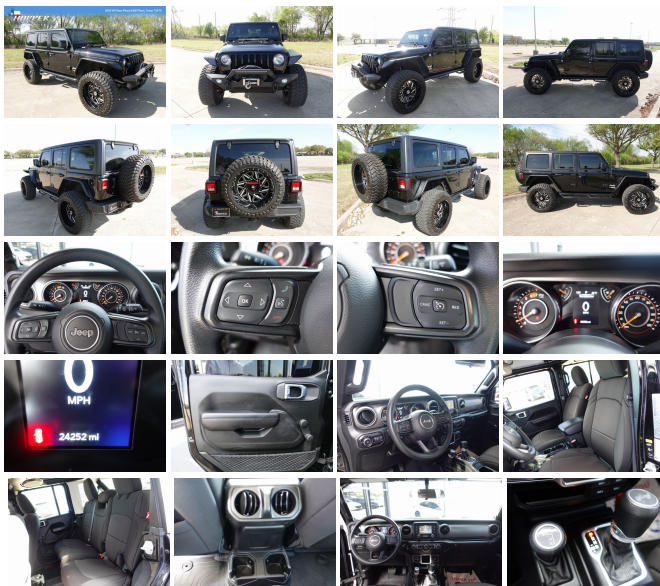
Equipped with a powerful ENGINE: 2.0L I4 DOHC DI TURBO W/ESS and automatic transmission, this Jeep has the power and performance to take on any challenge. Whether you're driving through rough terrain or cruising down the highway, you'll feel confident and in control behind the wheel.

This Jeep has a clean history, with no accidents or damage reported. However, it is sold AS-IS with no warranty, so you can be sure that you're getting a great deal on a high-quality vehicle.

One of the best things about this Jeep is its impressive traction and maneuverability. With its four-wheel drive and high ground clearance, you can take on any off-road trail with ease. Plus, the modern features like the touchscreen display and Bluetooth connectivity make it easy to stay connected and entertained no matter where your adventures take you.

In conclusion, if you're looking for a powerful and capable off-road vehicle that also offers modern features and a sleek design, this 2020 Jeep Wrangler Unlimited Sport is the perfect choice for you. Don't hesitate to schedule a test drive and experience the thrill of driving this Jeep for yourself!

Call David Today at 972-715-8600



Our Location :



Installed Options

Interior

- Front Seats w/Cloth Back Material and Manual Driver Lumbar
- 6-Way Driver Seat -inc: Manual Recline, Height Adjustment, Fore/Aft Movement and Manual Lumbar Support
- Gauges -inc: Speedometer, Odometer, Engine Coolant Temp, Tachometer, Engine Hour Meter, Trip Odometer and Trip Computer
- Cloth Low-Back Bucket Seats
- Full Carpet Floor Covering -inc: Carpet Front And Rear Floor Mats
- Integrated Voice Command w/Bluetooth- Trip Computer
- 4-Way Passenger Seat -inc: Manual Recline and Fore/Aft Movement
- 60-40 Folding Split-Bench Front Facing Fold Forward Seatback Cloth Rear Seat
- Manual Tilt/Telescoping Steering Column
- Manual Rear Windows and Removable 3rd Row Windows- Illuminated Front Cupholder
- Illuminated Rear Cupholder- Compass- Proximity Key For Push Button Start Only
- Cruise Control w/Steering Wheel Controls- Manual Air Conditioning
- HVAC -inc: Console Ducts- Locking Glove Box
- Interior Trim -inc: Metal-Look Instrument Panel Insert and Metal-Look Console Insert
- Urethane Gear Shifter Material- Day-Night Rearview Mirror
- Driver And Passenger Visor Vanity Mirrors w/Driver And Passenger Auxiliary Mirror
- Full Floor Console w/Locking Storage and 2 12V DC Power Outlets
- Front And Rear Map Lights- Fade-To-Off Interior Lighting
- Carpet Floor Trim, Carpet And Rubber Mat- Locking Cargo Area Concealed Storage
- Cargo Space Lights
- Instrument Panel Bin, Dashboard Storage, Driver / Passenger And Rear Door Bins
- Manual 1st Row Windows- Delayed Accessory Power- Systems Monitor
- Redundant Digital Speedometer- Outside Temp Gauge- Analog Appearance
- Manual Adjustable Front Head Restraints and Foldable Rear Head Restraints

Option Packages

Factory Installed Packages

ENGINE: 2.0L I4 DOHC DI TURBO W/ESS

- Front Center Armrest w/Storage- 2 Seatback Storage Pockets- Sentry Key Immobilizer
- 2 12V DC Power Outlets

Exterior

- Black Rear Bumper w/1 Tow Hook- Black Front Bumper w/2 Tow Hooks
- Wheels: 17" x 7.5" Black Steel Styled- Tires: 245/75R17 All Season
- 110 MPH Vehicle Max Speed Calibration- Steel Spare Wheel
- Full-Size Spare Tire Mounted Outside Rear- Clearcoat Paint- Black Fender Flares
- Black Side Windows Trim- Black Door Handles
- Black Manual Side Mirrors w/Manual Folding- Removable Rear Window
- Variable Intermittent Wipers- Light Tinted Glass
- Galvanized Steel/Aluminum/Magnesium Panels
- Manual Convertible Top w/Fixed Roll-Over Protection- Body-Colored Grille
- Conventional Rear Cargo Access- Manual Tailgate/Rear Door Lock
- Aero-Composite Halogen Headlamps w/Delay-Off- Front Fog Lamps
- Non-Lock Fuel Cap w/o Discriminator

Safety

- Front Seats w/Cloth Back Material and Manual Driver Lumbar
- 6-Way Driver Seat -inc: Manual Recline, Height Adjustment, Fore/Aft Movement and Manual Lumbar Support
- Gauges -inc: Speedometer, Odometer, Engine Coolant Temp, Tachometer, Engine Hour Meter, Trip Odometer and Trip Computer
- Cloth Low-Back Bucket Seats
- Full Carpet Floor Covering -inc: Carpet Front And Rear Floor Mats
- Integrated Voice Command w/Bluetooth- Trip Computer
- 4-Way Passenger Seat -inc: Manual Recline and Fore/Aft Movement
- 60-40 Folding Split-Bench Front Facing Fold Forward Seatback Cloth Rear Seat
- Manual Tilt/Telescoping Steering Column
- Manual Rear Windows and Removable 3rd Row Windows- Illuminated Front Cupholder
- Illuminated Rear Cupholder- Compass- Proximity Key For Push Button Start Only
- Cruise Control w/Steering Wheel Controls- Manual Air Conditioning
- HVAC -inc: Console Ducts- Locking Glove Box
- Interior Trim -inc: Metal-Look Instrument Panel Insert and Metal-Look Console Insert
- Urethane Gear Shifter Material- Day-Night Rearview Mirror
- Driver And Passenger Visor Vanity Mirrors w/Driver And Passenger Auxiliary Mirror
- Full Floor Console w/Locking Storage and 2 12V DC Power Outlets
- Front And Rear Map Lights- Fade-To-Off Interior Lighting
- Carpet Floor Trim, Carpet And Rubber Mat- Locking Cargo Area Concealed Storage
- Cargo Space Lights
- Instrument Panel Bin, Dashboard Storage, Driver / Passenger And Rear Door Bins
- Manual 1st Row Windows- Delayed Accessory Power- Systems Monitor
- Redundant Digital Speedometer- Outside Temp Gauge- Analog Appearance
- Manual Adjustable Front Head Restraints and Foldable Rear Head Restraints
- Front Center Armrest w/Storage- 2 Seatback Storage Pockets- Sentry Key Immobilizer
- 2 12V DC Power Outlets

Mechanical

- Engine: 3.6L V6 24V VVT UPG I w/ESS - Transmission: 6-Speed Manual
- 4-Wheel Disc Brakes w/4-Wheel ABS, Front Vented Discs, Brake Assist and Hill Hold Control
- 3.45 Rear Axle Ratio- Normal Duty Suspension- GVWR: 5,300 lbs- 50 State Emissions
- Manual Transfer Case- Part-Time Four-Wheel Drive- Engine Oil Cooler
- 650CCA Maintenance-Free Battery w/Run Down Protection- 180 Amp Alternator
- Aux Battery- Stop-Start Dual Battery System
- Towing Equipment -inc: Trailer Sway Control- 3 Skid Plates- 1233# Maximum Payload
- Gas-Pressurized Shock Absorbers- Front And Rear Anti-Roll Bars
- Electro-Hydraulic Power Assist Steering- 21.5 Gal. Fuel Tank
- Single Stainless Steel Exhaust- Auto Locking Hubs
- Leading Link Front Suspension w/Coil Springs
- Solid Axle Rear Suspension w/Coil Springs- Brake Actuated Limited Slip Differential

1200 Commerce Drive
Plano, TX 75093

© 2024 AutoRevo - All rights reserved. - Powered by AutoRevo