

## 2019 Ford F-150 XLT

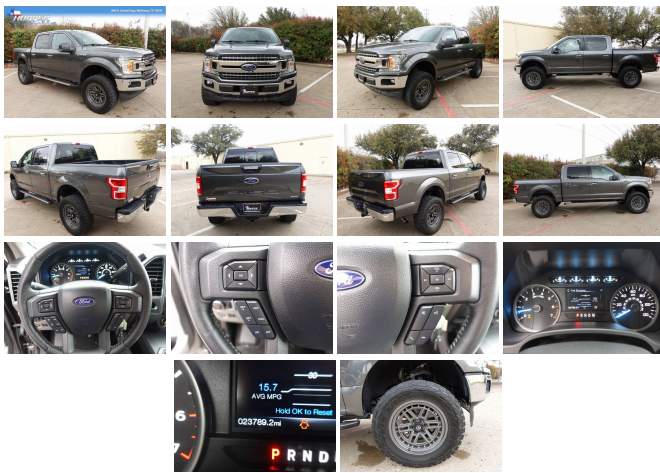
View this car on our website at [fast.autorevo-websites.com/7191090/ebrochure](http://fast.autorevo-websites.com/7191090/ebrochure)



Our Price **\$37,000**

## Specifications:

<b>Year:</b>	2019
<b>VIN:</b>	1FTEW1CP5KFA13507
<b>Make:</b>	Ford
<b>Stock:</b>	13507M
<b>Model/Trim:</b>	F-150 XLT
<b>Condition:</b>	Pre-Owned
<b>Body:</b>	Pickup Truck
<b>Exterior:</b>	Magnetic
<b>Engine:</b>	ENGINE: 2.7L V6 ECOBOOST
<b>Interior:</b>	Medium Earth Gray Cloth
<b>Transmission:</b>	Automatic w/OD
<b>Mileage:</b>	23,738
<b>Drivetrain:</b>	Rear Wheel Drive
<b>Economy:</b>	City 19 / Highway 25



### Summary:

- Low mileage 2019 Ford F-150 XLT with only 23738 miles
- Gray cloth interior for a sleek and modern look
- Powerful ENGINE: 2.7L V6 ECOBOOST and automatic w/OD transmission for a smooth ride
- No Accident or Damage Reported for added peace of mind
- Manufacturer options and packages include ENGINE: 2.7L V6 ECOBOOST

Are you looking for a powerful and reliable truck that can handle any job? Look no further than this 2019 Ford F-150 XLT. With only 23738 miles on the odometer, this truck is practically brand new and ready to take on anything you throw its way.

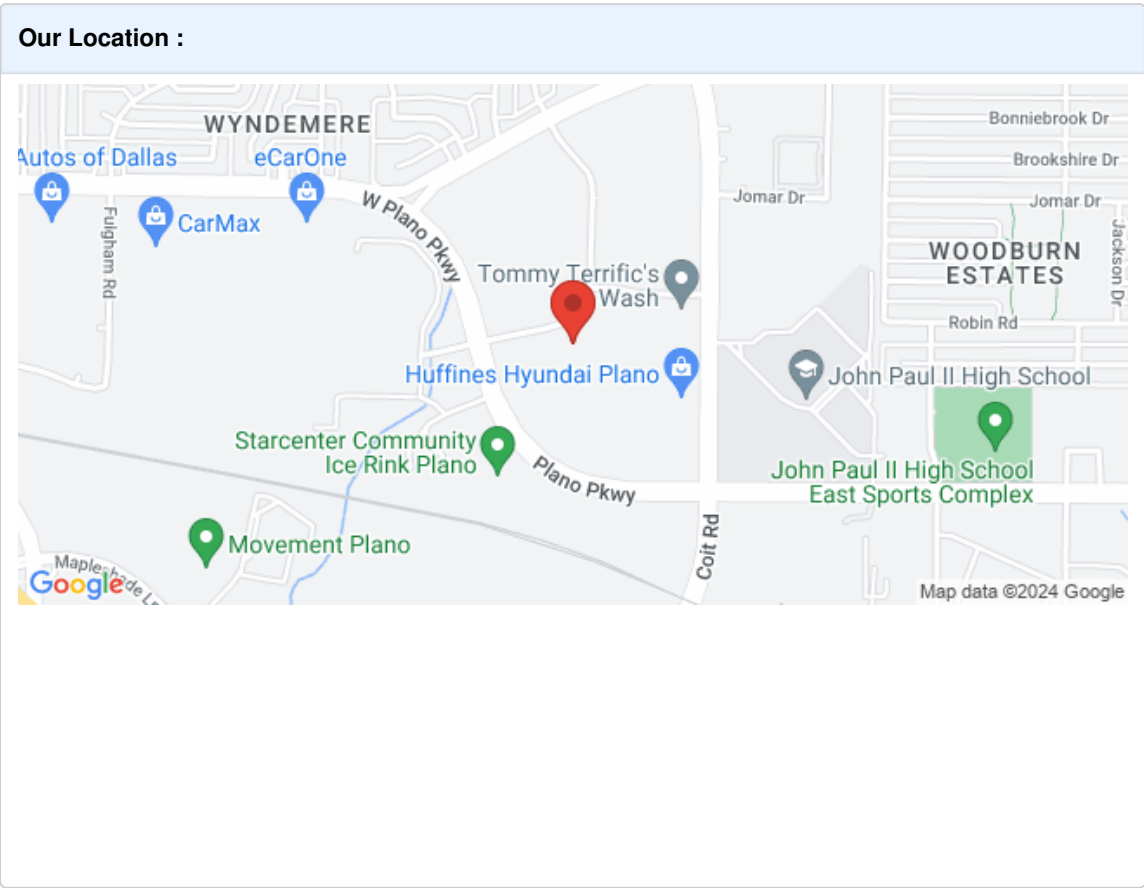
Step inside and you'll be greeted with a sleek and modern gray cloth interior. The comfortable seats and spacious cabin make it the perfect vehicle for long road trips or daily commutes. And with the added convenience of an automatic w/OD transmission, you'll enjoy a smooth ride every time.

Under the hood, you'll find the powerful ENGINE: 2.7L V6 ECOBOOST. This engine is designed to provide maximum power and efficiency, making it the perfect choice for anyone who needs a reliable and powerful truck. And with no Accident or Damage Reported, you can have peace of mind knowing that this vehicle has been well-maintained and cared for.

In addition to its impressive performance and reliability, this 2019 Ford F-150 XLT also comes with a variety of manufacturer options and packages, including ENGINE: 2.7L V6 ECOBOOST. Whether you're looking for a truck that can handle tough jobs or simply want a reliable vehicle for daily use, this Ford F-150 XLT is the perfect choice.

Overall, this 2019 Ford F-150 XLT is an excellent choice for anyone who needs a powerful and reliable truck. With its low mileage, sleek gray cloth interior, and impressive performance, it's sure to impress even the most discerning buyers. So why wait? Come see it for yourself today and experience the power and reliability of a Ford F-150 XLT!

Call David Today at 972-715-8600



2019 Ford F-150 XLT

**Installed Options**

**Interior**

- Cloth 40/20/40 Front Seat -inc: 4-way adjustable driver/passenger headrests, manual driver/passenger lumbar and armrest w/storage
- Power Rear Windows
- Remote Keyless Entry w/Integrated Key Transmitter, Illuminated Entry and Panic Button
- Full Carpet Floor Covering -inc: Carpet Front And Rear Floor Mats
- Smart Device Remote Engine Start
- SYNC 3 -inc: enhanced voice recognition communications and entertainment system, 8" LCD capacitive touchscreen in center stack w/swipe capability, pinch-to-zoom capability included when equipped w/available voice-activated touchscreen navigation system, AppLink, 911 Assist, Apple CarPlay and Android Auto and 2 smart charging USB ports, Note: SYNC AppLink lets you control some of your favorite compatible mobile apps w/your voice, It is compatible w/select smartphone platforms, Commands may vary by phone and AppLink software
- Power 1st Row Windows w/Driver And Passenger 1-Touch Up/Down
- Power Door Locks w/Autolock Feature
- 4-Way Driver Seat -inc: Manual Recline and Fore/Aft Movement
- 4-Way Passenger Seat -inc: Manual Recline and Fore/Aft Movement
- 60-40 Folding Split-Bench Front Facing Fold-Up Cushion Rear Seat
- Manual Tilt/Telescoping Steering Column
- Gauges -inc: Speedometer, Odometer, Voltmeter, Oil Pressure, Engine Coolant Temp, Tachometer, Transmission Fluid Temp and Trip Odometer
- FordPass Connect 4G LTE WiFi Mobile Hotspot Internet Access- Front Cupholder
- Rear Cupholder- Compass- Keypad- Cruise Control w/Steering Wheel Controls
- Manual Air Conditioning- HVAC -inc: Undersat Ducts- Illuminated Locking Glove Box
- Full Cloth Headliner- Urethane Gear Shifter Material
- Interior Trim -inc: Metal-Look Instrument Panel Insert, Cabback Insulator and Chrome Interior Accents
- Day-Night Rearview Mirror- Driver And Passenger Visor Vanity Mirrors
- 3 12V DC Power Outlets- Fade-To-Off Interior Lightins- Pickup Caroo Box Lights

**Option Packages**

**Factory Installed Packages**

<b>ENGINE: 2.7L V6 ECOBOOST</b>	
-inc: auto start-stop technology, GVWR: 6,360 lbs Payload Package	<b>\$995</b>
<b>Option Packages Total</b>	<b>\$995</b>

- Instrument Panel Bin, Dashboard Storage, Driver / Passenger And Rear Door Bins and 1st Row Underseat Storage
- Delayed Accessory Power- Outside Temp Gauge- Analog Appearance
- 2 Seatback Storage Pockets- Manual Adjustable Rear Head Restraints
- Securilock Anti-Theft Ignition (pats) Immobilizer- Perimeter Alarm- Air Filtration

---

## Exterior

- Wheels: 17" Silver Painted Aluminum- Tires: P245/70R17 BSW A/S
- Full-Size Spare Tire Stored Underbody w/Crankdown
- Black Power Side Mirrors w/Convex Spotter and Manual Folding- Deep Tinted Glass
- Tailgate/Rear Door Lock Included w/Power Door Locks
- Auto On/Off Aero-Composite Halogen Auto High-Beam Daytime Running Lights Preference Setting Headlamps w/Delay-Off
- Regular Box Style- Steel Spare Wheel- Clearcoat Paint
- Chrome Front Bumper w/Body-Colored Rub Strip/Fascia Accent
- Chrome Rear Step Bumper- Black Side Windows Trim- Black Door Handles
- Fixed Rear Window- Variable Intermittent Wipers- Aluminum Panels- Chrome Grille
- Tailgate Rear Cargo Access- Cargo Lamp w/High Mount Stop Light
- Headlights-Automatic Highbeams- Front Fog Lamps- Perimeter/Approach Lights

---

## Safety

- Cloth 40/20/40 Front Seat -inc: 4-way adjustable driver/passenger headrests, manual driver/passenger lumbar and armrest w/storage
- Power Rear Windows
- Remote Keyless Entry w/Integrated Key Transmitter, Illuminated Entry and Panic Button
- Full Carpet Floor Covering -inc: Carpet Front And Rear Floor Mats
- Smart Device Remote Engine Start
- SYNC 3 -inc: enhanced voice recognition communications and entertainment system, 8" LCD capacitive touchscreen in center stack w/swipe capability, pinch-to-zoom capability included when equipped w/available voice-activated touchscreen navigation system, AppLink, 911 Assist, Apple CarPlay and Android Auto and 2 smart charging USB ports, Note: SYNC AppLink lets you control some of your favorite compatible mobile apps w/your voice, It is compatible w/select smartphone platforms, Commands may vary by phone and AppLink software
- Power 1st Row Windows w/Driver And Passenger 1-Touch Up/Down
- Power Door Locks w/Autolock Feature
- 4-Way Driver Seat -inc: Manual Recline and Fore/Aft Movement
- 4-Way Passenger Seat -inc: Manual Recline and Fore/Aft Movement
- 60-40 Folding Split-Bench Front Facing Fold-Up Cushion Rear Seat
- Manual Tilt/Telescoping Steering Column
- Gauges -inc: Speedometer, Odometer, Voltmeter, Oil Pressure, Engine Coolant Temp, Tachometer, Transmission Fluid Temp and Trip Odometer
- FordPass Connect 4G LTE WiFi Mobile Hotspot Internet Access- Front Cupholder
- Rear Cupholder- Compass- Keypad- Cruise Control w/Steering Wheel Controls
- Manual Air Conditioning- HVAC -inc: Underseat Ducts- Illuminated Locking Glove Box
- Full Cloth Headliner- Urethane Gear Shifter Material
- Interior Trim -inc: Metal-Look Instrument Panel Insert, Cabback Insulator and Chrome Interior Accents
- Day-Night Rearview Mirror- Driver And Passenger Visor Vanity Mirrors
- 3 12V DC Power Outlets- Fade-To-Off Interior Lighting- Pickup Cargo Box Lights
- Instrument Panel Bin, Dashboard Storage, Driver / Passenger And Rear Door Bins and 1st Row Underseat Storage
- Delayed Accessory Power- Outside Temp Gauge- Analog Appearance
- 2 Seatback Storage Pockets- Manual Adjustable Rear Head Restraints
- Securilock Anti-Theft Ignition (pats) Immobilizer- Perimeter Alarm- Air Filtration

---

## Mechanical

- Engine: 3.3L V6 PFDI -inc: auto start-stop technology and flex-fuel capability
- Transmission: Electronic 6-Speed Automatic -inc: selectable drive modes: normal/tow-haul/sport
- Transmission w/SelectShift Sequential Shift Control- 3.55 Axle Ratio
- GVWR: 6,280 lbs Payload Package- Rear-Wheel Drive
- 70-Amp/Hr 610CCA Maintenance-Free Battery w/Run Down Protection
- 200 Amp Alternator- Towing Equipment -inc: Trailer Sway Control- Trailer Wiring Harness
- 1700# Maximum Payload- HD Shock Absorbers- Front Anti-Roll Bar
- Electric Power-Assist Speed-Sensing Steering- Single Stainless Steel Exhaust
- 26 Gal. Fuel Tank- Double Wishbone Front Suspension w/Coil Springs
- Solid Axle Rear Suspension w/Leaf Springs
- 4-Wheel Disc Brakes w/4-Wheel ABS, Front And Rear Vented Discs, Brake Assist, Hill Hold Control and Electric Parking Brake

---

AutoRevo PowerSites - Demo1

[fast.autorevo-websites.com](http://fast.autorevo-websites.com)

1.888.311.REVO

1200 Commerce Drive

Plano, TX 75093

© 2024 AutoRevo - All rights reserved. - Powered by AutoRevo