

2021 Ford Super Duty F-250 Pickup XLT

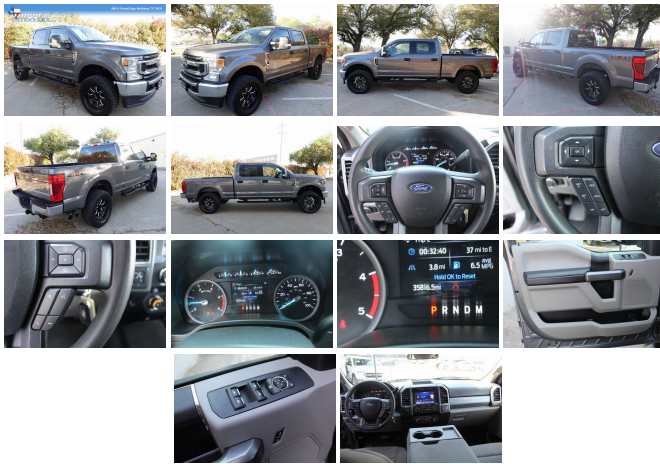
View this car on our website at fast.autorevo-websites.com/7191088/ebrochure



Our Price **\$57,750**

Specifications:

Year:	2021
VIN:	1FT7W2BT9MED43706
Make:	Ford
Stock:	43706M
Model/Trim:	Super Duty F-250 Pickup XLT
Condition:	Pre-Owned
Body:	Pickup Truck
Exterior:	Carbonized Gray Metallic
Engine:	ENGINE: 6.7L 4V OHV POWER STROKE V8 TURBO DIESEL B20
Interior:	Medium Earth Gray Cloth
Transmission:	Automatic w/OD
Mileage:	35,776



- 2021 Ford Super Duty F-250 Pickup XLT in a sleek gray exterior and comfortable gray cloth interior.
- Equipped with a powerful 6.7L 4V OHV POWER STROKE V8 TURBO DIESEL B20 engine and an automatic transmission with OD.
- This vehicle comes with no warranty but has no reported accidents or damage.
- Manufacturer options and packages include the 6.7L 4V OHV POWER STROKE V8 TURBO DIESEL B20 engine.

Looking for a pickup truck that can handle any job you throw at it? Look no further than the 2021 Ford Super Duty F-250 Pickup XLT. With its sleek gray exterior and comfortable gray cloth interior, this truck is sure to turn heads on the road. But it's not just about looks - this truck is built to perform.

Under the hood, you'll find a powerful 6.7L 4V OHV POWER STROKE V8 TURBO DIESEL B20 engine that delivers the kind of performance you need to get the job done. And with an automatic transmission with OD, you'll have smooth and responsive shifting that makes driving a pleasure.

While this vehicle comes with no warranty, you can rest easy knowing that it has no reported accidents or damage. This is a reliable and sturdy vehicle that you can count on to get you where you need to go.

Of course, it's not just about performance and reliability - this truck is also packed with features that make driving more comfortable and convenient. From the spacious and comfortable interior to the advanced technology that keeps you connected on the go, this truck has everything you need to make your driving experience more enjoyable.

So if you're looking for a pickup truck that can handle anything you throw at it, look no further than the 2021 Ford Super Duty F-250 Pickup XLT. With its powerful engine, reliable performance, and comfortable interior, this truck is the perfect combination of style and substance. Come in for a test drive today and see for yourself what makes this truck so special.

Call David Today at 972-715-8600

Our Location :



2021 Ford Super Duty F-250 Pickup XLT
AutoRevo PowerSites - Demo1 - 1.888.311.REVO - View this car on our website at fast.autorevo-websites.com/7191088/ebrochure

Installed Options

Interior

- Gauges -inc: Speedometer, Odometer, Oil Pressure, Engine Coolant Temp, Tachometer, Transmission Fluid Temp, Engine Hour Meter, Trip Odometer and Trip Computer
- Power Rear Windows
- Remote Keyless Entry w/Integrated Key Transmitter, Illuminated Entry and Panic Button
- Cloth 40/20/40 Split Bench Seat -inc: 20% locking center under-seat storage, center armrest, cupholder, storage, 2-way adjustable driver/passenger headrests and driver's side manual lumbar
- Full Carpet Floor Covering -inc: Carpet Front And Rear Floor Mats
- Smart Device Remote Engine Start
- Power 1st Row Windows w/Driver And Passenger 1-Touch Up/Down - Power Door Locks
- Trip Computer- 4-Way Driver Seat -inc: Manual Recline and Fore/Aft Movement
- 4-Way Passenger Seat -inc: Manual Recline and Fore/Aft Movement
- 60-40 Folding Split-Bench Front Facing Fold-Up Cushion Rear Seat
- Manual Tilt/Telescoping Steering Column
- FordPass Connect 4G Mobile Hotspot Internet Access- Rear Cupholder
- Cruise Control w/Steering Wheel Controls- Manual Air Conditioning
- HVAC -inc: Underseat Ducts- Illuminated Locking Glove Box- Full Cloth Headliner
- Urethane Gear Shifter Material
- Interior Trim -inc: Metal-Look Instrument Panel Insert and Chrome Interior Accents
- Day-Night Rearview Mirror- Driver And Passenger Visor Vanity Mirrors
- 3 12V DC Power Outlets- Full Overhead Console w/Storage and 3 12V DC Power Outlets
- Fade-To-Off Interior Lighting- Front And Rear Map Lights
- Engine Compartment And Pickup Cargo Box Lights
- 110V/400W Outlet -inc: 1 in-dash mounted outlet
- Instrument Panel Covered Bin, Dashboard Storage, Driver / Passenger And Rear Door Bins
- Delayed Accessory Power- Systems Monitor- Outside Temp Gauge
- Digital/Analog Appearance- Seats w/Cloth Back Material
- Manual Adjustable Rear Head Restraints- 2 Seatback Storage Pockets
- Securilock Anti-Theft Ignition (pats) Immobilizer- Perimeter Alarm- Air Filtration

Option Packages

Factory Installed Packages

ENGINE: 6.7L 4V OHV POWER STROKE V8 TURBO DIESEL B20
-inc: manual push-button engine-exhaust braking and intelligent oil-life monitor, 175 Amp Heavy Duty Alternator, 34 Gallon Fuel Tank, 3.31 Axle Ratio, Dual 78-AH 750 CCA Batteries

Option Packages Total
\$10,495

Exterior

- Wheels: 18" Sparkle Silver Painted Cast Aluminum -inc: bright hub covers/center ornaments
- Tires: LT275/65Rx18E BSW A/S -inc: Spare may not be the same as road tire
- Chrome Front Bumper w/Body-Colored Rub Strip/Fascia Accent and 2 Tow Hooks
- Black Power Heated Side Mirrors w/Convex Spotter, Manual Folding and Turn Signal Indicator
- Tailgate/Rear Door Lock Included w/Power Door Locks
- Autolamp Auto On/Off Aero-Composite Halogen Auto High-Beam Daytime Running Lights Preference Setting Headlamps w/Delay-Off
- Regular Box Style- Steel Spare Wheel- Spare Tire Stored Underbody w/Crankdown
- Clearcoat Paint Chrome Rear Step Bumper
- Black Side Windows Trim and Black Front Windshield Trim - Black Door Handles
- Manual Extendable Trailer Style Mirrors- Fixed Rear Window
- Variable Intermittent Wipers- Privacy Glass- Aluminum Panels
- Black Grille w/Chrome Accents- Tailgate Rear Cargo Access
- Cargo Lamp w/High Mount Stop Light- Perimeter/Approach Lights
- Headlights-Automatic Highbeams

Safety

- Gauges -inc: Speedometer, Odometer, Oil Pressure, Engine Coolant Temp, Tachometer, Transmission Fluid Temp, Engine Hour Meter, Trip Odometer and Trip Computer
- Power Rear Windows
- Remote Keyless Entry w/Integrated Key Transmitter, Illuminated Entry and Panic Button
- Cloth 40/20/40 Split Bench Seat -inc: 20% locking center under-seat storage, center armrest, cupholder, storage, 2-way adjustable driver/passenger headrests and driver's side manual lumbar
- Full Carpet Floor Covering -inc: Carpet Front And Rear Floor Mats
- Smart Device Remote Engine Start
- Power 1st Row Windows w/Driver And Passenger 1-Touch Up/Down - Power Door Locks
- Trip Computer- 4-Way Driver Seat -inc: Manual Recline and Fore/Aft Movement
- 4-Way Passenger Seat -inc: Manual Recline and Fore/Aft Movement
- 60-40 Folding Split-Bench Front Facing Fold-Up Cushion Rear Seat
- Manual Tilt/Telescoping Steering Column
- FordPass Connect 4G Mobile Hotspot Internet Access- Rear Cupholder
- Cruise Control w/Steering Wheel Controls- Manual Air Conditioning
- HVAC -inc: Underseat Ducts- Illuminated Locking Glove Box- Full Cloth Headliner
- Urethane Gear Shifter Material
- Interior Trim -inc: Metal-Look Instrument Panel Insert and Chrome Interior Accents
- Day-Night Rearview Mirror- Driver And Passenger Visor Vanity Mirrors
- 3 12V DC Power Outlets- Full Overhead Console w/Storage and 3 12V DC Power Outlets
- Fade-To-Off Interior Lighting- Front And Rear Map Lights
- Engine Compartment And Pickup Cargo Box Lights
- 110V/400W Outlet -inc: 1 in-dash mounted outlet
- Instrument Panel Covered Bin, Dashboard Storage, Driver / Passenger And Rear Door Bins
- Delayed Accessory Power- Systems Monitor- Outside Temp Gauge
- Digital/Analog Appearance Seats w/Cloth Back Material
- Manual Adjustable Rear Head Restraints- 2 Seatback Storage Pockets
- Securilock Anti-Theft Ignition (pats) Immobilizer- Perimeter Alarm- Air Filtration

Mechanical

- Engine: 6.2L 2-Valve SOHC EFI NA V8 Flex-Fuel
 - Transmission: TorqShift-G 6-Spd Auto w/SelectShift
 - Class V Towing Equipment -inc: Hitch, Brake Controller and Trailer Sway Control
 - 3.73 Axle Ratio- GVWR: 10,000 lb Payload Package- 50-State Emissions System
 - Transmission w/Oil Cooler- Electronic Transfer Case- Part-Time Four-Wheel Drive
 - 78-Amp/Hr 750CCA Maintenance-Free Battery w/Run Down Protection
 - HD 200 Amp Alternator- Trailer Wiring Harness- 3470# Maximum Payload
 - HD Shock Absorbers- Front Anti-Roll Bar- Firm Suspension
 - Hydraulic Power-Assist Steering- 34 Gal. Fuel Tank- Single Stainless Steel Exhaust
 - Auto Locking Hubs- Front Suspension w/Coil Springs
 - Solid Axle Rear Suspension w/Leaf Springs
 - 4-Wheel Disc Brakes w/4-Wheel ABS, Front And Rear Vented Discs, Brake Assist and Hill Hold Control
-

AutoRevo PowerSites - Demo1

fast.autorevo-websites.com

1.888.311.REVO

1200 Commerce Drive

Plano, TX 75093

© 2024 AutoRevo - All rights reserved. - Powered by AutoRevo