

## 2019 Ford F-150 LARIAT

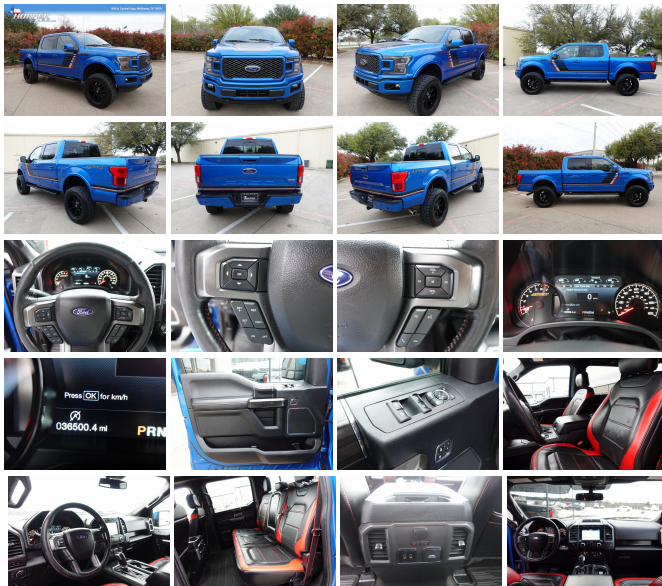
View this car on our website at [fast.autorevo-websites.com/7191072/ebrochure](http://fast.autorevo-websites.com/7191072/ebrochure)



Our Price **\$49,500**

## Specifications:

|                      |                          |
|----------------------|--------------------------|
| <b>Year:</b>         | 2019                     |
| <b>VIN:</b>          | 1FTEW1E45KFB23640        |
| <b>Make:</b>         | Ford                     |
| <b>Stock:</b>        | 23640M                   |
| <b>Model/Trim:</b>   | F-150 LARIAT             |
| <b>Condition:</b>    | Pre-Owned                |
| <b>Body:</b>         | Pickup Truck             |
| <b>Exterior:</b>     | Blue                     |
| <b>Engine:</b>       | ENGINE: 3.5L V6 ECOBOOST |
| <b>Interior:</b>     | Black Leather            |
| <b>Transmission:</b> | Automatic w/OD           |
| <b>Mileage:</b>      | 36,341                   |
| <b>Drivetrain:</b>   | 4 Wheel Drive            |
| <b>Economy:</b>      | City 17 / Highway 23     |



1. Low mileage 2019 Ford F-150 LARIAT in stunning blue exterior and black leather interior
2. Equipped with a powerful ENGINE: 3.5L V6 ECOBOOST and automatic transmission with OD
3. AS-IS No Warranty, but manufacturer options and packages include ENGINE: 3.5L V6 ECOBOOST
4. Spacious and comfortable interior with advanced technology features
5. Perfect for work or play, this truck is a reliable and stylish choice for any driver

Looking for a truck that is both powerful and stylish? Look no further than the 2019 Ford F-150 LARIAT! This low mileage beauty boasts a stunning blue exterior and black leather interior that will turn heads wherever you go. With only 36341 miles on the odometer, this truck is practically brand new and ready for all your adventures.

Under the hood, you'll find an ENGINE: 3.5L V6 ECOBOOST that delivers impressive power and performance. Paired with an automatic transmission with OD, this truck handles like a dream on the road. Although this truck is sold AS-IS with no warranty, the manufacturer options and packages include the ENGINE: 3.5L V6 ECOBOOST, which is a testament to its reliability and durability.

Inside, the 2019 Ford F-150 LARIAT offers a spacious and comfortable interior with all the advanced technology features you could want. From the SYNC 3 infotainment system to the dual-zone automatic climate control, this truck has everything you need to stay connected and comfortable on the road.

Whether you need a truck for work or play, the 2019 Ford F-150 LARIAT is the perfect choice. With its powerful ENGINE: 3.5L V6 ECOBOOST, comfortable and advanced interior, and stylish exterior, this truck is sure to impress. Don't miss your chance to own this reliable and stylish vehicle today!

Call David Today at 972-715-8600

**Our Location :**



2019 Ford F-150 LARIAT  
AutoRevo PowerSites - Demo1 - 1.888.311.REVO - View this car on our website at [fast.autorevo-websites.com/7191072/ebrochure](http://fast.autorevo-websites.com/7191072/ebrochure)

**Installed Options**

**Interior**

- Leather-Trimmed 40/20/40 Front Seat -inc: 4-way adjustable driver/passenger headrests, heated and ventilated 10-way power driver and passenger w/power lumbar and memory driver's seat
- Manual Tilt/Telescoping Steering Column
- Gauges -inc: Speedometer, Odometer, Voltmeter, Oil Pressure, Engine Coolant Temp, Tachometer, Inclinator, Transmission Fluid Temp, Trip Odometer and Trip Computer
- Power Rear Windows
- Remote Keyless Entry w/Integrated Key Transmitter, Illuminated Entry and Panic Button
- Proximity Key For Doors And Push Button Start
- Cruise Control w/Steering Wheel Controls
- Interior Trim -inc: Simulated Wood/Metal-Look Instrument Panel Insert, Cabback Insulator, Simulated Wood/Metal-Look Door Panel Insert and Chrome Interior Accents
- Full Carpet Floor Covering -inc: Carpet Front And Rear Floor Mats
- Smart Device Remote Engine Start- Memory Settings -inc: Door Mirrors and Pedals
- FOB Controls -inc: Cargo Access
- SYNC 3 -inc: enhanced voice recognition communications and entertainment system, 8" LCD capacitive touchscreen in center stack w/swipe capability, pinch-to-zoom capability included when equipped w/available voice-activated touchscreen navigation system, AppLink, 911 Assist, Apple CarPlay and Android Auto and 2 smart charging USB ports, Note: SYNC AppLink lets you control some of your favorite compatible mobile apps w/your voice, It is compatible w/select smartphone platforms, Commands may vary by phone and AppLink software
- Power 1st Row Windows w/Driver And Passenger 1-Touch Up/Down
- Power Door Locks w/Autolock Feature- Trip Computer- Driver Seat- Passenger Seat
- 60/40 Folding Split-Bench Front Facing Fold-Up Cushion Rear Seat
- FordPass Connect 4G LTE WiFi Mobile Hotspot Internet Access
- Leather/Metal-Look Steering Wheel- Front Cupholder- Rear Cupholder- Compass
- Keypad- HVAC -inc: Underseat Ducts
- Voice Activated Dual Zone Front Automatic Air Conditioning
- Illuminated Locking Glove Box- Full Cloth Headliner- Urethane Gear Shifter Material
- Day-Night Auto-Dimming Rearview Mirror

**Option Packages**

**Factory Installed Packages**

|  |         |
|--|---------|
| ENGINE: 3.5L V6 ECOBOOST   |         |
| -inc: auto start-stop technology, GVWR: 7,000 lbs Payload Package, 3.31 Axle Ratio | \$1,600 |
| Option Packages Total  |         |
|  | \$1,600 |

- Day-Night Auto-Dimming Rearview Mirror
- Driver And Passenger Visor Vanity Mirrors w/Driver And Passenger Illumination
- 3 12V DC Power Outlets
- Mini Overhead Console w/Storage and 3 12V DC Power Outlets
- Fade-To-Off Interior Lighting- Front And Rear Map Lights- Pickup Cargo Box Lights
- Instrument Panel Bin, Dashboard Storage, Driver / Passenger And Rear Door Bins, 1st Row Underseat Storage and 2nd Row Underseat Storage
- Delayed Accessory Power- Power Adjustable Pedals- Outside Temp Gauge
- Systems Monitor- Redundant Digital Speedometer- Digital/Analog Appearance
- 2 Seatback Storage Pockets- Manual Adjustable Rear Head Restraints
- Front Center Armrest w/Storage and Rear Center Armrest
- Securilock Anti-Theft Ignition (pats) Immobilizer- Perimeter Alarm- Air Filtration

## Exterior

- Wheels: 18" Machined-Aluminum -inc: flash gray painted pockets
- Tires: P275/65R18 OWL A/T- Full-Size Spare Tire Stored Underbody w/Crankdown
- Chrome Front Bumper w/Body-Colored Rub Strip/Fascia Accent and 2 Tow Hooks
- Body-Colored Power Heated Side Mirrors w/Driver Auto Dimming, Convex Spotter, Power Folding and Turn Signal Indicator
- Variable Intermittent Wipers- Tailgate/Rear Door Lock Included w/Power Door Locks
- Auto On/Off Aero-Composite Halogen Auto High-Beam Daytime Running Lights Preference Setting Headlamps w/Delay-Off
- Regular Box Style- Steel Spare Wheel- Clearcoat Paint- Chrome Rear Step Bumper
- Black Side Windows Trim- Body-Colored Wheel Well Trim- Body-Colored Door Handles
- Power Rear Window w/Defroster- Deep Tinted Glass- Aluminum Panels- Chrome Grille
- Tailgate Rear Cargo Access- Cargo Lamp w/High Mount Stop Light
- Headlights-Automatic Highbeams- Front Fog Lamps- Perimeter/Approach Lights

## Safety

- Leather-Trimmed 40/20/40 Front Seat -inc: 4-way adjustable driver/passenger headrests, heated and ventilated 10-way power driver and passenger w/power lumbar and memory driver's seat
- Manual Tilt/Telescoping Steering Column
- Gauges -inc: Speedometer, Odometer, Voltmeter, Oil Pressure, Engine Coolant Temp, Tachometer, Inclinator, Transmission Fluid Temp, Trip Odometer and Trip Computer
- Power Rear Windows
- Remote Keyless Entry w/Integrated Key Transmitter, Illuminated Entry and Panic Button
- Proximity Key For Doors And Push Button Start
- Cruise Control w/Steering Wheel Controls
- Interior Trim -inc: Simulated Wood/Metal-Look Instrument Panel Insert, Cabback Insulator, Simulated Wood/Metal-Look Door Panel Insert and Chrome Interior Accents
- Full Carpet Floor Covering -inc: Carpet Front And Rear Floor Mats
- Smart Device Remote Engine Start- Memory Settings -inc: Door Mirrors and Pedals
- FOB Controls -inc: Cargo Access
- SYNC 3 -inc: enhanced voice recognition communications and entertainment system, 8" LCD capacitive touchscreen in center stack w/swipe capability, pinch-to-zoom capability included when equipped w/available voice-activated touchscreen navigation system, AppLink, 911 Assist, Apple CarPlay and Android Auto and 2 smart charging USB ports, Note: SYNC AppLink lets you control some of your favorite compatible mobile apps w/your voice, It is compatible w/select smartphone platforms, Commands may vary by phone and AppLink software
- Power 1st Row Windows w/Driver And Passenger 1-Touch Up/Down
- Power Door Locks w/Autolock Feature- Trip Computer- Driver Seat- Passenger Seat
- 60-40 Folding Split-Bench Front Facing Fold-Up Cushion Rear Seat
- FordPass Connect 4G LTE WiFi Mobile Hotspot Internet Access
- Leather/Metal-Look Steering Wheel- Front Cupholder- Rear Cupholder- Compass
- Keypad- HVAC -inc: Underseat Ducts
- Voice Activated Dual Zone Front Automatic Air Conditioning
- Illuminated Locking Glove Box- Full Cloth Headliner- Urethane Gear Shifter Material
- Day-Night Auto-Dimming Rearview Mirror
- Driver And Passenger Visor Vanity Mirrors w/Driver And Passenger Illumination
- 3 12V DC Power Outlets
- Mini Overhead Console w/Storage and 3 12V DC Power Outlets
- Fade-To-Off Interior Lighting- Front And Rear Map Lights- Pickup Cargo Box Lights
- Instrument Panel Bin, Dashboard Storage, Driver / Passenger And Rear Door Bins, 1st Row Underseat Storage and 2nd Row Underseat Storage
- Delayed Accessory Power- Power Adjustable Pedals- Outside Temp Gauge
- Systems Monitor- Redundant Digital Speedometer- Digital/Analog Appearance
- 2 Seatback Storage Pockets- Manual Adjustable Rear Head Restraints
- Front Center Armrest w/Storage and Rear Center Armrest
- Securilock Anti-Theft Ignition (pats) Immobilizer- Perimeter Alarm- Air Filtration

## Mechanical

- Engine: 2.7L V6 EcoBoost -inc: auto start-stop technology
- Transmission: Electronic 10-Speed Automatic -inc: selectable drive modes: normal/tow-haul/snow-wet/EcoSelect/sport
- Transmission w/SelectShift Sequential Shift Control- 3.55 Axle Ratio
- GVWR: 6,600 lbs Payload Package- Electronic Transfer Case
- Automatic Full-Time Four-Wheel Drive
- 70-Amp/Hr 610CCA Maintenance-Free Battery w/Run Down Protection
- 200 Amp Alternator- Towing Equipment -inc: Trailer Sway Control
- Class IV Trailer Hitch Receiver -inc: towing capability up to 6,000 lbs on 3.3L V6 PFDI engine (99B) and 2.7L EcoBoost engine (99P) or up to 7,000 lbs on 3.5L EcoBoost engine (994), 3.5L EcoBoost High Output engine (99G) and 5.0L V8 engine (995), smart trailer tow connector and 4-pin/7-pin wiring harness Ordering the Trailer Tow Package does not include Integrated Brake Controller (67T). Integrated Brake Controller (67T) is a standalone option and must be ordered separately.
- 1690# Maximum Payload- HD Shock Absorbers- Front Anti-Roll Bar
- Electric Power-Assist Speed-Sensing Steering- Single Stainless Steel Exhaust
- 26 Gal. Fuel Tank- Auto Locking Hubs
- Double Wishbone Front Suspension w/Coil Springs
- Solid Axle Rear Suspension w/Leaf Springs
- 4-Wheel Disc Brakes w/4-Wheel ABS, Front And Rear Vented Discs, Brake Assist, Hill Hold Control and Electric Parking Brake

---

AutoRevo PowerSites - Demo1

[fast.autorevo-websites.com](http://fast.autorevo-websites.com)

1.888.311.REVO

1200 Commerce Drive

Plano, TX 75093

© 2024 AutoRevo - All rights reserved. - **Powered by AutoRevo**