



## 2016 Subaru WRX Premium

**Our Price \$17,500**

View this vehicle on our website at [stellarautoinc.com](http://stellarautoinc.com)

**STELLAR**  
- AUTO INC -

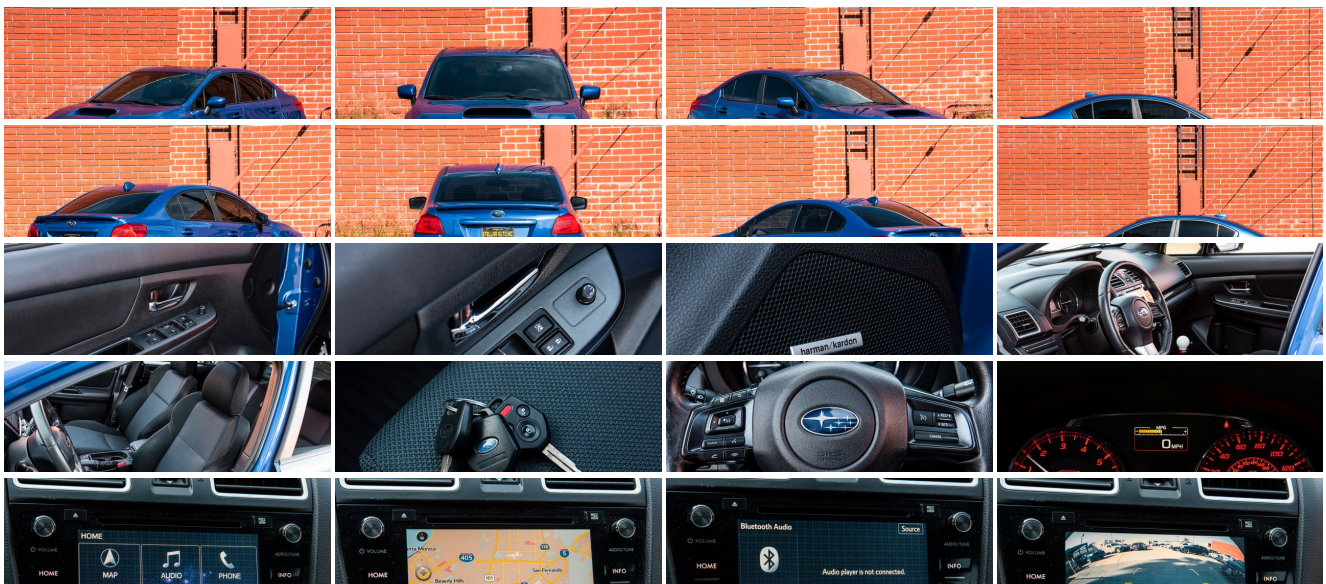
(818) 809-8676

2220 N Hollywood Way , Burbank, CA 91505

Photos

Details

Contact



## Specifications:

<b>Year:</b>	2016
<b>VIN:</b>	JF1VA1F68G9810606
<b>Make:</b>	Subaru
<b>Stock:</b>	op16wrxblue
<b>Model/Trim:</b>	WRX Premium
<b>Condition:</b>	Pre-Owned
<b>Body:</b>	Sedan
<b>Exterior:</b>	WR Blue Pearl
<b>Engine:</b>	Engine: 2.0L DOHC Intercooled Turbocharged -inc: Dual Active Valve Control System (ADVCS), variable valve timing, Electronic Throttle Control (ETC) and SI-DRIVE engine performance management (automatic transmission models only)
<b>Interior:</b>	Carbon Black Cloth
<b>Transmission:</b>	Manual w/OD
<b>Mileage:</b>	89,308
<b>Drivetrain:</b>	All Wheel Drive
<b>Economy:</b>	City 20 / Highway 27

## Vehicle Description

*PLEASE NOTE: BY APPOINTMENT ONLY!*

\*\*\*CLEAN TITLE\*\*\*ONE OWNER VEHICLE!!!\*\*PERSONAL CALIFORNIA CAR FROM DAY ONE\*\*\*ALL ORIGINAL

\*\*\*Books and manuals, second key and valet key included

\*\*\*Original shifter included

\*\*\*TRADE-INS ARE WELCOME\*\*\*NATIONWIDE SHIPPING AT WHOLESALE RATES\*\*\*FINANCING AVAILABLE\*\*\*WE OFFER EXTENDED WARRANTIES\*\*\*OUR PRICES ARE NO-HAGGLE\*\*\*

### Installed Options

#### Interior

- Full Carpet Floor Covering -inc: Carpet Front And Rear Floor Mats
- Gauges -inc: Speedometer, Odometer, Engine Coolant Temp, Tachometer, Turbo/Supercharger Boost, Trip Odometer and Trip Computer
- Perimeter Alarm- Power 1st Row Windows w/Driver 1-Touch Up/Down
- Power Door Locks- Power Rear Windows
- Remote Keyless Entry w/Integrated Key Transmitter, Illuminated Entry and Panic Button
- Trip Computer- 2 12V DC Power Outlets
- 4-Way Passenger Seat -inc: Manual Recline and Fore/Aft Movement
- 60-40 Folding Bench Front Facing Fold Forward Seatback Rear Seat - Air Filtration
- Analog Appearance- Automatic Air Conditioning- Cargo Area Concealed Storage
- Cargo Space Lights- Carpet Floor Trim and Carpet Trunk Lid/Rear Cargo Door Trim
- Checkered Cloth Upholstery -inc: red stitching- Cloth Door Trim Insert
- Cruise Control w/Steering Wheel Controls- Day-Night Rearview Mirror
- Driver And Passenger Heated-Cushion, Driver And Passenger Heated-Seatback
- Driver And Passenger Visor Vanity Mirrors w/Driver And Passenger Illumination
- Driver Foot Rest- Driver Seat- FOB Controls -inc: Cargo Access
- Fade-To-Off Interior Lighting- Front Center Armrest and Rear Center Armrest
- Front Cupholder- Front Map Lights- Full Cloth Headliner
- Full Floor Console w/Covered Storage, Mini Overhead Console and 2 12V DC Power Outlets
- HVAC -inc: Underseat Ducts- Illuminated Locking Glove Box- Immobilizer
- Instrument Panel Bin, Driver / Passenger And Rear Door Bins
- Interior Trim -inc: Simulated Carbon Fiber Instrument Panel Insert, Metal-Look Door Panel Insert, Metal-Look Console Insert and Chrome/Aluminum Interior Accents
- Leather Gear Shifter Material- Manual Adjustable Rear Head Restraints
- Manual Tilt/Telescoping Steering Column- Outside Temp Gauge
- Performance Design Heated Front Bucket Seats -inc: height adjustable driver's seat,

### Option Packages

#### Factory Installed Packages

##### RADIO: SUBARU STARLINK 7.0" MULTIMEDIA NAV SYSTEM

-inc: AM/FM stereo HD radio w/single-disc CD player w/MP3/WMA/CRR/RW file capability, Radio Broadcast Data System (RBDS), Bluetooth audio streaming connectivity, Bluetooth hands-free phone connectivity, Bluetooth hands-free text messaging connectivity, iPod control capability, iTunes tagging capability, rear-vision camera, SMS text messaging capability, SiriusXM All Access radio (subscription required), SiriusXM Traffic (subscription required), SiriusXM Travel Link (subscription required), dual USB ports, 3.5mm auxiliary input jack, harman kardon 440 watt equivalent amplifier, harman kardon 9 speaker system (includes subwoofer) and roof mounted audio and satellite antenna, StarLink enrollment cannot be applicable to Fleet Management Companies (FMCs) or to Commercial fleet accounts at this time, Smartphone Integration, AHA, Pandora, iHeart radio and MirrorLink, Navigation System, 7.0" LCD multi touch gesture high resolution display screen, SD card map and voice activated controls

##### NAVIGATION SYSTEM W/HARMAN KARDON AUDIO

-inc: Radio: Subaru Starlink 7.0" Multimedia Nav System, AM/FM stereo HD radio w/single-disc CD player w/MP3/WMA/CRR/RW file capability, Radio Broadcast Data System (RBDS).

\$2,100

<ul style="list-style-type: none"> <li>height and tilt adjustable head restraints, front passenger seatback pocket and whiplash protection</li> <li>- Rear Cupholder- Remote Releases -Inc: Power Cargo Access and Mechanical Fuel</li> <li>- Seats w/Cloth Back Material- Sport Leather/Metal-Look Steering Wheel</li> <li>- Systems Monitor- Valet Function</li> </ul>
<b>Exterior</b> <ul style="list-style-type: none"> <li>- Wheels: 18" x 8.5J Aluminum Alloy/Dark Gray Finish</li> <li>- Auto Off Projector Beam Halogen Daytime Running Headlamps- Black Grille</li> <li>- Black Side Windows Trim and Black Front Windshield Trim</li> <li>- Body-Colored Door Handles- Body-Colored Front Bumper</li> <li>- Body-Colored Power Heated Side Mirrors w/Manual Folding</li> <li>- Body-Colored Rear Bumper- Clearcoat Paint</li> <li>- Compact Spare Tire Mounted Inside Under Cargo</li> <li>- Express Open/Close Sliding And Tilting Glass 1st Row Sunroof w/Sunshade</li> <li>- Fixed Rear Window w/Defroster- Front Fog Lamps- Front License Plate Bracket</li> <li>- Galvanized Steel/Aluminum Panels- Light Tinted Glass- Lip Spoiler</li> <li>- Rocker Panel Extensions- Steel Spare Wheel</li> <li>- Tires: P245/40 R18 97W Summer Performance- Trunk Rear Cargo Access</li> <li>- Variable Intermittent Wipers w/Heated Wiper Park</li> </ul>
<b>Safety</b> <ul style="list-style-type: none"> <li>- Full Carpet Floor Covering -inc: Carpet Front And Rear Floor Mats</li> <li>- Gauges -inc: Speedometer, Odometer, Engine Coolant Temp, Tachometer, Turbo/Supercharger Boost, Trip Odometer and Trip Computer</li> <li>- Perimeter Alarm- Power 1st Row Windows w/Driver 1-Touch Up/Down</li> <li>- Power Door Locks- Power Rear Windows</li> <li>- Remote Keyless Entry w/Integrated Key Transmitter, Illuminated Entry and Panic Button</li> <li>- Trip Computer- 2 12V DC Power Outlets</li> <li>- 4-Way Passenger Seat -inc: Manual Recline and Fore/Aft Movement</li> <li>- 60-40 Folding Bench Front Facing Fold Forward Seatback Rear Seat - Air Filtration</li> <li>- Analog Appearance- Automatic Air Conditioning- Cargo Area Concealed Storage</li> <li>- Cargo Space Lights- Carpet Floor Trim and Carpet Trunk Lid/Rear Cargo Door Trim</li> <li>- Checkered Cloth Upholstery -inc: red stitching- Cloth Door Trim Insert</li> <li>- Cruise Control w/Steering Wheel Controls- Day-Night Rearview Mirror</li> <li>- Driver And Passenger Heated-Cushion, Driver And Passenger Heated-Seatback</li> <li>- Driver And Passenger Visor Vanity Mirrors w/Driver And Passenger Illumination</li> <li>- Driver Foot Rest- Driver Seat- FOB Controls -inc: Cargo Access</li> <li>- Fade-To-Off Interior Lighting- Front Center Armrest and Rear Center Armrest</li> <li>- Front Cupholder- Front Map Lights- Full Cloth Headliner</li> <li>- Full Floor Console w/Covered Storage, Mini Overhead Console and 2 12V DC Power Outlets</li> <li>- HVAC -inc: Underseat Ducts- Illuminated Locking Glove Box- Immobilizer</li> <li>- Instrument Panel Bin, Driver / Passenger And Rear Door Bins</li> <li>- Interior Trim -inc: Simulated Carbon Fiber Instrument Panel Insert, Metal-Look Door Panel Insert, Metal-Look Console Insert and Chrome/Aluminum Interior Accents</li> <li>- Leather Gear Shifter Material- Manual Adjustable Rear Head Restraints</li> <li>- Manual Tilt/Telescoping Steering Column- Outside Temp Gauge</li> <li>- Performance Design Heated Front Bucket Seats -inc: height adjustable driver's seat, height and tilt adjustable head restraints, front passenger seatback pocket and whiplash protection</li> <li>- Rear Cupholder- Remote Releases -Inc: Power Cargo Access and Mechanical Fuel</li> <li>- Seats w/Cloth Back Material- Sport Leather/Metal-Look Steering Wheel</li> <li>- Systems Monitor- Valet Function</li> </ul>
<b>Mechanical</b> <ul style="list-style-type: none"> <li>- 15.9 Gal. Fuel Tank</li> <li>- 4-Wheel Disc Brakes w/4-Wheel ABS, Front Vented Discs, Brake Assist and Hill Hold Control</li> <li>- 4.11 Axle Ratio- Double Wishbone Rear Suspension w/Coil Springs</li> <li>- Electric Power-Assist Speed-Sensing Steering- Engine Oil Cooler</li> <li>- Engine: 2.0L DOHC Intercooled Turbocharged -inc: Dual Active Valve Control System (ADVCS), variable valve timing, Electronic Throttle Control (ETC) and SI-DRIVE engine performance management (automatic transmission models only)</li> <li>- Front And Rear Anti-Roll Bars- Full-Time All-Wheel- Gas-Pressurized Shock Absorbers</li> <li>- Quasi-Dual Stainless Steel Exhaust w/Polished Tailpipe Finisher</li> <li>- Sport Tuned Suspension- Strut Front Suspension w/Coil Springs</li> <li>- Transmission: 6-Speed Manual</li> </ul>

<ul style="list-style-type: none"> <li>Radio Broadcast Data System (RBDS), Bluetooth audio streaming connectivity, Bluetooth hands-free phone connectivity, Bluetooth hands-free text messaging connectivity, iPod control capability, iTunes tagging capability, rear-vision camera, SMS text messaging capability, SiriusXM All Access radio (subscription required), SiriusXM Traffic (subscription required), SiriusXM Travel Link (subscription required), dual USB ports, 3.5mm auxiliary input jack, harman kardon 440 watt equivalent amplifier, harman kardon 9 speaker system (includes subwoofer) and roof mounted audio and satellite antenna, StarLink enrollment cannot be applicable to Fleet Management Companies (FMCs) or to Commercial fleet accounts at this time, Smartphone Integration, AHA, Pandora, iHeart radio and MirrorLink, Navigation System,</li> </ul>
<b>WR BLUE PEARL</b>
<b>CARBON BLACK, CHECKERED CLOTH UPHOLSTERY</b> -inc: red stitching
<div> <div>Option Packages Total</div> <div>\$2,100</div> </div>

Stellar Auto INC.

View this car on our website at [stellarautoinc.com/7190625](https://stellarautoinc.com/7190625)

Website: [stellarautoinc.com](https://stellarautoinc.com)

Phone: (818) 809-8676

Map: [2220 N Hollywood Way, Burbank, CA 91505](#)

