

2023 Jeep Gladiator Sport 4X4 DIESEL,DUPONT KEVLAR,LIFTED,BUMPERS,NAV

View this car on our website at tveauto.com/7190028/ebrochure



Our Price **\$88,900**

Specifications:

Year:	2023
VIN:	1C6JJTAM1PL534998
Make:	Jeep
Stock:	534998
Model/Trim:	Gladiator Sport 4X4 DIESEL,DUPONT KEVLAR,LIFTED,BUMPERS,NAV
Condition:	Pre-Owned
Body:	Pickup Truck
Exterior:	Blue
Engine:	ENGINE: 3.0L V6 TURBO DIESEL W/ESS G3
Interior:	Black Leather
Transmission:	TRANSMISSION: 8-SPEED AUTOMATIC (8HP75)
Mileage:	53
Drivetrain:	4 Wheel Drive
Economy:	City 16 / Highway 22

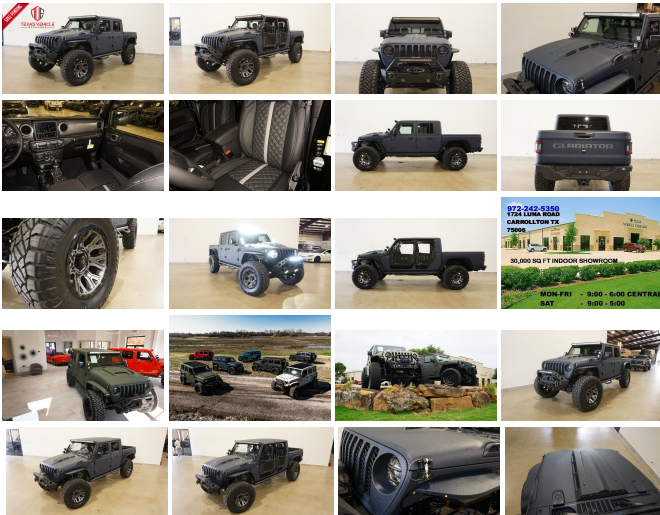
NATION WIDE FINANCING

SUBMIT CREDIT APP [WWW.TVEAUTO.COM](https://www.tveauto.com)

OR CALL 972-242-5350

"FERRARI NART BLUE EDITION"

CUSTOM BUILT **KEVLAR** 2023 JEEP
GLADIATOR SPORT 4X4 WITH 26S
PACKAGE



UPGRADES INCLUDE:

- * FERRARI NART BLUE KEVLAR COATING WITH ANTHRACITE ACCENTS
- * 3.0L V6 TURBO DIESEL ENGINE WITH START STOP
- * CUSTOM ALEA BLACK LEATHER WITH SILVER STITCHING
- * HEATED FRONT SEATS
- * FACTORY REMOTE START
- * POPULAR EQUIPMENT PACKAGE
- * ACTIVE SAFETY GROUP
- * FACTORY 8.4 INCH TOUCH SCREEN NAVIGATION WITH HD AM/FM/SIRIUS STEREO & ALPINE PREMIUM AUDIO SYSTEM
- * FACTORY BACK-UP CAMERA
- * U-CONNECT
- * 4 BODY ARMOR TRAIL DOORS & RECON MIRRORS
- * DV8 OFF ROAD FS-25 STUBBY FRONT BUMPER WITH LED LIGHT BAR & LED FOGLIGHTS
- * FRONT D-RINGS & ISOLATORS (ANTHRACITE)
- * SMITTYBILT NEW GEN 3 "X20" 10,000 LB WATERPROOF AND WIRELESS CONTROL WINCH WITH SYNTHETIC ROPE
- * FACTOR 55 PROLINK (BLACK)
- * FACTORY MESH GRILLE PAINTED (ANTHRACITE)
- * FACTORY LED HEADLIGHTS
- * RUGGED RIDGE BLACK HEADLIGHT GUARDS
- * NEW JT CUSTOM VENTED HOOD
- * DRAKE OFF ROAD HOOD LATCHES

- * DV8 OFF ROAD JT SLIM STEEL FENDER FLARES
- * DV8 OFF ROAD FRONT & REAR INNER FENDERS
- * TERAFLX 3.5" SUSPENSION LIFT KIT WITH TERAFLX SPORT CONTROL ARMS & TERAFLX FALCON SHOCKS
- * TERAFLX FALCON STABILIZER KIT
- * MOPAR AUXILIARY SWITCH BANK KIT
- * 50" LED LIGHT BAR AND 4 RIGID INDUSTRIES DUALY D2 LED PILLAR LIGHTS
- * SMITTYBILT BLACK TUBULAR STEPS
- * SPRAY IN BEDLINER
- * ORACLE LED TAIL LIGHTS
- * DV8 OFF ROAD REAR BUMPER WITH REAR PARK DISTANCE SENSORS
- * ALL WEATHER FLOOR MATS
- * TAZER JL PROGRAMMER WITH SPEEDOMETER CALIBRATION
- * 20" FUEL MATTE GUNMETAL WITH BLACK RING "TRACTION" WHEELS
- * BRAND NEW NITTO RIDGE GRAPPLER 38X13.50R/20 TIRES

WE BUILD EVERY JEEP WITH PRIDE! DO NOT HESITATE TO CALL US WITH THIS JEEP BUILD. WE CAN MAKE CHANGES TO THIS JEEP BUILD OR CUSTOM BUILD ANY JEEP TO YOUR PREFERENCE. GIVE US A CALL @ 972-242-5350 OR STOP BY FOR A TEST DRIVE. 1724 LUNA RD IN CARROLLTON - 2 MILES NORTH OF 635.

Our Location :



2023 Jeep Gladiator Sport 4X4 DIESEL,DUPONT KEVLAR,LIFTED,BUMPERS,NAV
Texas Vehicle Exchange - 972-242-5350 - View this car on our website at veauto.com/7190028/ebrochure

Installed Options

Interior

- 6-Way Driver Seat -inc: Manual Recline, Height Adjustment, Fore/Aft Movement and Manual Lumbar Support
- Apple CarPlay- Cloth Low-Back Bucket Seats
- Front Seats w/Cloth Back Material and Manual Driver Lumbar
- Full Carpet Floor Covering -inc: Carpet Front And Rear Floor Mats
- Gauges -inc: Speedometer, Odometer, Engine Coolant Temp, Tachometer, Engine Hour Meter, Trip Odometer and Trip Computer
- Google Android Auto- Manual Air Conditioning
- Proximity Key For Push Button Start Only - Trip Computer- 2 12V DC Power Outlets
- 2 Seatback Storage Pockets
- 4-Way Passenger Seat -inc: Manual Recline and Fore/Aft Movement
- 60-40 Folding Split-Bench Front Facing Fold Forward Seatback Cloth Rear Seat
- Air Filtration- Analog Appearance- Compass- Cruise Control w/Steering Wheel Controls
- Day-Night Rearview Mirror- Delayed Accessory Power- Fade-To-Off Interior Lighting
- Front And Rear Map Lights- Front Center Armrest w/Storage
- Full Floor Console w/Locking Storage and 2 12V DC Power Outlets
- HVAC -inc: Console Ducts- Illuminated Front Cupholder- Illuminated Rear Cupholder
- Instrument Panel Bin, Dashboard Storage, Driver / Passenger And Rear Door Bins
- Integrated Center Stack Radio
- Interior Trim -inc: Metal-Look Instrument Panel Insert and Metal-Look Console Insert
- Locking Glove Box
- Manual Adjustable Front Head Restraints and Foldable Rear Head Restraints
- Manual Tilt/Telescoping Steering Column- Outside Temp Gauge
- Redundant Digital Speedometer- Sentry Key Immobilizer- Systems Monitor
- USB Host Flip- Urethane Gear Shifter Material
- Vanity w/Driver And Passenger Auxiliary Mirror

Exterior

Option Packages

Factory Installed Packages

ENGINE: 3.0L V6 TURBO DIESEL W/ESS G3	
-inc: ABS 4-Wheel HD Disc Brakes w/Front FNC, Auxiliary Battery, Selective Catalytic Reduction (Urea), Anti-Spin Differential Rear Axle, Non-Lock Fuel Cap w/Discriminator, Gray EcoDiesel Badge, Supplemental Heater, 19 Gallon Fuel Tank, Tires: 245/75R17 BSW A/T Dueler, Stop-Start Dual Battery System, GVWR: 6,350 lbs	\$4,150
TRANSMISSION: 8-SPEED AUTOMATIC (8HP75)	
-inc: Transmission Skid Plate, Selec-Speed Control	\$2,500
8.4" RADIO & PREMIUM AUDIO GROUP	
-inc: SiriusXM Radio Service, SiriusXM Traffic Plus, Radio: Uconnect 4C Nav w/8.4" Display, Rear View Auto Dim Mirror, Console Bin Task Light, 5-Year SiriusXM Travel Link Service, GPS Navigation, 5-Year SiriusXM Traffic Service, 4G LTE Wi-Fi Hot Spot, Media Hub w/2 Charge Only USBs, 8.4" Touchscreen Display, Off-Road Info Pages, Alpine Premium Audio System, 220 Amp Alternator, SiriusXM Satellite Radio, 400W Inverter, HD Radio, Air Conditioning w/Auto Temp Control, 1-Year SiriusXM Guardian Trial, SiriusXM Travel Link, Emergency/Assistance Call, 115V Auxiliary Power Outlet	\$2,295
AUXILIARY SWITCH GROUP	
-inc: 700 Amp Maintenance Free Battery, Auxiliary Switches	\$495

- Black Front Bumper w/2 Tow Hooks- Black Rear Bumper w/1 Tow Hook
- Front Fog Lamps- Manual Convertible Top w/Fixed Roll-Over Protection
- Wheels: 17" x 7.5" Tech Silver Aluminum
- Aero-Composite Halogen Headlamps w/Delay-Off- Black Door Handles
- Black Fender Flares- Black Side Windows Trim- Body-Colored Grille- Clearcoat Paint
- Full-Size Spare Tire Stored Underbody w/Crankdown- Galvanized Steel/Aluminum Panels
- Regular Box Style- Removable Rear Window- Steel Spare Wheel
- Tailgate Rear Cargo Access- Tires: 245/75R17 H/T- Variable Intermittent Wipers

Safety

- 6-Way Driver Seat -inc: Manual Recline, Height Adjustment, Fore/Aft Movement and Manual Lumbar Support
- Apple CarPlay- Cloth Low-Back Bucket Seats
- Front Seats w/Cloth Back Material and Manual Driver Lumbar
- Full Carpet Floor Covering -inc: Carpet Front And Rear Floor Mats
- Gauges -inc: Speedometer, Odometer, Engine Coolant Temp, Tachometer, Engine Hour Meter, Trip Odometer and Trip Computer
- Google Android Auto- Manual Air Conditioning
- Proximity Key For Push Button Start Only - Trip Computer- 2 12V DC Power Outlets
- 2 Seatback Storage Pockets
- 4-Way Passenger Seat -inc: Manual Recline and Fore/Aft Movement
- 60-40 Folding Split-Bench Front Facing Fold Forward Seatback Cloth Rear Seat
- Air Filtration- Analog Appearance- Compass- Cruise Control w/Steering Wheel Controls
- Day-Night Rearview Mirror- Delayed Accessory Power- Fade-To-Off Interior Lighting
- Front And Rear Map Lights- Front Center Armrest w/Storage
- Full Floor Console w/Locking Storage and 2 12V DC Power Outlets
- HVAC -inc: Console Ducts- Illuminated Front Cupholder- Illuminated Rear Cupholder
- Instrument Panel Bin, Dashboard Storage, Driver / Passenger And Rear Door Bins
- Integrated Center Stack Radio
- Interior Trim -inc: Metal-Look Instrument Panel Insert and Metal-Look Console Insert
- Locking Glove Box
- Manual Adjustable Front Head Restraints and Foldable Rear Head Restraints
- Manual Tilt/Telescoping Steering Column- Outside Temp Gauge
- Redundant Digital Speedometer- Sentry Key Immobilizer- Systems Monitor
- USB Host Flip- Urethane Gear Shifter Material
- Vanity w/Driver And Passenger Auxiliary Mirror

Mechanical

- 4-Wheel Disc Brakes w/4-Wheel ABS, Front And Rear Vented Discs, Brake Assist and Hill Hold Control
- Class II Towing Equipment -inc: Hitch and Trailer Sway Control
- Engine: 3.6L V6 24V VVT UPG I w/ESS - Transmission: 6-Speed Manual
- 1700# Maximum Payload- 180 Amp Alternator- 22 Gal. Fuel Tank- 3 Skid Plates
- 3.73 Rear Axle Ratio- 50 State Emissions
- 650CCA Maintenance-Free Battery w/Run Down Protection- Auto Locking Hubs
- Brake Actuated Limited Slip Differential - Electro-Hydraulic Power Assist Steering
- Engine Auto Stop-Start Feature- Engine Oil Cooler- Front And Rear Anti-Roll Bars
- GVWR: 6,305 lbs- HD Shock Absorbers- Leading Link Front Suspension w/Coil Springs
- Manual Transfer Case- Normal Duty Plus Suspension- Part-Time Four-Wheel Drive
- Single Stainless Steel Exhaust- Solid Axle Rear Suspension w/Coil Springs
- Trailer Wiring Harness

POPULAR EQUIPMENT PACKAGE

-inc: Convenience Group, Universal Garage Door Opener, Daytime Running Lamp System, Trailer Tow Package, Trailer Hitch Zoom, Class IV Receiver Hitch, Heavy Duty Engine Cooling, 240 Amp Alternator, Black 3-Piece Hard Top, Freedom Panel Storage Bag, Rear Window Defroster, Rear Sliding Window

\$1,895

SAFETY GROUP

-inc: ParkSense Rear Park Assist System, Blind Spot & Cross Path Detection, LED Taillamps

\$1,395

QUICK ORDER PACKAGE 26S SPORT S

-inc: Engine: 3.0L V6 Turbo Diesel w/ESS G3, Transmission: 8-Speed Automatic (8HP75), Speed Sensitive Power Locks, Automatic Headlamps, Deep Tint Sunscreen Windows, Front 1-Touch Down Power Windows, Sport S, Power Heated Mirrors, Premium Wrapped Steering Wheel, Security Alarm, Power Tailgate Lock, Remote Keyless Entry, Sun Visors w/Illuminated Vanity Mirrors

\$3,400

Option Packages Total

\$16,130

Texas Vehicle Exchange

tveauto.com

972-242-5350

1724 Luna Road

Carrollton, TX 75006

© 2024 AutoRevo - All rights reserved. - Powered by AutoRevo