

2016 Jeep Compass High Altitude Edition

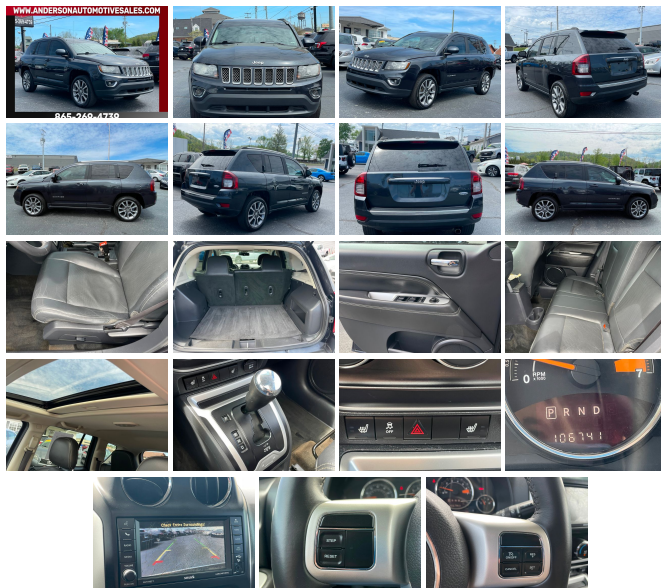
View this car on our website at andersonautomotivesales.com/7189371/ebrochure



Our Price **\$11,495**

Specifications:

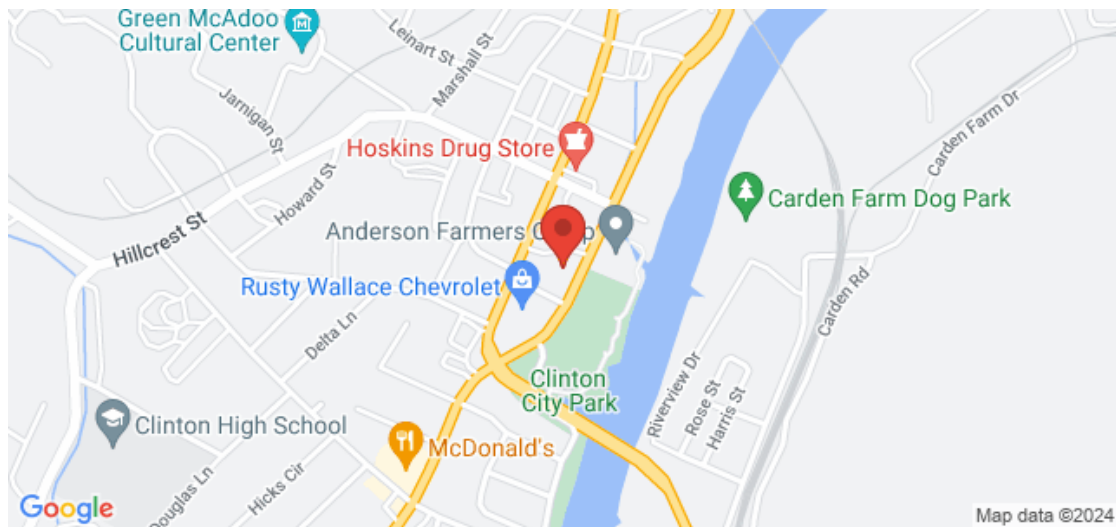
Year:	2016
VIN:	1C4NJCEA9GD561886
Make:	Jeep
Stock:	A1227
Model/Trim:	Compass High Altitude Edition
Condition:	Pre-Owned
Body:	SUV
Exterior:	GRAY
Engine:	ENGINE: 2.0L I4 DOHC 16V DUAL VVT
Interior:	BLACK
Transmission:	CVT w/OD
Mileage:	106,703
Drivetrain:	Front Wheel Drive
Economy:	City 22 / Highway 26



2016 Jeep Compass High Altitude Edition

Anderson Automotive Sales - 865-269-4739 - View this car on our website at andersonautomotivesales.com/7189371/ebrochure

Our Location :



2016 Jeep Compass High Altitude Edition

Anderson Automotive Sales - 865-269-4739 - View this car on our website at andersonautomotivesales.com/7189371/ebrochure

Installed Options

Interior

- Power Rear Windows and Fixed 3rd Row Windows
- Remote Keyless Entry w/Integrated Key Transmitter, Illuminated Entry and Panic Button
- Manual Air Conditioning- Power 1st Row Windows w/Driver 1-Touch Down
- Power Door Locks w/Autolock Feature- 2-Way Driver Seat -inc: Manual Recline
- 4-Way Passenger Seat -inc: Manual Recline and Fore/Aft Movement
- 60-40 Folding Bench Front Facing Manual Reclining Fold Forward Seatback Rear Seat
- Manual Tilt Steering Column
- Gauges -inc: Speedometer, Odometer, Engine Coolant Temp, Tachometer and Trip Odometer
- Voice Recorder- Leather/Metal-Look Steering Wheel- Illuminated Front Cupholder
- Rear Cupholder- 1 12V DC Power Outlet- Cruise Control w/Steering Wheel Controls
- HVAC -inc: Underseat Ducts- Glove Box- Driver Foot Rest
- Interior Trim -inc: Chrome Instrument Panel Insert, Metal-Look Console Insert and Chrome Interior Accents
- Full Cloth Headliner- Urethane Gear Shifter Material
- Day-Night Auto-Dimming Rearview Mirror- Driver And Passenger Visor Vanity Mirrors
- Full Floor Console w/Covered Storage, 1 12V DC Power Outlet and 1 120V AC Power Outlet
- Front Map Lights- Fade-To-Off Interior Lighting
- Full Carpet Floor Covering -inc: Carpet Front And Rear Floor Mats - Carpet Floor Trim
- Cargo Space Lights- Instrument Panel Bin, Driver / Passenger And Rear Door Bins
- Delayed Accessory Power- Outside Temp Gauge- Analog Appearance
- Driver And Passenger Heated-Cushion, Driver And Passenger Heated-Seatback
- Manual Anti-Whiplash Adjustable Front Head Restraints and Fixed Rear Head Restraints
- Sliding Front Center Armrest w/Storage- Manual Driver Lumbar Adjust
- Sentry Key Immobilizer- 1 12V DC Power Outlet and 1 120V AC Power Outlet
- Air Filtration

Exterior

Option Packages

Factory Installed Packages

ENGINE: 2.0L I4 DOHC 16V DUAL VVT

- Aluminum Wheels- Tailgate/Rear Door Lock Included w/Power Door Locks
- Wheels: 17" x 6.5" Granite Painted Pocket - Tires: P215/60R17 BSW AS Touring
- Steel Spare Wheel- Compact Spare Tire Mounted Inside Under Cargo- Clearcoat Paint
- Front Bumper w/Black Rub Strip/Fascia Accent
- Step Bumper w/Black Rub Strip/Fascia Accent- Black Bodyside Cladding
- Black Side Windows Trim and Black Front Windshield Trim - Body-Colored Door Handles
- Body-Colored Power Heated Side Mirrors w/Manual Folding
- Fixed Rear Window w/Fixed Interval Wiper and Defroster- Deep Tinted Glass
- Variable Intermittent Wipers- Fully Galvanized Steel Panels- Lip Spoiler- Chrome Grille
- Liftgate Rear Cargo Access- Auto On/Off Aero-Composite Halogen Headlamps
- Front Fog Lamps- LED Brakelights

Safety

- Power Rear Windows and Fixed 3rd Row Windows
- Remote Keyless Entry w/Integrated Key Transmitter, Illuminated Entry and Panic Button
- Manual Air Conditioning- Power 1st Row Windows w/Driver 1-Touch Down
- Power Door Locks w/Autolock Feature- 2-Way Driver Seat -inc: Manual Recline
- 4-Way Passenger Seat -inc: Manual Recline and Fore/Aft Movement
- 60-40 Folding Bench Front Facing Manual Reclining Fold Forward Seatback Rear Seat
- Manual Tilt Steering Column
- Gauges -inc: Speedometer, Odometer, Engine Coolant Temp, Tachometer and Trip Odometer
- Voice Recorder- Leather/Metal-Look Steering Wheel- Illuminated Front Cupholder
- Rear Cupholder- 1 12V DC Power Outlet- Cruise Control w/Steering Wheel Controls
- HVAC -inc: Underseat Ducts- Glove Box- Driver Foot Rest
- Interior Trim -inc: Chrome Instrument Panel Insert, Metal-Look Console Insert and Chrome Interior Accents
- Full Cloth Headliner- Urethane Gear Shifter Material
- Day-Night Auto-Dimming Rearview Mirror- Driver And Passenger Visor Vanity Mirrors
- Full Floor Console w/Covered Storage, 1 12V DC Power Outlet and 1 120V AC Power Outlet
- Front Map Lights- Fade-To-Off Interior Lighting
- Full Carpet Floor Covering -inc: Carpet Front And Rear Floor Mats - Carpet Floor Trim
- Cargo Space Lights- Instrument Panel Bin, Driver / Passenger And Rear Door Bins
- Delayed Accessory Power- Outside Temp Gauge- Analog Appearance
- Driver And Passenger Heated-Cushion, Driver And Passenger Heated-Seatback
- Manual Anti-Whiplash Adjustable Front Head Restraints and Fixed Rear Head Restraints
- Sliding Front Center Armrest w/Storage- Manual Driver Lumbar Adjust
- Sentry Key Immobilizer- 1 12V DC Power Outlet and 1 120V AC Power Outlet
- Air Filtration

Mechanical

- Transmission: Continuously Variable Transaxle II -inc: AutoStick Automatic Transmission, Tip Start
- Transmission w/Autostick Sequential Shift Control- Engine: 2.0L I4 DOHC 16V Dual VVT
- 3.65 Axle Ratio- GVWR: 4,435 lbs- 50-State Emissions- Front-Wheel Drive
- 60-Amp/Hr 525CCA Maintenance-Free Battery w/Run Down Protection
- 120 Amp Alternator- 925# Maximum Payload- Gas-Pressurized Shock Absorbers
- Front And Rear Anti-Roll Bars- Touring Suspension- Hydraulic Power-Assist Steering
- 13.6 Gal. Fuel Tank- Single Stainless Steel Exhaust
- Strut Front Suspension w/Coil Springs- Multi-Link Rear Suspension w/Coil Springs
- Front Disc/Rear Drum Brakes w/4-Wheel ABS, Front Vented Discs and Brake Assist



andersonautomotivesales.com

865-269-4739

135 S Charles G Seivers Blvd

Clinton, TN 37716

© 2024 AutoRevo - All rights reserved. - Powered by AutoRevo

