

# 2011 Mercedes-Benz CL 63 AMG - P2 pkg - Service Records

**SALES DEPARTMENT (310) 990 0770**

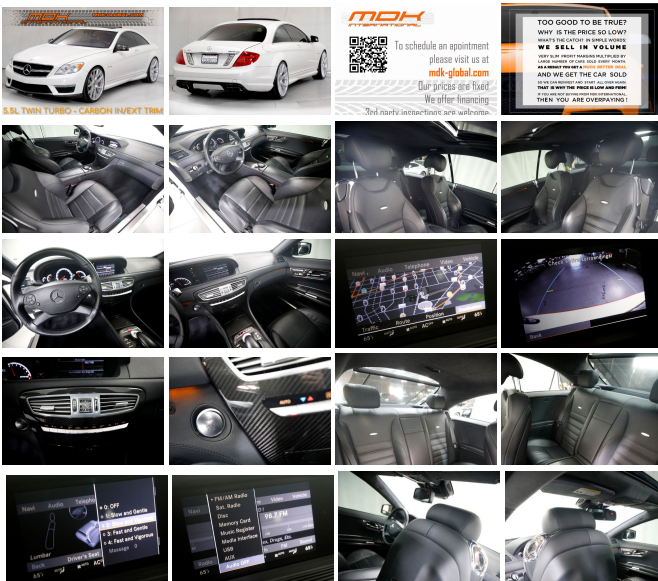
View this car on our website at [mdk-global.com/7188454/ebrochure](http://mdk-global.com/7188454/ebrochure)



Our Price **\$31,990**

## Specifications:

<b>Year:</b>	2011
<b>VIN:</b>	WDDEJ7EB6BA028054
<b>Make:</b>	Mercedes-Benz
<b>Model/Trim:</b>	CL 63 AMG - P2 pkg - Service Records
<b>Condition:</b>	Pre-Owned
<b>Body:</b>	Coupe
<b>Exterior:</b>	Diamond White Metallic
<b>Engine:</b>	5.5L DOHC bi-turbo 32-valve V8 AMG engine
<b>Interior:</b>	Black Leather
<b>Transmission:</b>	Automatic w/OD
<b>Mileage:</b>	52,888
<b>Drivetrain:</b>	Rear Wheel Drive
<b>Economy:</b>	City 11 / Highway 18



- \* Diamond white metallic over black Nappa leather
- \* If you are reading this description you probably know how rare these cars are - especially 5.5L Twin Turbo powered CL - older 6.2L NA V8 had way too many issues - these newer ones are way better!
- \* 5.5L Twin Turbo V8 = 536hp
- \* Keyless GO
- \* Heated / cooled seats
- \* Carbon fiber interior trim
- \* Carbon fiber mirrors and lower front bumper splitter
- \* Back up camera
- \* Night vision
- \* 22" Blaque Diamond Flow Formed F18 wheels
- \* Massage seats
- \* Clean title
- \* Carfax certified
- \* Lots of service records per Carfax report

---

**BY APPOINTMENT ONLY**

**OUR PRICES ARE FIRM**

- Financing available
- Warranties available
- Third party inspections are welcome
- Trade-ins are welcome
- We buy cars and pay finders free
- Nationwide door-to-door delivery options

For more information, please see our [FAQ](#) You can also schedule an appointment / apply for financing / check availability on our website at:

[mdk-global.com](http://mdk-global.com)

---

2011 Mercedes-Benz CL 63 AMG - P2 pkg - Service Records

MDK International - (310) 990 0770 - View this car on our website at [mdk-global.com/7188454/ebrochure](http://mdk-global.com/7188454/ebrochure)

## Vehicle History Report : as Of 04/25/2024



### Snapshot

2011 MERCEDES-BENZ CL-CLASS CL 63 AMG



Damage reported: minor damage



MINOR MODERATE SEVERE

22 Service history records



5 Previous owners



Types of owners: Corporate, Personal



52,900 Last reported odometer reading



**FREE CARFAX Report**

See the full CARFAX Report for additional information

\*carfax Snapshot is a reflection of available information on the date the report was pulled. carfax is constantly being updated with new information and is subject to change at any time.

## Our Location :



2011 Mercedes-Benz CL 63 AMG - P2 pkg - Service Records

MDK International - (310) 990 0770 - View this car on our website at [mdk-global.com/7188454/ebrochure](http://mdk-global.com/7188454/ebrochure)

## Installed Options

### Interior

- 4-way pwr tilt/telescopic steering column w/memory- AMG premium leather seat trim
- AMG premium leather-wrapped sport steering wheel w/shift paddles/audio & multi-function display control/programmable easy-exit feature/mounted shift buttons
- COMAND cockpit management & data system -inc: 40GB hard drive-based navigation system, audio status, 8" color LCD screen, hands-free communication system controls, driver-programmable settings for instruments, lighting, vehicle, convenience feature
- Cruise control- GPS navigation system w/20-GB hard drive- Keyless-Go
- Multi-function display in instrument cluster -inc: trip computer, exterior temp gauge, maintenance system, digital speedometer, reminder & malfunction messages, audio status, navigation route guidance, tire pressure
- Pwr trunk w/button on driver door & trunk lid & SmartKey
- SmartKey infrared remote w/windows & sunroof open/close, active ventilated seats on
- SmartKey system w/remote central locking system/anti-theft engine immobilizer/driver-programmable user-recognition features/drive away auto locking
- (2) pwr retractable rear head restraints w/manual fore-aft adjust
- 14-way pwr drive-dynamic multi-contour front AMG sport seats w/3-position memory/4-level massage/adjustable side bolsters/adjustable lumbar support
- AMG aerodynamic bodywork- AMG gauges w/AMG racetimer in digital display
- Active ventilated front seats w/heating feature- Adjustable ambient lighting
- Alcantara headliner- Anti-theft alarm system- Auto-dimming rearview mirror
- Dual illuminated vanity mirrors
- Dual-zone automatic climate control -inc: electrostatic dust/pollen filter,

## Option Packages

### Factory Installed Packages

PREMIUM 2 PKG	
-inc: rearview monitor, night view assist	\$2,200
SPLITVIEW FRONT ENTERTAINMENT SYSTEM	
-inc: remote control, wireless headphones	\$710
CARBON FIBER INTERIOR TRIM	
DIAMOND WHITE METALLIC	
	\$795
Option Packages Total	\$3,705

- humidity/dewpoint/sun sensors, tunnel mode w/1-touch closing of all windows
- Electronic parking brake- Integrated HomeLink compatible 3-button garage door control
- Locator lighting
- Mercedes-Benz maintenance system plus display -inc: distance remaining to next maintenance, type of service due, reminders, brake-pad wear
- Night security illumination- Pwr rear window sunshade w/1-touch express up/down
- Pwr windows
- Rear window defroster w/auto-shutoff based on time/driving speed/exterior temp
- Roll-over sensor- Stainless-steel door sill trim w/AMG insignia

---

## Exterior

- 20" twin AMG 5-spoke aluminum wheels
- Bi-xenon high-intensity discharge headlamps -inc: auto level control, heated headlamp washers, selectable light-sensing auto-on headlamps, auto lamp substitution, active curve illumination
- Halogen front foglamps- Laminated infrared-reflecting & noise insulating glass
- P255/35ZR20 front & P275/45ZR18 rear high performance tires
- Programmable pwr folding heated mirrors w/memory/auto-dimming driver mirror/integrated LED turn signals
- Pwr tilt/slide tinted glass sunroof w/1-touch open & close/memory - Rear foglamp
- Variable intermittent rain-sensing dual aero-blade windshield wipers

---

## Safety

- 4-way pwr tilt/telescopic steering column w/memory- AMG premium leather seat trim
- AMG premium leather-wrapped sport steering wheel w/shift paddles/audio & multi-function display control/programmable easy-exit feature/mounted shift buttons
- COMAND cockpit management & data system -inc: 40GB hard drive-based navigation system, audio status, 8" color LCD screen, hands-free communication system controls, driver-programmable settings for instruments, lighting, vehicle, convenience feature
- Cruise control- GPS navigation system w/20-GB hard drive- Keyless-Go
- Multi-function display in instrument cluster -inc: trip computer, exterior temp gauge, maintenance system, digital speedometer, reminder & malfunction messages, audio status, navigation route guidance, tire pressure
- Pwr trunk w/button on driver door & trunk lid & SmartKey
- SmartKey infrared remote w/windows & sunroof open/close, active ventilated seats on
- SmartKey system w/remote central locking system/anti-theft engine immobilizer/driver-programmable user-recognition features/drive away auto locking
- (2) pwr retractable rear head restraints w/manual fore-aft adjust
- 14-way pwr drive-dynamic multi-contour front AMG sport seats w/3-position memory/4-level massage/adjustable side bolsters/adjustable lumbar support
- AMG aerodynamic bodywork- AMG gauges w/AMG racetimer in digital display
- Active ventilated front seats w/heating feature- Adjustable ambient lighting
- Alcantara headliner- Anti-theft alarm system- Auto-dimming rearview mirror
- Dual illuminated vanity mirrors
- Dual-zone automatic climate control -inc: electrostatic dust/pollen filter, humidity/dewpoint/sun sensors, tunnel mode w/1-touch closing of all windows
- Electronic parking brake- Integrated HomeLink compatible 3-button garage door control
- Locator lighting
- Mercedes-Benz maintenance system plus display -inc: distance remaining to next maintenance, type of service due, reminders, brake-pad wear
- Night security illumination- Pwr rear window sunshade w/1-touch express up/down
- Pwr windows
- Rear window defroster w/auto-shutoff based on time/driving speed/exterior temp
- Roll-over sensor- Stainless-steel door sill trim w/AMG insignia

---

## Mechanical

- AIRMATIC air suspension w/adaptive damping system
- AMG modified Active Body Control (ABC) -inc: coil spring & electronically controlled hydraulic cylinder w/gas-pressurized shock absorber at each wheel, auto all-wheel level control, driver-selectable ride-height control, auto speed-sensitive lowering
- Speed-sensitive pwr rack & pinion steering
- 4-wheel high performance dual-piston sliding-caliper AMG pwr disc brakes
- 5.5L DOHC bi-turbo 32-valve V8 AMG engine
- 7-speed automatic driver-adaptive transmission w/OD/AMG SpeedShift/touch shift
- AMG sport exhaust system w/dual twin tailpipes
- Independent 4-link front suspension w/anti-lift control/stabilizer bar
- Independent multi-link rear suspension w/anti-squat/anti-dive system- Rear wheel drive

---

MDK International

[mdk-global.com](http://mdk-global.com)

(310) 990 0770

2420 N. Ontario St.

Burbank, California 91504

© 2024 AutoRevo - All rights reserved. - Powered by [AutoRevo](#)