

2010 Toyota Prius II

View this car on our website at mdk-global.com/7188388/ebrochure

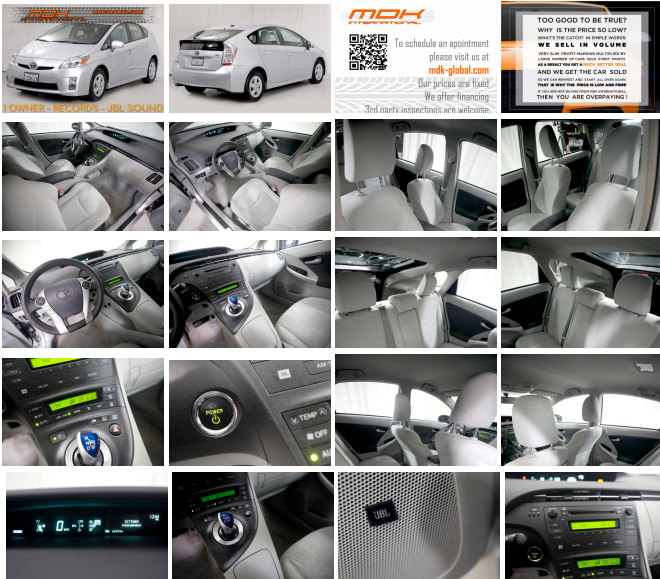


Our Price **\$12,990**

Specifications:

Year:	2010
VIN:	JTDKN3DU3A0216712
Make:	Toyota
Model/Trim:	Prius II
Condition:	Pre-Owned
Body:	Sedan
Exterior:	Classic Silver Metallic
Engine:	1.8L DOHC 16-valve VVT-i Atkinson-cycle I4 hybrid engine
Interior:	Misty Gray Cloth
Transmission:	CVT
Mileage:	47,058
Drivetrain:	Front Wheel Drive
Economy:	City 51 / Highway 48

- * Only 1 previous owner - Carfax shows 2 due to relocation
- * Catalytic converter anti-theft shield installed
- * JBL Premium sound
- * Smart key
- * Service records available per Carfax report
- * Please note, some MINOR damage was reported to Carfax back in 2022 - third party inspections are welcome
- * Clean title
- * Carfax certified



BY APPOINTMENT ONLY

OUR PRICES ARE FIRM

- Financing available
- Warranties available
- Third party inspections are welcome
- Trade-ins are welcome
- We buy cars and nav finders free

- We buy cars and pay much less
- Nationwide door-to-door delivery options

For more information, please see our [FAQ](#) You can also schedule an appointment / apply for financing / check availability on our website at:

mdk-global.com

2010 Toyota Prius II

MDK International - 310-990-0770 - View this car on our website at mdk-global.com/7188388/ebrochure

CARFAX
Snapshot

2010 TOYOTA PRIUS II

Damage reported: minor damage

MINOR MODERATE SEVERE

10 Service history records

At least 1 open recall

2 Previous owners

47,237 Last reported odometer reading

FREE CARFAX Report

See the full CARFAX Report for additional information

*carfax Snapshot is a reflection of available information on the date the report was pulled. carfax is constantly being updated with new information and is subject to change at any time.

Our Location :

2010 Toyota Prius II

MDK International - 310-990-0770 - View this car on our website at mdk-global.com/7188388/ebrochure

Installed Options

Interior

- (2) 12V pwr outlets- (4) retractable assist grips
- 6-way adjustable drivers seat w/vertical adjustment- 60/40 split rear seat
- Active headrests- Adjustable front/rear headrests w/fold-forward rear headrests
- Air conditioning w/electric A/C compressor- Cargo area lamp
- Central instrument display -inc: digital speedometer, instant fuel consumption, fuel gauge, shift-lever indicator
- Cruise control- Driver door smart key entry system -inc: panic button, keyless entry
- Dual compartment glove box- Dual front sunvisors w/illuminated vanity mirrors
- Engine immobilizer- Fabric seat material- Front bucket seats
- Front center console w/sliding armrest -inc: storage compartment w/removable utility tray, wire-management feature, (2) cup holders
- Front seatback pockets- Illuminated entry w/step lamp
- Multi-information display -inc: energy monitor, fuel consumption history, hybrid system indicator, odometer w/twin tripmeters
- Overhead console w/maplights & shift illumination- Pwr door locks w/anti-lockout feature
- Pwr windows w/auto up/down- Rear dome light- Rear fold-down armrest w/(2) cup holders
- Rear window electric defogger w/timer- Retained accessory pwr
- Tilt/telescopic adjustable steering wheel w/Touch Tracer Display -inc: audio controls, HVAC controls

Exterior

- 15" 5-spoke aluminum alloy wheels w/wheel covers
- Auto-off multi-reflector projector headlamps- Color-keyed folding pwr heated mirrors
- High solar energy absorbing (HSEA) glass- Intermittent rear window wiper
- LED tail lamps- P195/65R15 all-season tires- Rear deck spoiler
- T135/80D16 compact spare tire- Tonneau cover w/clasp for under-floor storage
- Washer-linked variable intermittent windshield wipers

Safety

- (2) 12V pwr outlets- (4) retractable assist grips
- 6-way adjustable drivers seat w/vertical adjustment- 60/40 split rear seat
- Active headrests- Adjustable front/rear headrests w/fold-forward rear headrests
- Air conditioning w/electric A/C compressor- Cargo area lamp
- Central instrument display -inc: digital speedometer, instant fuel consumption, fuel gauge, shift-lever indicator
- Cruise control- Driver door smart key entry system -inc: panic button, keyless entry
- Dual compartment glove box- Dual front sunvisors w/illuminated vanity mirrors
- Engine immobilizer- Fabric seat material- Front bucket seats
- Front center console w/sliding armrest -inc: storage compartment w/removable utility tray, wire-management feature, (2) cup holders
- Front seatback pockets- Illuminated entry w/step lamp
- Multi-information display -inc: energy monitor, fuel consumption history, hybrid system indicator, odometer w/twin tripmeters
- Overhead console w/maplights & shift illumination- Pwr door locks w/anti-lockout feature
- Pwr windows w/auto up/down- Rear dome light- Rear fold-down armrest w/(2) cup holders
- Rear window electric defogger w/timer- Retained accessory pwr
- Tilt/telescopic adjustable steering wheel w/Touch Tracer Display -inc: audio controls, HVAC controls

Mechanical

- 1.8L DOHC 16-valve VVT-i Atkinson-cycle I4 hybrid engine
- Continuously variable transmission (ECVT)- Electric pwr assisted rack & pinion steering
- Electronic throttle control system w/intelligence (ETCS-i) -inc: Eco, EV & power driving modes
- Front wheel drive
- Hybrid system -inc: sealed nickel-metal hydride battery, integrated permanent synchronous electric motor, integrated regenerative brake system
- Independent MacPherson strut suspension w/stabilizer bar- Push button ignition
- Torsion beam rear suspension- Ventilated front & solid rear pwr disc brakes

mdk-global.com

310-990-0770

2420 N. Ontario St.

Burbank, California 91504

© 2023 AutoRevo - All rights reserved. - Powered by AutoRevo