

2023 Ford Expedition XLT

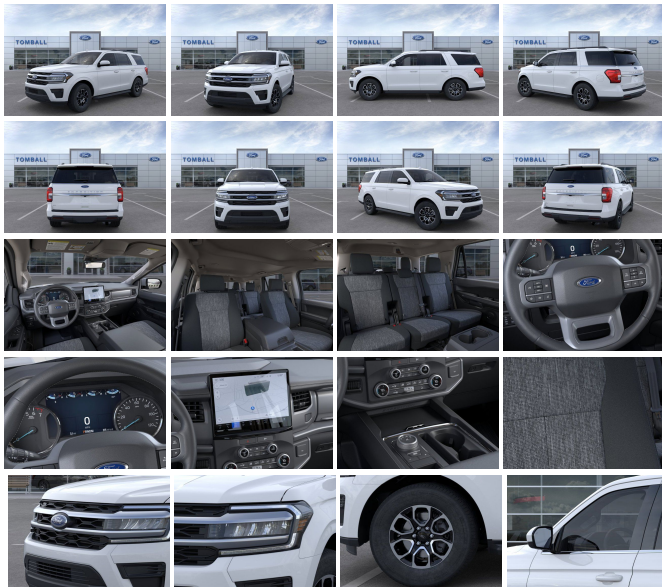
View this car on our website at askjorgelopez.com/7188357/ebrochure



Our Price **\$61,035**

Specifications:

Year:	2023
VIN:	1FMJU1H84PEA45315
Make:	Ford
Stock:	PEA45315
Model/Trim:	Expedition XLT
Condition:	New
Body:	SUV
Exterior:	OXFORD WHITE
Engine:	ENGINE: 3.5L ECOBOOST V6
Interior:	XLT CLOTH SEATS BLACK ONYX
Transmission:	Automatic w/OD
Mileage:	0
Drivetrain:	Rear Wheel Drive



"Take the worry out of buying with this dependable 2023 Ford Expedition. Tire Specific Low Tire Pressure Warning, Side Impact Beams, Reverse Sensing System Rear Parking Sensors, Restricted Driving Mode, Rear Child Safety Locks.*Fully-Loaded with Additional Options*ENGINE: 3.5L ECOBOOST V6 (STD), Window Grid Antenna, Wheels: 18" Machined-Face Aluminum -inc: magnetic-painted pockets, Vinyl Door Trim Insert, Trip Computer, Transmission: 10-Speed Automatic w/SelectShift, Transmission w/Driver Selectable Mode and Oil Cooler, Trailer Wiring Harness, Tracker System, Tires: P275/65R18 AT.* Stop By Today *Come in for a quick visit at Tomball Ford, 22702 Tomball Parkway, Tomball, TX 77375 to claim your Ford Expedition!"

2023 Ford Expedition XLT

Ask Jorge Lopez - 281-205-0352 - View this car on our website at askjorgelopez.com/7188357/ebrochure

Vehicle History Report : as Of 04/24/2024

CARFAX

Snapshot

2023 FORD EXPEDITION XLT



No accidents or damage reported to CARFAX



Well maintained vehicle



CARFAX 1-Owner vehicle



Personal vehicle



Last owned in Texas



2,599 Last reported odometer reading



FREE CARFAX Report

See the full CARFAX Report for additional information

*carfax Snapshot is a reflection of available information on the date the report was pulled. carfax is constantly being updated with new information and is subject to change at any time.

Our Location :



2023 Ford Expedition XLT

Ask Jorge Lopez - 281-205-0352 - View this car on our website at askjorgelopez.com/7188357/ebrochure

Installed Options

Interior

- 40-20-40 Folding Split-Bench Front Facing Manual Reclining Fold Forward Seatback Cloth Rear Seat w/Manual Fore/Aft
- Manual Tilt/Telescoping Steering Column
- Gauges -inc: Speedometer, Odometer, Voltmeter, Oil Pressure, Engine Coolant Temp, Tachometer, Trip Odometer and Trip Computer
- Power Rear Windows and Fixed 3rd Row Windows
- Fixed 60-40 Split-Bench Cloth 3rd Row Seat Front, Power Recline, Power Fold Into Floor, 3 Power and Adjustable Head Restraints
- Proximity Key For Push Button Start Only
- Remote Keyless Entry w/Integrated Key Transmitter, Illuminated Entry and Panic Button
- Cruise Control w/Steering Wheel Controls- Dual Zone Front Automatic Air Conditioning
- Rear HVAC w/Separate Controls
- Cloth Front Captain's Chairs -inc: 8-passenger seating, 8-way power driver seat (power function for tilt and lumbar, manual recline), 4-way manual passenger seat (fore/aft, recline, lumbar) and 2-way manually adjustable head restraints
- Full Carpet Floor Covering -inc: Carpet Front And Rear Floor Mats
- Smart Device Remote Engine Start- Integrated Navigation System w/Voice Activation
- Power 1st Row Windows w/Driver And Passenger 1-Touch Up/Down
- Power Door Locks w/Autolock Feature- Trip Computer- Perimeter Alarm- Immobilizer

Option Packages

Factory Installed Packages

ENGINE: 3.5L ECOBOOST V6

- Power Door Locks w/Autolock Feature- Trip Computer- Perimeter Alarm- Immobilizer
- Driver Seat- Passenger Seat- Leather Steering Wheel- Front Cupholder
- Rear Cupholder- Compass- Remote Releases -Inc: Keyfob Rear Window
- Garage Door Transmitter
- HVAC -inc: Underseat Ducts, Auxiliary Rear Heater and Headliner/Pillar Ducts
- Illuminated Locking Glove Box
- Interior Trim -inc: Metal-Look Console Insert and Metal-Look Interior Accents
- Full Cloth Headliner- Vinyl Door Trim Insert- Metal-Look Gear Shifter Material
- Driver And Passenger Visor Vanity Mirrors w/Driver And Passenger Illumination, Driver And Passenger Auxiliary Mirror
- Day-Night Auto-Dimming Rearview Mirror
- Full Floor Console w/Covered Storage, Mini Overhead Console w/Storage and 4 12V DC Power Outlets
- Front And Rear Map Lights- Fade-To-Off Interior Lighting- Carpet Floor Trim
- Cargo Space Lights- Tracker System
- Dashboard Storage, Driver / Passenger And Rear Door Bins - Delayed Accessory Power
- Systems Monitor- Outside Temp Gauge- Digital/Analog Appearance
- Seats w/Cloth Back Material- Foldable Rear Head Restraints- Front Center Armrest
- 4 12V DC Power Outlets- Air Filtration

Exterior

- Wheels: 18" Machined-Face Aluminum -inc: magnetic-painted pockets
- Body-Colored Power Heated Side Mirrors w/Manual Folding- Running Boards
- Tailgate/Rear Door Lock Included w/Power Door Locks
- Auto On/Off Aero-Composite Led Low/High Beam Auto High-Beam Daytime Running Lights Preference Setting Headlamps w/Delay-Off
- Tires: P275/65R18 AT- Steel Spare Wheel
- Full-Size Spare Tire Stored Underbody w/Crankdown- Clearcoat Paint
- Body-Colored Rear Step Bumper w/Gray Rub Strip/Fascia Accent
- Body-Colored Front Bumper w/Colored Rub Strip/Fascia Accent
- Stainless Steel Side Windows Trim and Black Front Windshield Trim
- Body-Colored Door Handles- Body-Colored Bodyside Cladding
- Flip-Up Rear Window w/Fixed Interval Wiper and Defroster- Deep Tinted Glass
- Speed Sensitive Variable Intermittent Wipers- Galvanized Steel/Aluminum Panels
- Lip Spoiler- Black Grille w/Chrome Surround- Liftgate Rear Cargo Access
- Roof Rack Rails Only- Perimeter/Approach Lights- Headlights-Automatic Highbeams

Safety

- 40-20-40 Folding Split-Bench Front Facing Manual Reclining Fold Forward Seatback Cloth Rear Seat w/Manual Fore/Aft
- Manual Tilt/Telescoping Steering Column
- Gauges -inc: Speedometer, Odometer, Voltmeter, Oil Pressure, Engine Coolant Temp, Tachometer, Trip Odometer and Trip Computer
- Power Rear Windows and Fixed 3rd Row Windows
- Fixed 60-40 Split-Bench Cloth 3rd Row Seat Front, Power Recline, Power Fold Into Floor, 3 Power and Adjustable Head Restraints
- Proximity Key For Push Button Start Only
- Remote Keyless Entry w/Integrated Key Transmitter, Illuminated Entry and Panic Button
- Cruise Control w/Steering Wheel Controls- Dual Zone Front Automatic Air Conditioning
- Rear HVAC w/Separate Controls
- Cloth Front Captain's Chairs -inc: 8-passenger seating, 8-way power driver seat (power function for tilt and lumbar, manual recline), 4-way manual passenger seat (fore/aft, recline, lumbar) and 2-way manually adjustable head restraints
- Full Carpet Floor Covering -inc: Carpet Front And Rear Floor Mats
- Smart Device Remote Engine Start- Integrated Navigation System w/Voice Activation
- Power 1st Row Windows w/Driver And Passenger 1-Touch Up/Down
- Power Door Locks w/Autolock Feature- Trip Computer- Perimeter Alarm- Immobilizer
- Driver Seat- Passenger Seat- Leather Steering Wheel- Front Cupholder
- Rear Cupholder- Compass- Remote Releases -Inc: Keyfob Rear Window
- Garage Door Transmitter
- HVAC -inc: Underseat Ducts, Auxiliary Rear Heater and Headliner/Pillar Ducts
- Illuminated Locking Glove Box
- Interior Trim -inc: Metal-Look Console Insert and Metal-Look Interior Accents
- Full Cloth Headliner- Vinyl Door Trim Insert- Metal-Look Gear Shifter Material
- Driver And Passenger Visor Vanity Mirrors w/Driver And Passenger Illumination, Driver And Passenger Auxiliary Mirror
- Day-Night Auto-Dimming Rearview Mirror
- Full Floor Console w/Covered Storage, Mini Overhead Console w/Storage and 4 12V DC Power Outlets
- Front And Rear Map Lights- Fade-To-Off Interior Lighting- Carpet Floor Trim
- Cargo Space Lights- Tracker System
- Dashboard Storage, Driver / Passenger And Rear Door Bins - Delayed Accessory Power
- Systems Monitor- Outside Temp Gauge- Digital/Analog Appearance

Systems Monitor - Outside Temp Gauge - Signal/Tray Appearance

- Seats w/Cloth Back Material- Foldable Rear Head Restraints- Front Center Armrest
- 4 12V DC Power Outlets- Air Filtration

Mechanical

- Transmission: 10-Speed Automatic w/SelectShift
 - Class IV Towing Equipment -inc: Hitch and Trailer Sway Control
 - 4-Wheel Disc Brakes w/4-Wheel ABS, Front And Rear Vented Discs, Brake Assist, Hill Hold Control and Electric Parking Brake
 - Engine: 3.5L EcoBoost V6- 3.31 Axle Ratio- GVWR: 7,200 lbs
 - 50 States Emissions System- Transmission w/Driver Selectable Mode and Oil Cooler
 - Rear-Wheel Drive- 72-Amp/Hr 675CCA Maintenance-Free Battery w/Run Down Protection
 - 150 Amp Alternator- Trailer Wiring Harness- 1750# Maximum Payload
 - Gas-Pressurized Shock Absorbers- Front And Rear Anti-Roll Bars
 - Electric Power-Assist Speed-Sensing Steering- 23.3 Gal. Fuel Tank
 - Single Stainless Steel Exhaust- Double Wishbone Front Suspension w/Coil Springs
 - Multi-Link Rear Suspension w/Coil Springs
-

Ask Jorge Lopez

askjorgelopez.com

281-205-0352

22702 Tomball Parkway

Tomball, TX 77375

© 2024 AutoRevo - All rights reserved. - Powered by AutoRevo