

2023 Ford Explorer Timberline

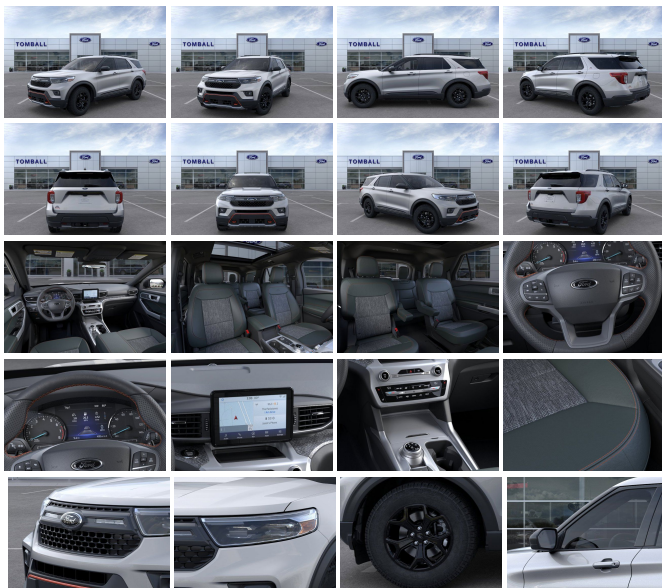
View this car on our website at askjorgelopez.com/7188327/ebrochure



Our Price **\$52,200**

Specifications:

Year:	2023
VIN:	1FMSK8JH7PGB16816
Make:	Ford
Stock:	GB16816
Model/Trim:	Explorer Timberline
Condition:	New
Body:	SUV
Exterior:	ICONIC SILVER METALLIC
Engine:	ENGINE: 2.3L ECOBOOST I-4
Interior:	ACTIVEX SEAT MATERIAL EBONY INTERIOR
Transmission:	Automatic w/OD
Mileage:	745
Drivetrain:	4 Wheel Drive
Economy:	City 19 / Highway 22



"Feel at ease with this reliable 2023 Ford Explorer. Tire Specific Low Tire Pressure Warning, Terrain Management System ABS And Driveline Traction Control, Side Impact Beams, Safety Canopy System Curtain 1st, 2nd And 3rd Row Airbags, Right Side Camera.*Fully-Loaded with Additional Options*TWIN PANEL MOONROOF -inc: remote control front windows (opens front windows from outside of the vehicle via the key fob), TRANSMISSION: 10-SPEED AUTOMATIC (STD), ICONIC SILVER METALLIC, FRONT LICENSE PLATE BRACKET, EQUIPMENT GROUP 800A, ENGINE: 2.3L ECOBOOST I-4 -inc: auto start-stop technology (STD), AUTO START-STOP REMOVAL, 4G LTE WI-FI HOTSPOT CREDIT, Wheels: 18" High Gloss Black-Painted Aluminum -inc: laser etched Timberline logo, Voice-Activated Touchscreen Navigation System -inc: pinch-to-zoom capability, SiriusXM Traffic and Travel Link, Note: SiriusXM Traffic and Travel Link includes a 5-year prepaid subscription, SiriusXM Traffic and Travel Link service is not available in Alaska or Hawaii, After your trial period ends, Sirius XM audio and data services each require a subscription sold separately, or as a package, by SiriusXM Radio Inc, See SiriusXM customer agreement for complete terms at www.siriusxm.com, All fees and programming subject to change, Trial subscriptions not available in Alaska and Hawaii.* Visit Us Today *A short visit to Tomball Ford located at 22702 Tomball Parkway, Tomball, TX 77375 can get you a dependable Explorer today!"

Our Location :



2023 Ford Explorer Timberline

Ask Jorge Lopez - 281-205-0352 - View this car on our website at askjorgelopez.com/7188327/ebrochure

Installed Options

Interior

- Bucket Front Seats w/Cloth Back Material
- Bucket Folding Captain Front Facing Heated Manual Reclining Fold Forward Seatback ActiveX Cloth/Leatherette Rear Seat w/Manual Fore/Aft
- Gauges -inc: Speedometer, Odometer, Engine Coolant Temp, Tachometer, Oil Level, Trip Odometer and Trip Computer
- Power Rear Windows and Fixed 3rd Row Windows
- Fixed 50-50 Bench ActiveX Cloth/Leatherette 3rd Row Seat Front, Manual Fold Into Floor, 2 Manual and Adjustable Head Restraints
- Remote Keyless Entry w/Integrated Key Transmitter, Illuminated Entry, Illuminated Ignition Switch and Panic Button
- Proximity Key For Doors And Push Button Start
- Voice Activated Dual Zone Front Automatic Air Conditioning
- Rear HVAC w/Separate Controls
- Heated ActiveX Trimmed Captain's Chairs -inc: heathered cloth inserts, deep tangerine stitching and Timberline logo, 10-way power driver (power function for tilt, lumbar and recline), 8-way power passenger (power function for lumbar and recline) and 2-way manually adjustable driver and front passenger head restraints (2-way up/down when Dual-Headrest Rear Seat Entertainment System (50S) is ordered)
- Smart Device Remote Engine Start
- FOB Controls -inc: Cargo Access and Remote Engine Start
- FordPass Connect -inc: 4G LTE Wi-Fi hotspot connects up to 10 devices w/wireless data trial that begins upon AT&T activation and expires at the end of 3 months or when 3GB of data is used, whichever comes first, but cannot extend beyond the trial subscription period for remote features, To activate, go to www.att.com/ford, remotely start, lock and unlock vehicle, schedule specific times to remotely start vehicle, locate parked vehicle and check vehicle status (FordPass Connect, the Ford Pass App, and Complimentary Connected Services are required for remote features (see FordPass terms for details), Connected Service and features depend on compatible AT&T network availability, Evolving technology/cellular networks/vehicle capability may limit functionality and prevent operation of connected features, Connected services excludes Wi-Fi hotspot.), Note: Ford Telematics and data services prep included for fleet only: FordPass Connect 4G Wi-Fi modem provides data to support telematics and data services including but not limited to vehicle location, speed, idle time, fuel, vehicle diagnostics and maintenance alerts, Device enables

Option Packages

Factory Installed Packages

ENGINE: 2.3L ECOBOOST I-4
-inc: auto start-stop technology

telematics services through Ford or authorized providers, Activate at www.fleet.ford.com or call 833-FCS-Ford, (833-327-3673)

- Power 1st Row Windows w/Driver And Passenger 1-Touch Up/Down
- Power Door Locks w/Autolock Feature- Trip Computer- 8-Way Driver Seat
- 6-Way Passenger Seat
- Front Center Armrest and Rear Seat Mounted Armrest Outboard Only
- Manual Tilt/Telescoping Steering Column
- Sport Heated Leather/Metal-Look Steering Wheel- Front Cupholder- Rear Cupholder
- Compass- Remote Releases -Inc: Power Cargo Access- Keypad
- Cruise Control w/Steering Wheel Controls- Distance Pacing w/Traffic Stop-Go
- HVAC -inc: Underseat Ducts and Headliner/Pillar Ducts - Locking Glove Box
- Driver Foot Rest- Full Cloth Headliner- Leatherette Door Trim Insert
- Interior Trim -inc: Metal-Look Instrument Panel Insert, Metal-Look/Piano Black Door Panel Insert, Metal-Look Console Insert and Metal-Look Interior Accents
- Day-Night Rearview Mirror
- Driver And Passenger Visor Vanity Mirrors w/Driver And Passenger Illumination, Driver And Passenger Auxiliary Mirror
- Full Floor Console w/Covered Storage, Mini Overhead Console w/Storage and 4 12V DC Power Outlets
- Front And Rear Map Lights- Fade-To-Off Interior Lighting- Carpet Floor Trim
- Full Carpet Floor Covering -inc: Vinyl/Rubber Front And Rear Floor Mats
- Trunk/Hatch Auto-Latch- Cargo Area Concealed Storage- Cargo Net
- Cargo Space Lights
- Voice-Activated Touchscreen Navigation System -inc: pinch-to-zoom capability, SiriusXM Traffic and Travel Link, Note: SiriusXM Traffic and Travel Link includes a 5-year prepaid subscription, SiriusXM Traffic and Travel Link service is not available in Alaska or Hawaii, After your trial period ends, Sirius XM audio and data services each require a subscription sold separately, or as a package, by SiriusXM Radio Inc, See SiriusXM customer agreement for complete terms at www.siriusxm.com, All fees and programming subject to change, Trial subscriptions not available in Alaska and Hawaii
- Driver / Passenger And Rear Door Bins - Delayed Accessory Power- Systems Monitor
- Outside Temp Gauge- Analog Appearance- Redundant Digital Speedometer
- Manual Adjustable Rear Head Restraints- 2 Seatback Storage Pockets
- Driver And Passenger Heated-Cushion, Driver And Passenger Heated-Seatback
- Securilock Anti-Theft Ignition (pats) Immobilizer- Perimeter Alarm- Air Filtration
- 4 12V DC Power Outlets

Exterior

- Black Power Heated Side Mirrors w/Manual Folding
- Tailgate/Rear Door Lock Included w/Power Door Locks
- Autolamp Auto On/Off Aero-Composite Led Low/High Beam Auto High-Beam Daytime Running Lights Preference Setting Headlamps w/Delay-Off
- Wheels: 18" High Gloss Black-Painted Aluminum -inc: laser etched Timberline logo
- Tires: P265/65R18 AT BSW -inc: mini spare- Steel Spare Wheel
- Spare Tire Mounted Inside Under Cargo- Clearcoat Paint
- Body-Colored Rear Bumper w/Black Rub Strip/Fascia Accent
- Body-Colored Front Bumper w/Black Rub Strip/Fascia Accent, Colored Bumper Insert and 2 Tow Hooks
- Black Side Windows Trim, Black Front Windshield Trim and Black Rear Window Trim
- Body-Colored Door Handles
- Black Bodyside Insert, Black Bodyside Cladding and Black Wheel Well Trim
- Fixed Rear Window w/Fixed Interval Wiper, Heated Wiper Park and Defroster
- Deep Tinted Glass- Speed Sensitive Variable Intermittent Wipers
- Galvanized Steel/Aluminum Panels- Lip Spoiler- Black Grille
- Power Liftgate Rear Cargo Access- Roof Rack Rails Only- LED Brakelights
- Headlights-Automatic Highbeams- Perimeter/Approach Lights- Front Fog Lamps
- Off-Road Lights- Laminated Glass

Safety

- Bucket Front Seats w/Cloth Back Material
- Bucket Folding Captain Front Facing Heated Manual Reclining Fold Forward Seatback ActiveX Cloth/Leatherette Rear Seat w/Manual Fore/Aft
- Gauges -inc: Speedometer, Odometer, Engine Coolant Temp, Tachometer, Oil Level, Trip Odometer and Trip Computer
- Power Rear Windows and Fixed 3rd Row Windows
- Fixed 50-50 Bench ActiveX Cloth/Leatherette 3rd Row Seat Front, Manual Fold Into Floor, 2 Manual and Adjustable Head Restraints
- Remote Keyless Entry w/Integrated Key Transmitter, Illuminated Entry, Illuminated Ignition Switch and Panic Button
- Proximity Key For Doors And Push Button Start
- Voice Activated Dual Zone Front Automatic Air Conditioning
- Rear HVAC w/Separate Controls
- Heated ActiveX Trimmed Captain's Chairs -inc: heathered cloth inserts, deep tangerine stitching and Timberline logo, 10-way power driver (power function for tilt, lumbar and recline), 8-way power passenger (power function for lumbar and recline) and 2-way

remote), 3-way power passenger (power function for lumbar and recline) and 2-way manually adjustable driver and front passenger head restraints (2-way up/down when Dual-Headrest Rear Seat Entertainment System (50S) is ordered)

- Smart Device Remote Engine Start
- FOB Controls -inc: Cargo Access and Remote Engine Start
- FordPass Connect -inc: 4G LTE Wi-Fi hotspot connects up to 10 devices w/wireless data trial that begins upon AT&T activation and expires at the end of 3 months or when 3GB of data is used, whichever comes first, but cannot extend beyond the trial subscription period for remote features, To activate, go to www.att.com/ford, remotely start, lock and unlock vehicle, schedule specific times to remotely start vehicle, locate parked vehicle and check vehicle status (FordPass Connect, the Ford Pass App, and Complimentary Connected Services are required for remote features (see FordPass terms for details), Connected Service and features depend on compatible AT&T network availability, Evolving technology/cellular networks/vehicle capability may limit functionality and prevent operation of connected features, Connected services excludes Wi-Fi hotspot.), Note: Ford Telematics and data services prep included for fleet only: FordPass Connect 4G Wi-Fi modem provides data to support telematics and data services including but not limited to vehicle location, speed, idle time, fuel, vehicle diagnostics and maintenance alerts, Device enables telematics services through Ford or authorized providers, Activate at www.fleet.ford.com or call 833-FCS-Ford, (833-327-3673)
- Power 1st Row Windows w/Driver And Passenger 1-Touch Up/Down
- Power Door Locks w/Autolock Feature- Trip Computer- 8-Way Driver Seat
- 6-Way Passenger Seat
- Front Center Armrest and Rear Seat Mounted Armrest Outboard Only
- Manual Tilt/Telescoping Steering Column
- Sport Heated Leather/Metal-Look Steering Wheel- Front Cupholder- Rear Cupholder
- Compass- Remote Releases -Inc: Power Cargo Access- Keypad
- Cruise Control w/Steering Wheel Controls- Distance Pacing w/Traffic Stop-Go
- HVAC -inc: Underseat Ducts and Headliner/Pillar Ducts - Locking Glove Box
- Driver Foot Rest- Full Cloth Headliner- Leatherette Door Trim Insert
- Interior Trim -inc: Metal-Look Instrument Panel Insert, Metal-Look/Piano Black Door Panel Insert, Metal-Look Console Insert and Metal-Look Interior Accents
- Day-Night Rearview Mirror
- Driver And Passenger Visor Vanity Mirrors w/Driver And Passenger Illumination, Driver And Passenger Auxiliary Mirror
- Full Floor Console w/Covered Storage, Mini Overhead Console w/Storage and 4 12V DC Power Outlets
- Front And Rear Map Lights- Fade-To-Off Interior Lighting- Carpet Floor Trim
- Full Carpet Floor Covering -inc: Vinyl/Rubber Front And Rear Floor Mats
- Trunk/Hatch Auto-Latch- Cargo Area Concealed Storage- Cargo Net
- Cargo Space Lights
- Voice-Activated Touchscreen Navigation System -inc: pinch-to-zoom capability, SiriusXM Traffic and Travel Link, Note: SiriusXM Traffic and Travel Link includes a 5-year prepaid subscription, SiriusXM Traffic and Travel Link service is not available in Alaska or Hawaii, After your trial period ends, Sirius XM audio and data services each require a subscription sold separately, or as a package, by SiriusXM Radio Inc, See SiriusXM customer agreement for complete terms at www.siriusxm.com, All fees and programming subject to change, Trial subscriptions not available in Alaska and Hawaii
- Driver / Passenger And Rear Door Bins- Delayed Accessory Power- Systems Monitor
- Outside Temp Gauge- Analog Appearance- Redundant Digital Speedometer
- Manual Adjustable Rear Head Restraints- 2 Seatback Storage Pockets
- Driver And Passenger Heated-Cushion, Driver And Passenger Heated-Seatback
- Securilock Anti-Theft Ignition (pats) Immobilizer- Perimeter Alarm- Air Filtration
- 4 12V DC Power Outlets

Mechanical

- Transmission: 10-Speed Automatic- SelectShift Capability w/Paddle Shifters
 - Engine: 2.3L EcoBoost I-4 -inc: auto start-stop technology
 - 3.58 Torsen Limited Slip Rear Axle- GVWR: 6,160 lbs
 - 50 State Emissions System Flexible Fuel Vehicle (FFV) system is standard equipment for vehicles with the 3.3L Ti-VCT V6 FFV engine.
 - Transmission w/Driver Selectable Mode- Automatic Full-Time Four-Wheel Drive
 - Battery w/Run Down Protection- Regenerative Alternator
 - Class IV Towing Equipment -inc: Hitch and Trailer Sway Control - Trailer Wiring Harness
 - 3 Skid Plates- Gas-Pressurized Shock Absorbers- Front And Rear Anti-Roll Bars
 - Off-Road Suspension- Electric Power-Assist Speed-Sensing Steering
 - 17.9 Gal. Fuel Tank- Quasi-Dual Stainless Steel Exhaust- Auto Locking Hubs
 - Strut Front Suspension w/Coil Springs- Multi-Link Rear Suspension w/Coil Springs
 - 4-Wheel Disc Brakes w/4-Wheel ABS, Front And Rear Vented Discs, Brake Assist, Hill Descent Control, Hill Hold Control and Electric Parking Brake
 - Upfitter Switches
-

Ask Jorge Lopez
askjorgelopez.com
281-205-0352

22702 Tomball Parkway
Tomball, TX 77375

© 2024 AutoRevo - All rights reserved. - Powered by [AutoRevo](#)