



2023 Ram 1500 TRX 4X4 DUPONT KEVLAR,LIFTED,BUMPERS,LED'S,22'S

Our Price \$145,900

View this vehicle on our website at tveauto.com

Texas Vehicle Exchange

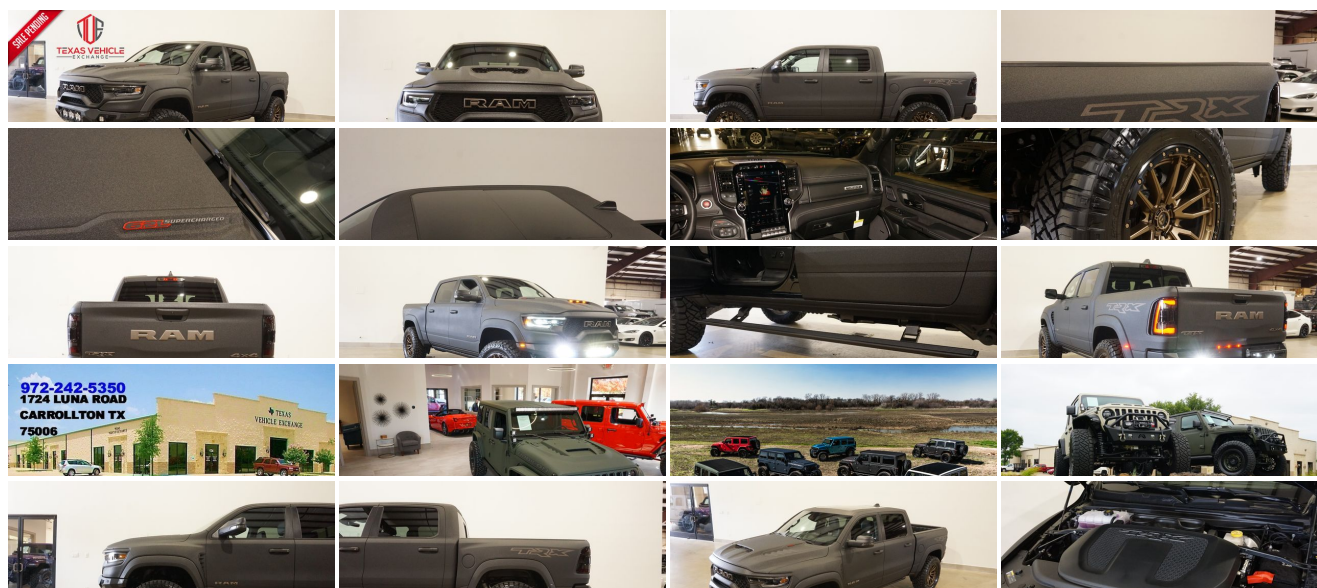
[972-242-5350](tel:972-242-5350)

1724 Luna Road , Carrollton, TX 75006

Photos

Details

Contact



Specifications:

Year:

2023

VIN:	1C6SRFU92PN500904
Make:	Ram
Stock:	500904
Model/Trim:	1500 TRX 4X4 DUPONT KEVLAR,LIFTED,BUMPERS,LED'S,22'S
Condition:	Pre-Owned
Body:	Pickup Truck
Exterior:	Black
Engine:	ENGINE: 6.2L SUPERCHARGED HEMI V8 SRT
Interior:	Black Leather
Transmission:	TRANSMISSION: 8-SPEED AUTOMATIC (8HP95)
Mileage:	86
Drivetrain:	4 Wheel Drive
Economy:	City 10 / Highway 14

Vehicle Description

NATION WIDE FINANCING

SUBMIT CREDIT APP WWW.TVEAUTO.COM

OR CALL 972-242-5350

2023 RAM 1500 TRX CREW CAB 4X4, 6.2L SUPERCHARGED HEMI V8 SRT ENGINE, 8 SPEED AUTOMATIC TRANSMISSION, ONLY 86 MILES, RAPTOR BLACK KEVLAR COATING WITH KING RANCH BROWN ACCENTS W/BLACK LEATHER INTERIOR, CARFAX REPORTS 1 OWNER NO ACCIDENTS, NON-SMOKER, TRX LEVEL 1 EQUIPMENT GROUP, REMOTE START, CUSTOM 2" LEVEL KIT, ADDICTIVE DESERT DESIGNS BOMBER FRONT BUMPER WITH 3 BAJA DESIGNS LP6 ROUND LED LIGHTS & 2 BAJA DESIGNS SQUADRON SIDE LED LIGHTS, FRONT & REAR PARK DISTANCE SENSORS, DUAL-PANE PANORAMIC SUNROOF, 12.0" TOUCH SCREEN NAVIGATION, BACK-UP CAMERA, POWER RETRACTABLE RUNNING BOARDS, POWER WINDOWS, POWER DOOR LOCKS, POWER FOLDING HEATED MIRRORS WITH TURN SIGNALS, BLIND SPOT CONTROL, HEATED TILT/TELESCOPE STEERING WHEEL WITH AUDIO & CRUISE CONTROLS, PADDLE SHIFTERS, DUAL POWER & HEATED FRONT SEATS, POWER ADJUSTABLE PEDALS, TRACTION CONTROL, HILL DESCENT CONTROL, TRX MODE, LAUNCH MODE, AUXILIARY SWITCHES, ICE COLD A/C, DUAL CLIMATE CONTROL, HARMAN/KARDON HD AM/FM/SIRIUS STEREO, U-CONNECT, SELF DIMMING REAR VIEW MIRROR, HOMELINK GARAGE CONTROLS, DUAL LIGHTED VANITY MIRRORS, REAR A/C VENTS, POWER SLIDING REAR WINDOW, SPRAY IN BEDLINER, TINTED TAIL LIGHTS, ADDICTIVE DESERT DESIGNS BOMBER REAR BUMPER WITH 2 BAJA DESIGNS SQUADRON LED LIGHTS, TOW PACKAGE WITH RECEIVER HITCH, RUBBER FLOOR MATS, OWNER'S MANUAL, 2 KEYS/2 REMOTES. 22" FUEL BRONZE "REBEL 6" WHEELS, FRONT TIRES ARE NITTO RIDGE GRAPPLER 37X13.50R/22, REAR TIRES ARE NITTO RIDGE GRAPPLER 37X13.50R/22. RUNS AND DRIVES GREAT. GIVE US A CALL @ 972-242-5350 OR STOP BY FOR A TEST DRIVE. 1724 LUNA RD IN CARROLLTON - 2 MILES NORTH OF 635. CLICK ON CARFAX ICON TO VIEW A FULL REPORT AT NO COST TO YOU.

Installed Options

Option Packages

interior

- 8-Way Power Driver Seat -inc: Power Recline, Height Adjustment, Fore/Aft Movement and Cushion Tilt
- Cloth/Vinyl Bucket Seats- Day-Night Auto-Dimming Rearview Mirror
- FOB Controls -inc: Remote Start
- Gauges -inc: Speedometer, Odometer, Voltmeter, Oil Pressure, Engine Coolant Temp, Tachometer, Inclinator, Altimeter, Oil Temperature, Transmission Fluid Temp, Engine Hour Meter, Trip Odometer and Trip Computer
- Passenger Visor Vanity Mirror w/Passenger Illumination
- Power 1st Row Windows w/Driver And Passenger 1-Touch Up/Down
- Power Door Locks w/Autolock Feature- Power Rear Windows
- Proximity Key For Push Button Start Only - Rear 60/40 Folding Seat
- Remote Keyless Entry w/Integrated Key Transmitter, Illuminated Entry and Panic Button
- Seats w/Cloth Back Material- Smart Device Remote Engine Start
- Style Leather Steering Wheel- Trip Computer- 2 12V DC Power Outlets
- 2 12V DC Power Outlets and 2 120V AC Power Outlets - 4 Way Front Headrests
- 4-Way Passenger Seat -inc: Manual Recline and Fore/Aft Movement
- 4G LTE Wi-Fi Hot Spot Mobile Hotspot Internet Access- Air Filtration- Bucket Seats
- Compass- Cruise Control w/Steering Wheel Controls- Delayed Accessory Power
- Digital/Analog Appearance- Driver Information Center
- Dual Zone Front Automatic Air Conditioning w/Front Infrared
- Fade-To-Off Interior Lighting- Front Center Armrest w/Storage and Rear Center Armrest
- Front Facing Cloth/Vinyl Rear Seat- Front Map Lights- Front Seat Back Map Pockets
- Full Carpet Floor Covering MOPAR -inc: Vinyl/Rubber Front And Rear Floor Mats
- Full Cloth Headliner
- Full Floor Console w/Covered Storage, Mini Overhead Console w/Storage, 2 12V DC Power Outlets and 2 120V AC Power Outlets
- HVAC -inc: Underseat Ducts and Console Ducts - Illuminated Front Cupholder
- Illuminated Locking Glove Box
- Instrument Panel Bin, Dashboard Storage, Interior Concealed Storage, Driver / Passenger And Rear Door Bins
- Interior Trim -inc: Deluxe Sound Insulation, Piano Black/Metal-Look Instrument Panel Insert, Piano Black Door Panel Insert, Metal-Look Console Insert and Aluminum/Metal-Look Interior Accents
- Leather/Metal-Look Gear Shifter Material- Manual Adjustable Rear Head Restraints
- Manual Tilt/Telescoping Steering Column- Outside Temp Gauge- Perimeter Alarm
- Pickup Cargo Box Lights- Power 4-Way Driver Lumbar Adjust- Rear Cupholder
- Redundant Digital Speedometer- Sentry Key Immobilizer- Smart Device Integration
- Valet Function- Vinyl Door Trim Insert

Exterior

- Black Front Bumper w/Metal-Look Rub Strip/Fascia Accent and 2 Tow Hooks
- Black Rear Step Bumper w/1 Tow Hook - Exterior Mirrors w/Heating Element
- Exterior Mirrors w/Supplemental Signals
- Power Side Mirrors w/Driver Auto Dimming and Convex Spotter - Power-Folding Mirrors
- Tailgate/Rear Door Lock Included w/Power Door Locks - Variable Intermittent Wipers
- Wheels: 18" x 9" Black Paint/Polish Aluminum- Aluminum Spare Wheel
- Auto On/Off Aero-Composite Led Low/High Beam Daytime Running Auto High-Beam Headlamps w/Delay-Off
- Black Door Handles- Black Exterior Mirrors- Black Fender Flares- Black Grille
- Black Side Windows Trim- Cab Clearance Lights
- Cargo Lamp w/High Mount Stop Light- Clearcoat Paint w/Decal- Deep Tinted Glass
- Exterior Mirrors Courtesy Lamps- Front Fog Lamps
- Full-Size Spare Tire Stored Underbody w/Crankdown
- Galvanized Steel/Aluminum Panels- Headlights-Automatic Highbeams- LED Brakelights
- Laminated Glass- Power Rear Window- Regular Box Style
- Tailgate Rear Cargo Access- Tires: LT325/65R18D All Terrain

Safety

- 8-Way Power Driver Seat -inc: Power Recline, Height Adjustment, Fore/Aft Movement and Cushion Tilt
- Cloth/Vinyl Bucket Seats- Day-Night Auto-Dimming Rearview Mirror
- FOB Controls -inc: Remote Start
- Gauges -inc: Speedometer, Odometer, Voltmeter, Oil Pressure, Engine Coolant Temp, Tachometer, Inclinator, Altimeter, Oil Temperature, Transmission Fluid Temp, Engine Hour Meter, Trip Odometer and Trip Computer
- Passenger Visor Vanity Mirror w/Passenger Illumination
- Power 1st Row Windows w/Driver And Passenger 1-Touch Up/Down
- Power Door Locks w/Autolock Feature- Power Rear Windows
- Proximity Key For Push Button Start Only - Rear 60/40 Folding Seat
- Remote Keyless Entry w/Integrated Key Transmitter, Illuminated Entry and Panic Button
- Seats w/Cloth Back Material- Smart Device Remote Engine Start

factory installed Packages

ENGINE: 6.2L SUPERCHARGED HEMI V8 SRT

TRANSMISSION: 8-SPEED AUTOMATIC (8HP95)

BLIND SPOT & CROSS PATH DETECTION \$595

DUAL-PANE PANORAMIC SUNROOF -inc: Dome Dual LED Reading Lamp \$1,495

HARMAN/KARDON 19 SPEAKER PREMIUM SOUND \$1,195

PARKSENSE FRONT/REAR PARK ASSIST W/STOP \$445

TRX LEVEL 1 EQUIPMENT GROUP -inc: Full Length Premium Upgraded Floor Console, Rear Window Defroster, Rain Sensitive Windshield Wipers, Power Adjustable Pedals, Driver/Passenger Wrapped Assist Handles, Pick-Up Box Lighting, MOPAR Bright Pedal Kit, IP LED Ambient Light Pipe, Premium Wrapped IP Bezel, Rear Underseat Compartment Storage, Universal Garage Door Opener, Luxury Front Door Trim Panel, Heated Steering Wheel, Front Door Accent Lighting, Power 8-Way Driver & Passenger Seats, Rear Door Accent Lighting, Sun Visors w/Illuminated Vanity Mirrors \$3,995

QUICK ORDER PACKAGE 29Y -inc: Engine: 6.2L Supercharged HEMI V8 SRT, Transmission: 8-Speed Automatic (8HP95)

Option Packages Total \$7,725

- Style Leather Steering Wheel- Trip Computer- 2 12V DC Power Outlets
- 2 12V DC Power Outlets and 2 120V AC Power Outlets - 4 Way Front Headrests
- 4-Way Passenger Seat -inc: Manual Recline and Fore/Aft Movement
- 4G LTE Wi-Fi Hot Spot Mobile Hotspot Internet Access- Air Filtration- Bucket Seats
- Compass- Cruise Control w/Steering Wheel Controls- Delayed Accessory Power
- Digital/Analog Appearance- Driver Information Center
- Dual Zone Front Automatic Air Conditioning w/Front Infrared
- Fade-To-Off Interior Lighting- Front Center Armrest w/Storage and Rear Center Armrest
- Front Facing Cloth/Vinyl Rear Seat- Front Map Lights- Front Seat Back Map Pockets
- Full Carpet Floor Covering MOPAR -inc: Vinyl/Rubber Front And Rear Floor Mats
- Full Cloth Headliner
- Full Floor Console w/Covered Storage, Mini Overhead Console w/Storage, 2 12V DC Power Outlets and 2 120V AC Power Outlets
- HVAC -inc: Underseat Ducts and Console Ducts - Illuminated Front Cupholder
- Illuminated Locking Glove Box
- Instrument Panel Bin, Dashboard Storage, Interior Concealed Storage, Driver / Passenger And Rear Door Bins
- Interior Trim -inc: Deluxe Sound Insulation, Piano Black/Metal-Look Instrument Panel Insert, Piano Black Door Panel Insert, Metal-Look Console Insert and Aluminum/Metal-Look Interior Accents
- Leather/Metal-Look Gear Shifter Material- Manual Adjustable Rear Head Restraints
- Manual Tilt/Telescoping Steering Column- Outside Temp Gauge- Perimeter Alarm
- Pickup Cargo Box Lights- Power 4-Way Driver Lumbar Adjust- Rear Cupholder
- Redundant Digital Speedometer- Sentry Key Immobilizer- Smart Device Integration
- Valet Function- Vinyl Door Trim Insert

Mechanical

- Transmission w/Driver Selectable Mode and Sequential Shift Control w/Steering Wheel Controls
- Transmission: 8-Speed Automatic (8HP95)- 1360# Maximum Payload
- 250 Amp Alternator- 3.55 Rear Axle Ratio- 33 Gal. Fuel Tank
- 4-Wheel Disc Brakes w/4-Wheel ABS, Front And Rear Vented Discs, Brake Assist, Hill Descent Control, Hill Hold Control and Electric Parking Brake
- 5 Skid Plates- 800CCA Maintenance-Free Battery- Auto Locking Hubs
- Automatic Full-Time Four-Wheel Drive
- Automatic w/Driver Control Ride Control Off-Road Adaptive Suspension
- Bilstein Brand Name Shock Absorbers
- Class IV Towing Equipment -inc: Hitch and Trailer Sway Control
- Driver Selectable Rear Locking Differential
- Dual Stainless Steel Exhaust w/Black Tailpipe Finisher- Electric Power-Assist Steering
- Electronic Transfer Case- Engine Oil Cooler- Engine: 6.2L Supercharged HEMI V8 SRT
- Federal Emissions- Front Anti-Roll Bar- GVWR: 7,800 lbs
- Short And Long Arm Front Suspension w/Coil Springs
- Solid Axle Rear Suspension w/Coil Springs- Trailer Wiring Harness

Texas Vehicle Exchange

Texas Vehicle Exchange

View this car on our website at tveauto.com/7188049

Website: tveauto.com

Phone: [972-242-5350](tel:972-242-5350)

Map: [1724 Luna Road, Carrollton, TX 75006](#)

