

1995 Dodge Ram Laramie SLT

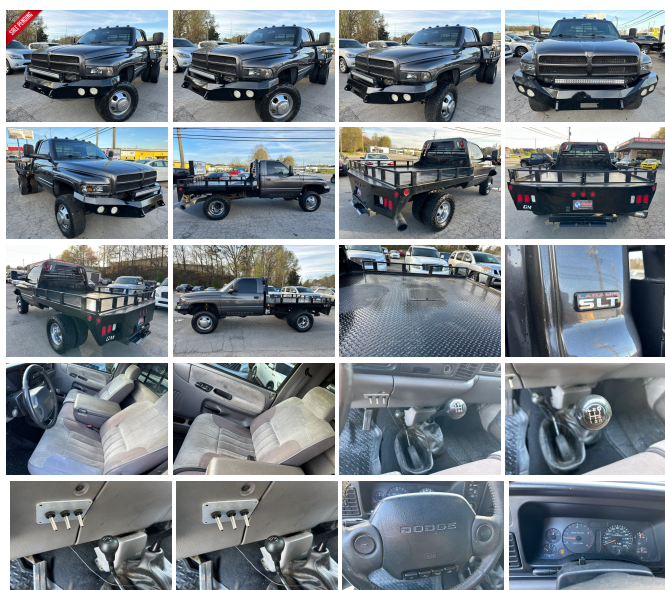
View this car on our website at globalmotorsusa.com/7186962/ebrochure



Our Price **\$17,900**

Specifications:

Year:	1995
VIN:	1B7KF26C0SS383112
Make:	Dodge
Model/Trim:	Ram Laramie SLT
Condition:	Pre-Owned
Exterior:	Gray
Interior:	Gray
Mileage:	225,609



1995 Dodge Ram Laramie SLT

Global Motorsports - 678-971-1854 - View this car on our website at globalmotorsusa.com/7186962/ebrochure

Our Location :



1995 Dodge Ram Laramie SLT

Global Motorsports - 678-971-1854 - View this car on our website at globalmotorsusa.com/7186962/ebrochure

Installed Options

Interior

- Electronic AM/FM stereo radio-inc: digital clock, seek, (2) speakers
- HD vinyl 3-passenger bench seat w/head restraints - Vinyl mat floor covering
- 11.4" day/night rearview mirror- Black 2-spoke steering wheel- Cigar lighter
- Color-keyed full length door trim panels w/armrests
- Color-keyed instrument panel w/ash receiver & non-locking glove box
- Dash/plenum insulation liners- Dual color-keyed vinyl sun visors w/center supports
- Dual-opening retractable cup holder
- Fasten seat belts/key-in-ignition/headlamps-on warning chimes- Hood release in cab
- Voltmeter, trip odometer, oil pressure/engine temp gauges

Exterior

- Aerodynamic halogen headlamps- Bright grille
- Corrosion resistant zinc-coated galvanized steel w/anti-chip coating
- Deluxe 2-speed intermittent windshield wipers - Dual black manual 6" x 9" exterior mirrors
- Painted front bumper w/step pad- Premium paint w/clear topcoat finish
- Removeable tailgate w/caliper latches, color-keyed "Dodge" decal- Tinted glass windows
- Vented quarter windows

Mechanical

- 5-speed manual transmission w/OD- 5.9L (360) MPI V8 "MAGNUM" engine
- LT245/75R16E all-season SBR BSW tires- Rear-wheel anti-lock brakes
- (4) 16" x 6.5" steel wheels - (4) black hub caps- 3.54 axle ratio- 35 gallon fuel tank
- 600-amp maintenance-free battery- 75-amp alternator
- 8' pickup box-inc: dual wall construction, one-piece high strength steel floor, 2-tier loading capability, bulkhead dividing provision, tie down loops
- 8800# GVWR (4850 front/6085 rear), springs (4850 front/6085 rear), axles (4850 front/6200 rear)
- Bottle-type axle jack- Electronic ignition system- Exhaust emission control system
- Four wheel drive- Front stabilizer bar- HD front/rear gas-charged shock absorbers
- NV241 2-speed transfer case w/front shift-on-the-fly auto hubs
- Pwr front disc/rear drum brakes- Pwr steering- Solid front axle w/link-coil suspension
- Solid rear axle w/longitudinal leaf springs- Stainless steel exhaust system

Global Motorsports

globalmotorsusa.com

678-971-1854

2200 Browns Bridge Rd.

Gainesville, GA 30501

© 2024 AutoRevo - All rights reserved. - Powered by AutoRevo