



2023 Jeep Wrangler Unlimited Rubicon 392 DUPONT KEVLAR,BUMPERS,FUEL WHLS

Our Price \$136,900

View this vehicle on our website at tveauto.com

Texas Vehicle Exchange

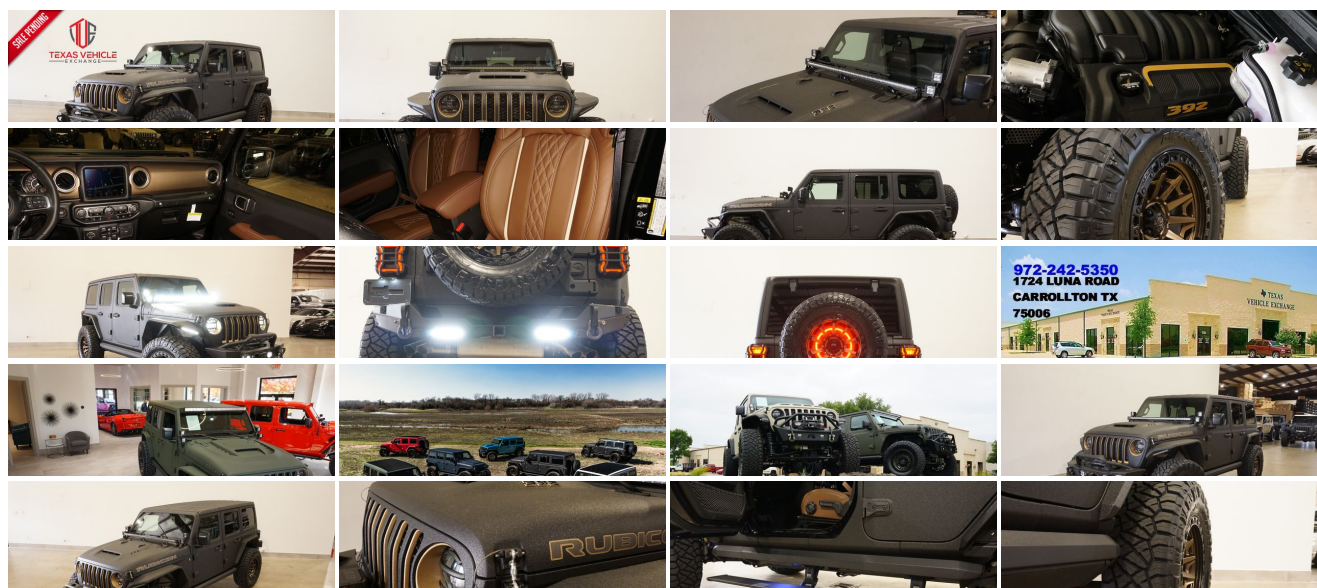
[972-242-5350](tel:972-242-5350)

1724 Luna Road , Carrollton, TX 75006

Photos

Details

Contact



Specifications:

Year:

2023

VIN:	1C4JJXSJ6PW581799
Make:	Jeep
Stock:	581799
Model/Trim:	Wrangler Unlimited Rubicon 392 DUPONT KEVLAR,BUMPERS,FUEL WHLS
Condition:	Pre-Owned
Body:	SUV
Exterior:	Black
Engine:	ENGINE: 6.4L V8 SRT HEMI MDS
Interior:	Brown Leather
Transmission:	TRANSMISSION: 8-SPEED AUTOMATIC (8HP75)
Mileage:	49
Drivetrain:	4 Wheel Drive
Economy:	City 13 / Highway 17

Vehicle Description

NATION WIDE FINANCING

SUBMIT CREDIT APP WWW.TVEAUTO.COM

OR CALL 972-242-5350

"RAPTOR BLACK EDITION"

CUSTOM BUILT **KEVLAR** 2023 JEEP WRANGLER JL UNLIMITED RUBICON 4X4 WITH 27X PACKAGE

UPGRADES INCLUDE:

- * RAPTOR BLACK KEVLAR COATING WITH KING RANCH BROWN ACCENTS
- * 6.4L V8 SRT HEMI ENGINE
- * CUSTOM ALEA BROWN LEATHER WITH TAN STITCHING
- * FACTORY REMOTE START
- * REMOTE PROXIMITY KEYLESS ENTRY
- * COLD WEATHER GROUP
- * LED LIGHTING GROUP
- * SAFETY GROUP
- * ADVANCED SAFETY GROUP
- * FACTORY 8.4 INCH TOUCH SCREEN NAVIGATION WITH HD AM/FM/SIRIUS STEREO &

ALPINE PREMIUM AUDIO SYSTEM

- * FACTORY BACK-UP CAMERA
- * U-CONNECT
- * SMITTYBILT XRC GEN 2 FRONT BUMPER WITH LED FOGLIGHTS
- * FRONT D-RINGS & ISOLATORS (KING RANCH BROWN)
- * SMITTYBILT NEW GEN 3 "X20" 10,000 LB WATERPROOF AND WIRELESS CONTROL WINCH WITH SYNTHETIC ROPE
- * FACTOR 55 PROLINK (BLACK)
- * FACTORY MESH GRILLE PAINTED (KING RANCH BROWN)
- * FACTORY LED HEADLIGHTS
- * RUGGED RIDGE BLACK HEADLIGHT GUARDS
- * FACTORY HOOD WITH AIR INTAKE SCOOP
- * DRAKE OFF ROAD HOOD LATCHES
- * ROAD ARMOR STEALTH JL FENDER FLARES
- * DV8 OFF ROAD FRONT & REAR INNER FENDERS
- * TERAFLX FALCON STABILIZER KIT
- * SUSPENSION PARTS PAINTED (KING RANCH BROWN)
- * MOPAR AUXILIARY SWITCH BANK KIT
- * 50" LED LIGHT BAR AND 4 RIGID INDUSTRIES DUALY D2 LED PILLAR LIGHTS
- * AMP RESEARCH POWERSTEP XL RUNNING BOARDS WITH LED LIGHT KIT
- * EVOLUTION 2 BLACK LED TAIL LIGHTS
- * RUGGED RIDGE BLACK TAIL LIGHT GUARDS
- * RUGGED RIDGE SPARTACUS HD HINGE KIT
- * RUGGED RIDGE LED THIRD BRAKE LIGHT RING
- * SMITTYBILT XRC GEN 2 REAR BUMPER WITH 2 LED LIGHTS & REAR PARK DISTANCE SENSORS
- * REAR D-RINGS & ISOLATORS (KING RANCH BROWN)
- * ALL WEATHER FLOOR MATS
- * TAZER JL PROGRAMMER WITH SPEEDOMETER CALIBRATION
- * 20" FUEL BRONZE W/BLACK LIP "COVERT" WHEELS
- * BRAND NEW NITTO RIDGE GRAPPLER 37X13.50R/20 TIRES

WE BUILD EVERY JEEP WITH PRIDE! DO NOT HESITATE TO CALL US WITH THIS JEEP BUILD. WE CAN MAKE CHANGES TO THIS JEEP BUILD OR CUSTOM BUILD ANY JEEP TO YOUR PREFERENCE. GIVE US A CALL @ 972-242-5350 OR STOP BY FOR A TEST DRIVE. 1724 LUNA RD IN CARROLLTON - 2 MILES NORTH OF 635.

Installed Options

Interior

- 6-Way Driver Seat -inc: Manual Recline, Height Adjustment, Fore/Aft Movement and Manual Lumbar Support
- FOB Controls -inc: Remote Start
- Front Seats w/Leatherette Back Material and Manual Driver Lumbar
- Full Carpet Floor Covering -inc: Carpet Front And Rear Floor Mats
- Gauges -inc: Speedometer, Odometer, Voltmeter, Oil Pressure, Engine Coolant Temp, Tachometer, Inclinator, Altimeter, Oil Temperature, Transmission Fluid Temp, Engine Hour Meter, Trip Odometer and Trip Computer
- Leather Trimmed Bucket Seats
- Power 1st Row Windows w/Driver And Passenger 1-Touch Down
- Power Door Locks w/Autolock Feature
- Power Rear Windows and Fixed 3rd Row Windows
- Proximity Key For Doors And Push Button Start
- Remote Keyless Entry w/Integrated Key Transmitter, Illuminated Entry and Panic Button
- Smart Device Remote Engine Start- Trip Computer- 2 12V DC Power Outlets
- 2 12V DC Power Outlets and 1 120V AC Power Outlet - 2 Seatback Storage Pockets
- 4-Way Passenger Seat -inc: Manual Recline and Fore/Aft Movement
- 4G LTE Wi-Fi Hot Spot Mobile Hotspot Internet Access
- 60-40 Folding Split-Bench Front Facing Fold Forward Seatback Leather Rear Seat
- Air Filtration- Analog Appearance- Cargo Space Lights
- Carpet Floor Trim, Carpet And Rubber Mat- Compass
- Cruise Control w/Steering Wheel Controls- Day-Night Auto-Dimming Rearview Mirror
- Delayed Accessory Power- Distance Pacing w/Traffic Stop-Go
- Driver And Passenger Heated-Cushion, Driver And Passenger Heated-Seatback
- Driver And Passenger Visor Vanity Mirrors w/Driver And Passenger Illumination
- Driver Information Center- Fade-To-Off Interior Lighting- Front And Rear Map Lights
- Front Center Armrest w/Storage and Rear Center Armrest
- Full Floor Console w/Locking Storage, 2 12V DC Power Outlets and 1 120V AC Power Outlet
- Garage Door Transmitter- HVAC -inc: Console Ducts- Heated Leather Steering Wheel
- Illuminated Front Cupholder- Illuminated Rear Cupholder
- Instrument Panel Bin, Dashboard Storage, Driver / Passenger And Rear Door Bins
- Interior Trim -inc: Metal-Look Instrument Panel Insert, Metal-Look Door Panel Insert, Metal-Look Console Insert and Metal-Look Interior Accents
- Leather Gear Shifter Material- Locking Cargo Area Concealed Storage
- Locking Glove Box
- Manual Adjustable Front Head Restraints and Foldable Rear Head Restraints
- Manual Tilt/Telescoping Steering Column- Outside Temp Gauge- Perimeter Alarm
- Redundant Digital Speedometer- Sentry Key Immobilizer- Smart Device Integration
- Tracker System- Voice Activated Dual Zone Front Automatic Air Conditioning

Exterior

- Black Front Bumper w/2 Tow Hooks
- Black Power Heated Side Mirrors w/Manual Folding- Black Rear Bumper w/1 Tow Hook
- Manual Convertible Hard Top w/Glass Rear Window and Fixed Roll-Over Protection
- Rear Window Defroster- Tailgate/Rear Door Lock Included w/Power Door Locks
- Tires: LT285/70R17C BSW Off-Road- Wheels: 17" x 7.5" Beadlock Capable
- Aluminum Spare Wheel
- Auto On/Off Aero-Composite Led Low/High Beam Daytime Running Auto High-Beam Headlamps w/Delay-Off
- Black Door Handles- Black Side Windows Trim
- Black Wheel Well Trim and Body-Colored Fender Flares
- Body-Color Grille w/Colored Accents- Clearcoat Paint w/Badging- Deep Tinted Glass
- Flip-Up Rear Window- Freedom Panel Storage Bag- Front Fog Lamps
- Full-Size Spare Tire Mounted Outside Rear
- Galvanized Steel/Aluminum/Magnesium Panels- Headlights-Automatic Highbeams
- LED Brakelights- Manual Targa Composite 1st Row Sunroof
- Rear Window Wiper/Washer- Swing-Out Rear Cargo Access

Option Packages

Factory Installed Packages

ENGINE: 6.4L V8 SRT HEMI MDS

TRANSMISSION: 8-SPEED AUTOMATIC (8HP75)

QUICK ORDER PACKAGE 27X RUBICON 392

-inc: Engine: 6.4L V8 SRT HEMI MDS,
Transmission: 8-Speed Automatic (8HP75)

Leather Trimmed Upper Material - Steering Column - Leather Gauge Housing

- Variable Intermittent Wipers

Safety

- 6-Way Driver Seat -inc: Manual Recline, Height Adjustment, Fore/Aft Movement and Manual Lumbar Support
- FOB Controls -inc: Remote Start
- Front Seats w/Leatherette Back Material and Manual Driver Lumbar
- Full Carpet Floor Covering -inc: Carpet Front And Rear Floor Mats
- Gauges -inc: Speedometer, Odometer, Voltmeter, Oil Pressure, Engine Coolant Temp, Tachometer, Inclinometer, Altimeter, Oil Temperature, Transmission Fluid Temp, Engine Hour Meter, Trip Odometer and Trip Computer
- Leather Trimmed Bucket Seats
- Power 1st Row Windows w/Driver And Passenger 1-Touch Down
- Power Door Locks w/Autolock Feature
- Power Rear Windows and Fixed 3rd Row Windows
- Proximity Key For Doors And Push Button Start
- Remote Keyless Entry w/Integrated Key Transmitter, Illuminated Entry and Panic Button
- Smart Device Remote Engine Start- Trip Computer- 2 12V DC Power Outlets
- 2 12V DC Power Outlets and 1 120V AC Power Outlet - 2 Seatback Storage Pockets
- 4-Way Passenger Seat -inc: Manual Recline and Fore/Aft Movement
- 4G LTE Wi-Fi Hot Spot Mobile Hotspot Internet Access
- 60-40 Folding Split-Bench Front Facing Fold Forward Seatback Leather Rear Seat
- Air Filtration- Analog Appearance- Cargo Space Lights
- Carpet Floor Trim, Carpet And Rubber Mat- Compass
- Cruise Control w/Steering Wheel Controls- Day-Night Auto-Dimming Rearview Mirror
- Delayed Accessory Power- Distance Pacing w/Traffic Stop-Go
- Driver And Passenger Heated-Cushion, Driver And Passenger Heated-Seatback
- Driver And Passenger Visor Vanity Mirrors w/Driver And Passenger Illumination
- Driver Information Center- Fade-To-Off Interior Lighting- Front And Rear Map Lights
- Front Center Armrest w/Storage and Rear Center Armrest
- Full Floor Console w/Locking Storage, 2 12V DC Power Outlets and 1 120V AC Power Outlet
- Garage Door Transmitter- HVAC -inc: Console Ducts- Heated Leather Steering Wheel
- Illuminated Front Cupholder- Illuminated Rear Cupholder
- Instrument Panel Bin, Dashboard Storage, Driver / Passenger And Rear Door Bins
- Interior Trim -inc: Metal-Look Instrument Panel Insert, Metal-Look Door Panel Insert, Metal-Look Console Insert and Metal-Look Interior Accents
- Leather Gear Shifter Material- Locking Cargo Area Concealed Storage
- Locking Glove Box
- Manual Adjustable Front Head Restraints and Foldable Rear Head Restraints
- Manual Tilt/Telescoping Steering Column- Outside Temp Gauge- Perimeter Alarm
- Redundant Digital Speedometer- Sentry Key Immobilizer- Smart Device Integration
- Tracker System- Voice Activated Dual Zone Front Automatic Air Conditioning

Mechanical

- Brake Actuated Limited Slip Differential- Driver Selectable Front Locking Differential
- Driver Selectable Rear Locking Differential
- Transmission w/Sequential Shift Control w/Steering Wheel Controls
- Transmission: 8-Speed Automatic (8HP75)- 1002# Maximum Payload
- 21.5 Gal. Fuel Tank- 220 Amp Alternator- 3.73 Rear Axle Ratio
- 4-Wheel Disc Brakes w/4-Wheel ABS, Front And Rear Vented Discs, Brake Assist, Hill Descent Control and Hill Hold Control
- 5 Skid Plates- 700CCA Maintenance-Free Battery w/Run Down Protection
- Auto Locking Hubs- Dual Stainless Steel Exhaust
- Electro-Hydraulic Power Assist Steering- Engine Oil Cooler
- Engine: 6.4L V8 SRT HEMI MDS- Federal Emissions
- Fox Brand Name Shock Absorbers
- Front Active w/Driver Control Anti-Roll Bar and Rear Anti-Roll Bar- GVWR: 6,100 lbs
- Leading Link Front Suspension w/Coil Springs- Manual Transfer Case
- Part And Full-Time Four-Wheel Drive- Rubicon 392 Suspension
- Solid Axle Rear Suspension w/Coil Springs
- Towing Equipment -inc: Trailer Sway Control- Upfitter Switches

Texas Vehicle Exchange

Texas Vehicle Exchange

View this car on our website at tveauto.com/7186552

Website: tveauto.com

Phone: [972-242-5350](tel:972-242-5350)

Map: [1724 Luna Road, Carrollton, TX 75006](#)

