

2019 Chevrolet Express Commercial Cutaway Box Truck

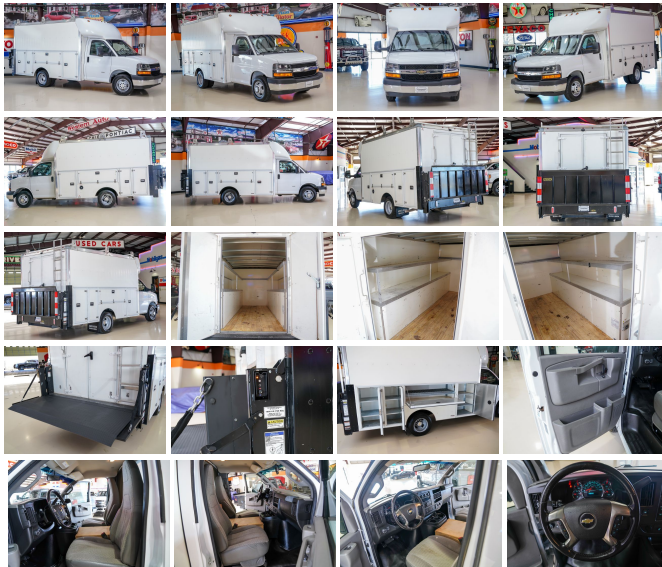
View this car on our website at mrcarguys.com/7186522/ebrochure



Our Price **\$52,988**

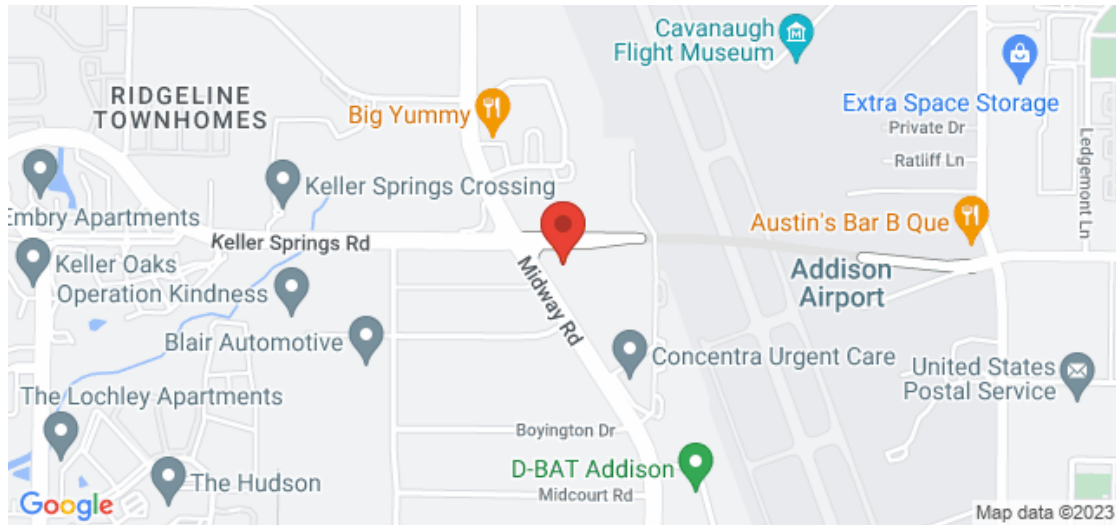
Specifications:

Year:	2019
VIN:	1GB3GRCG4K1156131
Make:	Chevrolet
Stock:	156131
Model/Trim:	Express Commercial Cutaway Box Truck
Condition:	Pre-Owned
Exterior:	Summit White
Engine:	ENGINE, VORTEC 6.0L V8
Interior:	Neutral
Transmission:	Automatic
Mileage:	36,020
Drivetrain:	Rear Wheel Drive



2019 Chevrolet Express Commercial Cutaway Box Truck Looking for a reliable and stylish commercial truck that delivers exceptional performance and comfort? Look no further than the 2019 Chevrolet Express Commercial Cutaway Box Truck. This truck is the perfect combination of luxury, power, and safety, making it the ideal choice for anyone who values reliability, style, and performance. With its Vortec 6.0L V8 engine and 8-speed automatic transmission, this truck delivers exceptional power and performance, making it perfect for long hauls and extended trips. And with its advanced safety features, including airbags and anti-lock brakes, this truck ensures a safe and secure driving experience. But that's not all. This truck also offers a serious utility, with a liftgate and wooden floored cargo area the Express is outfitted for any number of applications. This truck also offers lasting value, as a CARFAX 1-Owner vehicle with no accident or damage reported. And with the AS-IS Extended Available warranty, you can rest assured that this truck will provide reliable performance for years to come. So if you're looking for a reliable and stylish commercial truck that delivers exceptional performance and comfort, look no further than the 2019 Chevrolet Express Commercial Cutaway Box Truck. With its VORTEC 6.0L V8 engine, advanced safety features, and luxurious interior, this truck is the perfect choice for anyone who values reliability, style, and performance. READY for work and play! Give us a call today! Can't make it in? We offer shipping all over the United States. Ask your salesperson for shipping quotes. Financing is available with competitive rates! Get pre-approved in no time by filling out a credit application on the finance section of our website! We also offer industry leading, highly rated warranty options so you can select one perfect for your specific vehicle needs. All vehicles are priced for QUICK SALE. Call us today to see how easy it is to buy a

Our Location :



2019 Chevrolet Express Commercial Cutaway Box Truck

Installed Options

Interior

- Mirror, inside rearview (Included and only available with (UVC) Rear Vision Camera.)
- Seating arrangement, driver and front passenger high-back bucket includes head restraints and vinyl or cloth trim (Not available with (AJ3) driver-side only frontal airbag.)
- Air conditioning, single-zone manual (Not available with (R6G) air conditioning delete.)
- Seats, front bucket with vinyl trim and head restraints includes inboard armrests (Requires (**W) trim. Not available with SEO (ZP0) delete driver and passenger seats. Includes only driver high-back bucket seat with vinyl trim when ordered with (ZX1) driver-only high-back bucket seating arrangement.)
- Cup holders, 3 on the engine console cover
- Power outlets 2 auxiliary on engine console cover with covers, 12-volt
- Power outlet, 120-volt- Floor covering, Black rubberized-vinyl front
- Instrumentation, analog with speedometer, odometer with trip odometer, fuel level, voltmeter, engine temperature and oil pressure
- Driver Information Center includes fuel range, average speed, oil life, fuel used, ice warning, engine hours, average fuel economy, tachometer and maintenance reminders
- Warning tones, headlamp on and key-in-ignition- Oil life monitor
- Theft-deterrent system, vehicle, PASS-Key III
- Heater and defogger with front and side window defoggers
- Headliner, cloth, over driver and passenger
- Visors, driver and front passenger, cloth, padded
- Assist handles, driver and right-front passenger
- Lighting, interior with dome light and door handle-activated switches

Exterior

- Wheels, 4 -16" x 6.5" (40.6 cm x 16.5 cm), 8-lug painted steel, heavy-duty (Only available with (R04) single rear wheel configuration.)
- Tires, front LT245/75R16E all-season, blackwall (Requires (R04) single rear wheel configuration. Jack and spare tire equipment bracket are not included.)

- Tires, rear LT245/75R16E all-season, blackwall (Requires (R04) single rear wheel configuration. Jack and spare tire equipment bracket are not included.)
- Wheel configuration, rear, single (Not available with (C7A) 10,000 lbs. (4536 kg) GVWR or (C7N) 12,300 lbs. (5579 kg.) GVWR.)
- Bumper, front painted Black with step-pad (Deleted when (ZR7) Chrome Appearance Package is ordered.)
- Grille, Black composite (Not available with (ZR7) Chrome Appearance Package.)
- Headlamps, dual halogen composite- Flasher, heavy duty light emitting diode (LED)
- Glass, Solar-Ray light-tinted, all windows
- Mirrors, outside delete (Not available with (5Q7) Upfitter option Blank Sail Panel Delete when ordered with (YF2) Ambulance Package.)
- Wipers, front intermittent wet-arm with pulse washers

Safety

- Mirror, inside rearview (Included and only available with (UVC) Rear Vision Camera.)
- Seating arrangement, driver and front passenger high-back bucket includes head restraints and vinyl or cloth trim (Not available with (AJ3) driver-side only frontal airbag.)
- Air conditioning, single-zone manual (Not available with (R6G) air conditioning delete.)
- Seats, front bucket with vinyl trim and head restraints includes inboard armrests (Requires (**W) trim. Not available with SEO (ZP0) delete driver and passenger seats. Includes only driver high-back bucket seat with vinyl trim when ordered with (ZX1) driver-only high-back bucket seating arrangement.)
- Cup holders, 3 on the engine console cover
- Power outlets 2 auxiliary on engine console cover with covers, 12-volt
- Power outlet, 120-volt- Floor covering, Black rubberized-vinyl front
- Instrumentation, analog with speedometer, odometer with trip odometer, fuel level, voltmeter, engine temperature and oil pressure
- Driver Information Center includes fuel range, average speed, oil life, fuel used, ice warning, engine hours, average fuel economy, tachometer and maintenance reminders
- Warning tones, headlamp on and key-in-ignition- Oil life monitor
- Theft-deterrent system, vehicle, PASS-Key III
- Heater and defogger with front and side window defoggers
- Headliner, cloth, over driver and passenger
- Visors, driver and front passenger, cloth, padded
- Assist handles, driver and right-front passenger
- Lighting, interior with dome light and door handle-activated switches

Mechanical

- Engine, 4.3L V6 with Direct Injection and Variable Valve Timing, includes aluminum block construction (276 hp [206 kW] @ 5200 rpm, 298 lb-ft of torque [404 Nm] @ 3900 rpm) (Requires (C4M) 9900 lbs. (4490 kg) GVWR, (C7A) 10,000 lbs. (4536 kg) GVWR or (JFF) 10,100 lb. (4581 kg) GVWR. Not available with (YF2) Ambulance Package, (YF1) RV Package, (ANC) Shuttle Bus Package or (C7N) 12,300 lbs. (5579 kg) GVWR. Includes external engine oil cooler. Reference the Engine/Axle page for availability.)
- Transmission, 8-speed automatic electronically controlled with overdrive and tow/haul mode. Includes Cruise Grade Braking and Powertrain Grade Braking
- Rear axle, 3.42 ratio (Requires (R04) single rear wheel configuration.) - Body, standard
- GVWR, 9900 lbs. (4490 kg) (Includes (R04) single rear wheel configuration. Not available with (R05) dual rear wheel combination. Reference the Engine/Axle page for availability.)
- Tow/haul mode selector, instrument panel-mounted- Transmission oil cooler, external
- Rear wheel drive- Cooling, external engine oil cooler
- Battery, 600 cold-cranking amps maintenance-free with rundown protection and retained accessory power
- Alternator, 150 amps- Frame, ladder-type- Incomplete vehicle certification
- Suspension, front independent with coil springs and stabilizer bar
- Suspension, rear hypoid drive axle with multi-leaf springs- Steering, power
- Brakes, 4-wheel antilock, 4-wheel disc
- Fuel tank capacity, mid-frame and approximately 33 gallons (124.9L)
- Exhaust, aluminized stainless-steel muffler and tailpipe

Option Packages

Factory Installed Packages

-	
ENGINE, VORTEC 6.0L V8 (341 hp [254.3 kW] @ 5400 rpm, 373 lb-ft of torque [503.6 N-m] @ 4200 rpm)	\$995

-	
Option Packages Total	\$995



Mr Car Guys

mrcarguys.com

214-732-7859

16000 Midway Rd.

Addison, TX 75001

© 2023 AutoRevo - All rights reserved. - Powered by [AutoRevo](#)