

2021 Ford F-250 Limited 4X4 LIFT,BUMPERS,ROOF,360 CAM,A/F WHLS,30K

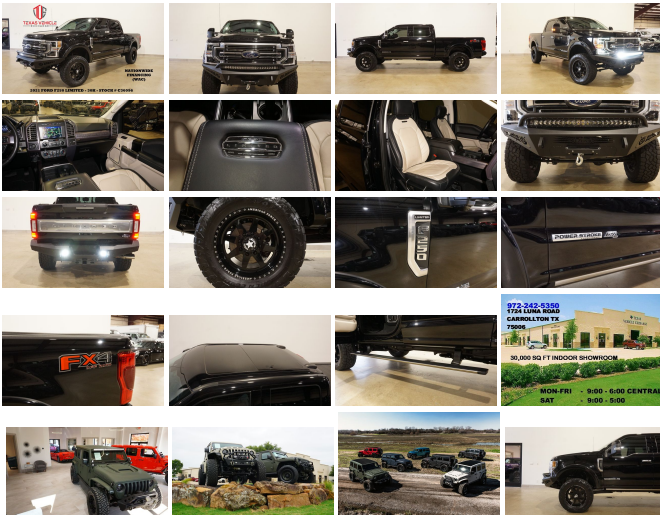
View this car on our website at tveauto.com/7185911/ebrochure



Our Price **\$81,900**

Specifications:

Year:	2021
VIN:	1FT7W2BTXMEC36096
Make:	Ford
Stock:	C36096
Model/Trim:	F-250 Limited 4X4 LIFT,BUMPERS,ROOF,360 CAM,A/F WHLS,30K
Condition:	Pre-Owned
Body:	Pickup Truck
Exterior:	Agate Black Metallic
Engine:	ENGINE: 6.7L 4V OHV POWER STROKE V8 TURBO DIESEL B20
Interior:	Highland Tan Leather
Transmission:	TRANSMISSION: TORQSHIFT 10- SPEED AUTOMATIC
Mileage:	30,918
Drivetrain:	4 Wheel Drive



NATION WIDE FINANCING

SUBMIT CREDIT APP WWW.TVEAUTO.COM

OR CALL 972-242-5350

2021 FORD F250 CREW-CAB LIMITED 4X4 #250, 6.7L V8 TURBO DIESEL ENGINE, 10 SPEED AUTOMATIC TRANSMISSION, ONLY 30K, AGATE BLACK METALLIC W/HIGHLAND TAN LEATHER INTERIOR, CARFAX REPORTS 1 OWNER, APPEARS TO BE A NON-SMOKER, REMOTE START, ADDICTIVE DESERT DESIGNS HONEYBADGER FRONT BUMPER WITH WARN VR EVO 8-S WINCH & 40" RIGID INDUSTRIES LED LIGHT BAR, APPROX 4" READYLIFT SUSPENSION LIFT KIT WITH BILSTEIN SHOCKS, TWIN

KIT WITH BILSTEIN SHOCKS, TWIN PANEL MOONROOF, NAVIGATION, BACK-UP CAMERA, CARGO CAMERA, 360 VIEW CAMERAS, POWER RETRACTABLE RUNNING BOARDS, POWER WINDOWS, POWER DOOR LOCKS, POWER FOLDING & TELESCOPING TRAILER TOWING HEATED MIRRORS WITH TURN SIGNALS, BLIND SPOT CONTROL, POWER & HEATED TILT/TELESCOPE STEERING WHEEL WITH AUDIO & CRUISE CONTROLS, DUAL POWER HEATED & COOLED FRONT SEATS WITH DRIVER 3 MEMORY POSITION, POWER ADJUSTABLE PEDALS, TRACTION CONTROL, LANE KEEPING SYSTEM, HILL DESCENT CONTROL, TRAILER BRAKE CONTROLLER, UPFITTER SWITCHES, ICE COLD A/C, DUAL CLIMATE CONTROL, BANG & OLUFSEN HD AM/FM/SIRIUS STEREO, MICROSOFT SYNC VOICE ACTIVATED SYSTEM, SELF DIMMING REAR VIEW MIRROR, HOMELINK GARAGE CONTROLS, DUAL LIGHTED VANITY MIRRORS, REAR HEATED SEATS, REAR A/C VENTS, POWER SLIDING REAR WINDOW, RETRAX BED COVER, BED RUG, 2 STORAGE BOXES, TAILGATE STEP, ADDICTIVE DESERT DESIGNS HONEYBADGER REAR BUMPER WITH REAR PARK DISTANCE SENSORS & 2 RIGID INDUSTRIES LED LIGHTS, REAR SUSPENSION AIR BAGS, TOW PACKAGE WITH RECEIVER HITCH, FLOOR MATS, OWNER'S MANUAL, 2 KEYS/2 REMOTES, 20" AMERICAN FORCE WHEELS, FRONT TIRES ARE TOYO OPEN COUNTRY A/T 35X12.50R/20 WITH APPROX 50% TREAD LIFE REMAINING, REAR TIRES ARE TOYO OPEN COUNTRY A/T 35X12.50R/20 WITH APPROX 50% TREAD LIFE REMAINING. RUNS AND DRIVES GREAT. GIVE US A CALL @ 972-242-5350 OR STOP BY FOR A TEST DRIVE. 1724 LUNA RD IN CARROLLTON - 2 MILES NORTH OF 635. CLICK ON CARFAX ICON TO VIEW A FULL REPORT AT NO COST TO YOU.

Vehicle History Report : as Of 06/03/2023

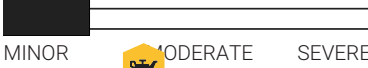


Snapshot

2021 FORD F-250 SUPER DUTY LIMITED



Damage reported: minor damage



MINOR MODERATE SEVERE



Regular oil changes



At least 1 open recall



CARFAX 1-Owner vehicle



29,673 Last reported odometer reading



FREE CARFAX Report

See the full CARFAX Report for additional information

*carfax Snapshot is a reflection of available information on the date the report was pulled. carfax is constantly being updated with new information and is subject to change at any time.

Our Location :



2021 Ford F-250 Limited 4X4 LIFT,BUMPERS,ROOF,360 CAM,A/F WHLS,30K

Texas Vehicle Exchange - 972-242-5350 - View this car on our website at veauto.com/7185911/ebrochure

Installed Options

Interior

- 110V/400W Outlet -inc: 1 in-dash mounted outlet - 2 Seatback Storage Pockets
- 8-Way Driver Seat- Air Filtration- Cruise Control w/Steering Wheel Controls
- Day-Night Auto-Dimming Rearview Mirror- Delayed Accessory Power
- Digital/Analog Appearance- Distance Pacing w/Traffic Stop-Go
- Driver And Passenger Visor Vanity Mirrors w/Driver And Passenger Illumination
- Engine Compartment And Pickup Cargo Box Lights
- FOB Controls -inc: Cargo Access and Remote Engine Start- Fade-To-Off Interior Lighting
- Flow-Through Console -inc: 110V/400W outlet in rear
- FordPass Connect 4G Mobile Hotspot Internet Access- Front And Rear Map Lights
- Front Cupholder- Front Facing Fold-Up Cushion Rear Seat
- Full Carpet Floor Covering -inc: Carpet Front And Rear Floor Mats
- Full Miko Simulated Suede Headliner- Full Overhead Console w/Storage
- Garage Door Transmitter
- Gauges -inc: Speedometer, Odometer, Engine Coolant Temp, Tachometer, Inclinator, Turbo/Supercharger Boost, Transmission Fluid Temp, Engine Hour Meter, Trip Odometer and Trip Computer
- HVAC -inc: Underseat Ducts- Heated Leather Steering Wheel
- Illuminated Locking Glove Box

- Instrument Panel Covered Bin, Dashboard Storage, Driver / Passenger And Rear Door Bins
- Integrated Navigation System w/Voice Activation
- Interior Trim -inc: Metal-Look Instrument Panel Insert, Genuine Wood/Chrome Door Panel Insert, Chrome/Metal-Look Interior Accents and Leather Upholstered Dashboard
- Keypad- Leather Door Trim Insert- Manual Adjustable Rear Head Restraints
- Memory Settings -inc: Door Mirrors, Steering Wheel and Pedals- Outside Temp Gauge
- Passenger Seat- Perimeter Alarm
- Power 1st Row Windows w/Driver And Passenger 1-Touch Up/Down
- Power Adjustable Pedals- Power Door Locks w/Autolock Feature- Power Rear Windows
- Power Tilt/Telescoping Steering Column- Proximity Key For Doors And Push Button Start
- Rear Cupholder
- Remote Keyless Entry w/Integrated Key Transmitter, Illuminated Entry and Panic Button
- Seats w/Leatherette Back Material- Securilock Anti-Theft Ignition (pats) Immobilizer
- Smart Device Remote Engine Start- Systems Monitor- Trip Computer
- Unique Limited 2-Tone Leather 40/Console/40 Seats -inc: premium luxury leather, multi-contour, heated/ventilated, 10-way power driver and 8-way power front passenger seats (includes power lumbar), memory, 4-way adjustable driver and passenger headrests
- Urethane Gear Shifter Material
- Voice Activated Dual Zone Front Automatic Air Conditioning w/Steering Wheel Controls

Exterior

- Aluminum Panels
- Autolamp Auto On/Off Aero-Composite Led Low/High Beam Auto High-Beam Daytime Running Lights Preference Setting Headlamps w/Delay-Off
- Black Side Windows Trim and Black Front Windshield Trim
- Body-Colored Front Bumper w/Body-Colored Rub Strip/Fascia Accent and 2 Tow Hooks
- Body-Colored Power Heated Side Mirrors w/Convex Spotter, Power Folding and Turn Signal Indicator
- Body-Colored Rear Step Bumper- Cargo Lamp w/High Mount Stop Light
- Chrome Door Handles- Clearcoat Paint- Deep Tinted Glass
- Express Open/Close Sliding And Tilting Glass 1st And 2nd Row Sunroof w/Power Sunshade
- Front Fog Lamps- Headlights-Automatic Highbeams- LED Brakelights
- Perimeter/Approach Lights- Power Extendable Trailer Style Mirrors
- Power Rear Window w/Defroster- Power Running Boards
- Rain Detecting Variable Intermittent Wipers- Regular Box Style- Retractable Rear Step
- Silver Grille- Spare Tire Stored Underbody w/Crankdown- Steel Spare Wheel
- Tailgate Rear Cargo Access- Tailgate/Rear Door Lock Included w/Power Door Locks
- Tires: LT275/65Rx20E OWL A/T (4) -inc: Spare may not be the same as road tire
- Wheels: 20" Polished Aluminum

Safety

- 110V/400W Outlet -inc: 1 in-dash mounted outlet - 2 Seatback Storage Pockets
- 8-Way Driver Seat- Air Filtration- Cruise Control w/Steering Wheel Controls
- Day-Night Auto-Dimming Rearview Mirror- Delayed Accessory Power
- Digital/Analog Appearance- Distance Pacing w/Traffic Stop-Go
- Driver And Passenger Visor Vanity Mirrors w/Driver And Passenger Illumination
- Engine Compartment And Pickup Cargo Box Lights
- FOB Controls -inc: Cargo Access and Remote Engine Start- Fade-To-Off Interior Lighting
- Flow-Through Console -inc: 110V/400W outlet in rear
- FordPass Connect 4G Mobile Hotspot Internet Access- Front And Rear Map Lights
- Front Cupholder- Front Facing Fold-Up Cushion Rear Seat
- Full Carpet Floor Covering -inc: Carpet Front And Rear Floor Mats
- Full Miko Simulated Suede Headliner- Full Overhead Console w/Storage
- Garage Door Transmitter
- Gauges -inc: Speedometer, Odometer, Engine Coolant Temp, Tachometer, Inclinator, Turbo/Supercharger Boost, Transmission Fluid Temp, Engine Hour Meter, Trip Odometer and Trip Computer
- HVAC -inc: Underseat Ducts- Heated Leather Steering Wheel
- Illuminated Locking Glove Box
- Instrument Panel Covered Bin, Dashboard Storage, Driver / Passenger And Rear Door Bins
- Integrated Navigation System w/Voice Activation
- Interior Trim -inc: Metal-Look Instrument Panel Insert, Genuine Wood/Chrome Door Panel Insert, Chrome/Metal-Look Interior Accents and Leather Upholstered Dashboard
- Keypad- Leather Door Trim Insert- Manual Adjustable Rear Head Restraints
- Memory Settings -inc: Door Mirrors, Steering Wheel and Pedals- Outside Temp Gauge
- Passenger Seat- Perimeter Alarm
- Power 1st Row Windows w/Driver And Passenger 1-Touch Up/Down
- Power Adjustable Pedals- Power Door Locks w/Autolock Feature- Power Rear Windows
- Power Tilt/Telescoping Steering Column- Proximity Key For Doors And Push Button Start
- Rear Cupholder
- Remote Keyless Entry w/Integrated Key Transmitter, Illuminated Entry and Panic Button

- Seats w/Leatherette Back Material- Securilock Anti-Theft Ignition (pats) Immobilizer
- Smart Device Remote Engine Start- Systems Monitor- Trip Computer
- Unique Limited 2-Tone Leather 40/Console/40 Seats -inc: premium luxury leather, multi-contour, heated/ventilated, 10-way power driver and 8-way power front passenger seats (includes power lumbar), memory, 4-way adjustable driver and passenger headrests
- Urethane Gear Shifter Material
- Voice Activated Dual Zone Front Automatic Air Conditioning w/Steering Wheel Controls

Mechanical

- 2660# Maximum Payload- 3.31 Axle Ratio- 34 Gal. Fuel Tank
- 4-Wheel Disc Brakes w/4-Wheel ABS, Front And Rear Vented Discs, Brake Assist and Hill Hold Control
- 50-State Emissions System
- 78-Amp/Hr 750CCA Maintenance-Free Battery w/Run Down Protection
- Auto Locking Hubs
- Class V Towing Equipment -inc: Hitch, Brake Controller and Trailer Sway Control
- Dual 157 Amp Alternator- Electronic Transfer Case
- Engine: 6.7L 4V OHV Power Stroke V8 Turbo Diesel B20 -inc: manual push-button engine-exhaust braking and intelligent oil-life monitor
- Firm Suspension- Front Anti-Roll Bar- Front Suspension w/Coil Springs
- GVWR: 10,000 lb Payload Package- HD Shock Absorbers
- Hydraulic Power-Assist Speed-Sensing Steering- Part-Time Four-Wheel Drive
- Single Stainless Steel Exhaust w/Chrome Tailpipe Finisher
- Solid Axle Rear Suspension w/Leaf Springs- Trailer Wiring Harness
- Transmission w/Oil Cooler
- Transmission: TorqShift 10-Speed Automatic -inc: SelectShift and selectable drive modes: normal, tow/haul, eco, deep sand/snow and slippery
- Upfitter Switches

Option Packages

Factory Installed Packages

ENGINE: 6.7L 4V OHV POWER STROKE
V8 TURBO DIESEL B20
-inc: manual push-button engine-
exhaust braking and intelligent
oil-life monitor

TRANSMISSION: TORQSHIFT 10-SPEED
AUTOMATIC
-inc: SelectShift and selectable
drive modes: normal, tow/haul,
eco, deep sand/snow and
slippery

ENGINE BLOCK HEATER
\$100

FX4 OFF-ROAD PACKAGE
-inc: Hill Descent Control, Off-
Road Specifically Tuned Shock
Absorbers, front/rear, Transfer
Case & Fuel Tank Skid Plates,
Unique FX4 Off-Road Box
Decal
\$400

ELECTRONIC-LOCKING W/3.31 AXLE
RATIO
\$390

ORDER CODE 708A

AGATE BLACK METALLIC

HIGHLAND TAN, UNIQUE LIMITED 2-
TONE LEATHER 40/CONSOLE/40
SEATS

-inc: premium luxury leather, multi-contour, heated/ventilated, 10-way power driver and 8-way power front passenger seats (includes power lumbar), memory, 4-way adjustable driver and passenger headrests

-
Option Packages Total
\$890

Texas Vehicle Exchange

tveauto.com

972-242-5350

1724 Luna Road

Carrollton, TX 75006

© 2023 AutoRevo - All rights reserved. - Powered by [AutoRevo](#)