

2013 BMW 535i xDrive M-Sport

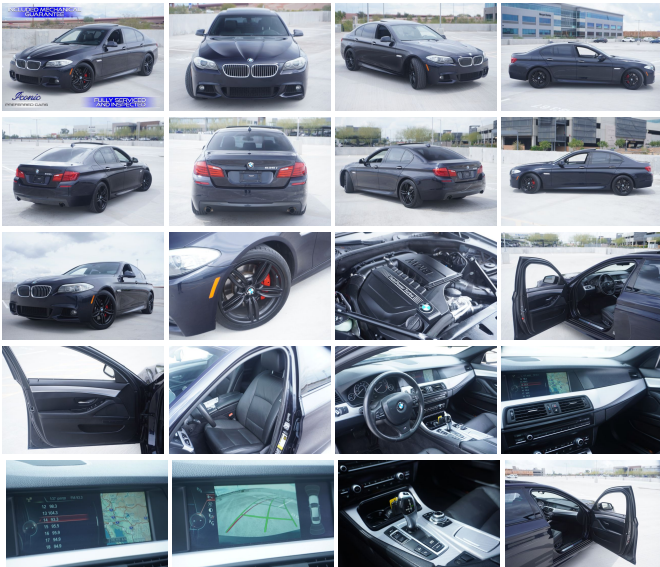
View this car on our website at iconicpreferred.com/7185847/ebrochure



Our Price **\$19,919**

Specifications:

Year:	2013
VIN:	WBAFU7C58DDU76815
Make:	BMW
Stock:	U76815
Model/Trim:	535i xDrive M-Sport
Condition:	Pre-Owned
Body:	Sedan
Exterior:	Carbon Black Metallic
Engine:	3.0-liter TwinPower Turbo inline 6-cylinder, 24-valve 300-hp engine -inc: Double-VANOS & Valvetronic variable valve control, high-precision direct injection
Interior:	Black Leather
Transmission:	8-SPEED SPORT AUTOMATIC TRANSMISSION
Mileage:	82,521
Drivetrain:	All Wheel Drive
Economy:	City 21 / Highway 30



PLEASE CALL OR TEXT 480-843-5171 FOR APPOINTMENT. INCLUDES AN ARMOR SHEILD 50/50 GUARANTEE. THIS 2013 BMW 535I WITH M-SPORT PACKAGE HAS A CERTIFIED CLEAN VEHICLE HISTORY REPORT AND HAS BEEN FULLY INSPECTED & RECONDITIONED FOR YOUR CONVENIENCE. WE MAKE THE EFFORT TO INSURE ALL OUR INVENTORY LOOK FLAWLESS, SO WHEN YOU WALK IN TO OUR SHOWROOM YOU WILL BE LOOKING AT THE MOST BEAUTIFUL CAR IN THE MARKET. THIS CAR HAS HAD A CONCOURSE DETAIL, PAINT RESTORATION, DING / DENT REMOVAL AND LEATHER RECONDITIONING. WE SPEND THE TIME AND MONEY TO INCREASE AND HELP PRESERVE THE VALUE OF YOUR NEXT VEHICLE. THIS 5-SERIES SEDAN IS POWERED BY A TWIN TURBO CHARGED 3.0 LITER IN-LINE 6 CYLINDER MOTOR THAT RUNS SMOOTH AND EFFICIENT, IT BOASTS 300 HORSE POWER AND GETS 30 MPS'S. THIS M-SPORT PACKAGE CAR HAS THE M5 INSPIRED BODY STYLING AND FEATURES M-SPORT ALLOY WHEELS, IT ALSO HAS PREMIUM PACKAGE OTIONS THAT FEATURE, POWER COMFORT LEATHER SEATS, MULTI ZONE CLIMATE CONTROL, GPS NAVIGATION, BACK UP CAMERA, POWER SLIDING GLASS MOON ROOF AND A PREMIUM AUDIO SYSTEM THAT ROCKS. COME DOWN TO OUR ALL INDOOR AND CLIMATE CONTROLLED SHOWROOM TODAY LOCATED IN SUNNY TEMPE, ARIZONA AND SEE FOR YOURSELF. PLEASE CALL OR TEXT (480)843-5171 FOR APPOINTMENT. THIS LOW ADVERTISED PRICE IS AN INTERNET ONLY OFFER. CUSTOM TAILORED FINANCING IS AVAILABLE

CASH SPECIAL, CUSTOM TAILORED FINANCING IS AVAILABLE. WE OFFER KELLY BLUE BOOK FAIR TRADE-IN VALUE ON MOST TRADES, HONEST AND FRIENDLY STAFF, 3 MONTH 3,000 MILE GUARANTEE AND DISCOUNTED PARTS & SERVICE FOR ALL CUSTOMERS. ARE YOU TIRED OF LOOKING AT CARS OTHER DEALERS ADVERTISE AS PERFECT CONDITION AND COME TO FIND OUT THEY ARE NOT WHAT YOU EXPECTED? YOU NEED TO SEE THE INVENTORY AT ICONIC MOTORCARS. WE TAKE PRIDE IN STOCKING THE CLEANEST CARS AT COMPETITIVE PRICES. ICONIC MOTORCARS INC. SERVING SOUTHERN AZ FOR OVER 21 YEARS. "IF I WOULDN'T PARK IT IN MY OWN GARAGE, YOU BET YOU WON'T FIND IT AT MY DEALERSHIP".
 WWW.ICONICPREFERRED.COM, *WHITE GLOVE DELIVERY IS SUBJECT TO A \$199.00 OR MORE FEE DEPENDENT ON DELIVERY DISTANCE.

2013 BMW 535i xDrive M-Sport
 Iconic Preferred Cars - 4808435171 - View this car on our website at iconicpreferred.com/7185847/ebrochure

Vehicle History Report : as Of 03/24/2023



Snapshot

2013 BMW 535XI



No accidents or damage reported to CARFAX



11 Service history records



5 Previous owners



Types of owners: Personal lease, Le
 Personal



Last owned in Arizona



82,521 Last reported odometer reading



FREE CARFAX Report

See the full CARFAX Report for additional information

*carfax Snapshot is a reflection of available information on the date the report was pulled. carfax is constantly being updated with new information and is subject to change at any time.

Our Location :



2013 BMW 535i xDrive M-Sport
 Iconic Preferred Cars - 4808435171 - View this car on our website at iconicpreferred.com/7185847/ebrochure

Installed Options

Interior

- 10-way power-adjustable front bucket seats -inc: 4-way lumbar support, driver seat memory
- 2-zone automatic climate control -inc: separate left/right temperature settings & air distribution controls, automatic air recirculation
- 3-spoke multi-function leather-wrapped steering wheel -inc: memory, mounted audio controls, cruise control, Bluetooth wireless communication for hands-free mobile phone
- Additional 12-V power outlets
- Anti-theft alarm system -inc: keyhead remote operation, interior motion detector
- Auto-dimming interior rear-view mirror
- Black panel display technology -inc: LCD main & trip odometer displays, warning indicators in dial faces
- Condition-based service display w/additional functions accessible through iDrive system
- Dakota leather upholstery -inc: seat surfaces, armrests in center console & doors, headrests for front seats & outer rear seats, gear shift lever boot
- Dark wood interior trim- Dual cupholders in front & rear
- Dual front sun visors w/illuminated vanity mirrors - Dynamic cruise control
- Electronic analog speedometer & tachometer- Fold-up rear seat center armrest
- Front & rear floor mats
- Front map lights & rear reading lights w/separate controls for left & right
- Front seatback storage- Fully finished trunk w/interior & remote trunk release
- Glove compartment- Integrated 3-button universal garage door opener
- Interior ambient lighting- Interior courtesy lights w/auto-dimming function
- Micro-filter ventilation system -inc: replaceable active-charcoal filters
- Open storage compartments in all doors
- Power outlet in front passenger footwell, front center console storage compartment, rear center console, trunk
- Power tilt & telescopic steering column -inc: automatic tilt-up for easy entry & exit
- Power windows -inc: key-off & "one touch" up & down operation both front & rear, anti-trapping feature, opening from remote, closing from exterior lock
- Rear window defroster
- Remote keyless entry security system -inc: selective unlocking & double-lock feature (programmed at BMW center), remote trunk opening, interior motion detector, panic feature, engine immobilizer
- Service interval indicator & expanded check control vehicle monitor system
- Split fold-down rear seat
- iDrive system -inc: on-board computer, controller, (8) programmable memory buttons

Exterior

- 18" x 8.0" radial-spoke light alloy wheels (style 237) -inc: P245/45R18 run-flat all-season tires
- 2-way power moonroof -inc: remote expanded "one-touch" operation, anti-trapping feature, sliding interior sunshade
- Adaptive brake lights- Automatic headlight on/off control- Front foglights
- Power adjustable heated folding body-color auto-dimming side-view mirrors -inc: mirror memory, auto tilt-down of passenger-side-view mirror (when car is shifted into reverse gear)
- Rain-sensing windshield wipers w/adjustable speed
- Xenon adaptive headlights -inc: dynamic auto-leveling, LED corona headlight-rings, cornering lights

Safety

- 10-way power-adjustable front bucket seats -inc: 4-way lumbar support, driver seat memory
- 2-zone automatic climate control -inc: separate left/right temperature settings & air distribution controls, automatic air recirculation
- 3-spoke multi-function leather-wrapped steering wheel -inc: memory, mounted audio controls, cruise control, Bluetooth wireless communication for hands-free mobile phone
- Additional 12-V power outlets
- Anti-theft alarm system -inc: keyhead remote operation, interior motion detector
- Auto-dimming interior rear-view mirror
- Black panel display technology -inc: LCD main & trip odometer displays, warning indicators in dial faces
- Condition-based service display w/additional functions accessible through iDrive system
- Dakota leather upholstery -inc: seat surfaces, armrests in center console & doors, headrests for front seats & outer rear seats, gear shift lever boot
- Dark wood interior trim- Dual cupholders in front & rear
- Dual front sun visors w/illuminated vanity mirrors - Dynamic cruise control
- Electronic analog speedometer & tachometer- Fold-up rear seat center armrest
- Front & rear floor mats
- Front map lights & rear reading lights w/separate controls for left & right
- Front seatback storage- Fully finished trunk w/interior & remote trunk release
- Glove compartment- Integrated 3-button universal garage door opener
- Interior ambient lighting- Interior courtesy lights w/auto-dimming function
- Micro-filter ventilation system -inc: replaceable active-charcoal filters

- Open storage compartments in all doors
- Power outlet in front passenger footwell, front center console storage compartment, rear center console, trunk
- Power tilt & telescopic steering column -inc: automatic tilt-up for easy entry & exit
- Power windows -inc: key-off & "one touch" up & down operation both front & rear, anti-trapping feature, opening from remote, closing from exterior lock
- Rear window defroster
- Remote keyless entry security system -inc: selective unlocking & double-lock feature (programmed at BMW center), remote trunk opening, interior motion detector, panic feature, engine immobilizer
- Service interval indicator & expanded check control vehicle monitor system
- Split fold-down rear seat
- iDrive system -inc: on-board computer, controller, (8) programmable memory buttons

Mechanical

- 3.0-liter TwinPower Turbo inline 6-cylinder, 24-valve 300-hp engine -inc: Double-VANOS & Valvetronic variable valve control, high-precision direct injection
- 4-wheel ventilated disc brakes w/composite front rotors
- 8-speed Steptronic automatic transmission -inc: sport & manual shift modes, adaptive transmission control (ATC)
- Auto start/stop function
- Brake energy regeneration system to convert kinetic energy into usable electrical pwr
- Direct ignition system w/knock control- Driving dynamics control w/eco pro mode
- Electronic limited-slip differential- Electronically controlled engine cooling (map cooling)
- Engine start/stop button w/Keyless-go feature
- Front multi-link double-wishbone aluminum suspension
- Rear multi-link integral-V aluminum suspension- Twin-tube gas-pressure shock absorbers
- Vehicle-speed-sensitive variable-assist (Servotronic) variable-ratio power steering
- xDrive all wheel drive system

Option Packages

Factory Installed Packages

8-SPEED SPORT AUTOMATIC TRANSMISSION
 -inc: sport & manual shift modes, steering wheel-mounted paddle shifters \$500

COLD WEATHER PKG
 -inc: heated steering wheel, heated front seats, heated rear seats, retractable headlight washers \$950

FRONT & REAR PARK DISTANCE CONTROL \$750

HARD DRIVE-BASED NAVIGATION SYSTEM
 -inc: voice feedback, voice-command system, Real Time Traffic Info, online info services \$1,900

HEATED FRONT SEATS \$500

M SPORT PKG
 -inc: 19" x 8.5" double-spoke light alloy wheels (style 351M) w/P245/40R19 run-flat all-season tires, \$2,900

PREMIUM HIGH-FIDELITY 16-SPEAKER SOUND SYSTEM \$875

PREMIUM PKG
-inc: pwr tailgate open/close,
Comfort Access keyless entry
w/multi-function remote control,
satellite radio w/1-year
subscription

\$1,500

-
REAR-VIEW CAMERA
\$400

-
ALUMINUM INTERIOR TRIM

-
CARBON BLACK METALLIC
\$550

-
BLACK, NAPPA LEATHER SEAT TRIM
\$1,000

-
Option Packages Total
\$11,825

Iconic Preferred Cars

iconicpreferred.com

4808435171

2175 E 5th ST

Tempe, Arizona 85281

© 2023 AutoRevo - All rights reserved. - Powered by AutoRevo