



2016 Mercedes-Benz AMG GT S

Website Price \$89,995

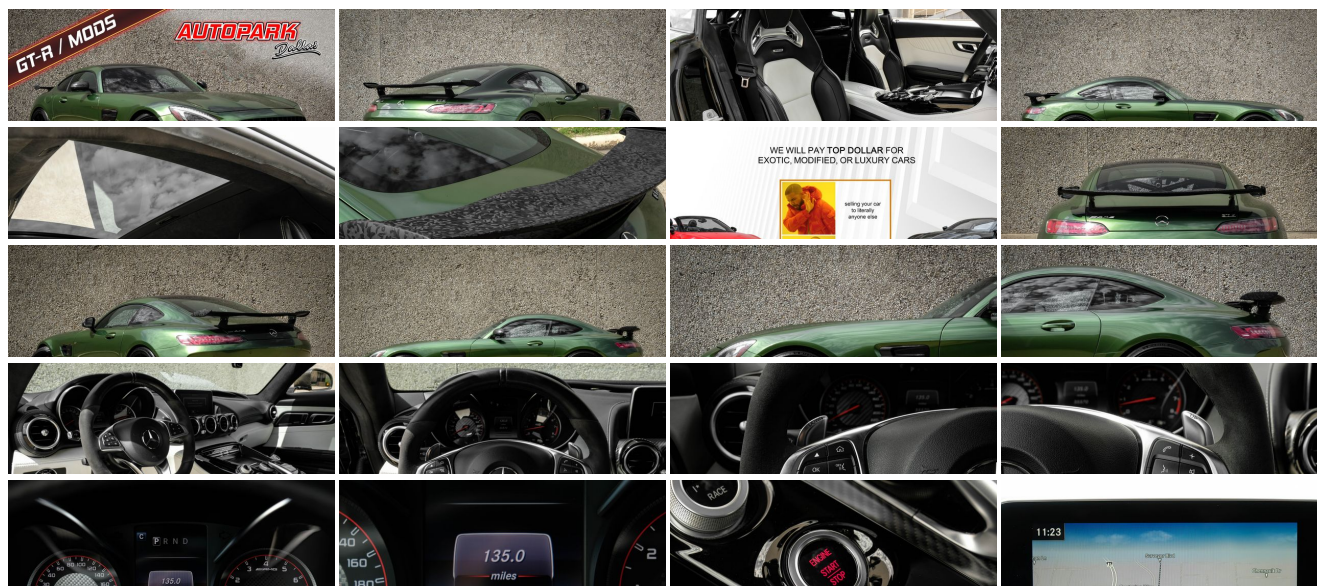
View this vehicle on our website at autoparkdallas.com



(214) 945-2601

2061 S Stemmons Fwy , Lewisville, TX 75067

Photos
Details
Contact



Specifications:

Year:	2016
VIN:	WDDYJ7JA3GA008510
Make:	Mercedes-Benz
Stock:	1240
Model/Trim:	AMG GT S
Condition:	Pre-Owned
Body:	Coupe
Exterior:	Black
Engine:	Engine: 4.0L Biturbo V8
Interior:	White
Transmission:	Auto-Shift Manual w/OD
Mileage:	55,570
Drivetrain:	Rear Wheel Drive
Economy:	City 16 / Highway 22

Vehicle Description

AutoPark Dallas is thrilled to offer you this 2016 Mercedes-Benz AMG GT S for sale! When Mercedes decided to stop production of the SLS AMG, they knew they had to bring a super sports car to market that could fill the void that the model would leave behind - enter the Mercedes AMG GT S! Meant to offer the styling cues and feel of the outgoing SLS model that was a runaway success, but at a more accessible price point and comfort level, the GT S beautifully blends the sport performance needed to fill that void, while providing a level of creature comforts and styling to match. Truly the first hardcore super sports car that Mercedes would offer while still providing all of the technology available in their portfolio. This particular GT S example take those attributes and kicks them into high gear. First we have the **Inozetek Iridescent Green Wrap** (covering every bit of the factory Black exterior) to beautifully accent the body lines of the car, and provide contrast against the numerous **Carbon Fiber Exterior** components, including the **Carbon Front Bumper, Side Sills, and Rear Diffuser**. This appearance is further enhanced by the **Titan 7 Forged Wheels in Black**, riding on **KW Coilover Springs** to perfect the fitment beautifully. A **Modified Exhaust** and **Downpipe** provide quite a bit more depth, tone, and decibel to the exhaust note as well, truly tying together the bold appearance and nature of such a great luxury sports car! This is one of the most unique AMG GT S models currently on the market, so don't miss the opportunity to put yourself in the driver seat! DO! NOT! HESISTATE!!! To swing by and check out this AMG GT S that we have parked here in our indoor 16,000 Sq Ft Showroom located in Dallas, Texas amongst our inventory of 100+ other Unique / Modified and Luxury Vehicles!

2016 Mercedes-Benz AMG GT S

MODIFICATIONS

INOZETEK IRIDESCENT GREEN WRAP

MODIFIED EXHAUST

DOWNPIPE

RENNTECH BLOW OFF VALVE ADAPTER

KW COILOVER SPRINGS

ECU TUNE

GT-R STYLE CARBON FIBER FRONT BUMPER

GT-R STYLE REAR WING (CUSTOM WRAP)

CARBON FIBER REAR DIFFUSER

CARBON FIBER SIDE FENDER AIR VENTS
ROLLBAR PAINTED IN BLACK
TITAN 7 T-S5 FORGED SPLIT 5-SPOKE WHEELS IN BLACK
NEW MICHELIN PILOT SPORT 4S TIRES

STOCK

4.0L BITURBO V8 ENGINE
AMG CARBON FIBER EXTERIOR TRIM
BURMESTER HIGH-END SURROUND SOUND SYSTEM
FIXED PANORAMA ROOF
RED BRAKE CALIPERS
BLACK EXTERIOR
PORCELAIN/BLACK NAPPA LEATHER INTERIOR
BLACK PIANO LACQUER TRIM

Financing is available!

Check out our Payment Calculator to get an estimate on your monthly payments!

OR

Get pre-approved in no time by filling out a credit application on the 'Finance' section of our website!

We also offer MANY different Extended Warranty options!

Check out our Google Reviews by *Clicking* this LINK!

Referrals and Testimonials is what our business is built on!

The team here at AutoPark Dallas, is dedicated to offering a level of customer service not usually found in the automobile industry. Thanks to years of extensive car buying / selling experience, we pursue quality used and new vehicles that are hand-picked from factory sources. Our love for automobiles and dislike of traditional dealership tactics is what motivates us to provide the service we do! The pride we take in continuing this service long after the vehicle has been delivered is what we strive for! Looking forward to making every effort to see that our customer is completely satisfied and a friend for life!

Pre-purchase inspections are always welcomed!

We also offer airport pick-up, competitive financing options, free CARFAX Reports, Car Shipping nationwide, Extended Warranty plans, and so much more!

Trade-In(s) are always accepted or sell us your used car (MODIFIED OR NOT)! Please call or text for more information about Trade-Ins or selling your car to us @ (214) 945-2601!

#(214) 945-2601

Call or Text **Anytime!**

Se habla Español

WE BUY CARS!

WWW.AUTOPARKDALLAS.COM

Installed Options

Interior

- AMG Sport leather/DINAMICA Leather/Simulated Suede Steering Wheel w/Auto Tilt-Away
- FOB Controls -inc: Cargo Access and Windows
- Gauges -inc: Speedometer, Odometer, Engine Coolant Temp, Tachometer, Turbo/Supercharger Boost, Oil Temperature, Transmission Fluid Temp, Trip Odometer and Trip Computer
- Perforated Nappa Leather Upholstery -inc: Black Roof Liner
- Power Door Locks w/Autolock Feature- Proximity Key For Doors And Push Button Start
- Remote Keyless Entry w/Integrated Key Transmitter, Illuminated Entry, Illuminated Ignition Switch and Panic Button
- Send2Benz Selective Service Internet Access- Trip Computer- 1 12V DC Power Outlet
- Air Filtration- Analog Appearance
- COMAND Integrated Navigation System w/Voice Activation
- Cargo Features -inc: Tire Mobility Kit- Cargo Net- Cargo Space Lights
- Carpet Floor Trim- Cruise Control- Day-Night Auto-Dimming Rearview Mirror
- Delayed Accessory Power- Driver And Passenger Door Bins
- Driver And Passenger Visor Vanity Mirrors w/Driver And Passenger Illumination
- Driver Foot Rest- Driver Seat- Fade-To-Off Interior Lighting
- Fixed Front Head Restraints- Fixed Rear Windows- Front Center Armrest
- Front Cupholder- Front Map Lights
- Full Carpet Floor Covering -inc: Carpet Front Floor Mats - Full Cloth Headliner
- Full Floor Console w/Covered Storage, Mini Overhead Console and 1 12V DC Power Outlet
- Garage Door Transmitter- HVAC -inc: Residual Heat Recirculation
- Illuminated Locking Glove Box- Immobilizer
- Interior Trim -inc: MB-Tex Leatherette Instrument Panel Insert, Metal-Look Door Panel Insert, Leatherette/Metal-Look Console Insert, Metal-Look Interior Accents and MB-Tex Leatherette Upholstered Dashboard
- MB-Tex Leatherette Door Trim Insert- Metal-Look Gear Shifter Material
- Outside Temp Gauge- Passenger Seat- Perimeter Alarm
- Power 1st Row Windows w/Driver And Passenger 1-Touch Up/Down
- Power Fuel Flap Locking Type- Power Heated AMG Performance Seats w/Memory
- Power Tilt/Telescoping Steering Column- Redundant Digital Speedometer
- Remote Releases -Inc: Power Cargo Access- Roll-Up Cargo Cover
- Smart Device Integration- Systems Monitor- Tracker System- Trunk/Hatch Auto-Latch
- Valet Function- Voice Activated Dual Zone Front Automatic Air Conditioning

Exterior

- Power Spoiler- Tailgate/Rear Door Lock Included w/Power Door Locks
- Wheels: 19" Fr/20" Rr AMG Twin 5-Spoke Titanium
- Auto On/Off Projector Beam Led Low/High Beam Daytime Running Auto-Leveling Directionally Adaptive Auto High-Beam Headlamps w/Delay-Off
- Black Side Windows Trim- Body-Colored Front Bumper
- Body-Colored Power Heated Side Mirrors w/Driver Auto Dimming, Power Folding and Turn Signal Indicator
- Body-Colored Rear Bumper- Chrome Door Handles- Clearcoat Paint
- Composite/Aluminum Panels- Cornering Lights- Fixed Rear Window w/Defroster
- Grille w/Chrome Bar- Headlights-Automatic Highbeams- LED Brakelights
- Liftgate Rear Cargo Access- Light Tinted Glass- Perimeter/Approach Lights

Option Packages

Factory Installed Packages

AMG CARBON FIBER EXTERIOR TRIM -inc: carbon fiber front splitter, exterior mirror housings, side fins and rear apron insert, Gloss Black finish grill lamella and side window trim	\$5,300
---	---------

FIXED PANORAMA ROOF -inc: roller shade	\$1,260
---	---------

RADIO: BURMESTER HIGH-END SURROUND SOUND SYSTEM	\$4,500
---	---------

RED BRAKE CALIPERS	
--------------------	--

BLACK PIANO LACQUER TRIM	\$750
--------------------------	-------

BLACK	
-------	--

PORCELAIN/BLACK, NAPPA EXCLUSIVE LEATHER UPHOSTERY	
--	--

Option Packages Total	\$11,810
-----------------------	----------

- Rain Detecting Variable Intermittent Wipers- Rear Fog Lamps- Tire Mobility Kit
- Tires: 19" Front/20" Rear Summer Performance

Safety

- AMG Sport leather/DINAMICA Leather/Simulated Suede Steering Wheel w/Auto Tilt-Away
- FOB Controls -inc: Cargo Access and Windows
- Gauges -inc: Speedometer, Odometer, Engine Coolant Temp, Tachometer, Turbo/Supercharger Boost, Oil Temperature, Transmission Fluid Temp, Trip Odometer and Trip Computer
- Perforated Nappa Leather Upholstery -inc: Black Roof Liner
- Power Door Locks w/Autolock Feature- Proximity Key For Doors And Push Button Start
- Remote Keyless Entry w/Integrated Key Transmitter, Illuminated Entry, Illuminated Ignition Switch and Panic Button
- Send2Benz Selective Service Internet Access- Trip Computer- 1 12V DC Power Outlet
- Air Filtration- Analog Appearance
- COMAND Integrated Navigation System w/Voice Activation
- Cargo Features -inc: Tire Mobility Kit- Cargo Net- Cargo Space Lights
- Carpet Floor Trim- Cruise Control- Day-Night Auto-Dimming Rearview Mirror
- Delayed Accessory Power- Driver And Passenger Door Bins
- Driver And Passenger Visor Vanity Mirrors w/Driver And Passenger Illumination
- Driver Foot Rest- Driver Seat- Fade-To-Off Interior Lighting
- Fixed Front Head Restraints- Fixed Rear Windows- Front Center Armrest
- Front Cupholder- Front Map Lights
- Full Carpet Floor Covering -inc: Carpet Front Floor Mats - Full Cloth Headliner
- Full Floor Console w/Covered Storage, Mini Overhead Console and 1 12V DC Power Outlet
- Garage Door Transmitter- HVAC -inc: Residual Heat Recirculation
- Illuminated Locking Glove Box- Immobilizer
- Interior Trim -inc: MB-Tex Leatherette Instrument Panel Insert, Metal-Look Door Panel Insert, Leatherette/Metal-Look Console Insert, Metal-Look Interior Accents and MB-Tex Leatherette Upholstered Dashboard
- MB-Tex Leatherette Door Trim Insert- Metal-Look Gear Shifter Material
- Outside Temp Gauge- Passenger Seat- Perimeter Alarm
- Power 1st Row Windows w/Driver And Passenger 1-Touch Up/Down
- Power Fuel Flap Locking Type- Power Heated AMG Performance Seats w/Memory
- Power Tilt/Telescoping Steering Column- Redundant Digital Speedometer
- Remote Releases -Inc: Power Cargo Access- Roll-Up Cargo Cover
- Smart Device Integration- Systems Monitor- Tracker System- Trunk/Hatch Auto-Latch
- Valet Function- Voice Activated Dual Zone Front Automatic Air Conditioning

Mechanical

- 17 Gal. Fuel Tank- 3.67 Axle Ratio
- 4-Wheel Disc Brakes w/4-Wheel ABS, Front And Rear Vented Discs, Brake Assist, Hill Hold Control and Electric Parking Brake
- Automatic w/Driver Control Ride Control Sport Tuned Adaptive Suspension
- Double Wishbone Front Suspension w/Coil Springs
- Double Wishbone Rear Suspension w/Coil Springs
- Dual Stainless Steel Exhaust w/Polished Tailpipe Finisher
- Electro-Mechanical Limited Slip Differential- Engine Auto Stop-Start Feature
- Engine Oil Cooler- Engine: 4.0L Biturbo V8- Front And Rear Anti-Roll Bars
- Gas-Pressurized Shock Absorbers- Hydraulic Power-Assist Speed-Sensing Steering
- Rear-Wheel Drive- Transmission w/Driver Selectable Mode
- Transmission: 7-Speed Dual-Clutch Rear Transaxle



Auto Park Dallas

View this car on our website at autoparkdallas.com/7185401

Website: autoparkdallas.com

Phone: (214) 945-2601

Map: 2061 S Stemmons Fwy, Lewisville, TX 75067

