

2014 Lexus ES 350 Sedan

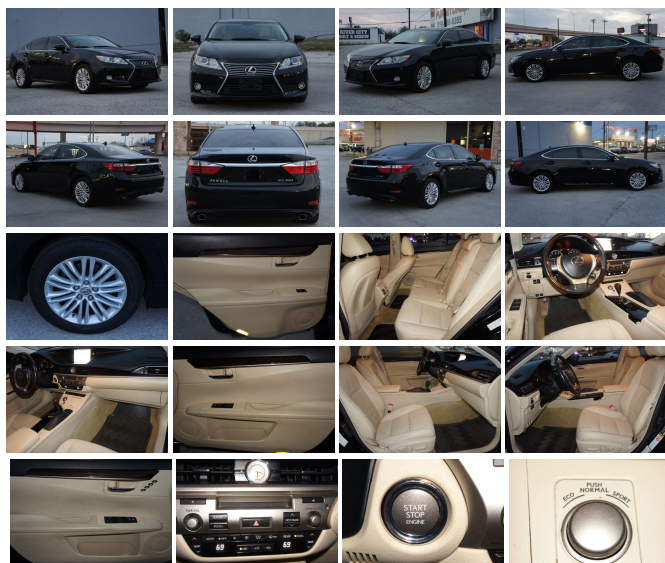
View this car on our website at randlautogroup.com/7184818/ebrochure



Our Price **\$0**

Specifications:

Year:	2014
VIN:	JTHBK1GG1E2107676
Make:	Lexus
Stock:	P6159
Model/Trim:	ES 350 Sedan
Condition:	Pre-Owned
Body:	Sedan
Exterior:	blk
Engine:	Engine: 3.5L V6 DOHC 24V Dual VVT-i
Interior:	Parchment
Mileage:	102,242
Drivetrain:	Front Wheel Drive
Economy:	City 21 / Highway 31



2014 Lexus ES 350 Sedan

R&L Certified Auto Group - (210) 314-4774 - View this car on our website at randlautogroup.com/7184818/ebrochure

Our Location :



2014 Lexus ES 350 Sedan

R&L Certified Auto Group - (210) 314-4774 - View this car on our website at randlautogroup.com/7184818/ebrochure

Installed Options

Interior

- 10-Way Power Adjustable Front Seats -inc: power fore/aft slide, recline, front and rear vertical cushion height and lumbar
- Bucket Front Seats- 8-Way Driver Seat- 8-Way Passenger Seat
- Bench Front Facing Rear Seat- Manual Tilt/Telescoping Steering Column
- Gauges -inc: Speedometer, Odometer, Engine Coolant Temp, Tachometer, Trip Odometer and Trip Computer
- Power Rear Windows- Leather/Metal-Look Steering Wheel- Front Cupholder
- Rear Cupholder- Compass- Proximity Key For Doors And Push Button Start
- Valet Function
- Remote Keyless Entry w/Integrated Key Transmitter, 4 Door Curb/Courtesy, Illuminated Entry, Illuminated Ignition Switch and Panic Button
- Remote Releases -Inc: Power Cargo Access and Power Fuel
- HomeLink Garage Door Transmitter- Cruise Control w/Steering Wheel Controls
- Dual Zone Front Automatic Air Conditioning
- HVAC -inc: Underseat Ducts and Console Ducts - Illuminated Locking Glove Box
- Driver Foot Rest- NuLuxe Interior
- Interior Trim -inc: Metal-Look/Piano Black Instrument Panel Insert, Piano Black Door Panel Insert, Piano Black Console Insert and Chrome/Metal-Look Interior Accents
- Full Cloth Headliner- Leatherette Door Trim Insert- Leather/Chrome Gear Shifter Material
- Day-Night Auto-Dimming Rearview Mirror
- Driver And Passenger Visor Vanity Mirrors w/Driver And Passenger Illumination
- Full Floor Console w/Covered Storage, Mini Overhead Console and 1 12V DC Power Outlet
- Front And Rear Map Lights- Delay Off Interior Lighting
- Full Carpet Floor Covering -inc: Carpet Front And Rear Floor Mats
- Carpet Floor Trim and Carpet Trunk Lid/Rear Cargo Door Trim - Cargo Space Lights
- FOB Controls -inc: Cargo Access, Windows and Sunroof/Convertible Roof
- Tracker System- Instrument Panel Covered Bin, Driver And Passenger Door Bins
- Power 1st Row Windows w/Front And Rear 1-Touch Up/Down - Delayed Accessory Power
- Power Door Locks w/Autolock Feature- Systems Monitor- Trip Computer

- Outside Temp Gauge- Analog Appearance
- Manual Anti-Whiplash Adjustable Front Head Restraints and Manual Adjustable Rear Head Restraints
- Front Center Armrest and Rear Center Armrest w/Pass-Thru
- 2 Seatback Storage Pockets- Perimeter Alarm- Immobilizer- 1 12V DC Power Outlet
- Air Filtration

Exterior

- Wheels: 17" x 7JJ Split 6-Spoke Aluminum Alloy - Tires: P215/55R17 AS
- Steel Spare Wheel- Compact Spare Tire Mounted Inside Under Cargo- Clearcoat Paint
- Express Open/Close Sliding And Tilting Glass 1st Row Sunroof w/Sunshade
- Body-Colored Front Bumper- Body-Colored Rear Bumper- Chrome Side Windows Trim
- Body-Colored Door Handles
- Body-Colored Power w/Tilt Down Heated Auto Dimming Side Mirrors w/Manual Folding and Turn Signal Indicator
- Fixed Rear Window w/Defroster- Light Tinted Glass- Variable Intermittent Wipers
- Front Windshield -inc: Sun Visor Strip- Fully Galvanized Steel Panels
- Metal-Look Grille w/Chrome Surround- Trunk Rear Cargo Access
- Auto On/Off Projector Beam Halogen Daytime Running Headlamps w/Delay-Off
- Front Fog Lamps- Perimeter/Approach Lights- LED Brakelights

Safety

- 10-Way Power Adjustable Front Seats -inc: power fore/aft slide, recline, front and rear vertical cushion height and lumbar
- Bucket Front Seats- 8-Way Driver Seat- 8-Way Passenger Seat
- Bench Front Facing Rear Seat - Manual Tilt/Telescoping Steering Column
- Gauges -inc: Speedometer, Odometer, Engine Coolant Temp, Tachometer, Trip Odometer and Trip Computer
- Power Rear Windows- Leather/Metal-Look Steering Wheel- Front Cupholder
- Rear Cupholder- Compass- Proximity Key For Doors And Push Button Start
- Valet Function
- Remote Keyless Entry w/Integrated Key Transmitter, 4 Door Curb/Courtesy, Illuminated Entry, Illuminated Ignition Switch and Panic Button
- Remote Releases -inc: Power Cargo Access and Power Fuel
- HomeLink Garage Door Transmitter- Cruise Control w/Steering Wheel Controls
- Dual Zone Front Automatic Air Conditioning
- HVAC -inc: Underseat Ducts and Console Ducts - Illuminated Locking Glove Box
- Driver Foot Rest- NuLuxe Interior
- Interior Trim -inc: Metal-Look/Piano Black Instrument Panel Insert, Piano Black Door Panel Insert, Piano Black Console Insert and Chrome/Metal-Look Interior Accents
- Full Cloth Headliner- Leatherette Door Trim Insert- Leather/Chrome Gear Shifter Material
- Day-Night Auto-Dimming Rearview Mirror
- Driver And Passenger Visor Vanity Mirrors w/Driver And Passenger Illumination
- Full Floor Console w/Covered Storage, Mini Overhead Console and 1 12V DC Power Outlet
- Front And Rear Map Lights- Delay Off Interior Lighting
- Full Carpet Floor Covering -inc: Carpet Front And Rear Floor Mats
- Carpet Floor Trim and Carpet Trunk Lid/Rear Cargo Door Trim - Cargo Space Lights
- FOB Controls -inc: Cargo Access, Windows and Sunroof/Convertible Roof
- Tracker System- Instrument Panel Covered Bin, Driver And Passenger Door Bins
- Power 1st Row Windows w/Front And Rear 1-Touch Up/Down - Delayed Accessory Power
- Power Door Locks w/Autolock Feature- Systems Monitor- Trip Computer
- Outside Temp Gauge- Analog Appearance
- Manual Anti-Whiplash Adjustable Front Head Restraints and Manual Adjustable Rear Head Restraints
- Front Center Armrest and Rear Center Armrest w/Pass-Thru
- 2 Seatback Storage Pockets- Perimeter Alarm- Immobilizer- 1 12V DC Power Outlet
- Air Filtration

Mechanical

- Engine: 3.5L V6 DOHC 24V Dual VVT-i
 - Transmission: 6-Spd Sequential Shift Auto (ECT-i)
 - Transmission w/Driver Selectable Mode and Oil Cooler- Front-Wheel Drive
 - 3.46 Axle Ratio- Battery w/Run Down Protection- Gas-Pressurized Shock Absorbers
 - Front And Rear Anti-Roll Bars- Electric Power-Assist Speed-Sensing Steering
 - 17.2 Gal. Fuel Tank- Quasi-Dual Stainless Steel Exhaust w/Polished Tailpipe Finisher
 - Strut Front Suspension w/Coil Springs- Strut Rear Suspension w/Coil Springs
 - 4-Wheel Disc Brakes w/4-Wheel ABS, Front Vented Discs and Brake Assist
-

R&L Certified Auto Group

randlautogroup.com

(210) 314-4774

11723 IH 35N

San Antonio, TX 78233

© 2023 AutoRevo - All rights reserved. - Powered by [AutoRevo](#)