

## 2012 Chevrolet Camaro 1LT

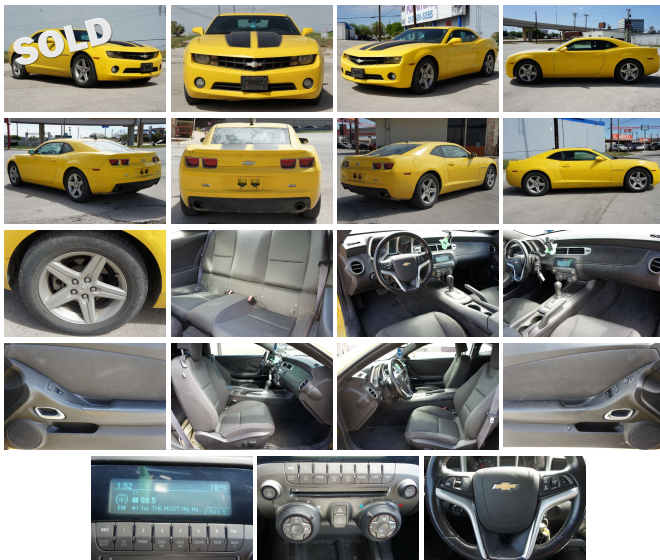
View this car on our website at [randlautogroup.com/7184817/ebrochure](http://randlautogroup.com/7184817/ebrochure)



Our Price **\$0**

### Specifications:

<b>Year:</b>	2012
<b>VIN:</b>	2G1FB1E38C9131709
<b>Make:</b>	Chevrolet
<b>Stock:</b>	P6152
<b>Model/Trim:</b>	Camaro 1LT
<b>Condition:</b>	Pre-Owned
<b>Body:</b>	Coupe
<b>Exterior:</b>	Rally Yellow
<b>Engine:</b>	ENGINE, 3.6L SIDI DOHC V6 VVT
<b>Interior:</b>	Black Upgraded Cloth Interior Cloth
<b>Transmission:</b>	TRANSMISSION, 6-SPEED AUTOMATIC
<b>Mileage:</b>	118,344
<b>Drivetrain:</b>	Rear Wheel Drive
<b>Economy:</b>	City 18 / Highway 29



2012 Chevrolet Camaro 1LT

R&L Certified Auto Group - (210) 314-4774 - View this car on our website at [randlautogroup.com/7184817/ebrochure](http://randlautogroup.com/7184817/ebrochure)

## Our Location :



2012 Chevrolet Camaro 1LT

R&L Certified Auto Group - (210) 314-4774 - View this car on our website at [randlautogroup.com/7184817/ebrochure](http://randlautogroup.com/7184817/ebrochure)

## Installed Options

### Interior

- Seats, front Sport bucket includes adjustable head restraints and folding rear seat with trunk pass-through (Includes passenger-side seatback map pocket.)
- Seat adjuster, driver, 6-way power (fore/aft, up/down, tilt) with power recliner
- Seat adjuster, front passenger, 6-way power (fore/aft, up/down, tilt) with power recliner
- Seat trim, Sport Cloth seat trim - Console, floor, with armrest- Floor mats, carpeted front
- Dead pedal, driver- Steering wheel, 3-spoke, urethane
- Steering column, manual rake and telescopic
- Instrumentation, analog with Driver Information Center display, includes speedometer, tachometer, fuel gauge and engine temperature gauge
- Compass, located in Driver Information Center
- Door locks, power programmable with lockout protection- Remote Keyless Entry
- Windows, power with driver and passenger Express-Down/Up
- Cruise control, electronic with set and resume speed, steering wheel mounted
- Trunk release, remote, located on driver-side- Air conditioning, single-zone manual
- Air filtration system with pollen filter- Defogger, rear-window, electric- Glovebox, lockable
- Power outlets, 2 auxiliary 1 located in center console storage area and 1 located at front of center console
- Cup holders, 2 front- Map pockets, front doors- Mirror, inside rearview manual day/night
- Visors, driver and front passenger vanity mirrors, covered- Lighting, front reading lamps
- Lighting, interior dome with illuminated entry and theater dimming
- Coat hooks, driver- and passenger-side rear- Shift knob, urethane

### Exterior

- Wheels, 18" (45.7 cm) painted aluminum
- Tires, P245/55R18 touring, blackwall, all-season
- Tire sealant and inflator kit in place of spare tire - Molding, Black roof ditch
- Fascias, front and rear body-color with front grille and rear diffuser - Spoiler, rear
- Moldings, body-color lower rocker- Hood blanket with debossed Chevrolet bowtie

- Headlamps, halogen composite with automatic exterior lamp control
- Fog lamps (When (WRS) RS Package is ordered, fog lamps act as Daytime Running Lamps.)
- Mirrors, outside power-adjustable body-color- Wipers, front intermittent
- Door handles, body-color

## Safety

- Seats, front Sport bucket includes adjustable head restraints and folding rear seat with trunk pass-through (Includes passenger-side seatback map pocket.)
- Seat adjuster, driver, 6-way power (fore/aft, up/down, tilt) with power recliner
- Seat adjuster, front passenger, 6-way power (fore/aft, up/down, tilt) with power recliner
- Seat trim, Sport Cloth seat trim- Console, floor, with armrest- Floor mats, carpeted front
- Dead pedal, driver- Steering wheel, 3-spoke, urethane
- Steering column, manual rake and telescopic
- Instrumentation, analog with Driver Information Center display, includes speedometer, tachometer, fuel gauge and engine temperature gauge
- Compass, located in Driver Information Center
- Door locks, power programmable with lockout protection- Remote Keyless Entry
- Windows, power with driver and passenger Express-Down/Up
- Cruise control, electronic with set and resume speed, steering wheel mounted
- Trunk release, remote, located on driver-side- Air conditioning, single-zone manual
- Air filtration system with pollen filter- Defogger, rear-window, electric- Glovebox, lockable
- Power outlets, 2 auxiliary 1 located in center console storage area and 1 located at front of center console
- Cup holders, 2 front- Map pockets, front doors- Mirror, inside rearview manual day/night
- Visors, driver and front passenger vanity mirrors, covered- Lighting, front reading lamps
- Lighting, interior dome with illuminated entry and theater dimming
- Coat hooks, driver- and passenger-side rear- Shift knob, urethane

## Mechanical

- Engine, 3.6L SIDI DOHC V6 VVT (323 hp [240.8 kW] @ 6800 rpm, 278 lb-ft of torque [375.3 N-m] @ 4800 rpm)
- Transmission, 6-speed manual- Axle, 3.27 ratio- Rear wheel drive- Alternator, 150 amps
- Battery, maintenance-free with rundown protection and retained accessory power
- Suspension, Sport- Steering, power, variable ratio
- Brakes, 4-wheel antilock, 4-wheel disc (Single piston front brakes with super corner rear brakes.)
- Exhaust, dual-outlet stainless-steel with polished tips

## Option Packages

### Factory Installed Packages

ENGINE, 3.6L SIDI DOHC V6 VVT  
 (323 hp [240.8 kW] @ 6800 rpm,  
 278 lb-ft of torque [375.3 N-m]  
 @ 4800 rpm)

TRANSMISSION, 6-SPEED AUTOMATIC  
 includes TAPshift manual shift  
 controls on steering wheel \$995

Option Packages Total  
 \$995

R&L Certified Auto Group

[randlautogroup.com](http://randlautogroup.com)

(210) 314-4774

11723 IH 35N

San Antonio, TX 78233

© 2023 AutoRevo - All rights reserved. - Powered by AutoRevo

