



2010 Toyota FJ Cruiser TEXAS CAR NO RUST

Our Price \$22,990

Retail Value \$24,990

View this vehicle on our website at extremesportscars.com



[469-381-7040](tel:469-381-7040)

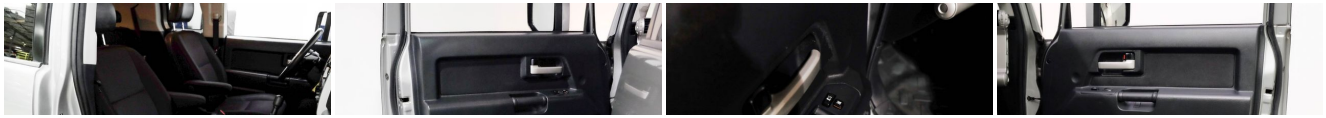
15001 E Beltwood Parkway, Addison, TX 75001

Photos

Details

Contact





Specifications:

Year:	2010
VIN:	JTEZU4BF0AK009514
Make:	Toyota
Model/Trim:	FJ Cruiser TEXAS CAR NO RUST
Condition:	Pre-Owned
Body:	SUV
Exterior:	Silver Fresco Metallic
Engine:	4.0L DOHC SFI 24-valve V6 engine w/VVT-i
Interior:	Dark Charcoal Cloth
Mileage:	110,676
Drivetrain:	Rear Wheel Drive
Economy:	City 17 / Highway 22

Vehicle Description

2010 TOYOTA FJ Cruiser

Silver Exterior

Black Leather Interior

Convenience PKG inc. spare tire cover, rear window wiper, aluminum exterior pwr mirrors, illuminated markers, Remote keyless entry, auto-dimming rearview mirror w/backup camera, rear privacy glass, cruise control, \$2,275

Rear Differential Lock \$340

17" X 7.5" Aluminum Wheels, P265/70R17 tires, full-size spare tire \$650

Daytime Running Lights \$40

Backup Camera

Steering Wheel Controls

Hands-Free Communication

Air Conditioning

AM/FM Radio

CD Player

Power Windows/Locks

Power Mirrors

Cruise Control

Traction Control

External Temperature

Compass

Automatic Transmission

4.0L DOHC SFI 24-valve V6 engine w/VVT-i

Well Maintained

Very Clean!

Professionally Detailed

And Much More!!

Come see our indoor showroom in Dallas with 70+ carefully selected luxury and performance vehicles! Our inventory includes models from Lexus, BMW, Dodge, Toyota, and more. Our prices and selection can't be beaten! Every vehicle is hand-picked, thoroughly inspected for quality, and is lovingly detailed. From luxurious midsize sedans to sophisticated crossover SUVs, we have it all.

Extreme Sportcars Inc is located in Addison at 15001 E Beltwood Parkway. With a large variety of quality vehicles in stock, we are sure to find the car you need. If we don't have it in our inventory, use our vehicle finder service and we will locate it for you.

From Monday through Saturday, our friendly staff is ready to provide you with top-notch service. Browse our inventory, give us a call or come by and see us in person, so you can see how we make buying your next car easier!

Installed Options

Interior

- Pwr door locks
- Water resistant fabric bucket seats -inc: 8-way driver & 4-way front passenger manually adjustable seats, passenger seat back pocket
- (4) assist handles- (4) cupholders/(2) bottle holders- (4) door-mounted map pockets
- 3-spoke tilt steering wheel w/silver trim
- 60/40 split 2nd row seats -inc: removable bottom cushions, fold-down seatback
- Adjustable headrests in all rows- Color-keyed center instrumentation console
- Defroster-linked air conditioning- Digital clock
- Dual sun visors w/driver-side vanity mirror- Engine immobilizer- Key cylinder light
- Map lamps- Pwr windows- Rear window defogger w/intelligent timer
- Remote hood release (2009)- Rubber-like floor in cabin & cargo area
- Silver-trimmed instrument panel -inc: speedometer, tachometer, fuel, temp, voltmeters
- Upper dash mounted map/glove box (2009)

Exterior

- 17" x 7.5" black steel wheels - Full-size spare tire w/rear door mount
- Black bumpers w/metallic silver trim- Black overfenders w/integrated mud flaps
- Multi-reflector halogen headlamps- P265/70R17 tires
- Rear hatch glass window w/release lever- Silver painted manual mirrors
- Silver trim door handles- Washer-linked variable intermittent windshield wipers
- White roof

Safety

- Pwr door locks
- Water resistant fabric bucket seats -inc: 8-way driver & 4-way front passenger manually adjustable seats, passenger seat back pocket
- (4) assist handles- (4) cupholders/(2) bottle holders- (4) door-mounted map pockets
- 3-spoke tilt steering wheel w/silver trim
- 60/40 split 2nd row seats -inc: removable bottom cushions, fold-down seatback
- Adjustable headrests in all rows- Color-keyed center instrumentation console
- Defroster-linked air conditioning- Digital clock
- Dual sun visors w/driver-side vanity mirror- Engine immobilizer- Key cylinder light
- Map lamps- Pwr windows- Rear window defogger w/intelligent timer
- Remote hood release (2009)- Rubber-like floor in cabin & cargo area
- Silver-trimmed instrument panel -inc: speedometer, tachometer, fuel, temp, voltmeters
- Upper dash mounted map/glove box (2009)

Mechanical

- Automatic limited slip differential
- ** ALL STANDARDS ARE 2010 UNLESS OTHERWISE NOTED **
- 4-link rear suspension w/lateral rod, coil springs
- 4.0L DOHC SFI 24-valve V6 engine w/VVT-i
- 5-speed automatic electronically controlled transmission (ECT) - 5330# GVWR
- Front & rear stabilizer bar- High-mounted double-wishbone front suspension
- Pwr 4-wheel ventilated front/solid rear disc brakes
- Pwr variable gear rack & pinion steering - Rear wheel drive

Extreme Sportcars Inc

Extreme Sportcars Inc

View this car on our website at extremesportscars.com/7184066

Website: extremesportscars.com

Phone: [469-381-7040](tel:469-381-7040)

Map: [15001 E Beltwood Parkway, Addison, TX 75001](#)

