



2013 Chevrolet Corvette 427

Website Price \$53,995

View this vehicle on our website at autoparkdallas.com



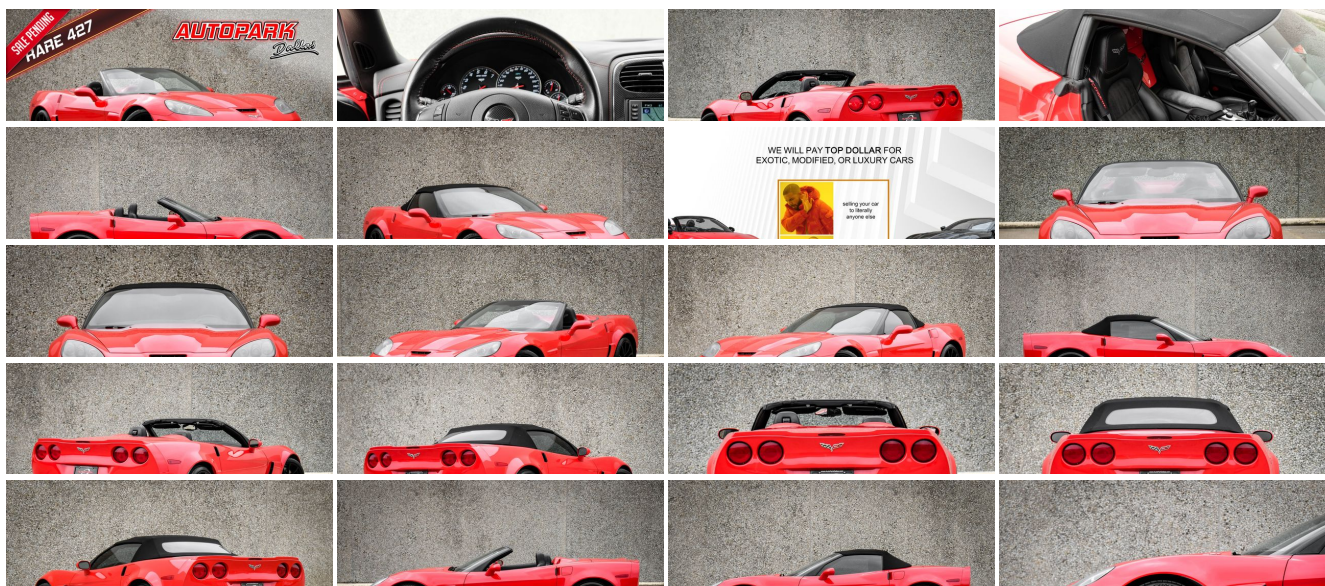
(214) 945-2601

2061 S Stemmons Fwy , Lewisville, TX 75067

Photos

Details

Contact



Specifications:

Year:	2013
VIN:	1G1YZ3DE2D5700488
Make:	Chevrolet
Stock:	1219
Model/Trim:	Corvette 427
Condition:	Pre-Owned
Body:	Convertible
Exterior:	Torch Red
Engine:	ENGINE, 7.0L (427 CI) LS7 V8 SFI
Interior:	Ebony Leather
Transmission:	TRANSMISSION, 6-SPEED MANUAL, SHORT-THROW
Mileage:	52,253
Drivetrain:	Rear Wheel Drive
Economy:	City 15 / Highway 24

Vehicle Description

AutoPark Dallas is thrilled to offer you this 2013 Chevrolet Corvette 427 for sale! The Corvette Z06 has always been one of the best American performance cars on the road, and since almost anyone can remember, every enthusiast was begging Chevrolet to release a drop top version of the iconic muscle car. While Chevy to this day claims the 427 isn't a convertible Z06, enthusiasts know otherwise - the venerable **LS7 (7.0L V8) Engine** of course comes equipped, the same **6-Speed Manual Transmission** is the only gearbox available along with the **Short Throw Shifter**, the same **Magnetic Ride Control**, and the same **Z06 carbon fiber body components** (hood, fenders, floor panels, etc) are utilized. The only difference between a true Z06 and the 427 simply come down to the lack of roof, and the different composition of the body frame (steel vs aluminum). For the C6 generation, this is simply the ONLY way to acquire what is essentially a convertible Z06, produced ONLY for 2013 in rather limited numbers. As if that wasn't desirable enough, this particular examples comes equipped with pretty much every desirable option available - **1SC with Red Contrast Stitching**, **Calipers in Red**, and the **Cup Style Lightweight Aluminum Wheels in Black**! With a **CLEAN CARFAX** and the utmost care taken by prior ownership to uphold the rarity and value of this beautiful example, this is one rare Corvette 427 that won't disappoint. DO! NOT! HESISTATE!!! To swing by and check out this Corvette 427 that we have parked here in our indoor 16,000 Sq Ft Showroom located in Dallas, Texas amongst our inventory of 100+ other Unique / Modified and Luxury Vehicles!

2013 Chevrolet Corvette 427

****CLEAN CARFAX****

7.0L (427 CI) LS7 V8

6-SPEED MANUAL TRANSMISSION

1SC PREFERRED EQUIPMENT GROUP

RED CONTRAST STITCHING

CALIPERS IN RED

SHORT THROW SHIFTER

CUP STYLE LIGHTWEIGHT ALUMINUM WHEELS IN BLACK

BATTERY PROTECTION PACKAGE

BLACK HEADLAMP COLOR

3.42 RATIO LIMITED SLIP DIFFERENTIAL

BOSE PREMIUM AUDIO SYSTEM WITH NAVIGATION

REARVIEW CAMERA

MAGNETIC RIDE CONTROL

SPORT BUCKET SEATS

FRONT LICENSE PLATE BRACKET

TORCH RED

EBONY LEATHER INTERIOR

BLACK TOP

Financing is available!

Check out our Payment Calculator to get an estimate on your monthly payments!

OR

Get pre-approved in no time by filling out a credit application on the 'Finance' section of our website!

We also offer MANY different Extended Warranty options!

Check out our Google Reviews by *Clicking* this LINK!

Referrals and Testimonials is what our business is built on!

The team here at AutoPark Dallas, is dedicated to offering a level of customer service not usually found in the automobile industry. Thanks to years of extensive car buying / selling experience, we pursue quality used and new vehicles that are hand-picked from factory sources. Our love for automobiles and dislike of traditional dealership tactics is what motivates us to provide the service we do! The pride we take in continuing this service long after the vehicle has been delivered is what we strive for! Looking forward to making every effort to see that our customer is completely satisfied and a friend for life!

Pre-purchase inspections are always welcomed!

We also offer airport pick-up, competitive financing options, free CARFAX Reports, Car Shipping nationwide, Extended Warranty plans, and so much more!

Trade-In(s) are always accepted or sell us your used car (MODIFIED OR NOT)! Please call or text for more information about Trade-Ins or selling your car to us @ (214) 945-2601!

#(214) 945-2601

Call or Text *Anytime!*

Se habla Español

WE BUY CARS!

WWW.AUTOPARKDALLAS.COM

Installed Options

Interior

- Defogger, rear-window, electric
- Door locks, power programmable with lockout protection- Floor mats, carpeted
- Keyless Access with push button start and 2 remote transmitters that enable automatic door unlock and open by touching door switch
- OnStar Turn-by-Turn Navigation
- Seats, Sport front bucket with perforated leather seating surfaces includes back angle adjustment
- Steering column, Tilt-Wheel, manual- Steering column, power telescopic with manual tilt
- Stolen Vehicle Assistance
- Theft-deterrent system, vehicle push button start, immobilizer and audible visual alarm
- Air conditioning, dual-zone automatic climate control with individual climate settings for driver and right-front passenger and outside temperature display
- Air filtration system with pollen filter- Cargo net, in rear compartment area
- Console, floor 2 covered cup holders, ashtray with cigar lighter, auxiliary power outlet and CD storage
- Cruise control, electronic with set and resume speed
- Custom Leather Wrapped Interior Package features leather-wrapped upper instrument panel, upper door trim panels and console storage cover. Exclusive leather color and two-tone design with suede inserts includes seat headrest crossed flag embroidery and enhanced armrest padding. Special gunmetal pattern console trim plate
- Head-Up Display with dot-matrix readouts for street mode, track mode with g-meter, vehicle speed, engine rpm and readings from key gauges including water temperature and oil pressure
- Instrumentation, electronic analog with Driver Information Center and 2-line display
- Lighting, interior with courtesy, cargo and glovebox
- Memory Package, recalls 2 driver "presets" for 6-way power seat, outside mirrors and telescoping steering column
- Mirror, inside rearview auto-dimming with compass, includes dual reading lights
- Oil life monitoring system- Seat adjuster, driver 6-way power
- Seat adjuster, front passenger 6-way power
- Seat adjusters, power bolster and power lumbar
- Seats, heated driver and front passenger - Steering wheel, 3-spoke leather-wrapped
- Storage, with lockable glovebox and center console (Also includes 1 rear storage compartment with cover)
- Trunk release, push button open
- Universal Home Remote includes garage door opener, 3-channel programmable, located on driver visor
- Visors, driver and front passenger illuminated vanity mirrors
- Windows, power with driver and passenger Express-Down

Exterior

- Convertible top, power folding includes glass rear window with integral defogger
- Spoiler, full-width, ZR1-style, body-color
- Tires, front P285/30ZR19 Michelin PS2 and rear P335/25ZR20 Michelin PS2 run flat
- Wheels, machined-face, cup style lightweight aluminum 19" x 10" (48.3 cm x 25.4 cm) front and 20" x 12" (50.8 cm x 30.48 cm) rear
- Fog lamps, front, integral in front fascia- Glass, Solar-Ray light-tinted
- Headlamps, dual projector lamps, Xenon, High-Intensity Discharge (HID) low-beam tungsten-halogen high-beam with automatic exterior lamp control
- Hood, Carbon Fiber with raised center
- Mirrors, outside heated power-adjustable and driver-side auto-dimming, body-color
- Wipers, front intermittent

Safety

- Defogger, rear-window, electric
- Door locks, power programmable with lockout protection- Floor mats, carpeted
- Keyless Access with push button start and 2 remote transmitters that enable automatic door unlock and open by touching door switch
- OnStar Turn-by-Turn Navigation
- Seats, Sport front bucket with perforated leather seating surfaces includes back angle adjustment

Option Packages

Factory Installed Packages

ENGINE, 7.0L (427 CI) LS7 V8 SFI
with dry sump oil system (505 hp [376.6 kW] @
6300 rpm, 470 lb-ft of torque [634.5 N-m] @
4800 rpm)

TRANSMISSION, 6-SPEED MANUAL, SHORT-THROW
includes launch control

BATTERY PROTECTION PACKAGE
\$100

BLACK HEADLAMP COLOR OVERRIDE
substitute body-color headlamps for contrasting
color
\$590

CALIPERS, RED
\$595

LICENSE PLATE BRACKET, FRONT
\$15

RED CUSTOM LEATHER STITCH
includes seats, instrument panel, doors,
console, shifter and boot
\$395

REAR AXLE, 3.42 RATIO, LIMITED SLIP

EMISSIONS, FEDERAL REQUIREMENTS

TORCH RED

1SC PREFERRED EQUIPMENT GROUP
includes Standard Equipment
\$9,500

AUDIO SYSTEM WITH NAVIGATION, AM/FM STEREO WITH CD
PLAYER, MP3 PLAYBACK AND DVD-BASED TOUCH-SCREEN
NAVIGATION
USB port, auxiliary input jack, seek-and-scan,
digital clock, auto-tone control, Radio Data
System (RDS), automatic volume, TheftLock,
6.5" LCD color display and voice recognition.

EBONY, CUSTOM LEATHER WRAPPED SEATING SURFACES
(Custom leather wrap with embroidery. Includes
specific console trim plate.)

SEATS, SPORT FRONT BUCKET WITH PERFORATED
LEATHER SEATING SURFACES
includes back angle adjustment

BLACK TOP

WHEELS, BLACK, CUP STYLE LIGHTWEIGHT ALUMINUM
19" x 10" (48.3 cm x 25.4 cm) front and 20" x 12"
(50.8 cm x 30.48 cm) rear
\$495

- Steering column, Tilt-Wheel, manual- Steering column, power telescopic with manual tilt
- Stolen Vehicle Assistance
- Theft-deterrent system, vehicle push button start, immobilizer and audible visual alarm
- Air conditioning, dual-zone automatic climate control with individual climate settings for driver and right-front passenger and outside temperature display
- Air filtration system with pollen filter- Cargo net, in rear compartment area
- Console, floor 2 covered cup holders, ashtray with cigar lighter, auxiliary power outlet and CD storage
- Cruise control, electronic with set and resume speed
- Custom Leather Wrapped Interior Package features leather-wrapped upper instrument panel, upper door trim panels and console storage cover. Exclusive leather color and two-tone design with suede inserts includes seat headrest crossed flag embroidery and enhanced armrest padding. Special gunmetal pattern console trim plate
- Head-Up Display with dot-matrix readouts for street mode, track mode with g-meter, vehicle speed, engine rpm and readings from key gauges including water temperature and oil pressure
- Instrumentation, electronic analog with Driver Information Center and 2-line display
- Lighting, interior with courtesy, cargo and glovebox
- Memory Package, recalls 2 driver "presets" for 6-way power seat, outside mirrors and telescoping steering column
- Mirror, inside rearview auto-dimming with compass, includes dual reading lights
- Oil life monitoring system- Seat adjuster, driver 6-way power
- Seat adjuster, front passenger 6-way power
- Seat adjusters, power bolster and power lumbar
- Seats, heated driver and front passenger - Steering wheel, 3-spoke leather-wrapped
- Storage, with lockable glovebox and center console (Also includes 1 rear storage compartment with cover)
- Trunk release, push button open
- Universal Home Remote includes garage door opener, 3-channel programmable, located on driver visor
- Visors, driver and front passenger illuminated vanity mirrors
- Windows, power with driver and passenger Express-Down

Mechanical

- Magnetic Selective Ride Control for ultimate driver control and comfort through the use of driver-selected Tour or Sport modes.
- Rear axle, 3.42 ratio, limited slip
- Transmission, 6-speed manual, short-throw includes launch control
- Brakes, 4-wheel antilock, 4-wheel disc- Calipers, Dark Gray Metallic
- Engine access, rear-opening hood
- Engine, 7.0L (427 ci) LS7 V8 SFI with dry sump oil system (505 hp [376.6 kW] @ 6300 rpm, 470 lb-ft of torque [634.5 N-m] @ 4800 rpm)
- Exhaust, dual-mode aluminized stainless-steel with 4" polished stainless- steel tips
- Rear wheel drive- Steering, power, speed-sensitive rack-and-pinion, variable ratio

Option Packages Total

\$11,690



Auto Park Dallas

View this car on our website at autoparkdallas.com/7183648

Website: autoparkdallas.com

Phone: (214) 945-2601

Map: [2061 S Stemmons Fwy, Lewisville, TX 75067](#)

