

2012 Chevrolet Corvette Z16 Grand Sport w/3LT Centennial Edition

Website Price \$44,995

View this vehicle on our website at autoparkdallas.com



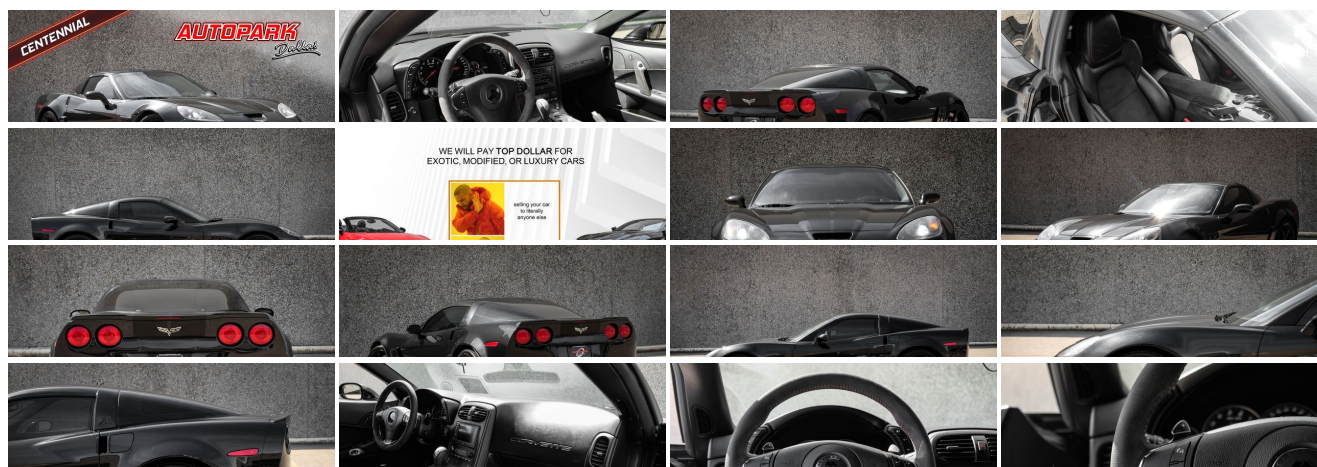
(214) 945-2601

2061 S Stemmons Fwy , Lewisville, TX 75067

Photos

Details

Contact





Specifications:

Year:	2012
VIN:	1G1YW2DW2C5103237
Make:	Chevrolet
Stock:	1246
Model/Trim:	Corvette Z16 Grand Sport w/3LT Centennial Edition
Condition:	Pre-Owned
Body:	Coupe
Exterior:	Carbon Flash Metallic
Engine:	6.2L (376 CI) V8 SFI
Interior:	Ebony Suede/Leather
Transmission:	6-SPEED PADDLE SHIFT WITH AUTOMATIC MODES
Mileage:	44,180
Drivetrain:	Rear Wheel Drive
Economy:	City 15 / Highway 25

Vehicle Description

AutoPark Dallas is thrilled to offer you this 2012 Chevrolet Z16 Grand Sport 3LT Centennial Edition for sale! The C6 generation of the Corvette had rather few special edition models that were produced out of the factory, and one of the most desirable of those special edition models has to be the Centennial Edition, offered in rather limited examples and rarely seen on the market these days! This Grand Sport of course delivers nearly all of the benefits of the Z06 model, of course without the upgraded LS7, but still retains the styling and numerous suspension upgrades to make it a superb upgrade over the standard 'Vette. As a **Centennial Special Edition**, this Grand Sport comes finished in an exclusive **Carbon Flash Metallic exterior** over an **Ebony Leather interior**, as well as **Centennial Wheels in Black**. The **Dual Mode Performance Exhaust** has been optioned as well, and the desirable **Magnetic Selective Ride Control** comes standard equipped to really provide all of the driving dynamics and adjustments desired. Prior ownership of this beautiful and rare example took the utmost care and pride in ownership, having a **Full Front Clear Bra** installed to protect the front end from road use and rock chipping - and with **only 44k miles**, has been pampered with zero modifications or abuse. Come check out why the C6 generation Corvette has become a fan favorite, especially in such a limited special edition trim! **DO! NOT! HESITATE!!!** To swing by and check out this Corvette Grand Sport Centennial Edition that we have parked here in our indoor 16,000 Sq Ft Showroom located in Dallas, Texas amongst our inventory of 100+ other Unique / Modified and Luxury Vehicles!

2012 Chevrolet Corvette Z16 Grand Sport 3LT Centennial Edition

****CLEAN CARFAX****

****FULL FRONT CLEAR BRA****

6.2L V8 ENGINE

6-SPEED AUTOMATIC TRANSMISSION W/ PADDLE SHIFTERS

CHEVROLET CENTENNIAL SPECIAL EDITION

DUAL-MODE PERFORMANCE EXHAUST

MAGNETIC SELECTIVE RIDE CONTROL

BLACK GRAND SPORT FENDER BADGES

RED BRAKE CALIPERS
BLACK HEADLAMP COLOR
3LT PREFERRED EQUIPMENT GROUP
HEADS UP DISPLAY
6-WAY POWER SEATS
AUDIO SYSTEM WITH NAVIGATION
GRAND SPORT CHEVROLET CENTENNIAL WHEELS IN BLACK
CARBON FLASH METALLIC EXTERIOR
EBONY LEATHER INTERIOR

Financing is available!

Check out our Payment Calculator to get an estimate on your monthly payments!

OR

Get pre-approved in no time by filling out a credit application on the 'Finance' section of our website!

We also offer MANY different Extended Warranty options!

Check out our Google Reviews by *Clicking* this LINK!

Referrals and Testimonials is what our business is built on!

The team here at AutoPark Dallas, is dedicated to offering a level of customer service not usually found in the automobile industry. Thanks to years of extensive car buying / selling experience, we pursue quality used and new vehicles that are hand-picked from factory sources. Our love for automobiles and dislike of traditional dealership tactics is what motivates us to provide the service we do! The pride we take in continuing this service long after the vehicle has been delivered is what we strive for! Looking forward to making every effort to see that our customer is completely satisfied and a friend for life!

Pre-purchase inspections are always welcomed!

We also offer airport pick-up, competitive financing options, free CARFAX Reports, Car Shipping nationwide, Extended Warranty plans, and so much more!

Trade-In(s) are always accepted or sell us your used car (MODIFIED OR NOT)! Please call or text for more information about Trade-Ins or selling your car to us @ (214) 945-2601!

#(214) 945-2601
Call or Text *Anytime!*
Se habla Español

WE BUY CARS!

WWW.AUTOPARKDALLAS.COM

Installed Options

Interior

- Door locks, power programmable with lockout protection
- Keyless Access with push button start and 2 remote transmitters that enable automatic door unlock and open by touching door switch
- OnStar Turn-by-Turn Navigation- Seat adjusters, power bolster and power lumbar
- Seats, Sport front bucket with perforated leather seating surfaces includes back angle adjustment, adjustable lumbar and side bolsters
- Stolen Vehicle Assistance
- Air conditioning, dual-zone automatic climate control with individual climate settings for driver and right-front passenger and outside temperature display
- Air filtration system with pollen filter- Cargo net and luggage shade
- Console, floor 2 covered cup holders, ashtray with cigar lighter, auxiliary power outlet and CD storage
- Cruise control, electronic with set and resume speed - Defogger, rear-window, electric
- Floor mats, carpeted- Hatch release, push button open with power hatch pulldown
- Head-Up Display with dot-matrix readouts for street mode, track mode with g-meter, vehicle speed, engine rpm and readings from key gauges including water temperature and oil pressure
- Instrumentation, electronic analog with Driver Information Center and 2-line display
- Lighting, interior with courtesy, cargo and glovebox
- Memory Package, recalls 2 driver "presets" for 6-way power seat, outside mirrors and telescoping steering column
- Mirror, inside rearview auto-dimming with compass, includes dual reading lights
- Oil life monitoring system- Seat adjuster, driver 6-way power
- Seats, heated driver and front passenger
- Steering column, power telescopic with manual tilt
- Steering wheel controls, mounted audio controls
- Steering wheel, 3-spoke leather-wrapped
- Storage, with lockable glovebox, center console and 2 rear compartments with covers (Only includes 1 rear storage compartment with manual transmission.)
- Universal Home Remote includes garage door opener, 3-channel programmable, located on driver visor
- Visors, driver and front passenger illuminated vanity mirrors
- Windows, power with driver and passenger Express-Down

Exterior

- Roof panel, 1-piece body-color, removable
- Tires, front P275/35ZR18 Eagle F1 Supercar and rear P325/30ZR19 Eagle F1 Supercar run flat
- Wheels, Grand Sport Silver painted aluminum 18" x 9.5" (45.7 cm x 24.1 cm) front and 19" x 12" (48.3 cm x 30.48 cm) rear
- Fog lamps, front, integral in front fascia- Glass, Solar-Ray light-tinted
- Headlamps, dual projector lamps, Xenon, High-Intensity Discharge (HID) low-beam tungsten-halogen high-beam with automatic exterior lamp control
- Mirrors, outside heated power-adjustable and driver-side auto-dimming, body- color
- Wipers, front intermittent

Safety

- Door locks, power programmable with lockout protection
- Keyless Access with push button start and 2 remote transmitters that enable automatic door unlock and open by touching door switch
- OnStar Turn-by-Turn Navigation- Seat adjusters, power bolster and power lumbar
- Seats, Sport front bucket with perforated leather seating surfaces includes back angle adjustment, adjustable lumbar and side bolsters
- Stolen Vehicle Assistance
- Air conditioning, dual-zone automatic climate control with individual climate settings for driver and right-front passenger and outside temperature display
- Air filtration system with pollen filter- Cargo net and luggage shade
- Console, floor 2 covered cup holders, ashtray with cigar lighter, auxiliary power outlet and CD storage
- Cruise control, electronic with set and resume speed - Defogger, rear-window, electric
- Floor mats, carpeted- Hatch release, push button open with power hatch pulldown

Option Packages

Factory Installed Packages

ENGINE, 6.2L (376 CI) V8 SFI

(430 hp [320.6 kW] @ 5900 rpm, 424 lb-ft of torque [572.4 N-m] @ 4600 rpm)

TRANSMISSION, 6-SPEED PADDLE SHIFT WITH AUTOMATIC MODES

\$1,250

BLACK GRAND SPORT FENDER BADGES

\$100

BLACK HEADLAMP COLOR OVERRIDE

substitute body-color headlamps for contrasting color

\$590

CALIPERS, RED

\$595

CHEVROLET CENTENNIAL SPECIAL EDITION

includes exterior color (58U) Carbon Flash Metallic, Chevrolet Centennial Black wheels and (F55) Magnetic Selective Ride Control.

\$4,950

EXHAUST, DUAL-MODE, PERFORMANCE

increases horsepower, adds 6 hp, aggressive exhaust sound

\$1,195

MAGNETIC SELECTIVE RIDE CONTROL

for ultimate driver control and comfort through the use of driver-selected Tour or Sport modes.

\$1,695

SEAT ADJUSTER, FRONT PASSENGER 6-WAY POWER

CARBON FLASH METALLIC

3LT PREFERRED EQUIPMENT GROUP

includes Standard Equipment

\$5,995

AUDIO SYSTEM WITH NAVIGATION, AM/FM STEREO WITH CD PLAYER, MP3 PLAYBACK AND DVD-BASED TOUCH-SCREEN NAVIGATION

USB port, auxiliary input jack, seek-and-scan, digital clock, auto-tone control, Radio Data System (RDS), automatic volume, TheftLock, 6.5" LCD color display and voice recognition.

EBONY, LEATHER SEATING SURFACES

WHEELS, GRAND SPORT CHEVROLET CENTENNIAL BLACK ALUMINUM

18" x 9.5" (45.7 cm x 24.1 cm) front and 19" x 12" (48.3 cm x 30.48 cm) rear

Option Packages Total

\$16,370

- Head-Up Display with dot-matrix readouts for street mode, track mode with g-meter, vehicle speed, engine rpm and readings from key gauges including water temperature and oil pressure
- Instrumentation, electronic analog with Driver Information Center and 2-line display
- Lighting, interior with courtesy, cargo and glovebox
- Memory Package, recalls 2 driver "presets" for 6-way power seat, outside mirrors and telescoping steering column
- Mirror, inside rearview auto-dimming with compass, includes dual reading lights
- Oil life monitoring system- Seat adjuster, driver 6-way power
- Seats, heated driver and front passenger
- Steering column, power telescopic with manual tilt
- Steering wheel controls, mounted audio controls
- Steering wheel, 3-spoke leather-wrapped
- Storage, with lockable glovebox, center console and 2 rear compartments with covers (Only includes 1 rear storage compartment with manual transmission.)
- Universal Home Remote includes garage door opener, 3-channel programmable, located on driver visor
- Visors, driver and front passenger illuminated vanity mirrors
- Windows, power with driver and passenger Express-Down

Mechanical

- Rear axle, 3.42 ratio, limited slip (Included and only available with (MZ6) 6-speed manual transmission.)
- Transmission, 6-speed manual, short-throw includes launch control, specific gearing and quicker ratios
- Brakes, 4-wheel antilock, 4-wheel disc- Calipers, Silver
- Engine access, rear-opening hood
- Engine, 6.2L (376 ci) V8 SFI (430 hp [320.6 kW] @ 5900 rpm, 424 lb-ft of torque [572.4 N-m] @ 4600 rpm)
- Exhaust, aluminized stainless-steel with 3" polished stainless-steel tips
- Performance Package includes dry sump oil system, rear-mounted battery and differential cooler (Deleted when (MYC) 6-speed paddle shift, automatic transmission is ordered.)
- Rear wheel drive- Steering, power, speed-sensitive rack-and-pinion, variable ratio



Auto Park Dallas

View this car on our website at autoparkdallas.com/7183647

Website: autoparkdallas.com

Phone: (214) 945-2601

Map: [2061 S Stemmons Fwy, Lewisville, TX 75067](#)

