



2015 Chevrolet Camaro SS 1LE Cammed

Website Price \$34,995

View this vehicle on our website at autoparkdallas.com



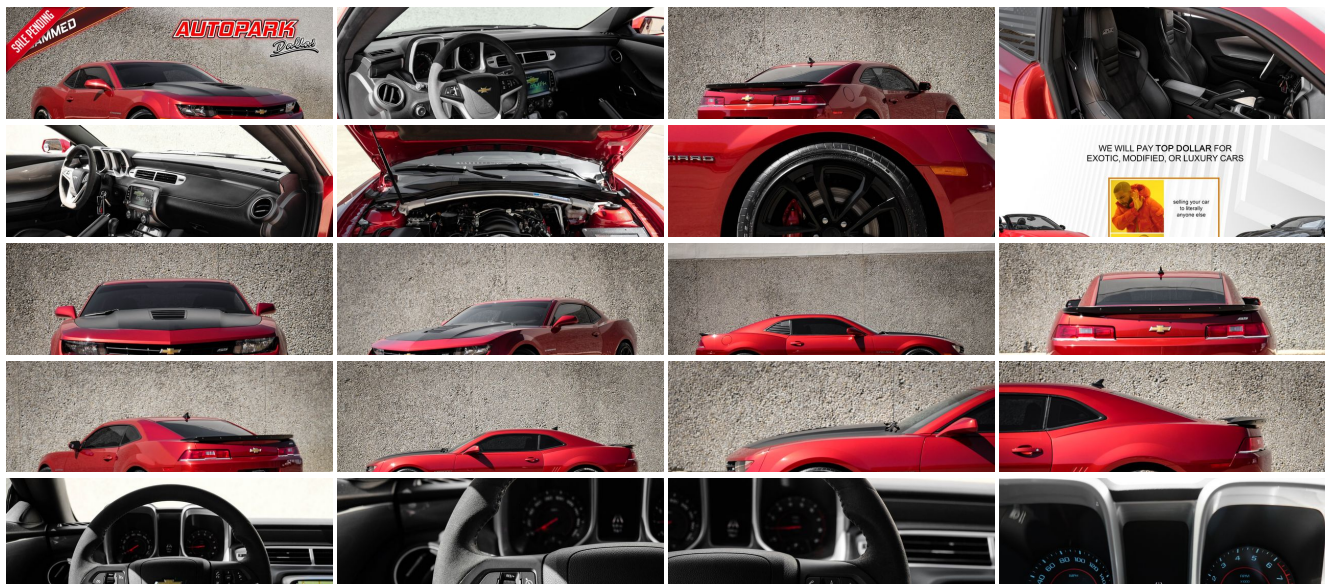
(214) 945-2601

2061 S Stemmons Fwy , Lewisville, TX 75067

Photos

Details

Contact



Specifications:

Year:	2015
VIN:	2G1FJ1EW3F9131456
Make:	Chevrolet
Stock:	1178
Model/Trim:	Camaro SS 1LE Cammed
Condition:	Pre-Owned
Body:	Coupe
Exterior:	Red Rock Metallic
Engine:	ENGINE, 6.2L V8 SFI
Interior:	Black Suede/Leather
Transmission:	TRANSMISSION, 6-SPEED MANUAL
Mileage:	20,298
Drivetrain:	Rear Wheel Drive
Economy:	City 15 / Highway 24

Vehicle Description

AutoPark Dallas is thrilled to offer you this 2015 Chevrolet Camaro SS 1LE for sale! From the moment this Camaro fires over on engine start, any automotive enthusiast immediately recognizes the distinct sound of the **Cammed Engine** - a great performance upgrade that not only performs but sounds great as well. Couple that upgrade with a **Cold Air Inductions Intake** and a **Modified Exhaust**, and you've got some great upgrades to an already fantastic platform! From the factory, this Camaro came fully optioned with everything from the **SS Performance Package** including the **1LE Performance Suspension**, a superb interior with the **Recaro Performance Seats**, and a great sound straight from the factory with the **Dual Mode Performance Exhaust**, plus more! The **Red Rock Metallic exterior** over the **Black Leather interior** provides a fantastic color combination not often seen, and provides the perfect contrast to the **Factory Wrapped Matte Black Hood** and **20" Wheels finished in Black**. With only 20k miles, this is one Camaro you need to check out as it won't last long! DO! NOT! HESISTATE!!! To swing by and check out this Cammed Camaro SS 1LE that we have parked here in our indoor 16,000 Sq Ft Showroom located in Dallas, Texas amongst our inventory of 100+ other Unique / Modified and Luxury Vehicles!

2015 Chevrolet Camaro SS 1LE Cammed

****CLEAN CARFAX****

****ONLY 20K MILES****

MODIFICATIONS

CAMMED

COLD AIR INDUCTIONS INTAKE

MODIFIED EXHAUST

STOCK

6.2L V8 ENGINE

6-SPEED MANUAL TRANSMISSION

RECARO PERFORMANCE SEATS

SS PERFORMANCE PACKAGE

1LE PERFORMANCE SUSPENSION
DUAL-MODE PERFORMANCE EXHAUST

3-SPOKE SUEDE STEERING WHEEL

SUEDE SHIFT KNOB

2SS PREFERRED EQUIPMENT GROUP

TOUCH SCREEN DISPLAY WITH NAVIGATION

20" 10-SPOKE FORGED ALUMINUM WHEELS IN BLACK

REAR SPOILER

3.91 RATIO AXLE

FRONT LICENSE PLATE BRACKET

RED ROCK METALLIC

BLACK LEATHER INTERIOR

Financing is available!

Check out our Payment Calculator to get an estimate on your monthly payments!

OR

Get pre-approved in no time by filling out a credit application on the 'Finance' section of our website!

We also offer MANY different Extended Warranty options!

Check out our Google Reviews by *Clicking* this LINK!

Referrals and Testimonials is what our business is built on!

The team here at AutoPark Dallas, is dedicated to offering a level of customer service not usually found in the automobile industry. Thanks to years of extensive car buying / selling experience, we pursue quality used and new vehicles that are hand-picked from factory sources. Our love for automobiles and dislike of traditional dealership tactics is what motivates us to provide the service we do! The pride we take in continuing this service long after the vehicle has been delivered is what we strive for! Looking forward to making every effort to see that our customer is completely satisfied and a friend for life!

Pre-purchase inspections are always welcomed!

We also offer airport pick-up, competitive financing options, free CARFAX Reports, Car Shipping nationwide, Extended Warranty plans, and so much more!

Trade-In(s) are always accepted or sell us your used car (MODIFIED OR NOT)! Please call or text for more information about Trade-Ins or selling your car to us @ (214) 945-2601!

#(214) 945-2601

Call or Text **Anytime!**

Se habla Español

WE BUY CARS!

WWW.AUTOPARKDALLAS.COM

Installed Options

Interior

- Door locks, power programmable with lockout protection- Floor mats, carpeted front
- Remote Keyless Entry- Seat trim, front leather seating surfaces
- Seats, front Sport bucket includes adjustable head restraints and folding rear seat with trunk pass-through (Upgradeable to (AYZ) Recaro performance front seats. Includes passenger-side seatback map pocket.)
- Air conditioning, single-zone manual- Air filtration system with pollen filter
- Coat hooks, driver- and passenger-side rear
- Compass, located in Driver Information Center - Console, floor, with armrest
- Cruise control, electronic with set and resume speed, steering wheel mounted
- Cup holders, 2 front- Dead pedal, driver- Defogger, rear-window, electric
- Driver Information Center, color display
- Gauges, auxiliary, multi-function includes 4 gauges: oil pressure, battery voltage, oil temperature and transmission fluid temperature, mounted on center console forward of shifter
- Glovebox, lockable
- Head-Up Display with color digital readouts for vehicle speed, selected gear, G-Force, audio system information, high-beam indicator, compass, outside air temperature, turn signals, tachometer, vehicle messages, Turn-by-Turn information and phone information
- Instrumentation, analog includes speedometer, tachometer, fuel gauge and engine temperature gauge
- Lighting, front reading lamps
- Lighting, interior with illuminated entry and theater dimming - Map pockets, front doors
- Mirror, inside rearview auto-dimming, frameless
- Power outlets, 2 auxiliary 1 located in center console storage area and 1 located at front of center console
- Seat adjuster, driver, 6-way power (fore/aft, up/down, tilt) with power recliner
- Seat adjuster, front passenger, 6-way power (fore/aft, up/down, tilt) with power recliner
- Seats, heated driver and front passenger - Shift knob, leather-wrapped
- Sill plate, Chevrolet- Steering column, manual rake and telescopic
- Steering wheel, 3-spoke leather-wrapped- Theft-deterrent system, PASS-Key III
- Trunk release, remote, located on driver-side
- Universal Home Remote includes garage door opener, 3-channel programmable
- Visors, driver and front passenger vanity mirrors, covered
- Windows, power with driver and passenger Express-Down/Up

Exterior

- Headlamps, halogen composite with automatic exterior lamp control - Spoiler, rear
- Tires, P245/45R20 front and P275/40R20 rear, blackwall, summer (Do not use summer-only tires in winter conditions, as it would adversely affect vehicle safety, performance and durability.)
- Wheels, 20" x 8" (50.8 cm x 20.3 cm) front and 20" x 9" (50.8 cm x 22.9 cm) rear flangeless, painted aluminum with Bright Silver finish
- Door handles, body-color- Fascias, front and rear body-color, SS-specific
- Fog lamps, front projector type- Hood blanket
- Mirrors, outside heated power-adjustable and driver-side auto-dimming, body-color
- Molding, Black roof ditch- Moldings, body-color lower rocker
- Spare tire and wheel, not desired tire sealant and inflator kit in place of spare tire
- Tire sealant and inflator kit in place of spare tire - Wipers, front intermittent

Safety

Option Packages

Factory Installed Packages

ENGINE, 6.2L V8 SFI

(426 hp [317.6 kW] @ 5900 rpm, 420 lb-ft of torque [567.0 N-m] @ 4600 rpm)

TRANSMISSION, 6-SPEED MANUAL

EXHAUST, DUAL-MODE, PERFORMANCE

\$895

LICENSE PLATE BRACKET, FRONT

\$15

SHIFT KNOB, SUEDED MICROFIBER-WRAPPED

SPOILER, REAR, UNIQUE

SS PERFORMANCE PACKAGE

includes (RSK) 20" x 10" front and 20" x 11" rear aluminum wheels, (RKC) 285/35ZR20 performance summer-only blackwall tires, (D52) unique rear spoiler, (GW1) 3.91 axle, (FE6) 1LE Performance suspension, 6-speed manual transmission (MN6 ordered, but unique MM6 is actual transmission included), (KS9) sueded microfiber-wrapped shift knob and (N26) sueded microfiber-wrapped, flat bottom steering wheel

\$3,500

STEERING WHEEL, 3-SPOKE, SUEDED MICROFIBER-WRAPPED

flat-bottom

SUSPENSION, 1LE PERFORMANCE

AXLE, 3.91 RATIO

EMISSIONS, FEDERAL REQUIREMENTS, 50-STATE CERTIFIED

RED ROCK METALLIC

2SS PREFERRED EQUIPMENT GROUP

includes Standard Equipment

AUDIO SYSTEM WITH NAVIGATION, 7" DIAGONAL COLOR TOUCH SCREEN DISPLAY AM/FM STEREO WITH NAVIGATION DISPLAY

Safety

- Door locks, power programmable with lockout protection- Floor mats, carpeted front
- Remote Keyless Entry- Seat trim, front leather seating surfaces
- Seats, front Sport bucket includes adjustable head restraints and folding rear seat with trunk pass-through (Upgradeable to (AYZ) Recaro performance front seats. Includes passenger-side seatback map pocket.)
- Air conditioning, single-zone manual- Air filtration system with pollen filter
- Coat hooks, driver- and passenger-side rear
- Compass, located in Driver Information Center - Console, floor, with armrest
- Cruise control, electronic with set and resume speed, steering wheel mounted
- Cup holders, 2 front- Dead pedal, driver- Defogger, rear-window, electric
- Driver Information Center, color display
- Gauges, auxiliary, multi-function includes 4 gauges: oil pressure, battery voltage, oil temperature and transmission fluid temperature, mounted on center console forward of shifter
- Glovebox, lockable
- Head-Up Display with color digital readouts for vehicle speed, selected gear, G-Force, audio system information, high-beam indicator, compass, outside air temperature, turn signals, tachometer, vehicle messages, Turn-by-Turn information and phone information
- Instrumentation, analog includes speedometer, tachometer, fuel gauge and engine temperature gauge
- Lighting, front reading lamps
- Lighting, interior with illuminated entry and theater dimming - Map pockets, front doors
- Mirror, inside rearview auto-dimming, frameless
- Power outlets, 2 auxiliary 1 located in center console storage area and 1 located at front of center console
- Seat adjuster, driver, 6-way power (fore/aft, up/down, tilt) with power recliner
- Seat adjuster, front passenger, 6-way power (fore/aft, up/down, tilt) with power recliner
- Seats, heated driver and front passenger - Shift knob, leather-wrapped
- Sill plate, Chevrolet- Steering column, manual rake and telescopic
- Steering wheel, 3-spoke leather-wrapped- Theft-deterrent system, PASS-Key III
- Trunk release, remote, located on driver-side
- Universal Home Remote includes garage door opener, 3-channel programmable
- Visors, driver and front passenger vanity mirrors, covered
- Windows, power with driver and passenger Express-Down/Up

Mechanical

- Brakes, 4-wheel antilock, 4-wheel disc (Brembo performance 4 piston front and 4 piston rear brakes.)
- Brakes, Brembo- Transmission, 6-speed manual- Alternator, 150 amps
- Axle, 3.45 ratio
- Battery, maintenance-free with rundown protection and retained accessory power
- Differential, limited slip
- Engine, 6.2L V8 SFI (426 hp [317.6 kW] @ 5900 rpm, 420 lb-ft of torque [567.0 N-m] @ 4600 rpm) (Requires (MN6) 6-speed manual transmission.)
- Exhaust, dual-outlet stainless-steel with bright tips - Rear wheel drive
- Steering, power, variable ratio, electric- Suspension, Performance

\$495

BLACK, FRONT LEATHER SEATING SURFACES

SEATS, FRONT RECARO PERFORMANCE

with front leather seating surfaces and sueded
microfiber inserts bucket, includes folding rear
seat with trunk pass-through

\$1,995

WHEELS, 20" X 10" (50.8 CM X 25.4 CM) FRONT AND 20" X 11"
(50.8 CM X 27.9 CM) REAR BLACK 10-SPOKE FORGED
ALUMINUM

Option Packages Total

\$6,900



Auto Park Dallas

View this car on our website at autoparkdallas.com/7183643

Website: autoparkdallas.com

Phone: (214) 945-2601

Map: 2061 S Stemmons Fwy, Lewisville, TX 75067

