



2015 BMW M3 Modified

Website Price \$37,995

View this vehicle on our website at autoparkdallas.com



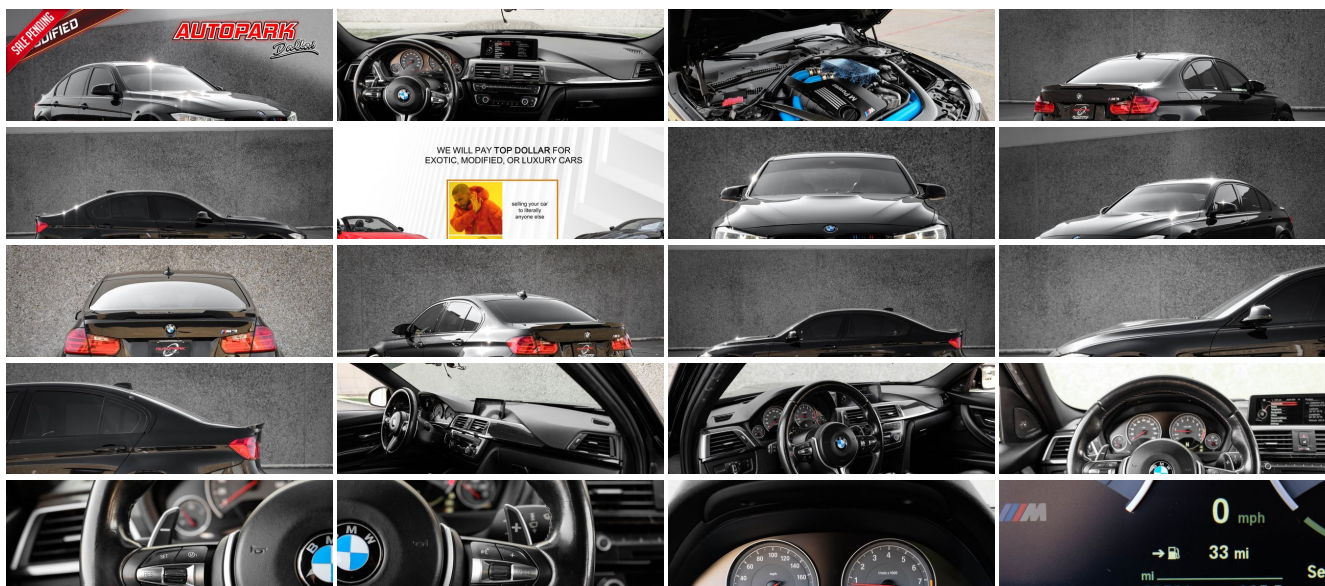
(214) 945-2601

2061 S Stemmons Fwy , Lewisville, TX 75067

Photos

Details

Contact



Specifications:

Year:	2015
VIN:	WBS3C9C57FP803736
Make:	BMW
Stock:	1225
Model/Trim:	M3 Modified
Condition:	Pre-Owned
Body:	Sedan
Exterior:	Black Sapphire Metallic
Engine:	Engine: 3.0L Inline 6-Cylinder M TwinPower Turbo
Interior:	Black Leather
Transmission:	TRANSMISSION: 7-SPEED M-DOUBLE CLUTCH
Mileage:	83,514
Drivetrain:	Rear Wheel Drive
Economy:	City 17 / Highway 24

Vehicle Description

AutoPark Dallas is thrilled to offer you this 2015 BMW M3 for sale! While it's always been known how great of a platform the BMW M3 has always been since inception, the F80 generation M3 really took things to a whole new level! Moving away from the naturally aspirated V8 of the prior generation, the F80 is the first generation to introduce turbocharging to the lineup, boosting power to new levels and subsequently leaving plenty to be desired in the way of aftermarket power gains. No wonder it became an instant classic amongst the tuner community, as the ease to modify and make great power gains had never been easier. This Modified F80 M3 comes with a host of upgrades in the form of a **VRSF High Flow Air Intake**, **VRSF Charge Pipes**, and **VRSF Top Mount Intercooler** - each of which have been professionally hydro dipped to create a unique and beautiful engine bay accent. VRSF (VR Speed Factory) is based out of FL and specializes in BMW performance products, so are no stranger to the tuning scene and product. Additional upgrades also encompass **Downpipes**, a **Modified Exhaust**, and of course **Custom Tune** to properly bring it all together and produce quite a bit of improved power. From the factory, this M3 comes well optioned with the **Executive Package**, **Harman/Kardon Sound**, and the unbelievably quick-shifting **M Double Clutch Transmission**. All in all, this is one BMW that is sure to please any enthusiast looking for that next German sports car to enjoy. DO! NOT! HESITATE!!! To swing by and check out this Modified M3 that we have parked here in our indoor 16,000 Sq Ft Showroom located in Dallas, Texas amongst our inventory of 100+ other Unique / Modified and Luxury Vehicles!

2015 BMW M3

MODIFICATIONS

VRSF HIGH FLOW AIR INTAKE

VRSF CHARGE PIPES

VRSF TOP MOUNT INTERCOOLER

HYDRO-DIPPED INTAKE PIPING / CHARGE PIPES / INTERCOOLER

DOWNPIPES

MODIFIED EXHAUST

CUSTOM TUNE

CARBON FIBER TRUNK SPOILER

CARBON FIBER FRONT SPLITTERS

M STYLE WHEELS FINISHED IN BLACK

STOCK

7-SPEED M-DOUBLE CLUTCH TRANSMISSION

EXECUTIVE PACKAGE

HARMAN/KARDON SURROUND SOUND SYSTEM

CARBON FIBER ROOF

LANE ASSIST

HEATED FRONT/REAR SEATS

HEATED STEERING WHEEL

COMFORT ACCESS

HEADS UP DISPLAY

CARBON FIBER INTERIOR TRIM

BLACK SAPPHIRE METALLIC EXTERIOR

BLACK MERINO LEATHER INTERIOR

Financing is available!

Check out our Payment Calculator to get an estimate on your monthly payments!

OR

Get pre-approved in no time by filling out a credit application on the 'Finance' section of our website!

We also offer MANY different Extended Warranty options!

Check out our Google Reviews by *Clicking* this LINK!

Referrals and Testimonials is what our business is built on!

The team here at AutoPark Dallas, is dedicated to offering a level of customer service not usually found in the automobile industry. Thanks to years of extensive car buying / selling experience, we pursue quality used and new vehicles that are hand-picked from factory sources. Our love for automobiles and dislike of traditional dealership tactics is what motivates us to provide the service we do! The pride we take in continuing this service long after the vehicle has been delivered is what we strive for! Looking forward to making every effort to see that our customer is completely satisfied and a friend for life!

Pre-purchase inspections are always welcomed!

We also offer airport pick-up, competitive financing options, free CARFAX Reports, Car Shipping nationwide, Extended Warranty plans, and so much more!

Trade-In(s) are always accepted or sell us your used car (MODIFIED OR NOT)! Please call or text for more information about Trade-Ins or selling your

#(214) 945-2601

Call or Text **Anytime!**

Se habla Español

WE BUY CARS!

WWW.AUTOPARKDALLAS.COM

Installed Options

Interior

- 2-Way Power Driver Seat -inc: Power Seatback Side Bolster Support and Manual Cushion Extension
- 2-Way Power Passenger Seat -inc: Power Seatback Side Bolster Support and Manual Cushion Extension
- 40-20-40 Folding Bench Front Facing Fold Forward Seatback Rear Seat
- BMW Online Full Service Internet Access- Cloth/Leather Upholstery
- Dual Zone Front Automatic Air Conditioning
- FOB Controls -inc: Cargo Access, Windows and Sunroof/Convertible Roof
- Gauges -inc: Speedometer, Odometer, Tachometer, Oil Temperature, Trip Odometer and Trip Computer
- Heated Front Sport Seats -inc: lumbar support
- Power 1st Row Windows w/Front And Rear 1-Touch Up/Down
- Power Door Locks w/Autolock Feature- Power Rear Windows
- Proximity Key For Push Button Start Only - Rear HVAC w/Separate Controls
- Remote Keyless Entry w/Integrated Key Transmitter, 4 Door Curb/Courtesy, Illuminated Entry and Panic Button
- Sliding Front Center Armrest and Rear Center Armrest w/Pass-Thru - Trip Computer
- 2 Seatback Storage Pockets- 4 12V DC Power Outlets- Air Filtration
- Analog Appearance- Cargo Area Concealed Storage
- Cargo Features -inc: Tire Mobility Kit- Cargo Net- Cargo Space Lights
- Carpet Floor Trim and Carpet Trunk Lid/Rear Cargo Door Trim
- Cruise Control w/Steering Wheel Controls- Day-Night Auto-Dimming Rearview Mirror
- Delayed Accessory Power- Driver / Passenger And Rear Door Bins
- Driver And Passenger Visor Vanity Mirrors w/Driver And Passenger Illumination
- Driver Foot Rest- Fade-To-Off Interior Lighting
- Fixed Front Head Restraints and Manual Adjustable Rear Head Restraints
- Front And Rear Map Lights- Front Cupholder
- Full Carpet Floor Covering -inc: Carpet Front And Rear Floor Mats - Full Cloth Headliner
- Full Floor Console w/Covered Storage and 4 12V DC Power Outlets
- Garage Door Transmitter
- HVAC -inc: Underseat Ducts, Residual Heat Recirculation and Console Ducts
- Illuminated Locking Glove Box- Immobilizer
- Integrated Navigation System w/Voice Activation- Interior Lock Disable
- Interior Trim -inc: Carbon Fiber Instrument Panel Insert, Carbon Fiber Console Insert and Metal-Look Interior Accents
- Leather/Metal-Look Gear Shifter Material- Leatherette Door Trim Insert
- Manual Tilt/Telescoping Steering Column
- Memory Settings -inc: Driver Seat and Door Mirrors - Outside Temp Gauge
- Perimeter Alarm- Power Fuel Flap Locking Type- Rear Cupholder
- Remote Releases -Inc: Power Cargo Access- Sport Leather Steering Wheel
- Systems Monitor- Tracker System- Valet Function

Exterior

- Tailgate/Rear Door Lock Included w/Power Door Locks
- Tires: 255/40R18 Front & 275/40R18 Rear -inc: Mixed performance

Option Packages

Factory Installed Packages

TRANSMISSION: 7-SPEED M-DOUBLE CLUTCH	
-inc: Drivelogic	\$2,900

EXECUTIVE PACKAGE	
-inc: Heated Rear Seats, Comfort Access Keyless Entry, Head-Up Display, Heated Steering Wheel, Satellite Radio w/1 Year Subscription, Retractable Headlight Washers, Rear View Camera, Park Distance Control	\$4,300

HARMAN/KARDON SURROUND SOUND SYSTEM	
	\$875

BLACK SAPPHIRE METALLIC	
	\$550

BLACK, EXTENDED MERINO LEATHER SEAT UPHOLSTERY	
	\$950

Option Packages Total	
	\$9,575

- Wheels: 18" x 9" Front & 18" x 10" Rear -inc: Light alloy V-spoke, style 513M
- Auto On/Off Projector Beam High Intensity Low/High Beam Daytime Running Auto-Leveling Directionally Adaptive Headlamps w/Delay-Off
- Black Grille w/Chrome Surround
- Black Side Windows Trim and Black Front Windshield Trim
- Body-Colored Door Handles- Body-Colored Front Bumper
- Body-Colored Power Heated Auto Dimming Side Mirrors w/Power Folding and Turn Signal Indicator
- Body-Colored Rear Bumper- Clearcoat Paint- Fixed Rear Window w/Defroster
- Front Windshield -inc: Sun Visor Strip- Galvanized Steel/Aluminum/Composite Panels
- Light Tinted Glass- Lip Spoiler- Perimeter/Approach Lights
- Speed Sensitive Rain Detecting Variable Intermittent Wipers w/Heated Jets
- Tire Mobility Kit- Trunk Rear Cargo Access- Wheels w/Silver Accents

Safety

- 2-Way Power Driver Seat -inc: Power Seatback Side Bolster Support and Manual Cushion Extension
- 2-Way Power Passenger Seat -inc: Power Seatback Side Bolster Support and Manual Cushion Extension
- 40-20-40 Folding Bench Front Facing Fold Forward Seatback Rear Seat
- BMW Online Full Service Internet Access- Cloth/Leather Upholstery
- Dual Zone Front Automatic Air Conditioning
- FOB Controls -inc: Cargo Access, Windows and Sunroof/Convertible Roof
- Gauges -inc: Speedometer, Odometer, Tachometer, Oil Temperature, Trip Odometer and Trip Computer
- Heated Front Sport Seats -inc: lumbar support
- Power 1st Row Windows w/Front And Rear 1-Touch Up/Down
- Power Door Locks w/Autolock Feature- Power Rear Windows
- Proximity Key For Push Button Start Only - Rear HVAC w/Separate Controls
- Remote Keyless Entry w/Integrated Key Transmitter, 4 Door Curb/Courtesy, Illuminated Entry and Panic Button
- Sliding Front Center Armrest and Rear Center Armrest w/Pass-Thru - Trip Computer
- 2 Seatback Storage Pockets- 4 12V DC Power Outlets- Air Filtration
- Analog Appearance- Cargo Area Concealed Storage
- Cargo Features -inc: Tire Mobility Kit- Cargo Net- Cargo Space Lights
- Carpet Floor Trim and Carpet Trunk Lid/Rear Cargo Door Trim
- Cruise Control w/Steering Wheel Controls- Day-Night Auto-Dimming Rearview Mirror
- Delayed Accessory Power- Driver / Passenger And Rear Door Bins
- Driver And Passenger Visor Vanity Mirrors w/Driver And Passenger Illumination
- Driver Foot Rest- Fade-To-Off Interior Lighting
- Fixed Front Head Restraints and Manual Adjustable Rear Head Restraints
- Front And Rear Map Lights- Front Cupholder
- Full Carpet Floor Covering -inc: Carpet Front And Rear Floor Mats - Full Cloth Headliner
- Full Floor Console w/Covered Storage and 4 12V DC Power Outlets
- Garage Door Transmitter
- HVAC -inc: Underseat Ducts, Residual Heat Recirculation and Console Ducts
- Illuminated Locking Glove Box- Immobilizer
- Integrated Navigation System w/Voice Activation- Interior Lock Disable
- Interior Trim -inc: Carbon Fiber Instrument Panel Insert, Carbon Fiber Console Insert and Metal-Look Interior Accents
- Leather/Metal-Look Gear Shifter Material- Leatherette Door Trim Insert
- Manual Tilt/Telescoping Steering Column
- Memory Settings -inc: Driver Seat and Door Mirrors - Outside Temp Gauge
- Perimeter Alarm- Power Fuel Flap Locking Type- Rear Cupholder
- Remote Releases -Inc: Power Cargo Access- Sport Leather Steering Wheel
- Systems Monitor- Tracker System- Valet Function

Mechanical

- Transmission: 6-Speed Manual- 15.9 Gal. Fuel Tank- 3.46 Axle Ratio
- 4-Wheel Disc Brakes w/4-Wheel ABS, Front And Rear Vented Discs, Brake Assist and Hill Hold Control
- 90-Amp/Hr 900CCA Maintenance-Free Battery
- Dual Stainless Steel Exhaust w/Chrome Tailpipe Finisher
- Electric Power-Assist Speed-Sensing Steering
- Electro-Mechanical Limited Slip Differential- Engine Auto Stop-Start Feature
- Engine Oil Cooler- Engine: 3.0L Inline 6-Cylinder M TwinPower Turbo
- Front And Rear Anti-Roll Bars- Gas-Pressurized Shock Absorbers
- Multi-Link Rear Suspension w/Coil Springs- Rear-Wheel Drive
- Regenerative 210 Amp Alternator- Sport Tuned Suspension
- Strut Front Suspension w/Coil Springs

AUTOPARK

Dallas

Auto Park Dallas

View this car on our website at autoparkdallas.com/7183631

Website: autoparkdallas.com

Phone: (214) 945-2601

Map: 2061 S Stemmons Fwy, Lewisville, TX 75067

