

iconicpreferred.com
4808435171
2175 E 5th ST
Tempe, Arizona
85281

Iconic Preferred
Cars

2008 Mercedes-Benz E350 Sport

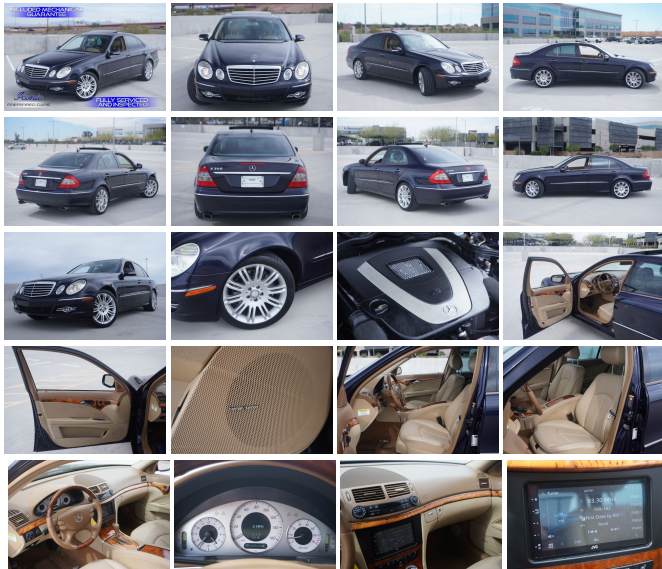
View this car on our website at iconicpreferred.com/7183527/ebrochure



Our Price **\$10,919**

Specifications:

Year: 2008
VIN: **WDBUF56X68B199927**
Make: Mercedes-Benz
Stock: 199927
Model/Trim: E350 Sport
Condition: Pre-Owned
Body: Sedan
Exterior: Capri Blue Metallic
Engine: 3.5L DOHC 24-valve V6 engine
Interior: Cashmere Leather
Mileage: 120,507
Drivetrain: Rear Wheel Drive
Economy: City 17 / Highway 24



PLEASE CALL OR TEXT 480-843-5171 FOR APPOINTMENT. INCLUDES AN ARMOR SHEILD 50/50 GUARANTEE. THIS 2008 MERCEDES BENZ E350 SPORT SEDAN HAS A CERTIFIED CLEAN VEHICLE HISTORY REPORT AND HAS BEEN FULLY INSPECTED & RECONDITIONED FOR YOUR CONVENIENCE. WE MAKE THE EFFORT TO INSURE ALL OUR INVENTORY LOOK FLAWLESS, SO WHEN YOU WALK IN TO OUR SHOWROOM YOU WILL BE LOOKING AT THE MOST BEAUTIFUL CAR IN THE MARKET. THIS CAR HAS HAD A CONCOURSE DETAIL, PAINT RESTORATION, DING / DENT REMOVAL AND LEATHER RECONDITIONING. WE SPEND THE TIME AND MONEY TO INCREASE AND HELP PRESERVE THE VALUE OF YOUR NEXT VEHICLE. THIS FLAWLESS MERCEDES E-CLASS SPORT SEDAN IS FINISHED IN CAPRI BLUE METALLIC ON CASHMERE LEATHER AND FEATURES LEATHER HEATED SEATS, CLIMATE CONTROL, POWER SLIDING GLASS MOON ROOF, BLUETOOTH CONECTIVITY AND A PREMIUM AUDIO SYSTEM THAT SOUNDS GREAT. COME DOWN TO OUR ALL INDOOR AND CLIMATE CONTROLLED SHOWROOM TODAY LOCATED IN SUNNY TEMPE, ARIZONA AND SEE FOR YOURSELF. PLEASE CALL OR TEXT (480)843-5171 FOR APPOINTMENT. THIS LOW ADVERTISED PRICE IS AN INTERNET CASH SPECIAL, CUSTOM TAILORED FINANCING IS AVAILABLE. WE OFFER KELLY BLUE BOOK FAIR TRADE-IN VALUE ON MOST TRADES, HONEST AND FRIENDLY STAFF, 3 MONTH 3,000 MILE GUARANTEE AND DISCOUNTED PARTS & SERVICE FOR ALL CUSTOMERS. ARE YOU TIRED OF LOOKING AT CARS OTHER DEALERS ADVERTISE AS PERFECT CONDITION AND COME TO FIND OUT THEY ARE NOT WHAT YOU EXPECTED? YOU NEED TO SEE THE INVENTORY AT ICONIC PREFERRED CARS. WE TAKE PRIDE IN STOCKING THE CLEANEST CARS AT COMPETITIVE PRICES. ICONIC PREFERRED CARS SERVING AZ FOR OVER 26 YEARS. "IF I WOULDN'T PARK IT IN MY OWN GARAGE, YOU BET YOU WON'T FIND IT AT MY DEALERSHIP". WWW.ICONICPREFERRED.COM, *WHITE GLOVE DELIVERY IS SUBJECT TO A \$199.00 OR MORE FEE DEPENDENT ON DELIVERY DISTANCE.

Vehicle History Report : as Of 03/24/2023

CARFAX

Snapshot

2008 MERCEDES-BENZ E-CLASS E 350



Damage reported: minor damage



26 Service history records



At least 1 open recall



2 Previous owners



120,507 Last reported odometer reading



FREE CARFAX Report

See the full CARFAX Report for additional information

*carfax Snapshot is a reflection of available information on the date the report was pulled. carfax is constantly being updated with new information and is subject to change at any time.

Our Location :



2008 Mercedes-Benz E350 Sport

Iconic Preferred Cars - 4808435171 - View this car on our website at iconicpreferred.com/7183527/ebrochure

Installed Options

Interior

- 10-way pwr front bucket seats-inc: 3-position memory, adjustable lumbar support, pwr active head restraints
- 4-way pwr tilt/telescopic steering column w/memory, programmable easy-exit feature
- Audio auxiliary input jack in glovebox- Auto-dimming rearview mirror
- Automatic dual-zone climate control-inc: electrostatic dust & pollen filters, humidity & dew point sensors, tunnel mode w/1-touch closing of all windows
- Black Birdseye Maple wood trim
- COMAND cockpit management & data system-inc: AM/FM/Weatherband radio, integrated MP3 compatible 6-disc CD changer, large color LCD screen, (10) soft keys, fiber-optic communication among components
- Cargo area & cabin 12V pwr outlets- Cruise control
- Driver/passenger illuminated visor mirrors
- Electrically heated rear window w/auto shut off based on time & driving speed & exterior temp
- Front reading lamps- Front/rear floor mats
- Harman/kardon LOGIC7 digital surround sound system
- Illuminated entry system w/locator lighting
- Instrumentation-inc: fuel & coolant temp electronic bar-graph, tachometer, quartz clock
- Integrated HomeLink compatible (3) button garage door opener
- Leather-trimmed shift knob
- Leather-trimmed steering wheel w/audio & multi-function display controls
- MB Tex upholstery- Mercedes-Benz Maintenance System Plus display

- MB-TEX upholstery- Mercedes-Benz Maintenance System Plus display
- Multi-function display in instrument cluster-inc: trip computer, exterior temp gauge, digital speedometer, audio status, reminder & malfunction indicator, driver-programmable settings, trip meter
- Night security illumination- Pwr door locks w/drive away locking
- Pwr windows w/1-touch express down & up
- SmartKey infrared remote-inc: trunk open, closing windows & sunroof open/close, panic alarm, fuel filler door, selective unlock
- Tele Aid global positioning system (GPS) satellite system-inc: stolen vehicle recovery, remote door unlock service, automatic alarm & collision notification
- Tire pressure monitor- White gauged instrument cluster

Exterior

- Blue tinted glass- Front halogen foglamps
- Programmable daytime running lamps w/auto override
- Pwr heated mirrors-inc: memory, auto-dimming driver mirror
- Pwr tilt/slide tinted glass sunroof w/1-touch express open/close, memory
- Rain-sensing windshield wipers w/heated windshield washer reservoir - Rear sport bumper
- Single red rear foglamp
- Variable-focus halogen headlamps-inc: projector low beams, selectable light- sensing headlamps

Safety

- 10-way pwr front bucket seats-inc: 3-position memory, adjustable lumbar support, pwr active head restraints
- 4-way pwr tilt/telescopic steering column w/memory, programmable easy-exit feature
- Audio auxiliary input jack in glovebox- Auto-dimming rearview mirror
- Automatic dual-zone climate control-inc: electrostatic dust & pollen filters, humidity & dew point sensors, tunnel mode w/1-touch closing of all windows
- Black Birdseye Maple wood trim
- COMAND cockpit management & data system-inc: AM/FM/Weatherband radio, integrated MP3 compatible 6-disc CD changer, large color LCD screen, (10) soft keys, fiber-optic communication among components
- Cargo area & cabin 12V pwr outlets- Cruise control
- Driver/passenger illuminated visor mirrors
- Electrically heated rear window w/auto shut off based on time & driving speed & exterior temp
- Front reading lamps- Front/rear floor mats
- Harman/kardon LOGIC7 digital surround sound system
- Illuminated entry system w/locator lighting
- Instrumentation-inc: fuel & coolant temp electronic bar-graph, tachometer, quartz clock
- Integrated HomeLink compatible (3) button garage door opener
- Leather-trimmed shift knob
- Leather-trimmed steering wheel w/audio & multi-function display controls
- MB-TEX upholstery- Mercedes-Benz Maintenance System Plus display
- Multi-function display in instrument cluster-inc: trip computer, exterior temp gauge, digital speedometer, audio status, reminder & malfunction indicator, driver-programmable settings, trip meter
- Night security illumination- Pwr door locks w/drive away locking
- Pwr windows w/1-touch express down & up
- SmartKey infrared remote-inc: trunk open, closing windows & sunroof open/close, panic alarm, fuel filler door, selective unlock
- Tele Aid global positioning system (GPS) satellite system-inc: stolen vehicle recovery, remote door unlock service, automatic alarm & collision notification
- Tire pressure monitor- White gauged instrument cluster

Mechanical

- 18" x 8.5" front 10-twin-spoke aluminum wheels
- 18" x 9.0" rear 10-twin-spoke aluminum wheels - 3.5L DOHC 24-valve V6 engine
- 4-piston front & 1-piston rear pwr ventilated disc brakes
- 4-wheel anti-lock disc brakes system (ABS) w/brake assist system
- 7-speed automatic electronically controlled driver-adaptive transmission
- Compact spare tire- Dual chrome exhaust tailpipes- Electronic stability program (ESP)
- Front/rear stabilizer bars, gas shock absorbers, coil springs
- Independent 4-link front & 5-arm multi-link rear suspension- Lowered sport suspension
- P245/40R18 front all-season performance tires
- P265/35R18 rear all-season performance tires- Rear wheel drive
- Vehicle-speed-sensitive pwr rack & pinion steering

Option Packages

Factory Installed

Packages

AMG SPORT PKG

-inc: 18" 5-spoke AMG wheels,
AMG front air dam & rear
bumper, dual chrome exhaust,
AMG premium leather steering
wheel w/black shift paddles

\$2,000

BUURL WALNUT WOOD TRIM

\$300

PREMIUM PKG 1

-inc: hands-free communication
system, DVD navigation, Sirius
satellite radio, pwr rear window
sunshade, heated front seats

\$2,410

PWR TRUNK CLOSER

\$530

WOOD & LEATHER STEERING WHEEL

\$550

SPORT PKG

-inc: 245/40R18 front &
265/35R18 rear tires, 18" 10-
twin-spoke wheels, sport rear
bumper, dual chrome exhaust
tailpipes, lowered sport-tuned
suspension, blue tinted glass,
black birdseye maple wood
trim, white gauges w/matte
chrome trim

METALLIC PAINT

\$710

LEATHER UPHOLSTERY

\$1,550

Option Packages Total

\$8,050

Iconic Preferred Cars

iconicpreferred.com

4808435171

2175 E 5th ST

Tempe, Arizona 85281

© 2023 AutoRevo - All rights reserved. - Powered by AutoRevo