

1999 Peterbilt 379 EXHD

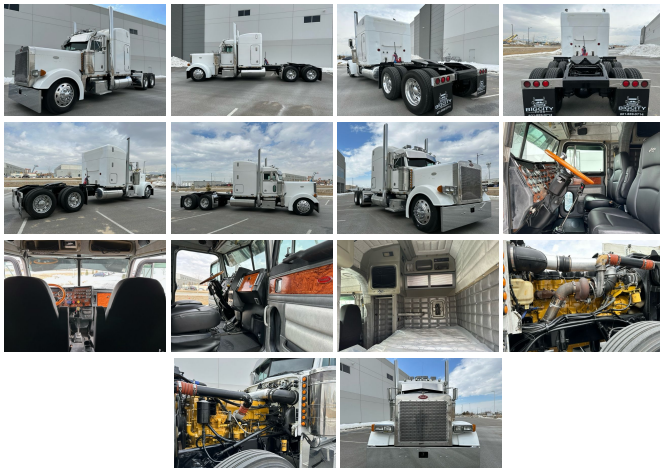
View this car on our website at bigcityrigs.com/7183489/ebrochure



Our Price **\$0**

Specifications:

Year:	1999
VIN:	463961
Make:	Peterbilt
Model/Trim:	379 EXHD
Condition:	Pre-Owned
Exterior:	White
Interior:	Black
Mileage:	1,400,000
Truck Type:	Semi - Sleeper Conventional




1999 - California Owned Rig
Peterbilt 379 EXHD
Pre Emission
No DEF - No DPF
ELD Exempt
60" Mid Roof Sleeper
Cat Power - 3406 E
550 HP!!!
3 Stage Engine Brake
1.4M Miles
Overhaul Performed in 2022
13 Speed Eaton Fuller Transmission
265 Wheelbase
358 Ratio
12 Front / 38K Rear Axle
Air Ride Suspension
Good 24.5 Rubber
New Brakes
(2) 120 Gallon Fuel Tanks
7" Exhaust Pipes
34" Hogebuilt Fenders
Dual Air Cleaners
Clean Truck
Serviced

This truck was purchased from container shipper from California who can no longer run this truck in that state due to emission laws. We installed new exhaust stacks, Seats, Mattress, Visor, Grill/ Surround, Rear/ Front Fenders, Bumper, Lights, Show Polished, Detailed, Sandblasted Frame w/ New Paint, Lug Nut Covers, Hub Caps, Plus Fluids and Filters. We will pick you up at the airport and have a 3rd party DOT inspection performed.

To see if this rig is available check out our website.
- www.BigCityRigs.com - 801.889.0714 - Dealer 225B

1999 Peterbilt 379 EXHD
Big City Rigs - 801-435-0900 - View this car on our website at bigcityrigs.com/7183489/ebrochure

Our Location :



1999 Peterbilt 379 EXHD
Big City Rigs - 801-435-0900 - View this car on our website at bigcityrigs.com/7183489/ebrochure

Installed Options

The Detailed Equipment Information is limited in scope, and Big City Rigs (BCR) has not inspected any aspects or components of the equipment other than those expressly set forth herein. Unless expressly stated, we make no representations or warranties, express or implied, concerning the equipment or its components, including without limitation any representations or warranties concerning functionality, conformity or compliance with any safety standard or requirement of any applicable authority or regulatory body, fitness for any particular purpose, or merchantability. You are strongly advised to perform your own detailed inspection of the equipment prior to purchasing.