

2013 Ford Edge SEL

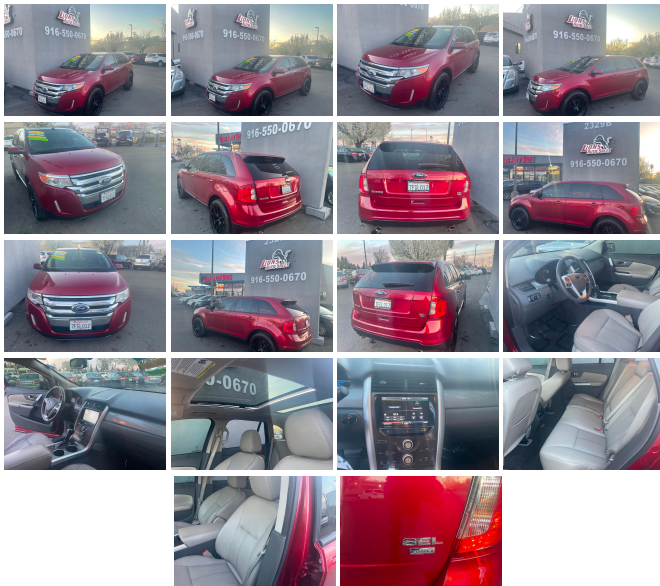
View this car on our website at lionsautosales.net/7182984/ebrochure



Our Price **\$11,995**

Specifications:

Year:	2013
VIN:	2FMDK4JC1DBC85772
Make:	Ford
Stock:	C85772
Model/Trim:	Edge SEL
Condition:	Pre-Owned
Body:	SUV
Exterior:	Red
Engine:	3.5L TI-VCT V6 ENGINE
Interior:	Gray
Mileage:	96,886
Drivetrain:	All Wheel Drive
Economy:	City 18 / Highway 25



2013 Ford Edge SEL

Lions Auto Sales - (916) 550-0670 - View this car on our website at lionsautosales.net/7182984/ebrochure

Our Location :



2013 Ford Edge SEL

Lions Auto Sales - (916) 550-0670 - View this car on our website at lionsautosales.net/7182984/ebrochure

Installed Options

Interior

- (2) coat hooks- (4) 12V aux pwr outlets- (8) cup/bottle holders- Accessory delay
- Adjustable head restraints- Below floor rear cargo management system- Cargo area light
- Cargo net- Cruise control- Dark slate metallic center stack finish
- Dual sunvisors w/illuminated vanity mirrors
- Dual-zone electronic air conditioning -inc: cabin air filter - Electrochromic rearview mirror
- Front & rear floor mats- Front & rear passenger grab handles
- Front center console -inc: storage tray, armrest, deep storage bin, (2) cupholders
- Front seatback pockets
- Front unique cloth front bucket seats -inc: 10-way pwr driver seat, pwr driver lumbar/recline, 4-way manual passenger seat
- Front/rear dome lights- Front/rear door map pockets- Glove box- Illuminated entry
- Instrumentation -inc: tachometer, compass- Leather shift knob
- Leather-wrapped steering wheel -inc: cruise controls, 5-way MyFord controls, audio controls
- Manual tilt/telescoping steering column- Overhead console w/sunglass holder
- Pewter instrument panel appearance- Pwr locks w/Autolock
- Pwr windows -inc: driver one-touch up/down, driver front/rear disable
- Rear cargo area tie-downs- Rear window defroster- Remote keyless entry
- Second row reclining 60/40 split fold-flat bench seat -inc: EasyFold seat release, fold-down armrest
- SecuriCode keyless-entry keypad
- SecuriLock encrypted passive anti-theft system (EPATS)

Exterior

- 17" spare tire- 18" painted aluminum wheels- Auto on/off headlamps w/wiper activation
- Bi-functional projector beam halogen headlamps- Black rocker moldings
- Body-color door handles
- Body-color manual-folding pwr heated mirrors -inc: integrated blind spot mirrors, security approach lamps

- Body-color rear spoiler- Chrome grille- Dual speed rear wiper w/washer
- Intermittent speed-sensitive front windshield wipers- P245/60R18 all-season BSW tires
- Privacy tinted rear windows- Solar tinted front door window glass
- Supplemental park lamps

Safety

- (2) coat hooks- (4) 12V aux pwr outlets- (8) cup/bottle holders- Accessory delay
- Adjustable head restraints- Below floor rear cargo management system- Cargo area light
- Cargo net- Cruise control- Dark slate metallic center stack finish
- Dual sunvisors w/illuminated vanity mirrors
- Dual-zone electronic air conditioning -inc: cabin air filter - Electrochromic rearview mirror
- Front & rear floor mats- Front & rear passenger grab handles
- Front center console -inc: storage tray, armrest, deep storage bin, (2) cupholders
- Front seatback pockets
- Front unique cloth front bucket seats -inc: 10-way pwr driver seat, pwr driver lumbar/recline, 4-way manual passenger seat
- Front/rear dome lights- Front/rear door map pockets- Glove box- Illuminated entry
- Instrumentation -inc: tachometer, compass- Leather shift knob
- Leather-wrapped steering wheel -inc: cruise controls, 5-way MyFord controls, audio controls
- Manual tilt/telescoping steering column- Overhead console w/sunglass holder
- Pewter instrument panel appearance- Pwr locks w/Autolock
- Pwr windows -inc: driver one-touch up/down, driver front/rear disable
- Rear cargo area tie-downs- Rear window defroster- Remote keyless entry
- Second row reclining 60/40 split fold-flat bench seat -inc: EasyFold seat release, fold-down armrest
- SecuriCode keyless-entry keypad
- SecuriLock encrypted passive anti-theft system (EPATS)

Mechanical

- 3.16 axle ratio- 3.5L Ti-VCT V6 Engine
- 6-speed SelectShift automatic transmission -inc: sport mode - All-wheel drive
- Battery saver- Dual polished stainless round exhaust tips- Easy Fuel capless refueling
- One-touch integrated start- Pwr assist rack & pinion steering

Option Packages

Factory Installed Packages

-
3.5L TI-VCT V6 ENGINE

Lions Auto Sales

lionsautosales.net

(916) 550-0670

2329 Fulton Ave

Sacramento, CA 95825

© 2023 AutoRevo - All rights reserved. - Powered by AutoRevo