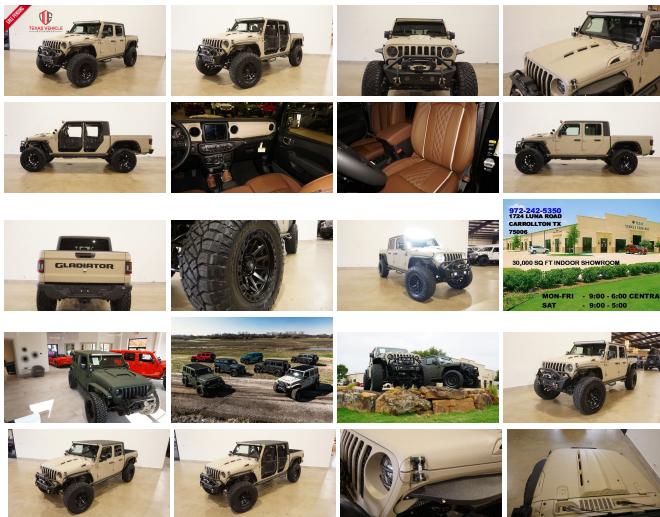


## 2023 Jeep Gladiator Sport 4X4 DUPONT KEVLAR,LIFTED,BUMPERS,LED'S,NAV

View this car on our website at [tveauto.com/7182913/ebrochure](https://tveauto.com/7182913/ebrochure)



Our Price **\$80,900**

### Specifications:

Year:	2023
VIN:	1C6HJTAG7PL516563
Make:	Jeep
Stock:	516563
Model/Trim:	Gladiator Sport 4X4 DUPONT KEVLAR,LIFTED,BUMPERS,LED'S,NAV
Condition:	Pre-Owned
Body:	Pickup Truck
Exterior:	Tan
Engine:	ENGINE: 3.6L V6 24V VVT UPG I W/ESS
Interior:	Brown Leather
Transmission:	TRANSMISSION: 8-SPEED AUTOMATIC (850RE)
Mileage:	54
Drivetrain:	4 Wheel Drive
Economy:	City 16 / Highway 22

NATION WIDE FINANCING

SUBMIT CREDIT APP [WWW.TVEAUTO.COM](https://www.tveauto.com)

OR CALL 972-242-5350

**"GOBI TAN EDITION"**

CUSTOM BUILT **KEVLAR** 2023 JEEP  
GLADIATOR SPORT 4X4 WITH 24S  
PACKAGE

UPGRADES INCLUDE:

## UPGRADES INCLUDE:

- \* GOBI TAN KEVLAR COATING WITH BLACK ACCENTS
- \* CUSTOM ALEA BROWN LEATHER WITH TAN STITCHING
- \* FACTORY REMOTE START
- \* COLD WEATHER GROUP
- \* POPULAR EQUIPMENT PACKAGE
- \* ACTIVE SAFETY GROUP
- \* FACTORY 8.4 INCH TOUCH SCREEN NAVIGATION WITH HD AM/FM/SIRIUS STEREO & ALPINE PREMIUM AUDIO SYSTEM
- \* FACTORY BACK-UP CAMERA
- \* U-CONNECT
- \* 4 BODY ARMOR TRAIL DOORS & RECON MIRRORS
- \* FAB FOURS STUBBY FRONT BUMPER WITH LED FOGLIGHTS
- \* FRONT D-RINGS & ISOLATORS (GOBI TAN)
- \* SMITTYBILT NEW GEN 3 "X20" 10,000 LB WATERPROOF AND WIRELESS CONTROL WINCH WITH SYNTHETIC ROPE
- \* FACTOR 55 PROLINK (BLACK)
- \* FACTORY LED HEADLIGHTS
- \* RUGGED RIDGE BLACK HEADLIGHT GUARDS
- \* CUSTOM JT HEAT EXPULSION HOOD
- \* DRAKE OFF ROAD HOOD LATCHES
- \* DV8 OFF ROAD JT SLIM STEEL FENDER FLARES
- \* DV8 OFF ROAD FRONT & REAR INNER FENDERS
- \* TERAFLX 3.5" SUSPENSION LIFT KIT WITH TERAFLX FALCON SHOCKS

- \* TERAFLX FALCON STABILIZER KIT
- \* MOPAR AUXILIARY SWITCH BANK KIT
- \* 50" LED LIGHT BAR AND 4 RIGID INDUSTRIES DUALY D2 LED PILLAR LIGHTS
- \* SMITTYBILT BLACK TUBULAR STEPS
- \* SPRAY IN BEDLINER
- \* ORACLE LED TAIL LIGHTS
- \* DV8 OFF ROAD REAR BUMPER WITH REAR PARK DISTANCE SENSORS
- \* ALL WEATHER FLOOR MATS
- \* TAZER JL PROGRAMMER WITH SPEEDOMETER CALIBRATION
- \* 20" FUEL MATTE BLACK "COVERT" WHEELS
- \* BRAND NEW NITTO RIDGE GRAPPLER 38X13.50R/20 TIRES

WE BUILD EVERY JEEP WITH PRIDE! DO NOT HESITATE TO CALL US WITH THIS JEEP BUILD. WE CAN MAKE CHANGES TO THIS JEEP BUILD OR CUSTOM BUILD ANY JEEP TO YOUR PREFERENCE. GIVE US A CALL @ 972-242-5350 OR STOP BY FOR A TEST DRIVE. 1724 LUNA RD IN CARROLLTON - 2 MILES NORTH OF 635.

## Vehicle History Report : as Of 04/19/2024

**CARFAX**

### Snapshot

#### 2023 JEEP GLADIATOR SPORT S



No accidents or damage reported to CARFAX



1 Service history record



CARFAX 1-Owner vehicle



Personal vehicle



Last owned in Texas



11 Last reported odometer reading



**FREE CARFAX Report**

See the full CARFAX Report for additional information

\*carfax Snapshot is a reflection of available information on the date the report was pulled. carfax is constantly being updated with new information and is subject to change at any time.

## Our Location :



2023 Jeep Gladiator Sport 4X4 DUPONT KEVLAR,LIFTED,BUMPERS,LED'S,NAV

Texas Vehicle Exchange - 972-242-5350 - View this car on our website at [veauto.com/7182913/ebrochure](http://veauto.com/7182913/ebrochure)

## Installed Options

### Interior

- 6-Way Driver Seat -inc: Manual Recline, Height Adjustment, Fore/Aft Movement and Manual Lumbar Support
- Apple CarPlay- Cloth Low-Back Bucket Seats
- Front Seats w/Cloth Back Material and Manual Driver Lumbar
- Full Carpet Floor Covering -inc: Carpet Front And Rear Floor Mats
- Gauges -inc: Speedometer, Odometer, Engine Coolant Temp, Tachometer, Engine Hour Meter, Trip Odometer and Trip Computer
- Google Android Auto- Manual Air Conditioning
- Proximity Key For Push Button Start Only - Trip Computer- 2 12V DC Power Outlets
- 2 Seatback Storage Pockets
- 4-Way Passenger Seat -inc: Manual Recline and Fore/Aft Movement
- 60-40 Folding Split-Bench Front Facing Fold Forward Seatback Cloth Rear Seat
- Air Filtration- Analog Appearance- Compass- Cruise Control w/Steering Wheel Controls
- Day-Night Rearview Mirror- Delayed Accessory Power- Fade-To-Off Interior Lighting
- Front And Rear Map Lights- Front Center Armrest w/Storage
- Full Floor Console w/Locking Storage and 2 12V DC Power Outlets
- HVAC -inc: Console Ducts- Illuminated Front Cupholder- Illuminated Rear Cupholder
- Instrument Panel Bin, Dashboard Storage, Driver / Passenger And Rear Door Bins

## Option Packages

### Factory Installed Packages

ENGINE: 3.6L V6 24V VVT UPG I W/ESS

TRANSMISSION: 8-SPEED AUTOMATIC (850RE)

-inc: Transmission Skid Plate, Selec-Speed Control **\$2,000**

8.4" RADIO & PREMIUM AUDIO GROUP

-inc: SiriusXM Radio Service, SiriusXM Traffic Plus, Radio: Uconnect 4C Nav w/8.4" Display, Rear View Auto Dim Mirror, Console Bin Task Light, 5-Year SiriusXM Travel Link Service, GPS Navigation, 5-Year SiriusXM Traffic Service, 4G LTE Wi-Fi Hot Spot, Media Hub w/2 Charge Only USBs, 8.4" Touchscreen Display, Off-Road Info Pages, Alpine Premium Audio System, 220 Amp Alternator, SiriusXM Satellite Radio, 400W Inverter, HD Radio, Air Conditioning w/Auto Temp Control, 1-Year SiriusXM Guardian Trial, **\$2,295**

- Integrated Center Stack Radio
- Interior Trim -inc: Metal-Look Instrument Panel Insert and Metal-Look Console Insert
- Locking Glove Box
- Manual Adjustable Front Head Restraints and Foldable Rear Head Restraints
- Manual Tilt/Telescoping Steering Column- Outside Temp Gauge
- Redundant Digital Speedometer- Sentry Key Immobilizer- Systems Monitor
- USB Host Flip- Urethane Gear Shifter Material
- Vanity w/Driver And Passenger Auxiliary Mirror

## Exterior

- Black Front Bumper w/2 Tow Hooks- Black Rear Bumper w/1 Tow Hook
- Front Fog Lamps- Manual Convertible Top w/Fixed Roll-Over Protection
- Wheels: 17" x 7.5" Tech Silver Aluminum
- Aero-Composite Halogen Headlamps w/Delay-Off- Black Door Handles
- Black Fender Flares- Black Side Windows Trim- Body-Colored Grille- Clearcoat Paint
- Full-Size Spare Tire Stored Underbody w/Crankdown- Galvanized Steel/Aluminum Panels
- Regular Box Style- Removable Rear Window- Steel Spare Wheel
- Tailgate Rear Cargo Access- Tires: 245/75R17 H/T- Variable Intermittent Wipers

## Safety

- 6-Way Driver Seat -inc: Manual Recline, Height Adjustment, Fore/Aft Movement and Manual Lumbar Support
- Apple CarPlay- Cloth Low-Back Bucket Seats
- Front Seats w/Cloth Back Material and Manual Driver Lumbar
- Full Carpet Floor Covering -inc: Carpet Front And Rear Floor Mats
- Gauges -inc: Speedometer, Odometer, Engine Coolant Temp, Tachometer, Engine Hour Meter, Trip Odometer and Trip Computer
- Google Android Auto- Manual Air Conditioning
- Proximity Key For Push Button Start Only - Trip Computer- 2 12V DC Power Outlets
- 2 Seatback Storage Pockets
- 4-Way Passenger Seat -inc: Manual Recline and Fore/Aft Movement
- 60-40 Folding Split-Bench Front Facing Fold Forward Seatback Cloth Rear Seat
- Air Filtration- Analog Appearance- Compass- Cruise Control w/Steering Wheel Controls
- Day-Night Rearview Mirror- Delayed Accessory Power- Fade-To-Off Interior Lighting
- Front And Rear Map Lights- Front Center Armrest w/Storage
- Full Floor Console w/Locking Storage and 2 12V DC Power Outlets
- HVAC -inc: Console Ducts- Illuminated Front Cupholder- Illuminated Rear Cupholder
- Instrument Panel Bin, Dashboard Storage, Driver / Passenger And Rear Door Bins
- Integrated Center Stack Radio
- Interior Trim -inc: Metal-Look Instrument Panel Insert and Metal-Look Console Insert
- Locking Glove Box
- Manual Adjustable Front Head Restraints and Foldable Rear Head Restraints
- Manual Tilt/Telescoping Steering Column- Outside Temp Gauge
- Redundant Digital Speedometer- Sentry Key Immobilizer- Systems Monitor
- USB Host Flip- Urethane Gear Shifter Material
- Vanity w/Driver And Passenger Auxiliary Mirror

## Mechanical

- 4-Wheel Disc Brakes w/4-Wheel ABS, Front And Rear Vented Discs, Brake Assist and Hill Hold Control
- Class II Towing Equipment -inc: Hitch and Trailer Sway Control
- Transmission: 6-Speed Manual- 1700# Maximum Payload- 180 Amp Alternator
- 22 Gal. Fuel Tank- 3 Skid Plates- 3.73 Rear Axle Ratio- 50 State Emissions
- 650CCA Maintenance-Free Battery w/Run Down Protection- Auto Locking Hubs
- Brake Actuated Limited Slip Differential- Electro-Hydraulic Power Assist Steering
- Engine Auto Stop-Start Feature- Engine Oil Cooler
- Engine: 3.6L V6 24V VVT UPG I w/ESS- Front And Rear Anti-Roll Bars
- GVWR: 6,305 lbs- HD Shock Absorbers- Leading Link Front Suspension w/Coil Springs
- Manual Transfer Case- Normal Duty Plus Suspension- Part-Time Four-Wheel Drive
- Single Stainless Steel Exhaust- Solid Axle Rear Suspension w/Coil Springs
- Trailer Wiring Harness

SiriusXM Travel Link, Emergency/Assistance  
Call, 115V Auxiliary Power Outlet

### AUXILIARY SWITCH GROUP

-inc: 700 Amp Maintenance Free Battery,  
Auxiliary Switches

\$495

### COLD WEATHER GROUP

-inc: Heated Steering Wheel, Tires: 245/75R17  
BSW All-Terrain, Heated Front Seats

\$1,345

### POPULAR EQUIPMENT PACKAGE

-inc: Convenience Group, Universal Garage Door  
Opener, Daytime Running Lamp System, Trailer  
Tow Package, Trailer Hitch Zoom, Class IV  
Receiver Hitch, Heavy Duty Engine Cooling, 240  
Amp Alternator, Black 3-Piece Hard Top,  
Freedom Panel Storage Bag, Rear Window  
Defroster, Rear Sliding Window

\$1,895

### SAFETY GROUP

-inc: ParkSense Rear Park Assist System, Blind  
Spot & Cross Path Detection, LED Taillamps

\$1,395

### QUICK ORDER PACKAGE 24S SPORT S

-inc: Engine: 3.6L V6 24V VVT UPG I w/ESS,  
Transmission: 8-Speed Automatic (850RE),  
Speed Sensitive Power Locks, Automatic  
Headlamps, Deep Tint Sunscreen Windows,  
Front 1-Touch Down Power Windows, Sport S,  
Power Heated Mirrors, Premium Wrapped  
Steering Wheel, Security Alarm, Power Tailgate  
Lock, Remote Keyless Entry, Sun Visors  
w/Illuminated Vanity Mirrors

\$3,400

### Option Packages Total

\$12,825

972-242-5350

1724 Luna Road

Carrollton, TX 75006

© 2024 AutoRevo - All rights reserved. - Powered by AutoRevo