



2004 Buick Regal LS

Our Price \$4,800

View this vehicle on our website at blokauto.com



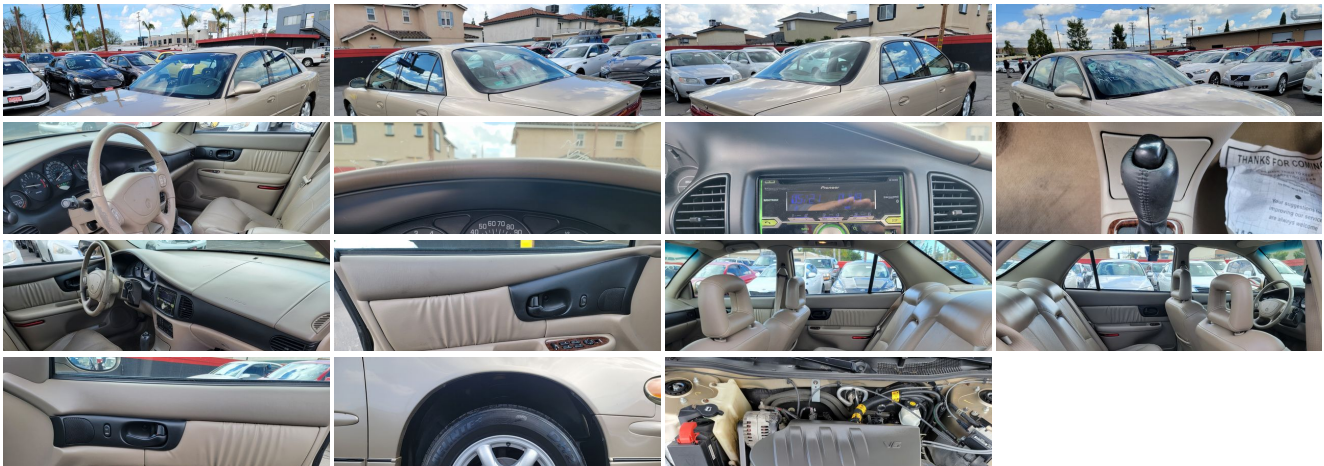
[310-326-3604](tel:310-326-3604)

9624 Artesia Blvd , Bellflower, California 90706

Photos

Details

Contact



Specifications:

Year:	2004
VIN:	2G4WB52K441182176
Make:	Buick
Stock:	78540
Model/Trim:	Regal LS
Condition:	Pre-Owned
Body:	Sedan
Engine:	ENGINE, 3.8L 3800 V6 SFI (200 HP [149.2 kW] @ 5200 rpm, 225 lb.-ft. [303.7 N-m] @ 4000 rpm)
Interior:	Leather
Transmission:	Auto
Mileage:	91,886
Drivetrain:	Front Wheel Drive
Economy:	City 20 / Highway 30

Vehicle Description

Please call or e-mail to check availability!!! All of our vehicles are available for purchase Monday-Friday from 8:00 AM - 6:00 PM, Saturday 8:00 AM - 5:00 PM and Sunday from 9:00 AM to 6:00 PM. Please note we do not offer any financing and/or payment plans of any kind. For more information, please call (310)-326-3604 and press 1 for the sales department. We are currently not having any auctions on Saturdays due to Covid 19.

WHEN CALLING THE SALES DEPARTMENT, PLEASE PROVIDE THE STOCK NUMBER FOR THE VEHICLE YOU ARE INTERESTED IN!!!

WE HAVE 300+ CARS AT OUR LOCATION!!! WE RECEIVE NEW CARS EVERY WEEK AND OUR WEBSITE IS UPDATED ON A DAILY BASIS!!!

VISIT WWW.BLOKAUTO.COM TO SEE OUR FULL INVENTORY!!!

Installed Options

Interior

- Air conditioning, dual-zone, manual climate control and rear seat heating/ cooling outlets
- Convenience Plus features, includes delayed entry and exit lighting, theater dimming, battery rundown protection, lockout protection, delayed locking, flash-to-pass feature, daytime running lamps with Twilight Sentinel, retained accessory power and reminder tones for ignition key, headlamps, turn signals, parking brake "on" and low fuel
- Door locks, power programmable, enhanced safety, includes lockout protection
- Dunbar Cloth seat trim- Keyless entry, remote, includes trunk release
- Lighting, interior, includes glovebox, trunk, front seat reading and front and rear courtesy
- Mirror, inside rearview, manual day/night, includes dual reading lights
- Seats, 45/45 front buckets, 2-way adjustable head restraints, includes manual recliners, center console with storage and dual cupholders
- Sound system, ETR AM/FM stereo with CD player, includes Radio Data System, seek-and-scan, digital clock, auto-tone control, speed-compensated volume and TheftLock

Option Packages

Factory Installed Packages

ENGINE, 3.8L 3800 V6 SFI (200 HP [149.2 kW] @ 5200 rpm, 225 lb.-ft. [303.7 N-m] @ 4000 rpm)

- Trunk release, power, remote
- Visors, vanity mirrors, driver and front passenger, covered
- Acoustical insulation, extensive- Air filtration system- Assist handle, front passenger
- Console, floor, includes dual cupholders, storage and auxiliary power outlets
- Cruise control, electronic with set and resume speed, includes telltale in instrument panel cluster
- Defogger, rear-window, electric, includes front and side window outlets, driver and front passenger
- Instrumentation, analog, includes speedometer, temperature, fuel, tachometer, trip odometer, door and trunk ajar, washer fluid level and oil-life monitor
- Map pockets, front and rear doors and front passenger seatback
- Retained accessory power, power windows and radio remain operational after ignition is switched off for 10 minutes or until a door is opened
- Seat adjuster, power, driver 6-way
- Sound system feature, 6-speakers, Concert Sound II
- Steering column, Tilt-Wheel, adjustable- Steering wheel, leather-wrapped rim
- Theft-deterrent system, PASS-Key II
- Windows, power, includes driver express-down and passenger lockout

Exterior

- Daytime running lamps
- Headlamps, halogen, composite, includes Twilight Sentinel and cornering lamps
- Fog lamps, front, integral in front fascia- Glass, Solar-Ray light tinted
- Mirrors, outside rearview, power, body-color, folding- Wipers, intermittent, front

Safety

- Air conditioning, dual-zone, manual climate control and rear seat heating/ cooling outlets
- Convenience Plus features, includes delayed entry and exit lighting, theater dimming, battery rundown protection, lockout protection, delayed locking, flash-to-pass feature, daytime running lamps with Twilight Sentinel, retained accessory power and reminder tones for ignition key, headlamps, turn signals, parking brake "on" and low fuel
- Door locks, power programmable, enhanced safety, includes lockout protection
- Dunbar Cloth seat trim- Keyless entry, remote, includes trunk release
- Lighting, interior, includes glovebox, trunk, front seat reading and front and rear courtesy
- Mirror, inside rearview, manual day/night, includes dual reading lights
- Seats, 45/45 front buckets, 2-way adjustable head restraints, includes manual recliners, center console with storage and dual cupholders
- Sound system, ETR AM/FM stereo with CD player, includes Radio Data System, seek-and-scan, digital clock, auto-tone control, speed-compensated volume and TheftLock
- Trunk release, power, remote
- Visors, vanity mirrors, driver and front passenger, covered
- Acoustical insulation, extensive- Air filtration system- Assist handle, front passenger
- Console, floor, includes dual cupholders, storage and auxiliary power outlets
- Cruise control, electronic with set and resume speed, includes telltale in instrument panel cluster
- Defogger, rear-window, electric, includes front and side window outlets, driver and front passenger
- Instrumentation, analog, includes speedometer, temperature, fuel, tachometer, trip odometer, door and trunk ajar, washer fluid level and oil-life monitor
- Map pockets, front and rear doors and front passenger seatback
- Retained accessory power, power windows and radio remain operational after ignition is switched off for 10 minutes or until a door is opened
- Seat adjuster, power, driver 6-way
- Sound system feature, 6-speakers, Concert Sound II
- Steering column, Tilt-Wheel, adjustable- Steering wheel, leather-wrapped rim
- Theft-deterrent system, PASS-Key II
- Windows, power, includes driver express-down and passenger lockout

Mechanical

- Brakes, 4-wheel disc- Tires, P215/70R15, all-season, blackwall
- Transmission, 4-speed automatic, electronically controlled with overdrive
- Wheel covers, 15" (38.1 cm) bolt-on, deluxe
- Engine, 3.8L 3800 V6 SFI (200 HP [149.2 kW] @ 5200 rpm, 225 lb.-ft. [303.7 N-m] @ 4000 rpm)
- Exhaust outlets, stainless-steel, dual- Front wheel drive
- Fuel capacity, approximate, 17 gallons- Steering, power, rack-and-pinion
- Suspension, 4-wheel independent, touring

BLOK Charity Auto Clearance

BLOK Charity Auto Clearance

View this car on our website at blokauto.com/7182442

Website: blokauto.com

Phone: [310-326-3604](tel:310-326-3604)

Map: [9624 Artesia Blvd, Bellflower, California 90706](#)

