

2012 RAM 2500 LARAMIE LONGHORN

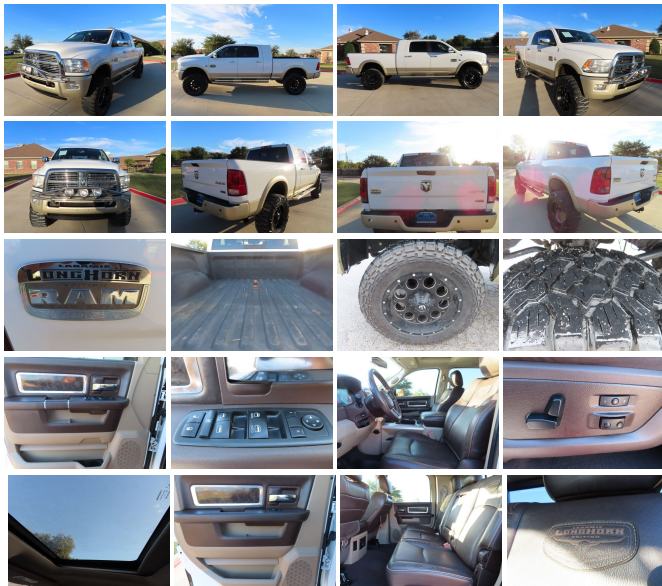
View this car on our website at callahanmotorcompany.com/7180771/ebrochure



Our Price **\$44,975**

Specifications:

Year:	2012
VIN:	3C6UD5PL4CG284629
Make:	RAM
Stock:	20627
Model/Trim:	2500 LARAMIE LONGHORN
Condition:	Pre-Owned
Body:	Pickup Truck
Exterior:	Bright White
Engine:	6.7L I6 CUMMINS TURBO DIESEL ENGINE
Interior:	Light Pebble Beige/Bark Brown Leather
Mileage:	82,559
Drivetrain:	4 Wheel Drive



This 2012 Ram 2500 Laramie Longhorn is proudly offered by Callahan Motor Company. The Ram 2500 Laramie Longhorn's pristine good looks were combined with the Ram high standard of excellence in order to make this a unique find. Simply put, this Four Wheel Drive is engineered with higher standards. Enjoy improved traction and safety while driving this 4WD Ram 2500 Laramie Longhorn. In addition to being well-cared for, this Ram 2500 has very low mileage making it a rare find. More information about the 2012 Ram 2500: The Ram 2500 and 3500 are heavy-duty trucks that sacrifice some ride quality and maneuverability, compared to lighter-duty pickups, in favor of improved towing and hauling ability. The heavy-duty Ram models are, like rival models from Chevrolet, GMC and Ford, far more luxurious and comfortable than their predecessors, even as they haven't given up any serious work ability. Entertainment and connectivity features abound and hint that these trucks see use well beyond the construction site. Ram says that the 2500 and 3500 are the first in their segment to offer an available 10-speaker surround-sound system, as well as a number of other premium options such as Sirius Backseat TV. Strengths of this model include serious towing and hauling ability, stump-pulling Cummins turbo-diesel, full set of luxury and entertainment options, and Tough, work-oriented construction.

Our Location :



2012 RAM 2500 LARAMIE LONGHORN

Callahan Motor Company LLC - 817-562-5223 - View this car on our website at callahanmotorcompany.com/7180771/ebrochure

Installed Options

Interior

- Premium leather bucket seats
- 10-way pwr driver w/memory & front 6-way passenger seats - Heated front seats
- Ventilated front seats- Pwr lumbar adjust- Rear 60/40 split-folding bench seat
- Heated second row seats- Full length premium floor console- Carpeted floor covering
- Luxury front & rear floor mats- Mopar door sill guards
- Premium leather wrapped steering wheel- Heated steering wheel
- Steering wheel mounted audio controls- Tilt steering column
- Sentry Key theft deterrent system - Laramie longhorn instrument cluster
- Vehicle info center- Temp & compass gauge- Traveler/mini trip computer
- 120-MPH primary speedometer- Pwr accessory delay
- Radio, driver seat, mirror & pedal memory - Pwr windows w/front one-touch up & down
- Pwr locks- Pwr adjustable pedals w/memory- Remote keyless entry- Remote start system
- Speed control- Security alarm- Air conditioning w/dual zone temp control - 12V pwr outlet
- 115V pwr outlet- Auto-dimming rearview mirror- Premium door trim panel
- Woodgrain instrument panel bezel- Longhorn interior accents
- Overhead console w/universal garage door opener - Driver/passenger assist handles
- Sun visors w/illuminated vanity mirrors- LED interior lighting- Glove box lamp
- Rear dome lamp w/on/off switch- Leather wrapped shift knob- Behind seat storage bin

Exterior

- 17" x 8.0" aluminum wheels - LT265/70R17E on/off-road OWL tires- Center hub
- 17" steel spare wheel- Full size spare tire- Winch-type tire carrier- Painted front bumper
- Painted rear bumper- Front bumper sight shields- Accent fender flares
- Accent color running boards- Black-out tape- Front air dam- Bright/bright grille
- Quad halogen headlamps- Automatic headlamps- Body color headlamp filler panel
- Cargo lamp- Fog lamps- Underhood lamp
- Fold-away pwr multi-function mirrors -inc: chrome mirror caps, integrated turn signals, courtesy lamps, memory, heating element, auto-dimming

- Tinted glass- Body color fuel filler door- Body color/chrome door handles
- Variable speed intermittent windshield wipers- Laramie longhorn badge
- Front license plate bracket- Pwr sliding rear window- Locking tailgate
- Vendor painted cargo box tracking- Spray-in bedliner

Safety

- Premium leather bucket seats
- 10-way pwr driver w/memory & front 6-way passenger seats - Heated front seats
- Ventilated front seats- Pwr lumbar adjust- Rear 60/40 split-folding bench seat
- Heated second row seats- Full length premium floor console- Carpeted floor covering
- Luxury front & rear floor mats- Mopar door sill guards
- Premium leather wrapped steering wheel- Heated steering wheel
- Steering wheel mounted audio controls- Tilt steering column
- Sentry Key theft deterrent system - Laramie longhorn instrument cluster
- Vehicle info center- Temp & compass gauge- Traveler/mini trip computer
- 120-MPH primary speedometer- Pwr accessory delay
- Radio, driver seat, mirror & pedal memory - Pwr windows w/front one-touch up & down
- Pwr locks- Pwr adjustable pedals w/memory- Remote keyless entry- Remote start system
- Speed control- Security alarm- Air conditioning w/dual zone temp control - 12V pwr outlet
- 115V pwr outlet- Auto-dimming rearview mirror- Premium door trim panel
- Woodgrain instrument panel bezel- Longhorn interior accents
- Overhead console w/universal garage door opener - Driver/passenger assist handles
- Sun visors w/illuminated vanity mirrors- LED interior lighting- Glove box lamp
- Rear dome lamp w/on/off switch- Leather wrapped shift knob- Behind seat storage bin

Mechanical

- 5.7L SMPI V8 Hemi engine w/variable valve timing
- 6-speed automatic transmission w/OD (REQ: EZC Engine) - 3.73 axle ratio
- Electronically controlled throttle- HD engine cooling- Tip start
- Next generation engine controller- Transmission oil cooler
- Electronic shift-on-the-fly transfer case- Conventional front axle- Conventional rear axle
- 10.5" rear axle ring gear diameter - 5500# front axle- Four-wheel drive
- 730-amp maintenance-free battery- 160-amp alternator- Tow hooks- 6'4" pickup box
- Trailer tow wiring w/4-pin connector- 7-pin wiring harness- Trailer brake control
- Class IV receiver hitch- 8800# GVWR- HD front shock absorbers
- HD rear shock absorbers- Front stabilizer bar- Pwr steering
- Pwr 4-wheel anti-lock disc brakes

Option Packages

Factory Installed Packages

-	
6.7L I6 CUMMINS TURBO DIESEL ENGINE	
-inc: 11.50 rear axle, Cummins turbo diesel badge, current generation engine controller, diesel exhaust brake, electronically controlled throttle, front bumper sight shields, 9600# GVWR	\$7,795
-	
Option Packages Total	\$7,795

Callahan Motor Company LLC

callahanmotorcompany.com

817-562-5223

9601 Denton Highway

Keller, TX 76244

© 2023 AutoRevo - All rights reserved. - Powered by AutoRevo

