

2016 Hyundai Veloster

View this car on our website at paniaguaautos.com/7179689/ebrochure

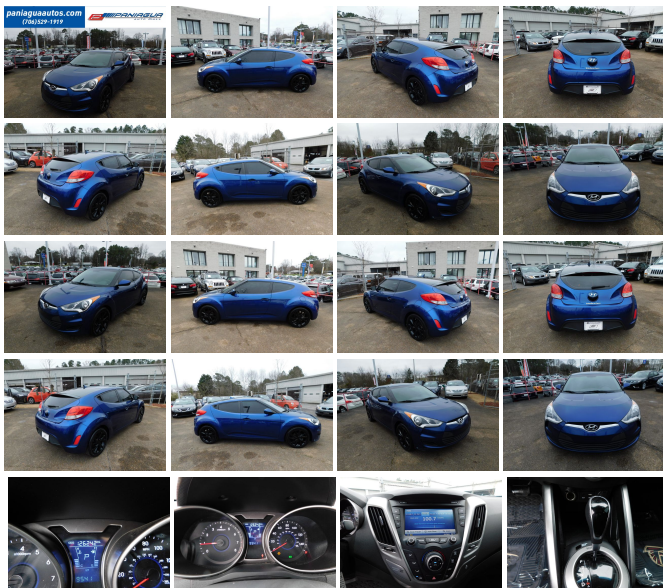


Our Price **\$9,995**

Specifications:

| | |
|----------------------|--|
| Year: | 2016 |
| VIN: | KMHTC6AD9GU260310 |
| Make: | Hyundai |
| Stock: | 8610 |
| Model/Trim: | Veloster |
| Condition: | Pre-Owned |
| Exterior: | Blue |
| Engine: | Engine: 1.6L 16-Valve 4-Cylinder GDI -inc: DOHC, Dual Continuously Variable Valve Timing (D-CVVT), aluminum block and head, full engine cover and hood insulator |
| Interior: | Black Cloth |
| Transmission: | AUTOMATIC |
| Mileage: | 126,242 |
| Drivetrain: | Front Wheel Drive |
| Economy: | City 28 / Highway 36 |

2016 HYUNDAI VELOSTER 1.6L 4 CYLINDER AUTOMATIC CLOTH INTERIOR ALL POWER HURRY IN TODAY AND CHECK OUT OUR MOST RECENT INVENTORY



Our Location :



2016 Hyundai Veloster

Paniagua Auto Mall - 706-529-1919& 423-472-4045 - View this car on our website at paniaguaautos.com/7179689/ebrochure

Installed Options

Interior

- Gauges -inc: Speedometer, Odometer, Engine Coolant Temp, Tachometer, Trip Odometer and Trip Computer
- Manual Air Conditioning- Power 1st Row Windows w/Driver 1-Touch Down
- Power Door Locks w/Autolock Feature- Power Rear Windows- Premium Cloth Seat Trim
- Remote Keyless Entry w/Illuminated Entry and Panic Button- Trip Computer
- 2 12V DC Power Outlets- 4-Way Passenger Seat- 6-Way Driver Seat
- 60-40 Folding Bench Front Facing Fold Forward Seatback Rear Seat - Air Filtration
- Cargo Features -inc: Tire Mobility Kit- Cargo Space Lights- Carpet Floor Trim
- Cruise Control w/Steering Wheel Controls- Day-Night Rearview Mirror
- Delayed Accessory Power- Digital/Analog Appearance- Driver And Passenger Door Bins
- Driver And Passenger Visor Vanity Mirrors w/Driver And Passenger Illumination, Driver And Passenger Auxiliary Mirror
- Driver Foot Rest- FOB Controls -inc: Cargo Access- Fade-To-Off Interior Lighting
- Front Bucket Seats -inc: 6-way adjustable driver's seat w/height adjustment, armrest storage box and front passenger slide/recline w/seatback pocket
- Front Cupholder- Front Map Lights- Full Carpet Floor Covering- Full Cloth Headliner
- Full Floor Console w/Covered Storage, Mini Overhead Console w/Storage, Rear Console w/Storage and 2 12V DC Power Outlets
- Glove Box- Immobilizer
- Interior Trim -inc: Metal-Look Instrument Panel Insert, Metal-Look Door Panel Insert, Metal-Look Console Insert and Chrome/Metal-Look Interior Accents
- Manual Adjustable Front Head Restraints and Manual Adjustable Rear Head Restraints
- Manual Tilt/Telescoping Steering Column- Outside Temp Gauge- Perimeter Alarm
- Rear Cupholder- Remote Releases -Inc: Mechanical Fuel- Rigid Cargo Cover
- Selective Service Internet Access

Exterior

- Auto Off Aero-Composite Halogen Daytime Running Headlamps
- Tires: P215/45HR17 87 Nexen- Wheels: 17" x 7.0J Alloy- Black Side Windows Trim

- Body-Colored Door Handles- Body-Colored Front Bumper
- Body-Colored Power Heated Side Mirrors w/Convex Spotter and Manual Folding
- Body-Colored Rear Bumper w/Black Rub Strip/Fascia Accent- Clearcoat Paint
- Fixed Rear Window w/Fixed Interval Wiper and Defroster
- Front Windshield -inc: Sun Visor Strip- Fully Galvanized Steel Panels
- Grille w/Chrome Bar- Liftgate Rear Cargo Access- Light Tinted Glass- Lip Spoiler
- Tire Mobility Kit- Variable Intermittent Wipers

Safety

- Gauges -inc: Speedometer, Odometer, Engine Coolant Temp, Tachometer, Trip Odometer and Trip Computer
- Manual Air Conditioning- Power 1st Row Windows w/Driver 1-Touch Down
- Power Door Locks w/Autolock Feature- Power Rear Windows- Premium Cloth Seat Trim
- Remote Keyless Entry w/Illuminated Entry and Panic Button- Trip Computer
- 2 12V DC Power Outlets- 4-Way Passenger Seat- 6-Way Driver Seat
- 60-40 Folding Bench Front Facing Fold Forward Seatback Rear Seat - Air Filtration
- Cargo Features -inc: Tire Mobility Kit- Cargo Space Lights- Carpet Floor Trim
- Cruise Control w/Steering Wheel Controls- Day-Night Rearview Mirror
- Delayed Accessory Power- Digital/Analog Appearance- Driver And Passenger Door Bins
- Driver And Passenger Visor Vanity Mirrors w/Driver And Passenger Illumination, Driver And Passenger Auxiliary Mirror
- Driver Foot Rest- FOB Controls -inc: Cargo Access- Fade-To-Off Interior Lighting
- Front Bucket Seats -inc: 6-way adjustable driver's seat w/height adjustment, armrest storage box and front passenger slide/recline w/seatback pocket
- Front Cupholder- Front Map Lights- Full Carpet Floor Covering- Full Cloth Headliner
- Full Floor Console w/Covered Storage, Mini Overhead Console w/Storage, Rear Console w/Storage and 2 12V DC Power Outlets
- Glove Box- Immobilizer
- Interior Trim -inc: Metal-Look Instrument Panel Insert, Metal-Look Door Panel Insert, Metal-Look Console Insert and Chrome/Metal-Look Interior Accents
- Manual Adjustable Front Head Restraints and Manual Adjustable Rear Head Restraints
- Manual Tilt/Telescoping Steering Column- Outside Temp Gauge- Perimeter Alarm
- Rear Cupholder- Remote Releases -Inc: Mechanical Fuel- Rigid Cargo Cover
- Selective Service Internet Access

Mechanical

- 13.2 Gal. Fuel Tank
- 36-Amp/Hr 410CCA Maintenance-Free Battery w/Run Down Protection
- 4-Wheel Disc Brakes w/4-Wheel ABS, Front Vented Discs and Brake Assist
- 90 Amp Alternator- Electric Power-Assist Speed-Sensing Steering
- Engine: 1.6L 16-Valve 4-Cylinder GDI -inc: DOHC, Dual Continuously Variable Valve Timing (D-CVVT), aluminum block and head, full engine cover and hood insulator
- Front And Rear Anti-Roll Bars- Front-Wheel Drive- Gas-Pressurized Shock Absorbers
- Quasi-Dual Stainless Steel Exhaust w/Chrome Tailpipe Finisher
- Strut Front Suspension w/Coil Springs- Torsion Beam Rear Suspension w/Coil Springs
- Transmission: 6-Speed EcoShift Dual Clutch -inc: paddle shifters, hillstart assist control, ignition key interlock system and electronic shift lock system

We sale used vehicles as is no warranty. We sale extended warranties ask one of our sales rep. for details.

Paniagua Auto Mall

paniaguaautos.com

706-529-1919& 423-472-4045

1776 E. Walnut Ave

Dalton, Georgia 30721

© 2024 AutoRevo - All rights reserved. - Powered by AutoRevo