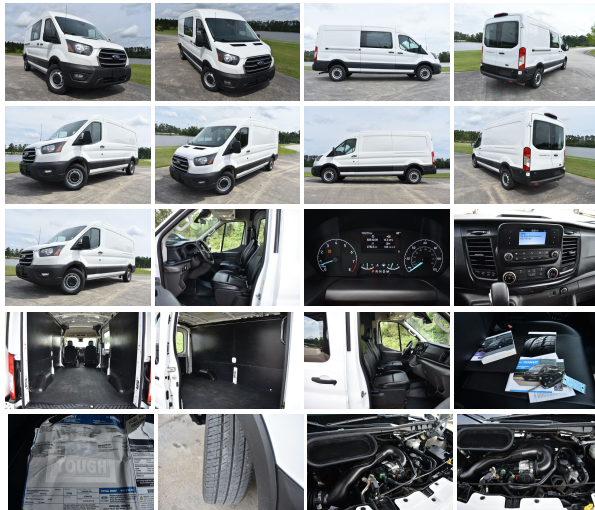


2020 Ford T250 Medium Roof

View this car on our website at trucksinlouisiana.com/7178969/ebrochure



Our Price **\$27,990**

Retail Value **~~\$43,000~~**

Specifications:

Year:	2020
VIN:	1FTBR1C83LKB03427
Make:	Ford
Model/Trim:	T250 Medium Roof
Condition:	Pre-Owned
Body:	Minivan/Van
Exterior:	White
Engine:	ENGINE: 3.5L PFDI V6 FLEX-FUEL
Interior:	Gray
Transmission:	Automatic w/OD
Mileage:	105,209
Drivetrain:	Rear Wheel Drive

READY TO WORK

You are looking at a 2020 Ford Transit 250 . It is powered with a 3.5L V-6 and automatic transmission. It is equipped with tilt, cruise, power windows, power locks, power mirrors, am/fm radio. Also included are the owner's manuals and one keyless remote.

The interior of this truck is in good shape for the mileage. The seats are in good shape. The vinyl floor is in good shape.

The exterior of this truck overall is in good shape. There maybe. normal work truck flaw, but nothing significant . If you are a serious buyer please call us and we will give you a thorough walk around to make sure it meets your criteria. The windshield is in good shape.

Mechanically this Transit starts right up and runs smooth. The transmission shifts smooth. The a/c blows ice cold. The front end is tight.

FINANCING: We do not do financing/ in house financing. However, if you have good credit (650 score or higher) we can suggest a lender within the state of Louisiana. If you are outside of Louisiana and have good credit we can also help with locate a lender.

NADA VALUES

LOAN	\$34,500
RETAIL	\$43,000

FINANCING: We do not do financing/ in house financing. However, if you have good credit (650 score

have good credit (650 score or higher) we can suggest a lender within the state of Louisiana. If you are outside of Louisiana and have good credit we can also help with locate a lender.
225-445-5381

Call any of our sales people to look at this truck!!!

This truck is located @ 13359 Miller Rd. Walker, LA 70785.

Exit I-12 at the Walker Rd.,
Exit #15

If you have any questions about this truck or would like to receive a CarFax, please call one of our Sales Representatives @ 225-326-2639 or 225-445-5381

Visit WWW.TRUCKSINLOUISIANA.C

It is the customer's responsibility to inspect the truck before agreement to purchase. Upon agreement to purchase, there is a \$500 deposit due within 48 hours. The deposit is non refundable unless a major issue was not disclosed by the seller. The remaining balance is due via cash, cashiers check, or bank wire within 5 days. If you need help with

days. If you need help with shipping call PJ @ All States Auto Transport: 1-866-342-1082, or 1-712-898-5727. There is also a mandatory \$195 Documentation charge.

At our dealership we work very hard to accurately describe our vehicles through text descriptions and elaborate photos. When you purchase a pre-owned vehicle it is not a new vehicle. Any used vehicle can have normal wear and blemishes. Before placing a bid please read the descriptions thoroughly, view all pictures and call one of our sales representatives for a complete walk a round description of the vehicle. All vehicles are sold as is no warranty.

Vehicle History Report : as Of 04/09/2024

CARFAX

Snapshot

2020 FORD TRANSIT 250



Damage reported: minor damage



MINOR



MODERATE

SEVERE

3 Service history records



CARFAX 1-Owner vehicle



Corporate vehicle



105,273 Last reported odometer reading



FREE CARFAX Report

See the full CARFAX Report for additional information

*carfax Snapshot is a reflection of available information on the date the report was pulled. carfax is constantly being updated with new information and is subject to change at any time.

Our Location :



2020 Ford T250 Medium Roof

Boardwalk Motorcars LLC - 225-326-2639 - View this car on our website at trucksinlouisiana.com/7178969/ebrochure

Installed Options

Interior

- Dark Palazzo Gray Vinyl Bucket Seats -inc: 2-way manual driver seat, 2-way manual passenger seat and driver armrest
- FordPass Connect 4G Mobile Hotspot Internet Access- Manual Air Conditioning
- Power Door Locks w/Autolock Feature
- Remote Keyless Entry w/Integrated Key Transmitter, Illuminated Entry and Panic Button
- Vinyl Front Bucket Seats- 2 12V DC Power Outlets- Analog Appearance
- Cargo Space Lights- Driver Foot Rest- Driver Seat- Fade-To-Off Interior Lighting
- Front Cloth Headliner- Front Cupholder- Front Map Lights
- Front Only Vinyl/Rubber Floor Covering
- Gauges -inc: Speedometer, Odometer, Engine Coolant Temp, Tachometer and Trip Odometer
- Instrument Panel Bin, Driver And Passenger Door Bins
- Interior Trim -inc: Metal-Look Instrument Panel Insert- Locking Glove Box
- Manual Adjustable Front Head Restraints- Manual Tilt/Telescoping Steering Column
- Partial Floor Console w/Storage, Full Overhead Console w/Storage and 2 12V DC Power Outlets
- Passenger Seat- Power 1st Row Windows w/Driver 1-Touch Down
- Securilock Anti-Theft Ignition (pats) Immobilizer- Urethane Gear Shifter Material

Exterior

- Auto On/Off Aero-Composite Halogen Auto High-Beam Headlamps
- Short-Arm Manual-Folding Power Adjust Mirrors- Sliding Rear Passenger Side Door
- Tailgate/Rear Door Lock Included w/Power Door Locks- Variable Intermittent Wipers
- Wheels: 16" Silver Steel w/Black Hubcap
- Black Bodyside Cladding and Black Wheel Well Trim- Black Door Handles
- Black Front Bumper- Black Grille- Black Rear Bumper w/1 Tow Hook
- Black Side Mirrors w/Convex Spotter and Manual Folding
- Black Side Windows Trim and Black Front Windshield Trim - Clearcoat Paint
- Front License Plate Bracket- Full-Size Spare Tire Stored Underbody w/Crankdown
- Fully Galvanized Steel Panels- Headlights-Automatic Highbeams- Laminated Glass
- Light Tinted Glass- Split Swing-Out Rear Cargo Access- Steel Spare Wheel
- Tires: 235/65R16C 121/119 R AS BSW

Safety

- Dark Palazzo Gray Vinyl Bucket Seats -inc: 2-way manual driver seat, 2-way manual passenger seat and driver armrest
- FordPass Connect 4G Mobile Hotspot Internet Access- Manual Air Conditioning
- Power Door Locks w/Autolock Feature
- Remote Keyless Entry w/Integrated Key Transmitter, Illuminated Entry and Panic Button
- Vinyl Front Bucket Seats- 2 12V DC Power Outlets- Analog Appearance
- Cargo Space Lights- Driver Foot Rest- Driver Seat- Fade-To-Off Interior Lighting
- Front Cloth Headliner- Front Cupholder- Front Map Lights
- Front Only Vinyl/Rubber Floor Covering
- Gauges -inc: Speedometer, Odometer, Engine Coolant Temp, Tachometer and Trip Odometer
- Instrument Panel Bin, Driver And Passenger Door Bins
- Interior Trim -inc: Metal-Look Instrument Panel Insert- Locking Glove Box
- Manual Adjustable Front Head Restraints- Manual Tilt/Telescoping Steering Column
- Partial Floor Console w/Storage, Full Overhead Console w/Storage and 2 12V DC Power Outlets
- Passenger Seat- Power 1st Row Windows w/Driver 1-Touch Down
- Securilock Anti-Theft Ignition (pats) Immobilizer- Urethane Gear Shifter Material

Mechanical

- 3780# Maximum Payload- 3900# Maximum Payload
- Transmission: 10-Spd Automatic w/OD & SelectShift -inc: auxiliary transmission oil cooler
- 25.1 Gal. Fuel Tank- 250 Amp Alternator- 3.73 Axle Ratio
- 4-Wheel Disc Brakes w/4-Wheel ABS, Front Vented Discs, Brake Assist and Hill Hold Control
- 50-State Emissions System
- 70-Amp/Hr Maintenance-Free Battery w/Run Down Protection
- Electric Power-Assist Steering- Engine: 3.5L PFDi V6 Flex-Fuel -inc: port injection
- Front Anti-Roll Bar- GVWR: 9,070 lbs- Rear-Wheel Drive- Single Stainless Steel Exhaust
- Solid Axle Rear Suspension w/Leaf Springs- Strut Front Suspension w/Coil Springs

Option Packages

Factory Installed Packages

ENGINE: 3.5L PFDI V6 FLEX-FUEL
-inc: port injection

13359 Miller Rd
Walker, LA 70785

© 2024 AutoRevo - All rights reserved. - Powered by AutoRevo