



# 2015 Jeep Wrangler Unlimited Altitude ~LEATHER~HARDTOP CONVETIBLE~BIG WHEELS

Contact Tim Pomp at 901-592-7492 for information or to schedule at test drive! 901-592-7492

## Our Price \$29,997

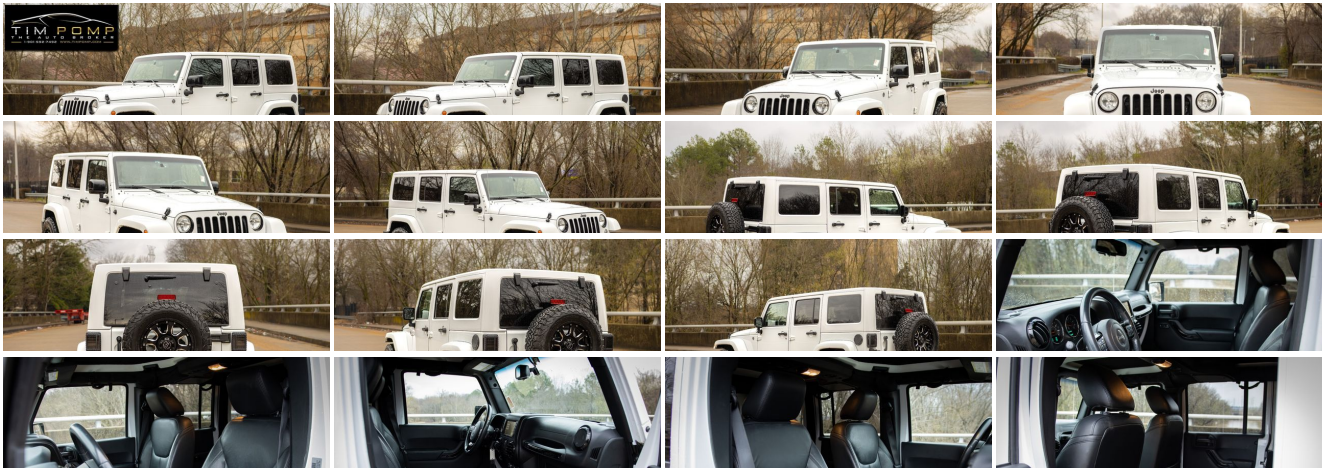
View this vehicle on our website at [mtmoriahautos.com](http://mtmoriahautos.com)

Mt. Moriah Auto Sales

901-592-7492

2571 MT MORIAH RD., Memphis, TN 38115

- Photos
- Details
- Contact





## Specifications:

<b>Year:</b>	2015
<b>VIN:</b>	1C4BJWEG9FL689011
<b>Make:</b>	Jeep
<b>Stock:</b>	TPP0166
<b>Model/Trim:</b>	Wrangler Unlimited Altitude ~LEATHER~HARDTOP CONVETIBLE~BIG WHEELS
<b>Condition:</b>	Pre-Owned
<b>Body:</b>	SUV
<b>Exterior:</b>	Bright White Clearcoat
<b>Engine:</b>	ENGINE: 3.6L V6 24V VVT
<b>Interior:</b>	Black Leather
<b>Transmission:</b>	TRANSMISSION: 5-SPEED AUTOMATIC (W5A580)
<b>Mileage:</b>	83,547
<b>Drivetrain:</b>	4 Wheel Drive
<b>Economy:</b>	City 16 / Highway 20

## Vehicle Description

This vehicle is part of Tim Pomp's inventory. Please see Tim Pomp or Reggie Abram only.

Call Tim Pomp @ ..//901...592....7492...// to schedule a test drive. We offer all types of Financing and Extended Warranties. Trades are welcome.

**Call Tim Pomp 901-592-7492.**

Visit our website at [www.TimPomp.com](http://www.TimPomp.com) or email [Dealertim@aol.com](mailto:Dealertim@aol.com) for more information.

### Installed Options

#### Interior

- 2 12V DC Power Outlets- 2 12V DC Power Outlets and 1 120V AC Power Outlet
- 2 Seatback Storage Pockets
- 4-Way Passenger Seat -inc: Manual Recline and Fore/Aft Movement
- 6-Way Driver Seat -inc: Manual Recline, Height Adjustment and Fore/Aft Movement
- 60-40 Folding Split-Bench Front Facing Fold Forward Seatback Rear Seat
- Analog Appearance- Carpet Floor Trim, Carpet And Rubber Mat- Compass
- Cruise Control w/Steering Wheel Controls- Day-Night Auto-Dimming Rearview Mirror
- Delayed Accessory Power- Driver And Passenger Visor Vanity Mirrors
- Fade-To-Off Interior Lighting- Front Center Armrest w/Storage- Front Cupholder
- Front Map Lights- Full Carpet Floor Covering -inc: Carpet Front And Rear Floor Mats
- Full Floor Console w/Locking Storage, 2 12V DC Power Outlets and 1 120V AC Power Outlet
- Gauges -inc: Speedometer, Odometer, Engine Coolant Temp, Tachometer, Trip Odometer and Trip Computer
- Heated Front Seats
- Instrument Panel Bin, Dashboard Storage, Driver And Passenger Door Bins
- Interior Trim -inc: Deluxe Sound Insulation- Leather Wrapped Steering Wheel
- Locking Cargo Area Connected Storage- Locking Glove Box

### Option Packages

#### Factory Installed Packages

ENGINE: 3.6L V6 24V VVT

TRANSMISSION: 5-SPEED AUTOMATIC (W5A580)

-inc: Tip Start, Hill Descent Control \$1,350

AIR CONDITIONING W/AUTO TEMP CONTROL

-inc: Humidity Sensor, Air Filtering \$395

BODY COLOR 3-PIECE HARD TOP

-inc: If ordering without AEM (Dual Top Group), the black soft top will not be included \$1,995

QUICK ORDER PACKAGE 24L ALTITUDE

-inc: Engine: 3.6L V6 24V VVT, Transmission: 5-Speed Automatic (W5A580), Black Jeep Grille Badge, Black Rear Bumper, MOPAR Black Tail

- Locking Cargo Area Concealed Storage- Locking Glove Box
- Manual Adjustable Front Head Restraints and Fixed Rear Head Restraints
- Manual Air Conditioning- Manual Tilt Steering Column- Outside Temp Gauge
- Perimeter Alarm- Power 1st Row Windows w/Driver And Passenger 1-Touch Down
- Power Door Locks w/Autolock Feature- Power Rear Windows- Rear Cupholder
- Remote Keyless Entry w/Integrated Key Transmitter, Illuminated Entry and Panic Button
- Sentry Key Immobilizer- Trip Computer

## Exterior

- Side Steps- Aluminum Spare Wheel- Auto On/Off Aero-Composite Halogen Headlamps
- Black Door Handles- Black Side Windows Trim- Body-Colored Fender Flares
- Clearcoat Paint- Conventional Rear Cargo Access
- Convertible w/Fixed Roll-Over Protection- Deep Tinted Glass
- Front Bumper w/2 Tow Hooks- Front Fog Lamps
- Full-Size Spare Tire Mounted Outside Rear- Fully Galvanized Steel Panels
- Power Heated Side Mirrors w/Manual Folding- Rear Bumper w/1 Tow Hook
- Sunrider Soft Top- Tailgate/Rear Door Lock Included w/Power Door Locks
- Tires: P255/70R18 OWL On/Off Road- Variable Intermittent Wipers
- Wheels: 18" x 7.5" 5-Spoke Gloss Black Aluminum

## Safety

- 2 12V DC Power Outlets- 2 12V DC Power Outlets and 1 120V AC Power Outlet
- 2 Seatback Storage Pockets
- 4-Way Passenger Seat -inc: Manual Recline and Fore/Aft Movement
- 6-Way Driver Seat -inc: Manual Recline, Height Adjustment and Fore/Aft Movement
- 60-40 Folding Split-Bench Front Facing Fold Forward Seatback Rear Seat
- Analog Appearance- Carpet Floor Trim, Carpet And Rubber Mat- Compass
- Cruise Control w/Steering Wheel Controls- Day-Night Auto-Dimming Rearview Mirror
- Delayed Accessory Power- Driver And Passenger Visor Vanity Mirrors
- Fade-To-Off Interior Lighting- Front Center Armrest w/Storage- Front Cupholder
- Front Map Lights- Full Carpet Floor Covering -inc: Carpet Front And Rear Floor Mats
- Full Floor Console w/Locking Storage, 2 12V DC Power Outlets and 1 120V AC Power Outlet
- Gauges -inc: Speedometer, Odometer, Engine Coolant Temp, Tachometer, Trip Odometer and Trip Computer
- Heated Front Seats
- Instrument Panel Bin, Dashboard Storage, Driver And Passenger Door Bins
- Interior Trim -inc: Deluxe Sound Insulation- Leather Wrapped Steering Wheel
- Locking Cargo Area Concealed Storage- Locking Glove Box
- Manual Adjustable Front Head Restraints and Fixed Rear Head Restraints
- Manual Air Conditioning- Manual Tilt Steering Column- Outside Temp Gauge
- Perimeter Alarm- Power 1st Row Windows w/Driver And Passenger 1-Touch Down
- Power Door Locks w/Autolock Feature- Power Rear Windows- Rear Cupholder
- Remote Keyless Entry w/Integrated Key Transmitter, Illuminated Entry and Panic Button
- Sentry Key Immobilizer- Trip Computer

## Mechanical

- Transmission: 6-Speed Manual (NSG370)- 160 Amp Alternator- 22.5 Gal. Fuel Tank
- 3.21 Rear Axle Ratio
- 4-Wheel Disc Brakes w/4-Wheel ABS, Front And Rear Vented Discs, Brake Assist and Hill Hold Control
- 50 State Emissions- 600CCA Maintenance-Free Battery- 880# Maximum Payload
- Auto Locking Hubs- Brake Actuated Limited Slip Differential- Engine Oil Cooler
- Engine: 3.6L V6 24V VVT- Front And Rear Anti-Roll Bars- GVWR: 5,500 lbs
- HD Shock Absorbers- Heavy Duty Suspension w/Gas Shocks
- Hydraulic Power-Assist Steering- Leading Link Front Suspension w/Coil Springs
- Manual Transfer Case- Part-Time Four-Wheel Drive- Single Stainless Steel Exhaust
- Solid Axle Rear Suspension w/Coil Springs
- Towing Equipment -inc: Trailer Sway Control

Gauge, Black Rear Bumper, High Gloss Black Tail Lamp Guards, Piano Black Interior Accents, Hood Power Bulge, Black Front Bumper, Low Gloss Black Wrangler Decal, High Gloss Black Center Wheel Caps, Chrome/Leather Wrapped Shift Knob, Jeep Wrangler Altitude Edition, Altitude Grille, Gloss Black Fascia Applique, MOPAR Rock Rails (DISC), Black Accent Stitching, Black/Chrome Screws Fuel Filler Door, Black High Gloss Exterior Mirror Cap

BRIGHT WHITE CLEARCOAT

BLACK, BLACK LEATHER SEATS W/ACCENT STITCH

Option Packages Total

\$7,340

\*Price does not include taxes, tags, title, license, registration, documentation fee of \$698.00 or other delivery charges.

Mt. Moriah Auto Sales

Mt. Moriah Auto Sales

View this car on our website at [mtmoriahautos.com/7178819](http://mtmoriahautos.com/7178819)

Website: [mtmoriahautos.com](http://mtmoriahautos.com)

Phone: [901-592-7492](tel:901-592-7492)

Map: [2571 MT MORIAH RD, Memphis, TN 38115](#)

