

# 2019 Mercedes-Benz AMG?? GT 63 S

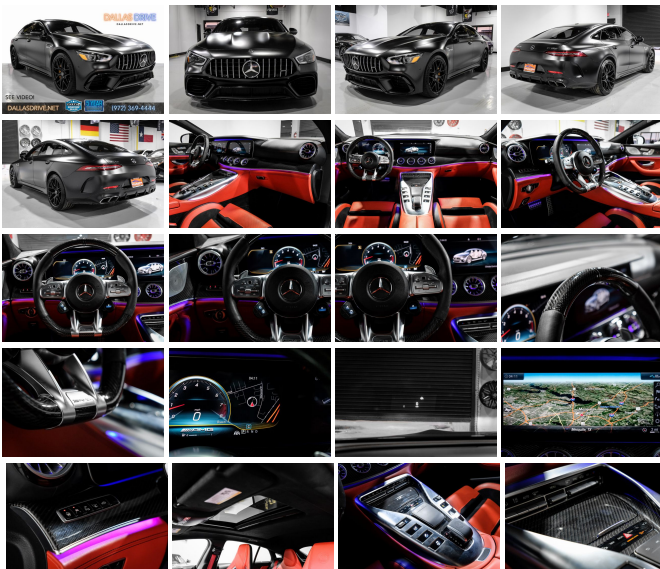
View this car on our website at [dallasdrive.net/7178800/ebrochure](http://dallasdrive.net/7178800/ebrochure)



Price **\$114,987**

## Specifications:

<b>Year:</b>	2019
<b>VIN:</b>	WDD7X8KB2KA007199
<b>Make:</b>	Mercedes-Benz
<b>Stock:</b>	007199
<b>Model/Trim:</b>	AMG?? GT 63 S
<b>Condition:</b>	Pre-Owned
<b>Body:</b>	Sedan
<b>Exterior:</b>	Obsidian Black Metallic
<b>Engine:</b>	Engine: 4.0L Handcrafted AMG V8 biturbo
<b>Interior:</b>	Red Pepper/Black Leather
<b>Mileage:</b>	34,371
<b>Economy:</b>	City 15 / Highway 20

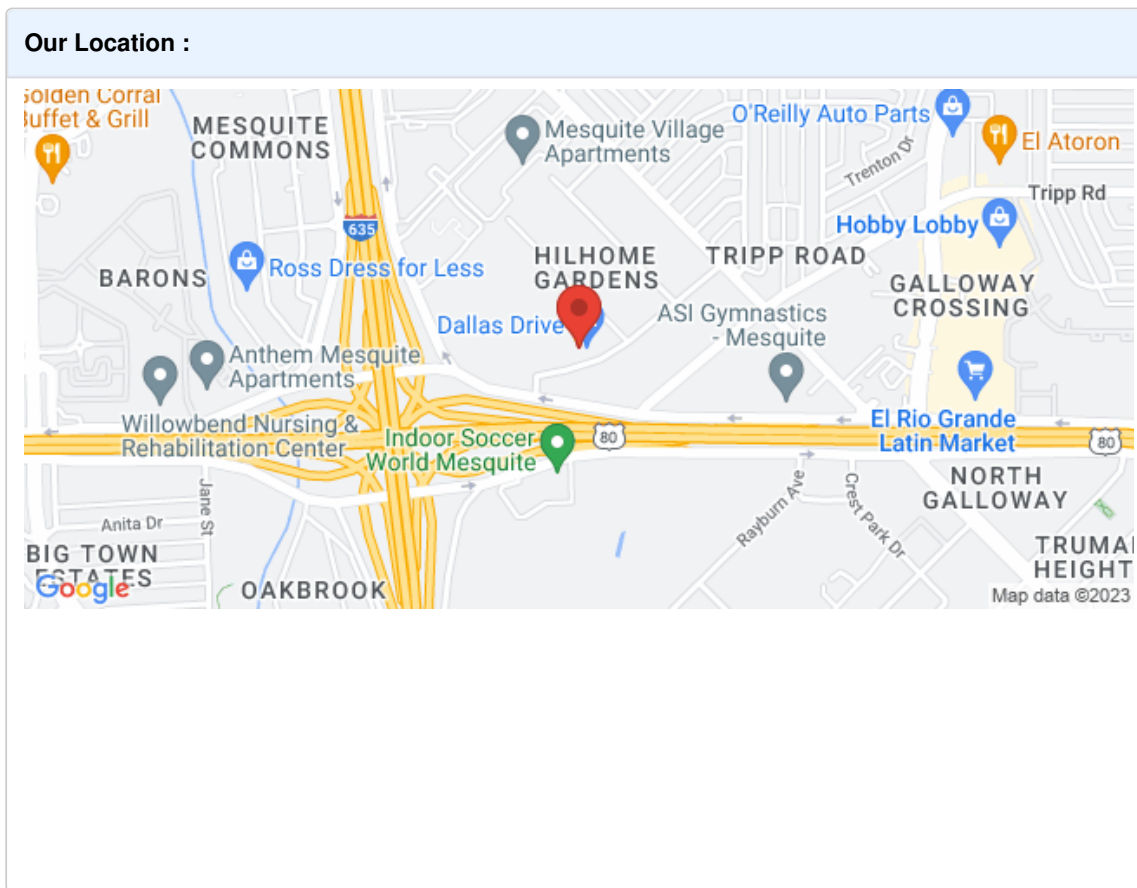


AMG Night Package (Local Component Code), AMG Night Package (P60) (Black Front Splitter, Exhaust Tips, Mirror Covers, Rear Diffuser Insert, Side Sill Inserts, and Window Trim), Driver Assistance Package (Traffic Sign Assist), Driver Assistance Package (23P) (Active Blind Spot Assist, Active Brake Assist w/Cross-Traffic Function, Active Distance Assist DISTRONIC??, Active Emergency Stop Assist, Active Lane Change Assist, Active Lane Keeping Assist, Active Speed Limit Assist, Active Steering Assist, Evasive Steering Assist, PRE-SAFE?? PLUS Rear-End Collision Protection, and Route-Based Speed Adaptation), Parking Assistance Package (Surround View Camera), Warmth & Comfort Package (Global Components Code, Heated Front Door Panels & Armrests, Heated Steering Wheel, and Rapid Heating Front Seats), 14 Speakers, 3-Zone Climate Control, 4-Wheel Disc Brakes, ABS brakes, Active Cruise Control, Adaptive suspension, Air Conditioning, Alloy wheels, AM/FM radio: SiriusXM, AMG Carbon Fiber Engine Cover, AMG Performance DINAMICA/Carbon Fiber Steering Whl, Apple CarPlay, Auto High-beam Headlights, Auto tilt-away steering wheel, Auto-dimming door mirrors, Auto-dimming Rear-View mirror, Auto-leveling suspension, Automatic temperature control, Brake assist, Bumpers: body-color, Burmester High-End 3D Surround Sound System, Burmester Surround Sound System, Ceramic Composite Braking System, Child-Seat-Sensing Airbag, Compass, Delay-off headlights, designo?? Black DINAMICA Headliner, Driver door bin, Driver vanity mirror, Dual front impact airbags, Dual front side impact airbags, Electronic Stability Control, Emergency communication system: eCall Emergency System, Exterior Parking Camera Rear, Four wheel independent suspension, Front anti-roll bar, Front Bucket Seats, Front Center Armrest, Front dual zone A/C, Front reading lights, Fully automatic headlights, Garage door transmitter, Head restraints memory, Heated door mirrors, Heated Front Seats, Heated front seats, Heated Windshield, Illuminated entry, Knee airbag, Low tire pressure warning, Memory seat, Navigation system: COMAND, Occupant sensing airbag, Outside temperature display, Overhead airbag, Overhead console,

Panic alarm, Passenger door bin, Passenger vanity mirror, Perforated Nappa Leather Upholstery, Power adjustable front head restraints, Power door mirrors, Power driver seat, Power Liftgate, Power moonroof, Power passenger seat, Power steering, Power windows, Premium audio system: COMAND, Radio data system, Radio: AM/FM w/COMAND Navigation, Rain sensing wipers, Rear anti-roll bar, Rear reading lights, Rear Side Air Bags, Rear Window Blind, Rear window defroster, Red Seatbelts, Remote keyless entry, Security system, Speed control, Speed-sensing steering, Speed-Sensitive Wipers, Spoiler, Sport steering wheel, Steering wheel memory, Steering wheel mounted audio controls, Tachometer, Telescoping steering wheel, Tilt steering wheel, Traction control, Trip computer, Turn signal indicator mirrors, Variably intermittent wipers, Ventilated Front Bucket Seats, Ventilated front seats, Wheels: 20" AMG Twin 5-Spoke w/Grey Accents, and Wheels: 21" Black AMG Forged Cross-Spoke. 2019 Mercedes-Benz AMG?? GT 63 S 4MATIC?? 4MATIC?? 9-Speed Automatic V8 Black

2019 Mercedes-Benz AMG?? GT 63 S

Dallas Drive - (972) 369-4444 - View this car on our website at [dallasdrive.net/7178800/ebrochure](http://dallasdrive.net/7178800/ebrochure)



2019 Mercedes-Benz AMG?? GT 63 S

Dallas Drive - (972) 369-4444 - View this car on our website at [dallasdrive.net/7178800/ebrochure](http://dallasdrive.net/7178800/ebrochure)

**Installed Options**

**Interior**

- Ventilated Front Bucket Seats -inc: Fully electric, 12-way power front seats, 4-way power lumbar support and memory function
- Heated Front Seats- Driver Seat- Passenger Seat- Bucket Front Facing Rear Seat
- Power Tilt/Telescoping Steering Column
- Gauges -inc: Speedometer, Odometer, Engine Coolant Temp, Tachometer, Turbo/Supercharger Boost, Trip Odometer and Trip Computer
- Power Rear Windows- Mobile Hotspot Internet Access
- AMG Sport DINAMICA Simulated Suede/Metal-Look Steering Wheel w/Auto Tilt-Away
- Front Cupholder- Rear Cupholder- Compass- Valet Function

- Front Cupholder- Rear Cupholder- Compass- Valet Function
- Power Fuel Flap Locking Type- Proximity Key For Doors And Push Button Start
- Remote Keyless Entry w/Integrated Key Transmitter, 4 Door Curb/Courtesy, Illuminated Entry, Illuminated Ignition Switch and Panic Button
- Remote Releases -Inc: Hands-Free Access Proximity Cargo Access
- Garage Door Transmitter- Cruise Control w/Steering Wheel Controls
- Dual Zone Front Automatic Air Conditioning
- HVAC -inc: Underseat Ducts and Console Ducts - Illuminated Locking Glove Box
- Driver Foot Rest- Full DINAMICA Simulated Suede Headliner
- Interior Trim -inc: Metal-Look Interior Accents and MB-TEX Leatherette Upholstered Dashboard
- Leatherette Door Trim Insert- Leather/Metal-Look Gear Shifter Material
- Perforated Nappa Leather Upholstery- Day-Night Auto-Dimming Rearview Mirror
- Driver And Passenger Visor Vanity Mirrors w/Driver And Passenger Illumination, Driver And Passenger Auxiliary Mirror
- Full Floor Console w/Covered Storage, Mini Overhead Console w/Storage, Rear Console w/Storage and 3 12V DC Power Outlets
- Fade-To-Off Interior Lighting- Front And Rear Map Lights- Carpet Floor Trim
- Full Carpet Floor Covering -inc: Carpet Front And Rear Floor Mats
- Trunk/Hatch Auto-Latch- Cargo Area Concealed Storage- Rigid Cargo Cover
- Cargo Space Lights- Tracker System
- Memory Settings -inc: Door Mirrors, Steering Wheel and Head Restraints
- FOB Controls -inc: Cargo Access, Windows and Sunroof/Convertible Roof
- Smart Device Remote Engine Start- Driver / Passenger And Rear Door Bins
- Delayed Accessory Power- Power Door Locks w/Autolock Feature
- Power 1st Row Windows w/Front And Rear 1-Touch Up/Down - Systems Monitor
- Redundant Digital Speedometer- Trip Computer- Outside Temp Gauge
- Digital/Analog Appearance- Front Center Armrest- Seats w/Leatherette Back Material
- Power w/Tilt Front Head Restraints and Fixed Rear Head Restraints
- 2 Seatback Storage Pockets- Perimeter Alarm- Immobilizer- Air Filtration
- 3 12V DC Power Outlets

---

## Exterior

- Wheels: 20" AMG Twin 5-Spoke w/Grey Accents- Tires: 265/40ZR20 Fr & 295/35ZR20 Rr
- High-Performance Summer Tires- Clearcoat Paint
- Express Open/Close Sliding And Tilting Glass 1st Row Sunroof w/Sunshade
- Body-Colored Front Bumper
- Body-Colored Rear Bumper w/Black Rub Strip/Fascia Accent
- Chrome Side Windows Trim and Black Front Windshield Trim
- Body-Colored Door Handles
- Body-Colored Power w/Tilt Down Heated Side Mirrors w/Driver Auto Dimming, Power Folding and Turn Signal Indicator
- Fixed Rear Window w/Defroster and Manual Blind- Light Tinted Glass
- Speed Sensitive Rain Detecting Variable Intermittent Wipers w/Heated Jets And Reservoir
- Galvanized Steel/Aluminum Panels- Power Spoiler- Chrome Grille
- Power Liftgate Rear Cargo Access
- Tailgate/Rear Door Lock Included w/Power Door Locks- Cornering Lights
- Perimeter/Approach Lights- LED Brakelights- Headlights-Automatic Highbeams
- Auto On/Off Projector Beam Led Low/High Beam Daytime Running Auto High-Beam Headlamps w/Delay-Off

---

## Safety

- Ventilated Front Bucket Seats -inc: Fully electric, 12-way power front seats, 4-way power lumbar support and memory function
- Heated Front Seats- Driver Seat- Passenger Seat- Bucket Front Facing Rear Seat
- Power Tilt/Telescoping Steering Column
- Gauges -inc: Speedometer, Odometer, Engine Coolant Temp, Tachometer, Turbo/Supercharger Boost, Trip Odometer and Trip Computer
- Power Rear Windows- Mobile Hotspot Internet Access
- AMG Sport DINAMICA Simulated Suede/Metal-Look Steering Wheel w/Auto Tilt-Away
- Front Cupholder- Rear Cupholder- Compass- Valet Function
- Power Fuel Flap Locking Type- Proximity Key For Doors And Push Button Start
- Remote Keyless Entry w/Integrated Key Transmitter, 4 Door Curb/Courtesy, Illuminated Entry, Illuminated Ignition Switch and Panic Button
- Remote Releases -Inc: Hands-Free Access Proximity Cargo Access
- Garage Door Transmitter- Cruise Control w/Steering Wheel Controls
- Dual Zone Front Automatic Air Conditioning
- HVAC -inc: Underseat Ducts and Console Ducts - Illuminated Locking Glove Box
- Driver Foot Rest- Full DINAMICA Simulated Suede Headliner
- Interior Trim -inc: Metal-Look Interior Accents and MB-TEX Leatherette Upholstered Dashboard
- Leatherette Door Trim Insert- Leather/Metal-Look Gear Shifter Material
- Perforated Nappa Leather Upholstery- Day-Night Auto-Dimming Rearview Mirror

- Driver And Passenger Visor Vanity Mirrors w/Driver And Passenger Illumination, Driver And Passenger Auxiliary Mirror
- Full Floor Console w/Covered Storage, Mini Overhead Console w/Storage, Rear Console w/Storage and 3 12V DC Power Outlets
- Fade-To-Off Interior Lighting- Front And Rear Map Lights- Carpet Floor Trim
- Full Carpet Floor Covering -inc: Carpet Front And Rear Floor Mats
- Trunk/Hatch Auto-Latch- Cargo Area Concealed Storage- Rigid Cargo Cover
- Cargo Space Lights- Tracker System
- Memory Settings -inc: Door Mirrors, Steering Wheel and Head Restraints
- FOB Controls -inc: Cargo Access, Windows and Sunroof/Convertible Roof
- Smart Device Remote Engine Start- Driver / Passenger And Rear Door Bins
- Delayed Accessory Power- Power Door Locks w/Autolock Feature
- Power 1st Row Windows w/Front And Rear 1-Touch Up/Down - Systems Monitor
- Redundant Digital Speedometer- Trip Computer- Outside Temp Gauge
- Digital/Analog Appearance- Front Center Armrest- Seats w/Leatherette Back Material
- Power w/Tilt Front Head Restraints and Fixed Rear Head Restraints
- 2 Seatback Storage Pockets- Perimeter Alarm- Immobilizer- Air Filtration
- 3 12V DC Power Outlets

---

## Mechanical

- Engine: 4.0L Handcrafted AMG V8 biturbo
- Transmission: 9-Speed AMG SPEEDSHIFT MCT- Engine Auto Stop-Start Feature
- Transmission w/Driver Selectable Mode- Full-Time All-Wheel- 3.27 Axle Ratio
- Battery w/Run Down Protection- Gas-Pressurized Shock Absorbers
- Front And Rear Anti-Roll Bars- Rear Auto-Leveling Suspension
- Automatic w/Driver Control Height Adjustable Automatic w/Driver Control Ride Control Sport Tuned Adaptive Suspension
- Electric Power-Assist Speed-Sensing Steering- 17.4 Gal. Fuel Tank
- Dual Stainless Steel Exhaust w/Chrome Tailpipe Finisher
- Multi-Link Front Suspension w/Air Springs- Multi-Link Rear Suspension w/Air Springs
- 4-Wheel Disc Brakes w/4-Wheel ABS, Front And Rear Vented Discs, Brake Assist, Hill Hold Control and Electric Parking Brake
- Electro-Mechanical Limited Slip Differential

---

Dallas Drive

[dallasdrive.net](http://dallasdrive.net)

(972) 369-4444

1525 Mariposa Drive

Mesquite, TX 75150

© 2023 AutoRevo - All rights reserved. - Powered by AutoRevo