



2011 Chevrolet Silverado 1500 LS

Our Price \$13,589

View this vehicle on our website at taautoonline.com

TA Auto Sales LLC

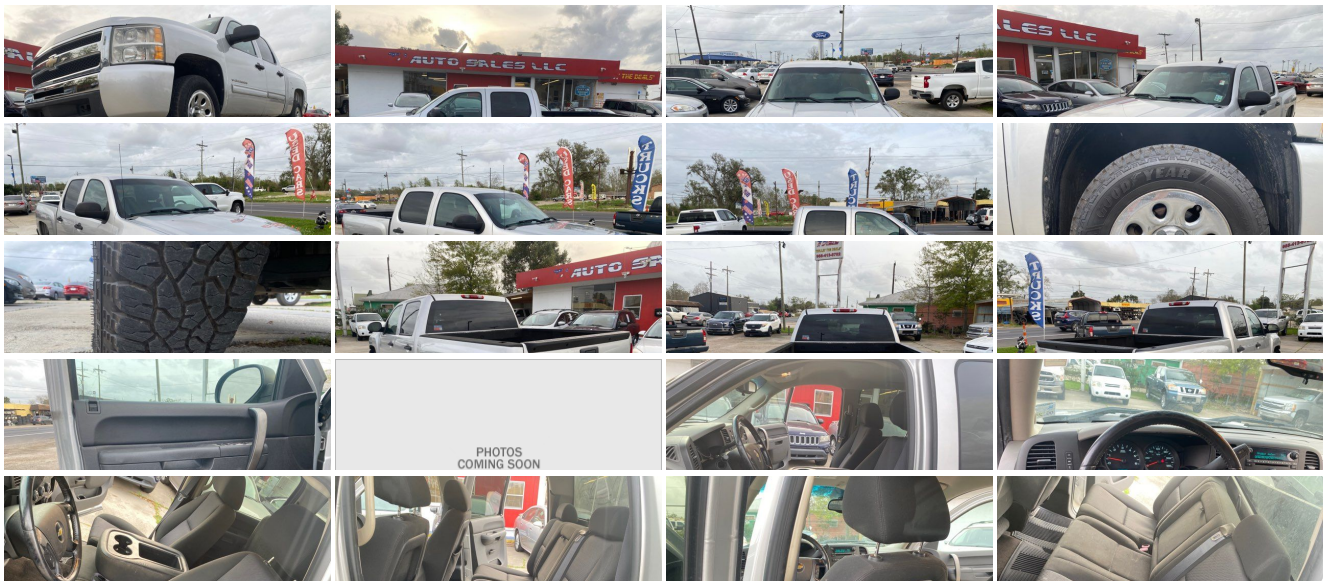
[985-413-8702](tel:985-413-8702)

292 W Main St, Thibodaux, LA 70301

[Photos](#)

[Details](#)

[Contact](#)



Specifications:

Year:	2011
VIN:	3GCPCREA9BG105808
Make:	Chevrolet
Stock:	TA530
Model/Trim:	Silverado 1500 LS
Condition:	Pre-Owned
Body:	Pickup Truck
Exterior:	Sheer Silver Metallic
Engine:	ENGINE, VORTEC 4.8L VARIABLE VALVE TIMING V8 SFI FLEXFUEL
Interior:	Dark Titanium Cloth
Transmission:	TRANSMISSION, 4-SPEED AUTOMATIC, ELECTRONICALLY CONTROLLED
Mileage:	138,533
Drivetrain:	Rear Wheel Drive
Economy:	City 14 / Highway 19

Vehicle Description

Installed Options

Interior

- Door locks, power includes Remote Keyless Entry
- Floor covering, color-keyed carpeting with rubberized vinyl floor mats (Extended and Crew Cab models also include rear floor mats) (May be substituted with (BG9) Black rubberized vinyl floor covering.)
- Remote Keyless Entry with 2 transmitters, panic button and content theft alarm
- Air conditioning, single-zone manual front climate control
- Assist handle, front passenger (Also includes rear assist handles in the headliner on Extended and Crew Cab Models.)
- Coat hooks, rear driver and passenger side
- Cruise control, electronic with set and resume speed, located on steering wheel
- Cup holders, front (Also includes rear cupholders on Extended and Crew Cab models.)
- Driver Information Center with odometer, trip odometer and message center (monitors numerous systems depending on vehicle equipment level including low fuel, turn signal "on", transmission temperature and oil change notification) (Driver Information Center controls are operated through the trip odometer button unless (UK3) steering wheel mounted audio controls is ordered. On 1LT, 1SF and 1LZ, includes 8-point compass and outside temperature.)
- Instrumentation, analog with speedometer, odometer, fuel level, engine temperature, and tachometer
- Lighting, interior with dome and reading lights, illuminated entry feature and backlit instrument panel switches
- Mirror, inside rearview manual day/night
- Power outlets, 2 auxiliary instrument panel-mounted with covers, 12-volt
- Seat Trim, Cloth- Seat adjuster, manual lumbar control on the driver-side
- Seat, rear 60/40 folding bench (folds up), 3-passenger, folding (includes child seat top tether anchor) (Requires Crew Cab models.)
- Seats, front 40/20/40 split-bench, 3-passenger, driver and front passenger manual reclining with outboard head restraints and center fold-down armrest with storage
- Steering column, Tilt-Wheel, adjustable with brake/transmission shift interlock
- Steering wheel, includes theft-deterrent locking feature
- Visors, driver and front passenger, sliding, with clip and passenger side vanity mirror with cover, Opal Gray-colored
- Warning tones headlamp on, key-in-ignition, driver and passenger buckle up reminder and turn signal on
- Windows, power with driver Express-Down

Exterior

- Headlamps, dual halogen composite with automatic exterior lamp control and flash-to-pass feature
- Air dam, Black- Bumper, front chrome (Includes body-color bumper end caps.)
- Bumper, rear chrome, step-style with pad- Door handles, Black
- Glass, Solar-Ray deep-tinted (all windows except light-tinted glass on windshield and

Option Packages

Factory Installed Packages

ENGINE, VORTEC 4.8L VARIABLE VALVE TIMING V8 SFI FLEXFUEL

capable of running on unleaded or up to 85% ethanol (302 hp [225.2 kW] @ 5600 rpm, 305 lb-ft torque [411.8 N-m] @ 4600 rpm), iron block

TRANSMISSION, 4-SPEED AUTOMATIC, ELECTRONICALLY CONTROLLED

with overdrive and tow/haul mode

REAR AXLE, 3.23 RATIO

SHEER SILVER METALLIC

PAINT, SOLID

LS PREFERRED EQUIPMENT GROUP
includes standard equipment

AUDIO SYSTEM, AM/FM STEREO WITH MP3 COMPATIBLE CD PLAYER

seek-and-scan, digital clock, auto-tone control, Radio Data System (RDS), speed-compensated volume and TheftLock

DARK TITANIUM, CLOTH SEAT TRIM

SEATS, FRONT 40/20/40 SPLIT-BENCH, 3-PASSENGER, DRIVER AND FRONT PASSENGER MANUAL RECLINING
with outboard head restraints and center fold-down armrest with storage

- driver- and front passenger-side glass) (With Regular Cab models, includes rear window. With Extended Cab models, includes rear and rear quarter windows. With Crew Cab models or (C49) rear-window defogger, includes light-tinted rear window.)
- Grille, chrome surround (Not included when (VAT) Chrome grille, LPO or (VAS) Body-color grille, LPO are ordered.)
- Lamps, dual cargo area lamps
- Mirrors, outside heated power-adjustable, Black, manual-folding
- Moldings, bodyside, body-colored (Moldings are deleted if any SEO paint is ordered.)
- Pickup box, Fleetside
- Tire carrier, outside spare, winch-type mounted under frame at rear
- Tires, P245/70R17 all-season, blackwall includes a blackwall spare tire (Requires 2WD models.)
- Wheel, 17" (43.2 cm) steel spare (spare wheel will not cosmetically match the other 4 wheels)
- Wheels, 4-17" x 7.5" (43.2 cm x 19.1 cm) 6-lug chrome-styled steel includes chrome center caps (spare wheel will not cosmetically match the other 4 wheels)
- Wipers, front intermittent wet-arm with pulse washers

Safety

- Door locks, power includes Remote Keyless Entry
- Floor covering, color-keyed carpeting with rubberized vinyl floor mats (Extended and Crew Cab models also include rear floor mats) (May be substituted with (BG9) Black rubberized vinyl floor covering.)
- Remote Keyless Entry with 2 transmitters, panic button and content theft alarm
- Air conditioning, single-zone manual front climate control
- Assist handle, front passenger (Also includes rear assist handles in the headliner on Extended and Crew Cab Models.)
- Coat hooks, rear driver and passenger side
- Cruise control, electronic with set and resume speed, located on steering wheel
- Cup holders, front (Also includes rear cupholders on Extended and Crew Cab models.)
- Driver Information Center with odometer, trip odometer and message center (monitors numerous systems depending on vehicle equipment level including low fuel, turn signal "on", transmission temperature and oil change notification) (Driver Information Center controls are operated through the trip odometer button unless (UK3) steering wheel mounted audio controls is ordered. On 1LT, 1SF and 1LZ, includes 8-point compass and outside temperature.)
- Instrumentation, analog with speedometer, odometer, fuel level, engine temperature, and tachometer
- Lighting, interior with dome and reading lights, illuminated entry feature and backlit instrument panel switches
- Mirror, inside rearview manual day/night
- Power outlets, 2 auxiliary instrument panel-mounted with covers, 12-volt
- Seat Trim, Cloth- Seat adjuster, manual lumbar control on the driver-side
- Seat, rear 60/40 folding bench (folds up), 3-passenger, folding (includes child seat top tether anchor) (Requires Crew Cab models.)
- Seats, front 40/20/40 split-bench, 3-passenger, driver and front passenger manual reclining with outboard head restraints and center fold-down armrest with storage
- Steering column, Tilt-Wheel, adjustable with brake/transmission shift interlock
- Steering wheel, includes theft-deterrent locking feature
- Visors, driver and front passenger, sliding, with clip and passenger side vanity mirror with cover, Opal Gray-colored
- Warning tones headlamp on, key-in-ignition, driver and passenger buckle up reminder and turn signal on
- Windows, power with driver Express-Down

Mechanical

- Alternator, 145 amps
- Battery, heavy-duty 600 cold-cranking amps, maintenance-free with rundown protection and retained accessory power
- Brakes, 4-wheel antilock, front disc/rear drum
- Engine, Vortec 4.8L Variable Valve Timing V8 SFI FlexFuel capable of running on unleaded or up to 85% ethanol (302 hp [225.2 kW] @ 5600 rpm, 305 lb-ft torque [411.8 N-m] @ 4600 rpm), iron block
- Exhaust, aluminized stainless-steel muffler and tailpipe
- Frame, fully-boxed, hydroformed front section
- GVWR, 6800 lbs. (3084 kg) (Requires CC10753 or CC10543 models.)
- Rear axle, 3.23 ratio (Refer to Engine/Axle chart for availability.) - Rear wheel drive
- Steering, power, rack-and-pinion
- Suspension Package, Solid Smooth Ride includes 35 mm piston twin tube shocks and 36mm front stabilizer bar (Requires Crew Cab models.)
- Suspension, front independent, coil over shock
- Suspension, rear 2-stage multi-leaf springs, semi-elliptic
- Transmission, 4-speed automatic, electronically controlled with overdrive and tow/haul mode (On Crew Cab models, requires (L20) Vortec 4.8L V8 SFI Flex-Fuel engine. Not available on C*10953 models.)

TA Auto Sales LLC

TA Auto Sales LLC

View this car on our website at taautoonline.com/7177595

Website: taautoonline.com

Phone: [985-413-8702](tel:985-413-8702)

Map: [292 W Main St, Thibodaux, LA 70301](#)

