

2008 GMC Sierra 2500HD Utility 4x4 Work Truck

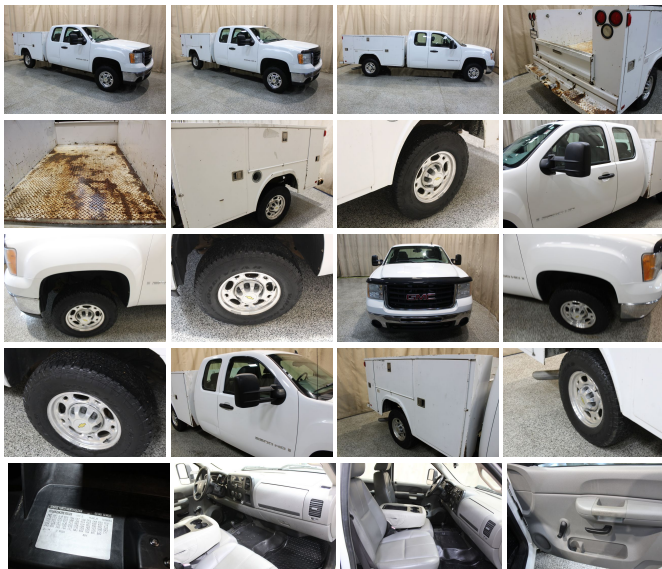
View this car on our website at autolandoutlets.com/7177326/ebrochure



Our Price **\$28,447**

Specifications:

Year:	2008
VIN:	1GTHK29K28E165026
Make:	GMC
Stock:	11356
Model/Trim:	Sierra 2500HD Utility 4x4 Work Truck
Condition:	Pre-Owned
Body:	Pickup Truck
Exterior:	Summit White
Engine:	ENGINE, VORTEC 6.0L VARIABLE VALVE TIMING V8 SFI
Interior:	Gray Vinyl
Transmission:	TRANSMISSION, 6-SPEED AUTOMATIC, HEAVY-DUTY, ELECTRONICALLY CONTROLLED
Mileage:	116,595
Drivetrain:	4 Wheel Drive



Just arrived!! Vehicle has been detailed and inspected runs and drives great!! Autoland Outlets is proud to offer this 2008 Gmc Sierra 2500 Extended Cab 4x4 Utility Box options include 3.73 rear ratio, Vinyl Seats,HD Trailering Equipment,6.0L Engine. Call Autoland

Outlets at 1-815-525-5000

Many of our trucks are Rust Free Southern Units!!! We Buy-Sell-Trade call us for Availability and Pricing 815-525-5000. Dealer Shall in no way be held liable for any errors or omissions to be found on these webpages. All prices are plus any applicable state taxes and service fees. We will do our best to keep all the information current and accurate, however the dealership should be contacted for final pricing and availability. Autoland Outlets is the midwest Premier Truck Store. Over 250 Trucks in Stock!! Over 150 are Diesels! 3/4 Tons, 1 Tons, Regular, Extended and Crew Cabs. Plus: Dump Trucks, Utility Trucks, and much more! Many New Trucks Arriving Daily!!! Thousands of Satisfied Customers! Over 25 Years in Business. Updated Daily 888-240-8674 ILLINOIS WARRANTY MAY APPLY CALL DEALERSHIP

FOR DETAILS

2008 GMC Sierra 2500HD Utility 4x4 Work Truck

Autoland Outlets - 877-319-6060 - View this car on our website at autolandoutlets.com/7177326/ebrochure

Our Location :



2008 GMC Sierra 2500HD Utility 4x4 Work Truck

Autoland Outlets - 877-319-6060 - View this car on our website at autolandoutlets.com/7177326/ebrochure

Installed Options

Interior

- Power outlets, 2 auxiliary instrument panel-mounted with covers, 12-volt
- Tire Pressure Monitoring System (does not apply to spare tire)
- Air conditioning, single-zone manual front climate control (Standard on Extended and Crew Cab models)
- Assist handle, front passenger (Also includes rear assist handles in the headliner on Extended and Crew Cab models)

Option Packages

Factory Installed Packages

ENGINE, VORTEC 6.0L VARIABLE VALVE TIMING V8 SFI
(353 hp [262.8 kW] @ 5400 rpm, 373 lb-ft of
torque [505.6 N-m] @ 4400 rpm)

TRANSMISSION. 6-SPEED AUTOMATIC. HEAVY-DUTY.

- Coat hooks, rear driver and passenger side
- Cup holders, front (Also includes rear cupholders on Extended and Crew Cab models)
- Dark Titanium, Vinyl seat trim (Vinyl seats require (BG9) Graphite-colored rubberized vinyl floor covering)
- Driver Information Center with odometer, trip odometer and message center (monitors numerous systems depending on vehicle equipment level including low fuel, turn signal "on", transmission temperature and oil change notification) (Driver Information Center controls are operated through the trip button unless (UK3) steering wheel mounted audio controls is ordered)
- Floor covering, Black rubberized vinyl
- Headliner, Opal Gray-colored cloth with matching retainer moldings
- Instrumentation, analog with speedometer, fuel level, engine temperature, tachometer, voltmeter and oil pressure indicators
- Lighting, interior with dome and reading lights, illuminated entry feature and backlit instrument panel switches
- Mirror, inside rearview manual day/night
- Seat, rear bench (folds up), full width, folding, 3-passenger (includes child seat top tether anchor) (Standard with Extended Cab models only)
- Seats, front 40/20/40 split-bench, 3-passenger, driver and front passenger manual reclining with outboard head restraints and center fold-down armrest with storage
- Steering column, Tilt-Wheel, adjustable with brake/transmission shift interlock
- Steering wheel, includes theft-deterrent locking feature
- Visors, driver and front passenger, sliding with clip and passenger side vanity mirror with cover, Opal Gray-colored
- Warning tones, headlamp on, key-in-ignition, driver and passenger buckle up reminder and turn signal on
- Windows, fixed, rear access door (Standard with Extended Cab models only)

Exterior

- Daytime Running Lamps, with automatic exterior lamp control
- Headlamps, dual halogen composite with automatic exterior lamp control and flash-to-pass feature
- Tires, LT245/75R16E all-season, blackwall (Not available with (PDL) Z71 Off-Road Package. Includes 5 tires with (E63) Wideside pickup box. Includes 4 tires with (ZW9) pickup box delete.)
- Wheels, 16" x 6.5" (40.6 cm x 16.5 cm) 8-lug painted steel, includes painted center caps and steel spare (spare wheel will not cosmetically match the other 4 wheels) Spare not included with (ZW9) pickup box delete unless a spare tire is ordered
- Air dam, Black- Bumper, front chrome (Includes Black bumper top caps)
- Bumper, rear chrome, step-style with pad (Requires RPO (E63) wideside pickup box)
- Glass, Solar-Ray light-tinted, all windows- Grille, chrome surround
- Lamps, dual cargo area lamps- Mirrors, outside manual, Black, manual-folding
- Tailgate protection, top of tailgate protection cap
- Tire carrier, outside spare, winch-type mounted under frame at rear (Orders with (ZW9) Pickup box delete will not include a Spare Tire Carrier unless a spare tire is ordered.)
- Wipers, front intermittent wet-arm with pulse washers

Safety

- Power outlets, 2 auxiliary instrument panel-mounted with covers, 12-volt
- Tire Pressure Monitoring System (does not apply to spare tire)
- Air conditioning, single-zone manual front climate control (Standard on Extended and Crew Cab models)
- Assist handle, front passenger (Also includes rear assist handles in the headliner on Extended and Crew Cab models)
- Coat hooks, rear driver and passenger side
- Cup holders, front (Also includes rear cupholders on Extended and Crew Cab models)
- Dark Titanium, Vinyl seat trim (Vinyl seats require (BG9) Graphite-colored rubberized vinyl floor covering)
- Driver Information Center with odometer, trip odometer and message center (monitors numerous systems depending on vehicle equipment level including low fuel, turn signal "on", transmission temperature and oil change notification) (Driver Information Center controls are operated through the trip button unless (UK3) steering wheel mounted audio controls is ordered)
- Floor covering, Black rubberized vinyl
- Headliner, Opal Gray-colored cloth with matching retainer moldings
- Instrumentation, analog with speedometer, fuel level, engine temperature, tachometer, voltmeter and oil pressure indicators
- Lighting, interior with dome and reading lights, illuminated entry feature and backlit instrument panel switches
- Mirror, inside rearview manual day/night
- Seat, rear bench (folds up), full width, folding, 3-passenger (includes child seat top tether anchor) (Standard with Extended Cab models only)
- Seats, front 40/20/40 split-bench, 3-passenger, driver and front passenger manual reclining with outboard head restraints and center fold-down armrest with storage
- Steering column, Tilt-Wheel, adjustable with brake/transmission shift interlock
- Steering wheel, includes theft-deterrent locking feature
- Visors, driver and front passenger, sliding with clip and passenger side vanity mirror with

ELECTRONICALLY CONTROLLED

with overdrive and tow/haul mode

TRAILERING EQUIPMENT, HEAVY-DUTY

includes trailering hitch platform and 2.5-inch receiver with 2" adapter, 7-wire harness (harness includes wires for: park lamps, backup lamps, right turn, left turn, electric brake lead, battery and ground) with independent fused trailering circuits mated to a 7-way sealed connector, wiring harness for after-market trailer brake controller (located in the instrument panel harness), and single wire for center high-mounted stop lamp

\$230

REAR AXLE, 3.73 RATIO

DIFFERENTIAL, HEAVY-DUTY AUTOMATIC LOCKING REAR

\$325

SUMMIT WHITE

PAINT, SOLID

WORK TRUCK PREFERRED EQUIPMENT GROUP

includes standard equipment

AUDIO SYSTEM, AM/FM STEREO WITH MP3 COMPATIBLE CD PLAYER

seek-and-scan, digital clock, auto-tone control, Radio Data System (RDS), speed-compensated volume and TheftLock

DARK TITANIUM, VINYL SEAT TRIM

SEATS, FRONT 40/20/40 SPLIT-BENCH, 3-PASSENGER, DRIVER AND FRONT PASSENGER MANUAL RECLINING

with outboard head restraints and center fold-down armrest with storage

Option Packages Total

\$555

cover, Opal Gray-colored

- Warning tones, headlamp on, key-in-ignition, driver and passenger buckle up reminder and turn signal on
- Windows, fixed, rear access door (Standard with Extended Cab models only)

Mechanical

- Air cleaner, high-capacity- Alternator, 125 amps
- Battery, heavy-duty 600 cold-cranking amps, maintenance-free with rundown protection and retained accessory power
- Cooling, auxiliary external transmission oil cooler, heavy-duty air-to-oil
- Cooling, external engine oil cooler, heavy-duty air-to-oil, integral to driver side of radiator tank
- Engine, Vortec 6.0L Variable Valve Timing V8 SFI (353 hp [262.8 kW] @ 5400 rpm, 373 lb-ft of torque [505.6 N-m] @ 4400 rpm)
- Exhaust, aluminized stainless-steel muffler and tailpipe- Four wheel drive
- Frame, hydroformed- GVWR, 9200 lbs. (4173 kg)- Pickup box, Wideside
- Rear axle, 3.73 ratio- Recovery hooks, front, frame-mounted
- Steering, power, recirculating ball
- Suspension Package, Handling/Trailer, heavy-duty, includes 35mm twin tube shock absorbers and 36mm front stabilizer bar
- Suspension, front independent, torsion bar
- Suspension, rear 2-stage multi-leaf springs, semi-elliptic
- Transfer case, with floor-mounted shifter (Requires 4WD models)
- Transmission, 6-speed automatic, heavy-duty, electronically controlled with overdrive and tow/haul mode (Requires (LY6) Vortec 6.0L V8 SFI engine)

Autoland Outlets

autolandoutlets.com

877-319-6060

13156 Love Rd

Roscoe, IL 61073

© 2024 AutoRevo - All rights reserved. - Powered by AutoRevo