

2015 Jeep Wrangler Unlimited X

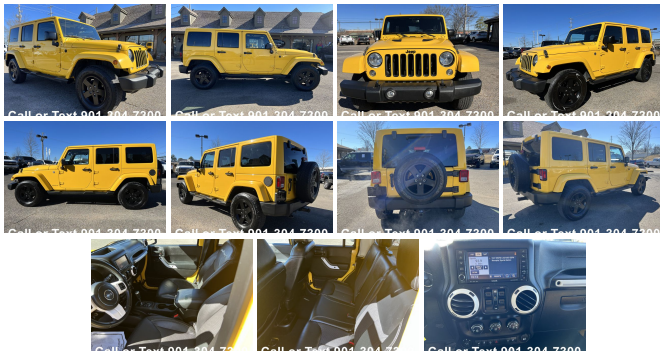
View this car on our website at colliervilleautocenter.com/7177277/ebrochure



Our Price **\$24,999**

Specifications:

Year:	2015
VIN:	1C4BJWEG6FL644706
Make:	Jeep
Stock:	4293
Model/Trim:	Wrangler Unlimited X
Condition:	Pre-Owned
Body:	SUV
Exterior:	Baja Yellow Clearcoat
Engine:	ENGINE: 3.6L V6 24V VVT
Interior:	Black
Mileage:	101,335
Drivetrain:	4 Wheel Drive
Economy:	City 16 / Highway 20



Memphis Truck Center @ Collierville Auto Sales offers the best selections of used cars and trucks in the Mid South, Locate conveniently @ 651 W Poplar in Collierville TN. Come see the largest selection of used diesel trucks in the area.

Multiple Financing and Warranty Options for all buyers. Call or Text 901//304//7300 today for more information.

2015 Jeep Wrangler Unlimited X

Collierville Auto Center - 901-315-2155 - View this car on our website at colliervilleautocenter.com/7177277/ebrochure

Vehicle History Report : as Of 06/09/2023

CARFAX

Snapshot

2015 JEEP WRANGLER UNLIMITED X



No accidents or damage reported to CARFAX



12 Service history records



At least 1 open recall



2 Previous owners



Personal vehicle



101,335 Last reported odometer reading



FREE CARFAX Report

See the full CARFAX Report for additional information

*carfax Snapshot is a reflection of available information on the date the report was pulled. carfax is constantly being updated with new information and is subject to change at any time.

Our Location :



2015 Jeep Wrangler Unlimited X

Collierville Auto Center - 901-315-2155 - View this car on our website at colliervilleautocenter.com/7177277/ebrochure

Installed Options

Interior

- 2 12V DC Power Outlets- 2 12V DC Power Outlets and 1 120V AC Power Outlet
- 2 Seatback Storage Pockets
- 4-Way Passenger Seat -inc: Manual Recline and Fore/Aft Movement
- 6-Way Driver Seat -inc: Manual Recline, Height Adjustment and Fore/Aft Movement
- 60-40 Folding Split-Bench Front Facing Fold Forward Seatback Cloth Rear Seat
- Air Conditioning w/Auto Temp Control -inc: Humidity Sensor, Air Filtering
- Analog Appearance- Carpet Floor Trim, Carpet And Rubber Mat
- Cloth Bucket Front Seats w/Cloth Back Material - Compass
- Cruise Control w/Steering Wheel Controls- Day-Night Auto-Dimming Rearview Mirror
- Delayed Accessory Power- Driver And Passenger Visor Vanity Mirrors
- Fade-To-Off Interior Lighting- Front Center Armrest w/Storage- Front Cupholder
- Front Map Lights- Full Carpet Floor Covering
- Full Floor Console w/Locking Storage, 2 12V DC Power Outlets and 1 120V AC Power Outlet
- Gauges -inc: Speedometer, Odometer, Engine Coolant Temp, Tachometer, Trip Odometer and Trip Computer
- Heated Front Seats
- Instrument Panel Bin, Dashboard Storage, Driver And Passenger Door Bins

- Interior Trim -inc: Deluxe Sound Insulation, Metal-Look Instrument Panel Insert, Metal-Look Door Panel Insert and Metal-Look Interior Accents
- Leather Wrapped Steering Wheel- Locking Glove Box- MOPAR Slush Mats
- Manual Adjustable Front Head Restraints and Fixed Rear Head Restraints
- Manual Tilt Steering Column- Outside Temp Gauge- Perimeter Alarm
- Power 1st Row Windows w/Driver And Passenger 1-Touch Down
- Power Door Locks w/Autolock Feature- Power Rear Windows- Rear Cupholder
- Remote Keyless Entry w/Integrated Key Transmitter, Illuminated Entry and Panic Button
- Sentry Key Immobilizer- Trip Computer

Exterior

- Aluminum Spare Wheel- Auto On/Off Aero-Composite Halogen Headlamps
- Black Door Handles- Black Power Heated Side Mirrors w/Manual Folding
- Black Side Windows Trim- Body-Colored Fender Flares- Clearcoat Paint
- Conventional Rear Cargo Access- Convertible w/Fixed Roll-Over Protection
- Deep Tinted Glass- Front Bumper w/2 Tow Hooks- Front Fog Lamps
- Full-Size Spare Tire Mounted Outside Rear- Fully Galvanized Steel Panels
- Rear Bumper w/1 Tow Hook- Sunrider Soft Top
- Tailgate/Rear Door Lock Included w/Power Door Locks- Variable Intermittent Wipers

Safety

- 2 12V DC Power Outlets- 2 12V DC Power Outlets and 1 120V AC Power Outlet
- 2 Seatback Storage Pockets
- 4-Way Passenger Seat -inc: Manual Recline and Fore/Aft Movement
- 6-Way Driver Seat -inc: Manual Recline, Height Adjustment and Fore/Aft Movement
- 60-40 Folding Split-Bench Front Facing Fold Forward Seatback Cloth Rear Seat
- Air Conditioning w/Auto Temp Control -inc: Humidity Sensor, Air Filtering
- Analog Appearance- Carpet Floor Trim, Carpet And Rubber Mat
- Cloth Bucket Front Seats w/Cloth Back Material - Compass
- Cruise Control w/Steering Wheel Controls- Day-Night Auto-Dimming Rearview Mirror
- Delayed Accessory Power- Driver And Passenger Visor Vanity Mirrors
- Fade-To-Off Interior Lighting- Front Center Armrest w/Storage- Front Cupholder
- Front Map Lights- Full Carpet Floor Covering
- Full Floor Console w/Locking Storage, 2 12V DC Power Outlets and 1 120V AC Power Outlet
- Gauges -inc: Speedometer, Odometer, Engine Coolant Temp, Tachometer, Trip Odometer and Trip Computer
- Heated Front Seats
- Instrument Panel Bin, Dashboard Storage, Driver And Passenger Door Bins
- Interior Trim -inc: Deluxe Sound Insulation, Metal-Look Instrument Panel Insert, Metal-Look Door Panel Insert and Metal-Look Interior Accents
- Leather Wrapped Steering Wheel- Locking Glove Box- MOPAR Slush Mats
- Manual Adjustable Front Head Restraints and Fixed Rear Head Restraints
- Manual Tilt Steering Column- Outside Temp Gauge- Perimeter Alarm
- Power 1st Row Windows w/Driver And Passenger 1-Touch Down
- Power Door Locks w/Autolock Feature- Power Rear Windows- Rear Cupholder
- Remote Keyless Entry w/Integrated Key Transmitter, Illuminated Entry and Panic Button
- Sentry Key Immobilizer- Trip Computer

Mechanical

- 160 Amp Alternator- 22.5 Gal. Fuel Tank- 3.21 Rear Axle Ratio
- 4-Wheel Disc Brakes w/4-Wheel ABS, Front And Rear Vented Discs, Brake Assist and Hill Hold Control
- 50 State Emissions- 600CCA Maintenance-Free Battery- 880# Maximum Payload
- Auto Locking Hubs- Brake Actuated Limited Slip Differential- Engine Oil Cooler
- Engine: 3.6L V6 24V VVT- Front And Rear Anti-Roll Bars- GVWR: 5,500 lbs
- HD Shock Absorbers- Heavy Duty Suspension w/Gas Shocks
- Hydraulic Power-Assist Steering- Leading Link Front Suspension w/Coil Springs
- Manual Transfer Case- Part-Time Four-Wheel Drive- Single Stainless Steel Exhaust
- Solid Axle Rear Suspension w/Coil Springs- Towing Equipment -inc: Trailer Sway Control
- Transmission: 6-Speed Manual (NSG370) (DISC)

Option Packages

Factory Installed Packages

- _____
ENGINE: 3.6L V6 24V VVT



*PRICE LISTED INCLUDES A \$599 PROCESSING FEE AND DOES NOT INCLUDE TAXES, TAGS, TITLE, LICENSE, REGISTRATION OR OTHER DELIVERY CHARGES.

Collierville Auto Center
colliervilleautocenter.com
901-315-2155

651 W Poplar
Collierville, TN 38017

© 2023 AutoRevo - All rights reserved. - Powered by AutoRevo