



2002 Mercedes-Benz G500

Website Price \$43,995

View this vehicle on our website at autoparkdallas.com



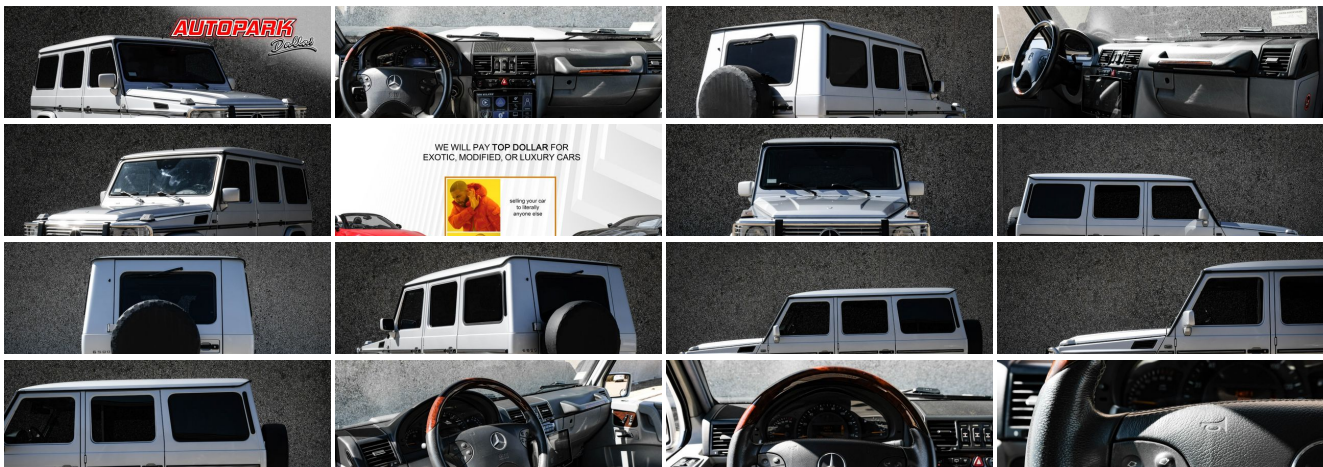
(214) 945-2601

2061 S Stemmons Fwy , Lewisville, TX 75067

Photos

Details

Contact





Specifications:

Year:	2002
VIN:	WDCYR49E12X131537
Make:	Mercedes-Benz
Stock:	1192
Model/Trim:	G500
Condition:	Pre-Owned
Body:	SUV
Exterior:	Brilliant Silver Metallic
Engine:	5.0L SOHC SMPI 24-valve V8 engine
Interior:	Gray Leather
Mileage:	99,765
Drivetrain:	4 Wheel Drive
Economy:	City 12 / Highway 14

Vehicle Description

AutoPark Dallas is thrilled to offer you this 2002 Mercedes-Benz G500 for sale! The timeless body style of the G-Wagon has always stood the test of time from Mercedes, and with good reason. Whether it's hitting the off road trails or driving in luxury and class through the city, the G-Wagon can do it all. This example comes in a beautiful **Brilliant Silver Metallic** exterior over a **Gray Leather** interior, and has been equipped with All-Terrain tires to help beef up the look of the capable SUV! In addition to **Heated Front Seats**, a **Boss Head Unit** has been installed as well to really bring the interior technology forward, offering Bluetooth capability among other features. Come check out why the G-Wagon has always turned heads and remained a staple in the Mercedes lineup today. **DO! NOT! HESITATE!!!** To swing by and check out this Mercedes G500 that we have parked here in our indoor 16,000 Sq Ft Showroom located in Dallas, Texas amongst our inventory of 100+ other Unique / Modified and Luxury Vehicles!

2002 Mercedes-Benz G500

****CLEAN CARFAX****

BOSS AFTERMARKET HEAD UNIT W/ BLUETOOTH

ALL-TERRAIN TIRES

HEATED FRONT SEATS

BRILLIANT SILVER METALLIC EXTERIOR

GRAY LEATHER INTERIOR

Financing is available!

Check out our Payment Calculator to get an estimate on your monthly payments!

OR

Get pre-approved in no time by filling out a credit application on the 'Finance' section of our website!

We also offer MANY different Extended Warranty options!

Check out our Google Reviews by *Clicking* this LINK!

Referrals and Testimonials is what our business is built on!

The team here at AutoPark Dallas, is dedicated to offering a level of customer service not usually found in the automobile industry. Thanks to years of extensive car buying / selling experience, we pursue quality used and new vehicles that are hand-picked from factory sources. Our love for automobiles and dislike of traditional dealership tactics is what motivates us to provide the service we do! The pride we take in continuing this service long after the vehicle has been delivered is what we strive for! Looking forward to making every effort to see that our customer is completely satisfied and a friend for life!

Pre-purchase inspections are always welcomed!

We also offer airport pick-up, competitive financing options, free CARFAX Reports, Car Shipping nationwide, Extended Warranty plans, and so much more!

Trade-In(s) are always accepted or sell us your used car (MODIFIED OR NOT)! Please call or text for more information about Trade-Ins or selling your car to us @ (214) 945-2601!

#(214) 945-2601

Call or Text **Anytime!**

Se habla Español

WE BUY CARS!

WWW.AUTOPARKDALLAS.COM

Installed Options

Interior

- 10-way pwr adjustable heated leather front bucket seats w/4-way head restraints, 3-position memory
- AM/FM/weatherband stereo-inc: 6-disc CD changer, (9) speakers - Burl walnut trim
- COMAND integrated GPS satellite navigation system w/in-dash CD-ROM drive
- Multifunction display-inc: digital clock, outside temp, gear selection, transfer-case range selection, digital speed readout, engine coolant temperature, odometers, trip computer, Flexible Service System, oil level, audio status, navigational instruction, programmable vehicle settings, reminder/malfunction messaging
- (4) map reading lamps
- 4-way pwr adjustable steering column w/memory, easy entry/exit feature
- 60/40 split fold-flat heated rear seat w/(3) height-adjustable head restraints
- Automatic anti-theft alarm system w/automatic notification
- Automatic climate control-inc: dual temp controls, dust filter, REST mode
- Carpeted cargo area w/tie-down hooks- Carpeted front/rear floor mats
- Central locking system-inc: selective unlocking, window/sunroof control, infrared remote control
- Cruise control- Electronic analog speedometer, tachometer, and fuel gauge
- HomeLink compatible garage door control
- Leather/walnut trimmed steering wheel & shift knob
- Pwr windows w/one-touch express-down- Rear window defroster
- Remote-operated illuminated entry system- Tele Aid concierge service
- Velour carpet including cargo floor

Exterior

- Aluminum running boards
- Dual heated pwr mirrors-inc: pwr fold-in feature, parking-assist right-side mirror
- Halogen front foglamps- Intermittent rear wiper w/washer
- Privacy glass for rear doors, rear quarters, cargo door
- Programmable daytime running lamps- Rain-sensing intermittent front wipers w/washer
- Single red rear foglamp
- Variable-focus halogen headlamps-inc: driver-selectable light-sensing auto-on feature, clear lenses

Safety

- 10-way pwr adjustable heated leather front bucket seats w/4-way head restraints, 3-position memory
- AM/FM/weatherband stereo-inc: 6-disc CD changer, (9) speakers - Burl walnut trim
- COMAND integrated GPS satellite navigation system w/in-dash CD-ROM drive
- Multifunction display-inc: digital clock, outside temp, gear selection, transfer-case range selection, digital speed readout, engine coolant temperature, odometers, trip computer, Flexible Service System, oil level, audio status, navigational instruction, programmable vehicle settings, reminder/malfunction messaging
- (4) map reading lamps
- 4-way pwr adjustable steering column w/memory, easy entry/exit feature
- 60/40 split fold-flat heated rear seat w/(3) height-adjustable head restraints
- Automatic anti-theft alarm system w/automatic notification
- Automatic climate control-inc: dual temp controls, dust filter, REST mode
- Carpeted cargo area w/tie-down hooks- Carpeted front/rear floor mats
- Central locking system-inc: selective unlocking, window/sunroof control, infrared remote control
- Cruise control- Electronic analog speedometer, tachometer, and fuel gauge
- HomeLink compatible garage door control
- Leather/walnut trimmed steering wheel & shift knob
- Pwr windows w/one-touch express-down- Rear window defroster
- Remote-operated illuminated entry system- Tele Aid concierge service
- Velour carpet including cargo floor

Mechanical

- 4 wheel anti-lock braking system (ABS)- Electronic Stability Program (ESP)
- Full-time 4-wheel drive w/4-wheel Electronic Traction System (4-ETS)
- 18" x 7.5" 5-spoke alloy wheels - 2-speed electronic transfer case
- 265/60VR18 mud & snow performance tires- 3.46 axle ratio
- 5-speed automatic transmission-inc: adaptive controls, OD, Touch Shift manual control
- 5.0L SOHC SMPI 24-valve V8 engine
- Brake Assist applies maximum brake force for emergency stop
- Electronic Brake Force Distribution- Front stabilizer bar
- Front/center/rear locking differentials w/dashboard controls
- Pwr 4-wheel front vented/solid rear disc brakes
- Recirculating-ball steering w/power assist, hydraulic damper
- Rigid front/rear axles w/longitudinal & transverse links, coil springs, gas-pressurized shock absorbers



Auto Park Dallas

View this car on our website at autoparkdallas.com/7176477

Website: autoparkdallas.com

Phone: (214) 945-2601

Map: [2061 S Stemmons Fwy, Lewisville, TX 75067](#)

