

2023 Subaru Outback Onyx Edition XT

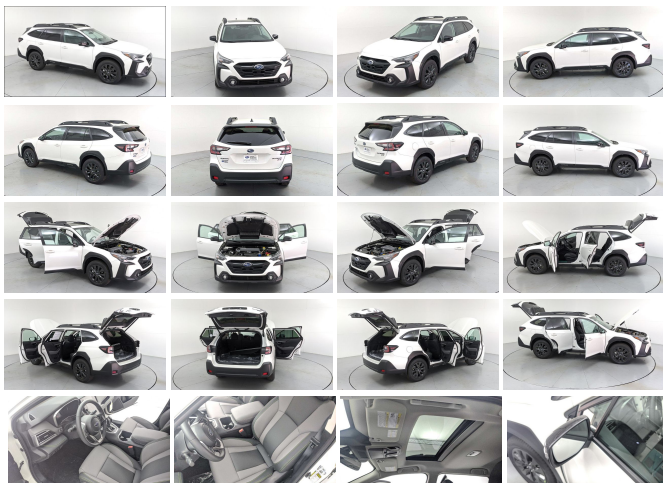
View this car on our website at charlestonautosales.com/7176315/ebrochure



Lowest **\$40,453**

Specifications:

Year:	2023
VIN:	4S4BTGLD9P3182924
Make:	Subaru
Stock:	SP182924
Model/Trim:	Outback Onyx Edition XT
Condition:	New
Body:	SUV
Exterior:	Crystal White Pearl
Engine:	Engine: 2.4L DOHC 16 Valve 4-Cyl Intercooled Turbo -inc: Horizontally opposed, Dual Active Valve Control System (DAVCS) Variable Valve Timing, auto start-stop and Electronic Throttle Control (ETC)
Interior:	Gray
Mileage:	0
Drivetrain:	All Wheel Drive
Economy:	City 22 / Highway 29



Navigation, Sunroof, Heated Seats, Satellite Radio, Back-Up Camera, Power Liftgate, All Wheel Drive, Turbo Charged, Alloy Wheels, Heated Rear Seat. Onyx Edition XT trim. FUEL EFFICIENT 29 MPG Hwy/22 MPG City! KEY FEATURES INCLUDE Navigation, Sunroof, All Wheel Drive, Power Liftgate, Heated Driver Seat, Heated Rear Seat, Back-Up Camera, Turbocharged, Satellite Radio, iPod/MP3 Input, Onboard Communications System, Aluminum Wheels, Remote Engine Start, Dual Zone A/C, Blind Spot Monitor Rear Spoiler, MP3 Player, Remote Trunk Release, Privacy Glass, Keyless Entry. WHO WE ARE You've got a friend in the car business. Fuel economy calculations based on original manufacturer data for trim engine configuration. Please confirm the accuracy of the included equipment by calling us prior to purchase.

Our Location :



2023 Subaru Outback Onyx Edition XT

Charleston Auto Sales - (843) 297-3211 - View this car on our website at charlestonautosales.com/7176315/ebrochure

Installed Options

Interior

- Heated Front Bucket Seats -inc: height and tilt adjustable head restraints, whiplash reducing front seats, 10-way power driver's seat w/2-way power lumbar, 8-way power front passenger seat and divided seatback pocket
- 8-Way Driver Seat- Passenger Seat
- 60-40 Folding Bench Front Facing Heated Manual Reclining Fold Forward Seatback Rear Seat
- Manual Tilt/Telescoping Steering Column
- Gauges -inc: Speedometer, Odometer, Engine Coolant Temp, Tachometer, Trip Odometer and Trip Computer
- Power Rear Windows and Fixed 3rd Row Windows- Leather/Metal-Look Steering Wheel
- Front Cupholder- Rear Cupholder- Compass- Valet Function
- Power Fuel Flap Locking Type
- Remote Keyless Entry w/Integrated Key Transmitter, 2 Door Curb/Courtesy, Illuminated Entry, Illuminated Ignition Switch and Panic Button
- Proximity Key For Doors And Push Button Start
- Remote Releases -Inc: Proximity Cargo Access- HomeLink Garage Door Transmitter
- Cruise Control w/Steering Wheel Controls- Distance Pacing w/Traffic Stop-Go
- Voice Activated Dual Zone Front Automatic Air Conditioning
- HVAC -inc: Underseat Ducts and Console Ducts - Illuminated Locking Glove Box
- Driver Foot Rest- Full Cloth Headliner- Leather/Metal-Look Gear Shifter Material
- Interior Trim -inc: Leatherette/Piano Black Instrument Panel Insert, Metal-Look/Piano Black Door Panel Insert, Metal-Look/Piano Black Console Insert and Piano Black/Metal-Look Interior Accents
- Leatherette Door Trim Insert- StarTex-Trimmed Upholstery -inc: green stitching
- Driver And Passenger Visor Vanity Mirrors w/Driver And Passenger Illumination, Driver And Passenger Auxiliary Mirror
- Day-Night Auto-Dimming Rearview Mirror
- Full Floor Console w/Covered Storage, Mini Overhead Console w/Storage and 3 12V DC Power Outlets
- Front Map Lights- Delay Off Interior Lighting
- Full Carpet Floor Covering -inc: Carpet Front And Rear Floor Mats

- Full Carpet Floor Covering -inc: Carpet Front And Rear Floor Mats
- Carpet Floor Trim and Vinyl/Rubber Mat- Roll-Up Cargo Cover- Trunk/Hatch Auto-Latch
- Cargo Space Lights- FOB Controls -inc: Cargo Access
- STARLINK Security Plus (6-months free trial) Tracker System
- Smart Device Remote Engine Start- Driver / Passenger And Rear Door Bins
- Delayed Accessory Power- Power Door Locks w/Autolock Feature
- Power 1st Row Windows w/Front And Rear 1-Touch Up/Down
- Redundant Digital Speedometer- Trip Computer- Outside Temp Gauge
- Analog Appearance- Systems Monitor- Manual Adjustable Rear Head Restraints
- Front Center Armrest w/Storage and Rear Center Armrest
- Seats w/Leatherette Back Material- Perimeter Alarm- Immobilizer- Air Filtration
- 3 12V DC Power Outlets

Exterior

- Wheels: 18" x 7J Black Aluminum Alloy - Tires: 225/60R18 100H All Season
- Aluminum Spare Wheel- Full-Size Spare Tire Mounted Inside Under Cargo
- Clearcoat Paint
- Express Open/Close Sliding And Tilting Laminated Glass 1st Row Sunroof w/Sunshade
- Body-Colored Front Bumper w/Black Rub Strip/Fascia Accent
- Body-Colored Rear Bumper w/Black Rub Strip/Fascia Accent
- Black Bodyside Cladding and Black Wheel Well Trim- Body-Colored Door Handles
- Black Side Windows Trim
- Black Power Heated Side Mirrors w/Manual Folding and Turn Signal Indicator
- Fixed Rear Window w/Fixed Interval Wiper and Defroster- Deep Tinted Glass
- Variable Intermittent Wipers w/Heated Wiper Park- Galvanized Steel/Aluminum Panels
- Lip Spoiler- Black Grille- Power Liftgate Rear Cargo Access
- Tailgate/Rear Door Lock Included w/Power Door Locks- Roof Rack
- Auto On/Off Projector Beam Led Low/High Beam Daytime Running Auto-Leveling Directionally Adaptive Auto High-Beam Headlamps
- Front Fog Lamps- Perimeter/Approach Lights- LED Brakelights
- Headlights-Automatic Highbeams

Safety

- Heated Front Bucket Seats -inc: height and tilt adjustable head restraints, whiplash reducing front seats, 10-way power driver's seat w/2-way power lumbar, 8-way power front passenger seat and divided seatback pocket
- 8-Way Driver Seat- Passenger Seat
- 60-40 Folding Bench Front Facing Heated Manual Reclining Fold Forward Seatback Rear Seat
- Manual Tilt/Telescoping Steering Column
- Gauges -inc: Speedometer, Odometer, Engine Coolant Temp, Tachometer, Trip Odometer and Trip Computer
- Power Rear Windows and Fixed 3rd Row Windows- Leather/Metal-Look Steering Wheel
- Front Cupholder- Rear Cupholder- Compass- Valet Function
- Power Fuel Flap Locking Type
- Remote Keyless Entry w/Integrated Key Transmitter, 2 Door Curb/Courtesy, Illuminated Entry, Illuminated Ignition Switch and Panic Button
- Proximity Key For Doors And Push Button Start
- Remote Releases -Inc: Proximity Cargo Access- HomeLink Garage Door Transmitter
- Cruise Control w/Steering Wheel Controls- Distance Pacing w/Traffic Stop-Go
- Voice Activated Dual Zone Front Automatic Air Conditioning
- HVAC -inc: Underseat Ducts and Console Ducts - Illuminated Locking Glove Box
- Driver Foot Rest- Full Cloth Headliner- Leather/Metal-Look Gear Shifter Material
- Interior Trim -inc: Leatherette/Piano Black Instrument Panel Insert, Metal-Look/Piano Black Door Panel Insert, Metal-Look/Piano Black Console Insert and Piano Black/Metal-Look Interior Accents
- Leatherette Door Trim Insert- StarTex-Trimmed Upholstery -inc: green stitching
- Driver And Passenger Visor Vanity Mirrors w/Driver And Passenger Illumination, Driver And Passenger Auxiliary Mirror
- Day-Night Auto-Dimming Rearview Mirror
- Full Floor Console w/Covered Storage, Mini Overhead Console w/Storage and 3 12V DC Power Outlets
- Front Map Lights- Delay Off Interior Lighting
- Full Carpet Floor Covering -inc: Carpet Front And Rear Floor Mats
- Carpet Floor Trim and Vinyl/Rubber Mat- Roll-Up Cargo Cover- Trunk/Hatch Auto-Latch
- Cargo Space Lights- FOB Controls -inc: Cargo Access
- STARLINK Security Plus (6-months free trial) Tracker System
- Smart Device Remote Engine Start- Driver / Passenger And Rear Door Bins
- Delayed Accessory Power- Power Door Locks w/Autolock Feature
- Power 1st Row Windows w/Front And Rear 1-Touch Up/Down
- Redundant Digital Speedometer- Trip Computer- Outside Temp Gauge
- Analog Appearance- Systems Monitor- Manual Adjustable Rear Head Restraints
- Front Center Armrest w/Storage and Rear Center Armrest

- Front Center Airrest w/Storage and Rear Center Airrest
- Seats w/Leatherette Back Material- Perimeter Alarm- Immobilizer- Air Filtration
- 3 12V DC Power Outlets

Mechanical

- Engine: 2.4L DOHC 16 Valve 4-Cyl Intercooled Turbo -inc: Horizontally opposed, Dual Active Valve Control System (DAVCS) Variable Valve Timing, auto start-stop and Electronic Throttle Control (ETC)
- Transmission: Lineartronic Continuously Variable -inc: steering wheel paddle-shift control switches, 8-speed manual shift mode, high torque and X-MODE/dual-mode system: snow/dirt, deep snow/mud and Hill Descent Control (HDC)
- 4.111 Axle Ratio- GVWR: 5,026 lbs- Engine Auto Stop-Start Feature
- Transmission w/HD Oil Cooler- Steering Wheel Paddle Shift Control Switches
- Full-Time All-Wheel- Battery w/Run Down Protection- 190 Amp Alternator
- 900# Maximum Payload- Gas-Pressurized Shock Absorbers
- Front And Rear Anti-Roll Bars- Electric Power-Assist Speed-Sensing Steering
- 18.5 Gal. Fuel Tank- Quasi-Dual Stainless Steel Exhaust- Permanent Locking Hubs
- Strut Front Suspension w/Coil Springs
- Double Wishbone Rear Suspension w/Coil Springs
- 4-Wheel Disc Brakes w/4-Wheel ABS, Front And Rear Vented Discs, Brake Assist, Hill Hold Control and Electric Parking Brake
- Brake Actuated Limited Slip Differential

Charleston Auto Sales
charlestonautosales.com
(843) 297-3211

8261 Rivers Ave
Charleston, SC 29406

© 2023 AutoRevo - All rights reserved. - Powered by AutoRevo