



2010 Toyota RAV4 4WD

Our Price \$14,950

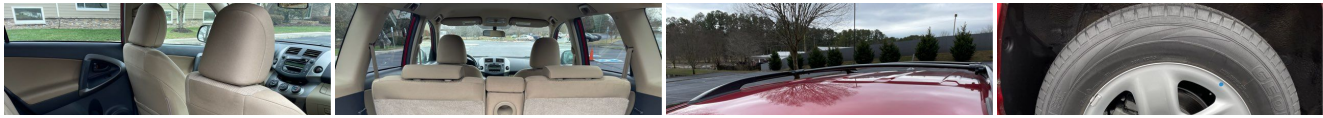
View this vehicle on our website at importsandmore.net



(865) 988-4133
10504 Highway 11 E, Lenoir City, TN 37772

- Photos
- Details
- Contact





Specifications:

Year:	2010
VIN:	JTMBF4DV5A5019149
Make:	Toyota
Model/Trim:	RAV4 4WD
Condition:	Pre-Owned
Body:	SUV
Exterior:	Barcelona Red Metallic
Engine:	2.5L DOHC SFI 16-valve dual VVT-i 4-cyl engine
Interior:	Sand Beige Cloth
Transmission:	Automatic
Mileage:	82,045
Drivetrain:	4 Wheel Drive
Economy:	City 21 / Highway 27

Vehicle Description

ONE OWNER, 82K Miles! EXCELLENT CONDITION! YES, a nice 2010 RAV4 4WD under \$15000 with NO Dealer Doc Fees, 82k miles! Automatic, AC, all power! factory wheels! cruise, NICE INTERIOR! CD stereo, Excellent tires and EXCELLENT brakes, Drives great, CARFAX/ AUTOCHECK CERTIFIED, ASE inspection and road test, Come see a great SUV at this price point! Serving you since 1998, A+ member of Better Business Bureau

Installed Options

Interior

- (10) cup & bottle holders- (3) 12V auxiliary pwr outlets -inc: (2) front, (1) cargo area
- 6-way driver/4-way passenger front passenger bucket seats -inc: driver height adjustment, seatback pockets
- 60/40 split fabric-trimmed rear bench w/slide/recline function, 1-touch fold-flat lever, height-adjustable headrest, center armrest
- Active front headrests- Air conditioning w/air filtration
- Amber-illuminated Optitron instrument cluster -inc: speedometer, tachometer, fuel gauge, LCD odometer w/(2) tripmeters
- Cargo area storage pockets in wheel housing w/(2) cupholders
- Cruise control w/brake deceleration feature- Digital clock
- Door panel storage pockets, bottle holders- Dual glove boxes
- Dual visor vanity mirrors w/sliding extensions, roof-mounted vanity light
- Engine immobilizer- Fabric-trimmed seats
- Illuminated entry -inc: key illumination, interior light, front map light
- Instrument panel display -inc: outside temp gauge, average/instantaneous fuel economy
- Multi-function center console -inc: (2) illuminated cupholders, storage box, cell phone storage pocket, covered console door
- Pwr door locks- Pwr windows w/driver-side auto up/down & jam protection
- Rear deck storage -inc: water-repellant foldable deck board
- Rear window defogger w/timer- Remote hood & fuel filler door releases
- Remote keyless entry- Tilt & telescoping steering wheel
- Warning lights -inc: seatbelt disconnect, airbag, door-ajar, battery, oil pressure, brake, vehicle stability control, traction control, ABS, check engine, scheduled maintenance, low-fuel

Exterior

- 16" steel wheels w/covers- P215/70R16 all-season tires- Auto off headlamps
- Black foldable pwr mirrors- Black grille- Color-keyed bumpers
- Color-keyed combination hard & soft shell spare tire cover
- Color-keyed rear door handle- Color-keyed rear spoiler w/stop lamp- Full-size spare tire
- Halogen headlamps- Intermittent rear wiper- LED rear lamps
- Rear bumper step w/black protector molding
- Side-opening rear door w/hold-open feature

- One-opening rear door w/one open feature
- Washer-linked variable intermittent windshield wipers

Safety

- (10) cup & bottle holders- (3) 12V auxiliary pwr outlets -inc: (2) front, (1) cargo area
- 6-way driver/4-way passenger front passenger bucket seats -inc: driver height adjustment, seatback pockets
- 60/40 split fabric-trimmed rear bench w/slide/recline function, 1-touch fold-flat lever, height-adjustable headrest, center armrest
- Active front headrests- Air conditioning w/air filtration
- Amber-illuminated Optitron instrument cluster -inc: speedometer, tachometer, fuel gauge, LCD odometer w/(2) tripmeters
- Cargo area storage pockets in wheel housing w/(2) cupholders
- Cruise control w/brake deceleration feature- Digital clock
- Door panel storage pockets, bottle holders- Dual glove boxes
- Dual visor vanity mirrors w/sliding extensions, roof-mounted vanity light
- Engine immobilizer- Fabric-trimmed seats
- Illuminated entry -inc: key illumination, interior light, front map light
- Instrument panel display -inc: outside temp gauge, average/instantaneous fuel economy
- Multi-function center console -inc: (2) illuminated cupholders, storage box, cell phone storage pocket, covered console door
- Pwr door locks- Pwr windows w/driver-side auto up/down & jam protection
- Rear deck storage -inc: water-repellant foldable deck board
- Rear window defogger w/timer- Remote hood & fuel filler door releases
- Remote keyless entry- Tilt & telescoping steering wheel
- Warning lights -inc: seatbelt disconnect, airbag, door-ajar, battery, oil pressure, brake, vehicle stability control, traction control, ABS, check engine, scheduled maintenance, low-fuel

Mechanical

- 2.5L DOHC SFI 16-valve dual VVT-i 4-cyl engine
- 4-speed ECT automatic transmission w/OD
- Double-wishbone rear suspension w/coil springs, trailing arms
- Electric pwr rack & pinion steering
- Electronic on-demand 4-wheel drive w/manual lock switch- Front & rear stabilizer bars
- Independent MacPherson strut front suspension- Pwr vented front/solid rear disc brakes

Imports and More Inc

Imports and More Inc

View this car on our website at importsandmore.net/7175866

Website: importsandmore.net

Phone: (865) 988-4133

Map: [10504 Highway 11 E, Lenoir City, TN 37772](#)

