



2010 Toyota Prius IV

Our Price \$7,995

View this vehicle on our website at dakotamotor.com



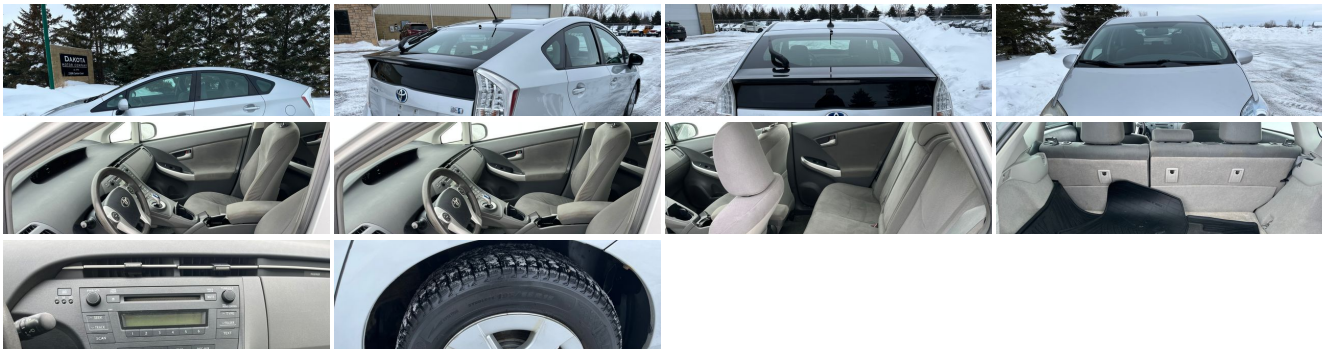
[\(651\) 460-6655](tel:6514606655)

22098 Canton Court , Farmington, MN 55024

Photos

Details

Contact



Specifications:

Year: 2010

VIN: JTDKN3DU7A0096218

Make:	Toyota
Model/Trim:	Prius IV
Condition:	Pre-Owned
Body:	Sedan
Exterior:	Silver
Engine:	1.8L DOHC 16-valve VVT-i Atkinson-cycle I4 hybrid engine
Interior:	Gray Leather
Mileage:	163,950
Drivetrain:	Front Wheel Drive
Economy:	City 51 / Highway 48

Vehicle Description

Installed Options

Interior

- Air conditioning w/electric A/C compressor- Auto-dimming rearview mirror
- Engine immobilizer- Leather seat material- Pwr door locks w/anti-lockout feature
- Three-door smart key entry system -inc: panic button, keyless entry
- Tilt/telescopic adjustable steering wheel w/Touch Tracer Display -inc: audio controls, HVAC controls
- (2) 12V pwr outlets- (4) retractable assist grips
- 6-way adjustable drivers seat w/vertical adjustment - 60/40 split rear seat
- Active headrests- Adjustable front/rear headrests w/fold-forward rear headrests
- Cargo area lamp
- Central instrument display -inc: digital speedometer, instant fuel consumption, fuel gauge, shift-lever indicator
- Cruise control- Dual compartment glove box
- Dual front sunvisors w/illuminated vanity mirrors- Front bucket seats
- Front center console w/sliding armrest -inc: storage compartment w/removable utility tray, wire-management feature, (2) cup holders
- Front seatback pockets- Heated front seats w/driver lumbar support
- HomeLink universal garage door opener- Illuminated entry w/step lamp
- Multi-information display -inc: energy monitor, fuel consumption history, hybrid system indicator, odometer w/twin tripmeters
- Overhead console w/maplights & shift illumination- Plasmacluster ionizer
- Pwr windows w/auto up/down- Rear dome light
- Rear fold-down armrest w/(2) cup holders- Rear window electric defogger w/timer
- Retained accessory pwr

Exterior

- 15" 5-spoke aluminum alloy wheels w/wheel covers
- Auto-off multi-reflector projector headlamps- Color-keyed folding pwr heated mirrors
- High solar energy absorbing (HSEA) glass- Intermittent rear window wiper
- LED tail lamps- P195/65R15 all-season tires- Rear deck spoiler
- T135/80D16 compact spare tire- Tonneau cover w/clasp for under-floor storage
- Washer-linked variable intermittent windshield wipers- Water-repellent front glass

Safety

- Air conditioning w/electric A/C compressor- Auto-dimming rearview mirror
- Engine immobilizer- Leather seat material- Pwr door locks w/anti-lockout feature
- Three-door smart key entry system -inc: panic button, keyless entry
- Tilt/telescopic adjustable steering wheel w/Touch Tracer Display -inc: audio controls, HVAC controls
- (2) 12V pwr outlets- (4) retractable assist grips
- 6-way adjustable drivers seat w/vertical adjustment - 60/40 split rear seat
- Active headrests- Adjustable front/rear headrests w/fold-forward rear headrests
- Cargo area lamp
- Central instrument display -inc: digital speedometer, instant fuel consumption, fuel gauge, shift-lever indicator
- Cruise control- Dual compartment glove box
- Dual front sunvisors w/illuminated vanity mirrors- Front bucket seats
- Front center console w/sliding armrest -inc: storage compartment w/removable utility tray, wire-management feature, (2) cup holders

- Front seatback pockets- Heated front seats w/driver lumbar support
- HomeLink universal garage door opener- Illuminated entry w/step lamp
- Multi-information display -inc: energy monitor, fuel consumption history, hybrid system indicator, odometer w/twin tripmeters
- Overhead console w/maplights & shift illumination- Plasmacluster ionizer
- Pwr windows w/auto up/down- Rear dome light
- Rear fold-down armrest w/(2) cup holders- Rear window electric defogger w/timer
- Retained accessory pwr

Mechanical

- Hybrid system -inc: sealed nickel-metal hydride battery, integrated permanent synchronous electric motor, integrated regenerative brake system
- Push button ignition- 1.8L DOHC 16-valve VVT-i Atkinson-cycle I4 hybrid engine
- Continuously variable transmission (ECVT)- Electric pwr assisted rack & pinion steering
- Electronic throttle control system w/intelligence (ETCS-i) -inc: Eco, EV & power driving modes
- Front wheel drive- Independent MacPherson strut suspension w/stabilizer bar
- Torsion beam rear suspension- Ventilated front & solid rear pwr disc brakes

Dakota Motor Company

Dakota Motor Company

View this car on our website at dakotamotor.com/7175006

Website: dakotamotor.com

Phone: (651) 460-6655

Map: [22098 Canton Court, Farmington, MN 55024](https://www.google.com/maps/place/22098+Canton+Court,+Farmington,+MN+55024)

