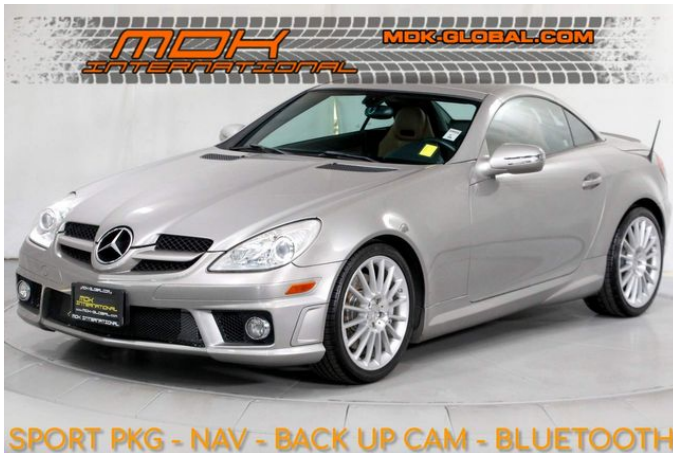


2009 Mercedes-Benz SLK350 3.5L

SALES DEPARTMENT (310) 990 0770

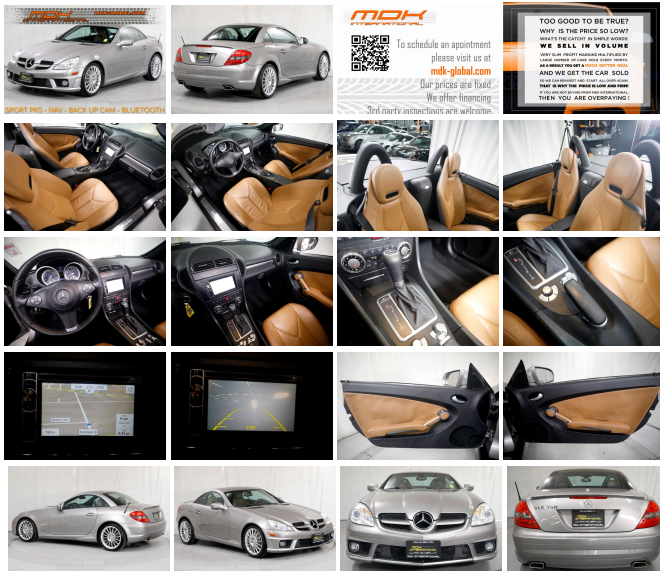
View this car on our website at mdk-global.com/7174312/ebrochure



Our Price **\$13,990**

Specifications:

Year:	2009
VIN:	WDBWK58F79F196828
Make:	Mercedes-Benz
Model/Trim:	SLK350 3.5L
Condition:	Pre-Owned
Body:	Convertible
Exterior:	Pewter Metallic
Engine:	3.5L DOHC SMPI 24-valve V6 engine
Interior:	Natural Beige Leather
Mileage:	73,495
Drivetrain:	Rear Wheel Drive
Economy:	City 18 / Highway 26



- * Very rare sport pkg SLK350
- * First year of an upgraded harmonic balancer shaft from Mercedes - previous years had issues with that part
- * Upgraded navigation head-unit with Bluetooth and back up camera
- * Heating pkg w/ heated seats + air scarf neck area heating
- * Power seats
- * Automatic climate control
- * Clean title
- * Carfax certified
- * Please note, some damages and 1 accident were reported to Carfax in the past - third party inspections are welcome

BY APPOINTMENT ONLY

OUR PRICES ARE FIRM

- Financing available
- Warranties available
- Third party inspections are welcome

welcome

- Trade-ins are welcome
- We buy cars and pay finders free
- Nationwide door-to-door delivery options

For more information, please see our [FAQ](#) You can also schedule an appointment / apply for financing / check availability on our website at:

mdk-global.com

2009 Mercedes-Benz SLK350 3.5L

MDK International - (310) 990 0770 - View this car on our website at mdk-global.com/7174312/ebrochure

Vehicle History Report : as Of 03/29/2023

CARFAX

Snapshot

2009 MERCEDES-BENZ SLK SLK 350



Accident reported



9 Service history records



4 Previous owners



Types of owners: Personal lease
Personal



Last owned in California



73,500 Last reported odometer reading

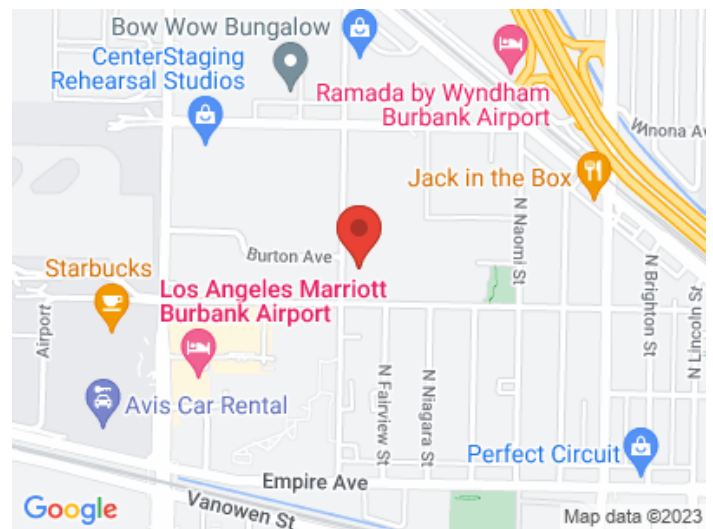


FREE CARFAX Report

See the full CARFAX Report for additional information

*carfax Snapshot is a reflection of available information on the date the report was pulled. carfax is constantly being updated with new information and is subject to change at any time.

Our Location :



Installed Options

Interior

- 3-spoke leather-wrapped 4-way tilt/telescopic sport steering wheel-inc: audio controls, multi-function display controls
- 8-way adjustable sport seats-inc: silver painted magnesium trim, height adjustable head restraints
- Aluminum trim- Anti-theft alarm system
- Audible reminders & messages-inc: exterior lamp failure, low fuel, engine oil, coolant, washer fluid, release parking brake, headlamps on, remove key from ignition
- Automatic dual-zone climate control-inc: dual rotary controls, electrostatic dust & pollen filters, active charcoal filter, REST mode w/engine heat recirculation feature or cabin ventilation, dash-top diffuser vent
- Black gauges w/white markings, silver instrument tubes
- Center console -inc: enclosed storage- Courtesy lamps w/delay shut-off- Cruise control
- Digital odometer, touch shift gear & mode selection- Dual front reading lamps
- Dual illuminated vanity mirrors
- Electronic analog speedometer, tachometer, fuel level, quartz clock
- Enclosed storage on rear cabin wall- Illuminated carpeted trunk- Illuminated glovebox
- Leather seat trim- Leather-wrapped shift knob- Locator lighting
- Mercedes-Benz Maintenance System Plus display-inc: distance remaining to next maintenance, type of service due, reminders, brake-pad wear
- Multi-function display in instrument cluster -inc: trip computer, exterior temp gauge, digital speedometer, coolant temp, maintenance system, audio status, reminder & malfunction messages, driver-programmable settings
- Night security illumination- Parcel net in RH footwell- Pockets in doors
- Pwr windows-inc: 1-touch express up/down, 1-button raising/lowering of all windows via pwr top switch
- Rear window defroster w/auto-shutoff based on time & driving speed & exterior temp
- Retractable dual cupholders- Rubber-studded brushed stainless-steel pedals
- SmartKey infrared remote -inc: trunk open, panic alarm, fuel filler door, selective unlock
- SmartKey system-inc: remote central locking system, anti-theft engine immobilizer, drive away automatic locking
- Stainless-steel door sill trim
- Tele Aid global positioning system (GPS) satellite system-inc: stolen vehicle recovery, remote door unlock service, automatic alarm & collision notification
- Touch turn signals (flashes (3) times w/1-touch)- Velour carpeting -inc: floor mats

Exterior

- 17" x 7.5" front/17" x 8.5" rear split 5-spoke aluminum wheels
- Electro-hydraulic retractable steel hardtop
- Formula 1-style nose w/color-keyed grille crossfins- Halogen front fog lamps
- P225/45R17 front high performance tires- P245/40R17 rear high performance tires
- Pwr heated mirrors -inc: integrated LED turn signals, reverse tilt down RH mirror, auto-dimming LH mirror, memory
- Red & smoked-tinted rear lamps w/LED brake & taillamps- Single rear red fog lamp
- Variable intermittent aero-blade windshield wipers
- Variable-focus halogen headlamps-inc: polycarbonate lenses, light-sensing auto-on, automatic lamp substitution

Safety

- 3-spoke leather-wrapped 4-way tilt/telescopic sport steering wheel-inc: audio controls, multi-function display controls
- 8-way adjustable sport seats-inc: silver painted magnesium trim, height adjustable head restraints
- Aluminum trim- Anti-theft alarm system
- Audible reminders & messages-inc: exterior lamp failure, low fuel, engine oil, coolant, washer fluid, release parking brake, headlamps on, remove key from ignition
- Automatic dual-zone climate control-inc: dual rotary controls, electrostatic dust & pollen filters, active charcoal filter, REST mode w/engine heat recirculation feature or cabin ventilation, dash-top diffuser vent
- Black gauges w/white markings, silver instrument tubes
- Center console -inc: enclosed storage- Courtesy lamps w/delay shut-off- Cruise control
- Digital odometer, touch shift gear & mode selection- Dual front reading lamps
- Dual illuminated vanity mirrors
- Electronic analog speedometer, tachometer, fuel level, quartz clock
- Enclosed storage on rear cabin wall- Illuminated carpeted trunk- Illuminated glovebox
- Leather seat trim- Leather-wrapped shift knob- Locator lighting
- Mercedes-Benz Maintenance System Plus display-inc: distance remaining to next

maintenance, type of service due, reminders, brake-pad wear

- Multi-function display in instrument cluster -inc: trip computer, exterior temp gauge, digital speedometer, coolant temp, maintenance system, audio status, reminder & malfunction messages, driver-programmable settings
- Night security illumination- Parcel net in RH footwell- Pockets in doors
- Pwr windows-inc: 1-touch express up/down, 1-button raising/lowering of all windows via pwr top switch
- Rear window defroster w/auto-shutoff based on time & driving speed & exterior temp
- Retractable dual cupholders- Rubber-studded brushed stainless-steel pedals
- SmartKey infrared remote -inc: trunk open, panic alarm, fuel filler door, selective unlock
- SmartKey system-inc: remote central locking system, anti-theft engine immobilizer, drive away automatic locking
- Stainless-steel door sill trim
- Tele Aid global positioning system (GPS) satellite system-inc: stolen vehicle recovery, remote door unlock service, automatic alarm & collision notification
- Touch turn signals (flashes (3) times w/1-touch)- Velour carpeting -inc: floor mats

Mechanical

- 2-piston perforated & ventilated front & 2-piston solid rear disc brakes
- 3.5L DOHC SMPI 24-valve V6 engine
- 7-speed driver-adaptive automatic transmission w/OD-inc: touch shift, optimum gear programming, comfort mode
- Front/rear lowered ride-height & stabilizer bars
- Independent 3-link front suspension-inc: coil springs over gas-pressurized shock absorbers, anti-dive geometry
- Independent 5-arm multi-link rear suspension-inc: separate coil springs, shock absorbers, anti-squat geometry, alignment control
- Rear wheel drive
- Vehicle-speed-sensitive pwr rack & pinion steering w/direct-steer system, integrated hydraulic damper

Option Packages

Factory Installed Packages

AUTOMATIC DIGITAL DUAL-ZONE CLIMATE CONTROL

\$730

HEATING PKG

-inc: AIRSCARF neck-level heating system, cloth windscreen, heated seats

\$990

PREMIUM I PKG

-inc: pwr seats w/memory, pwr steering column w/memory, 4-way lumbar support, Sirius satellite radio, iPod/MP3 media interface in glovebox, rain sensor wipers, SmartKey remote roof automation, garage door opener, interior lighting pkg, driver auto-dimming exterior mirror, auto-dimming interior mirror

\$2,950

SPORT PKG

-inc: 18" AMG multi-spoke aluminum wheels, P225/40R18 front tires, P245/35R18 tires, AMG front air dam, side skirts, rear apron & trunk lid spoiler, sport suspension, steering wheel mounted gearshift paddles w/manual mode

\$2,500

Option Packages Total

\$7,170

MDK International

mdk-global.com

(310) 990 0770

2420 N. Ontario St.

Burbank, California 91504

© 2023 AutoRevo - All rights reserved. - Powered by [AutoRevo](#)