



## 2020 Cadillac XT4 FWD Premium Luxury

**Alejandro Valdes 3057838676**

**Our Price \$24,998**

View this vehicle on our website at [oceanautosales.com](https://oceanautosales.com)



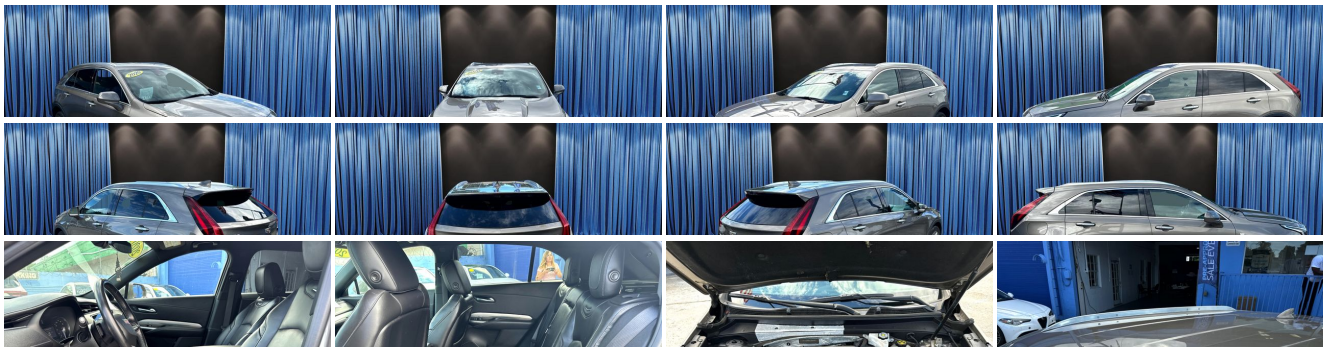
[3057838676](tel:3057838676)

6700 S.W. 24th Street (Coral Way) , Miami, FL 33155

[Photos](#)

[Details](#)

[Contact](#)





## Specifications:

<b>Year:</b>	2020
<b>VIN:</b>	1GYFZCR45LF046281
<b>Make:</b>	Cadillac
<b>Stock:</b>	046281
<b>Model/Trim:</b>	XT4 FWD Premium Luxury
<b>Condition:</b>	Pre-Owned
<b>Body:</b>	SUV
<b>Exterior:</b>	Silver Dusk Metallic
<b>Engine:</b>	ENGINE, 2.0L TURBO, 4-CYLINDER, SIDI
<b>Interior:</b>	Black Leather
<b>Mileage:</b>	67,066
<b>Drivetrain:</b>	Front Wheel Drive
<b>Economy:</b>	City 24 / Highway 30

## Vehicle Description

All prices subject to change without notice. Come and visit us at [www.oceanautosales.com](http://www.oceanautosales.com) for our expanded inventory. This offer excludes registration, tax, and all applicable fees. Online listings are W.A.C of at least 720 Beacon credit score and is subject to change without notice and cannot be combined with any other offer. We are not responsible for any typographical errors. Internet or any other promotional pricing cannot be used in conjunction with any other promotional offers. You must present ad / printout before or at the time of negotiation to receive this promotional offer. All prices are based on \$3000 Down or Trade of equal value.

### Vehicle History Report : as Of 07/04/2025

**2020 CADILLAC XT4 PREMIUM LUXURY**

No accidents or damage reported to CARFAX

1 Service history record

CARFAX 1-Owner vehicle

Rental vehicle

Last owned in Florida

### Installed Options

#### Interior

- Cruise control, electronic with set and resume speed (Upgradeable to (KSG) Adaptive Cruise Control - Advanced when (Y66) Driver Assist Package is ordered.)
- Floor mats, carpeted front and rear- Leather seating surfaces
- Rotary infotainment controller, console mounted, with jog capability
- Seat adjuster, passenger 6-way power (Upgradeable to (A7K) 8-way power passenger seat adjuster when (WPC) Comfort and Convenience Package is ordered.)
- Seat, driver power lumbar control, 2-way (Upgradeable to (AVK) 4-way driver power lumbar seat control when (WPC) Comfort and Convenience Package is ordered.)
- Seat, front passenger power lumbar, 2-way (Upgradeable to (AVU) 4-way front passenger power lumbar seat control when (WPC) Comfort and Convenience Package is ordered.)
- Seats, front bucket
- Steering column, manual rake and telescoping (Upgradeable to (N38) power rake and telescoping steering column when (CWM) Technology Package is ordered.)
- USB ports, full function one type A and one type C, front console
- Active Noise Cancellation- Adaptive Remote Start
- Air conditioning, dual-zone automatic climate control- Air filter, cabin- Air vents, rear
- Assist handles, driver, front passenger and rear outboard
- Cadillac Connected Access capable (Subject to terms. See onstar.com or dealer for details.)
- Cargo net anchors- Cargo shade, rear
- Cupholders 2 front in center console and 2 rear in second row center armrest. Additionally, 1 bottle holder in door storage pocket for driver and front passenger
- Defogger, rear-window electric- Drive mode selector
- Driver memory, recalls 2 "presets" for 8-way power driver seat and outside mirror
- Gauge cluster, 4.2" diagonal color reconfigurable Driver Information Center display (Upgradeable to (UHS) 8" diagonal color reconfigurable gauge cluster when (CWM) Technology Package is ordered.)
- Gearshift handle with Piano Black accents- Glovebox lockable

**67,066** Last reported odometer reading

**FREE CARFAX Report**

See the full CARFAX Report for additional information

\*carfax Snapshot is a reflection of available information on the date the report was pulled. carfax is constantly being updated with new information and is subject to change at any time.

- Steering, manual, with 1 hand break accents- Chrome, chrome
- Head restraints, 2-way adjustable (up/down), front
- Head restraints, rear, adjustable, folding- Keyless Access, passive entry
- Lighting, illuminated entry
- Lighting, interior ambient accent lighting in door panels and instrument panel
- Map pockets, driver and front passenger seatbacks
- Mini-umbrella holders driver and front passenger doors
- Mirror, inside rearview auto-dimming (Upgradeable to (DRZ) Rear Camera Mirror when (Y74) Enhanced Visibility Package is ordered.)
- Oil life monitor- Power outlet, rear auxiliary, 12-volt, cargo area
- Power outlets, 2 auxiliary, 12-volt, console- Power outlets, 2 auxiliary, USB, rear seat
- Retained accessory power audio system, mirrors, power windows, sunroof and climate control remain operational after ignition is switched off for 10 minutes or until a door is opened
- Seat adjuster, driver 8-way power
- Seats, rear, 60/40 split-folding seatback with fold down armrest - Sensor, cabin humidity
- Sill plate cover, Bright finish, front door opening- Sill plate, rear cargo, metallic finish
- Steering wheel controls- Steering wheel mounted paddle shift controls
- Steering wheel, leather-wrapped- Sunglass holder, overhead console
- Theft-deterrent system, content theft alarm - Universal Home Remote
- Visors, driver and front passenger illuminated vanity mirrors, covered
- Windows, power, front with Express-Up/Down and rear with Express Down

## Exterior

- Mirrors, outside heated, power-adjustable, power-folding and driver-side auto-dimming, body-color (Upgradeable to (DNP) outside heated, power-adjustable, power-folding and driver-side auto-dimming mirrors with integrated turn signal indicators when (Y74) Enhanced Visibility Package is ordered.)
- Tires, P235/60R18 all-season (Upgradeable to (XD9) 20" all-season tires when (RQA) 20" wheels are ordered.)
- Wheels, 18" (45.7 cm) 10-spoke alloy with Pearl Nickel finish (Upgradeable to (RQA) 20" wheels.)
- Active Aero Shutters, front (Deleted when (V92) Trailering Package is ordered.)
- Door handles, illuminated, body-color with Satin chrome accents
- Glass, acoustic, laminated front-side and windshield
- Glass, tinted, rear side and back window- Grille, bright accents with galvano surround
- Hands-Free Liftgate, open and close with motion sense and programmable memory height
- Headlamp control, automatic on/off with tunnel detection- Headlamps, LED
- Lamp, LED center high-mounted stop/brake
- Longitudinal roof rails, brushed aluminum finish
- Lower bodyside appearance with accent color, trim specific
- Lower fascia inserts, front and rear, medium Silver
- Moldings, bodyside brushed aluminum finish, window surround- Taillamps, LED
- Tire Inflator Kit (Deleted when (4G7) 17" spare wheel is ordered.)
- Wiper, rear intermittent- Wipers, front intermittent, Rainsense

## Safety

- Cruise control, electronic with set and resume speed (Upgradeable to (KSG) Adaptive Cruise Control - Advanced when (Y66) Driver Assist Package is ordered.)
- Floor mats, carpeted front and rear- Leather seating surfaces
- Rotary infotainment controller, console mounted, with jog capability
- Seat adjuster, passenger 6-way power (Upgradeable to (A7K) 8-way power passenger seat adjuster when (WPC) Comfort and Convenience Package is ordered.)
- Seat, driver power lumbar control, 2-way (Upgradeable to (AVK) 4-way driver power lumbar seat control when (WPC) Comfort and Convenience Package is ordered.)
- Seat, front passenger power lumbar, 2-way (Upgradeable to (AVU) 4-way front passenger power lumbar seat control when (WPC) Comfort and Convenience Package is ordered.)
- Seats, front bucket
- Steering column, manual rake and telescoping (Upgradeable to (N38) power rake and telescoping steering column when (CWM) Technology Package is ordered.)
- USB ports, full function one type A and one type C, front console
- Active Noise Cancellation- Adaptive Remote Start
- Air conditioning, dual-zone automatic climate control- Air filter, cabin- Air vents, rear
- Assist handles, driver, front passenger and rear outboard
- Cadillac Connected Access capable (Subject to terms. See onstar.com or dealer for details.)
- Cargo net anchors- Cargo shade, rear
- Cupholders 2 front in center console and 2 rear in second row center armrest. Additionally, 1 bottle holder in door storage pocket for driver and front passenger
- Defogger, rear-window electric- Drive mode selector
- Driver memory, recalls 2 "presets" for 8-way power driver seat and outside mirror
- Gauge cluster, 4.2" diagonal color reconfigurable Driver Information Center display (Upgradeable to (UHS) 8" diagonal color reconfigurable gauge cluster when (CWM) Technology Package is ordered.)

- Gearshift handle, with Piano Black accents- Glovebox, lockable
- Head restraints, 2-way adjustable (up/down), front
- Head restraints, rear, adjustable, folding- Keyless Access, passive entry
- Lighting, illuminated entry
- Lighting, interior ambient accent lighting in door panels and instrument panel
- Map pockets, driver and front passenger seatbacks
- Mini-umbrella holders driver and front passenger doors
- Mirror, inside rearview auto-dimming (Upgradeable to (DRZ) Rear Camera Mirror when (Y74) Enhanced Visibility Package is ordered.)
- Oil life monitor- Power outlet, rear auxiliary, 12-volt, cargo area
- Power outlets, 2 auxiliary, 12-volt, console- Power outlets, 2 auxiliary, USB, rear seat
- Retained accessory power audio system, mirrors, power windows, sunroof and climate control remain operational after ignition is switched off for 10 minutes or until a door is opened
- Seat adjuster, driver 8-way power
- Seats, rear, 60/40 split-folding seatback with fold down armrest - Sensor, cabin humidity
- Sill plate cover, Bright finish, front door opening- Sill plate, rear cargo, metallic finish
- Steering wheel controls- Steering wheel mounted paddle shift controls
- Steering wheel, leather-wrapped- Sunglass holder, overhead console
- Theft-deterrent system, content theft alarm - Universal Home Remote
- Visors, driver and front passenger illuminated vanity mirrors, covered
- Windows, power, front with Express-Up/Down and rear with Express Down

## Mechanical

- Transmission, 9-speed automatic electronically-controlled
- Automatic Stop/Start, with disable- Axle, 3.47 ratio- Battery rundown protection
- Brake rotors, Duralife, FNC (Ferritic Nitrocarburizing), front and rear
- Brake, electronic parking- Brakes, 4-wheel antilock, 4-wheel disc- Capless fuel fill
- Drivetrain, front-wheel drive
- Engine, 2.0L Turbo, 4-cylinder, SIDI (237 hp [177 kW] @ 5000 rpm, 258 lb-ft of torque [350 N-m] @ 1500-4000 rpm)
- Exhaust, dual-outlet with bright tips integrated in fascia - Hill hold and start assist
- Intelligent brake fade resistance includes auto drying
- Steering, power, variable assist, electric- Suspension, front, MacPherson strut
- Suspension, rear multi-link with coil springs

## Option Packages

### Factory Installed Packages

ENGINE, 2.0L TURBO, 4-CYLINDER, SIDI  
(237 hp [177 kW] @ 5000 rpm, 258 lb-ft of  
torque [350 N-m] @ 1500-4000 rpm)

Come and visit us at [www.oceanautosales.com](http://www.oceanautosales.com) for our expanded inventory. This offer excludes registration, tax, and all applicable fees. Online listings are W.A.C of at least 720 Beacon credit score and is subject to change without notice and cannot be combined with any other offer. We are not responsible for any typographical errors. Internet or any other promotional pricing cannot be used in conjunction with any other promotional offers. You must present ad / printout before or at the time of negotiation to receive this promotional offer. All prices are based on \$3000 Down or Trade of equal value.

Ocean Auto Sales

Ocean Auto Sales

View this car on our website at [oceanautosales.com/7174171](http://oceanautosales.com/7174171)

Website: [oceanautosales.com](http://oceanautosales.com)

Phone: 3057838676

Map: 6700 S.W. 24th Street (Coral Way), Miami, FL 33155

